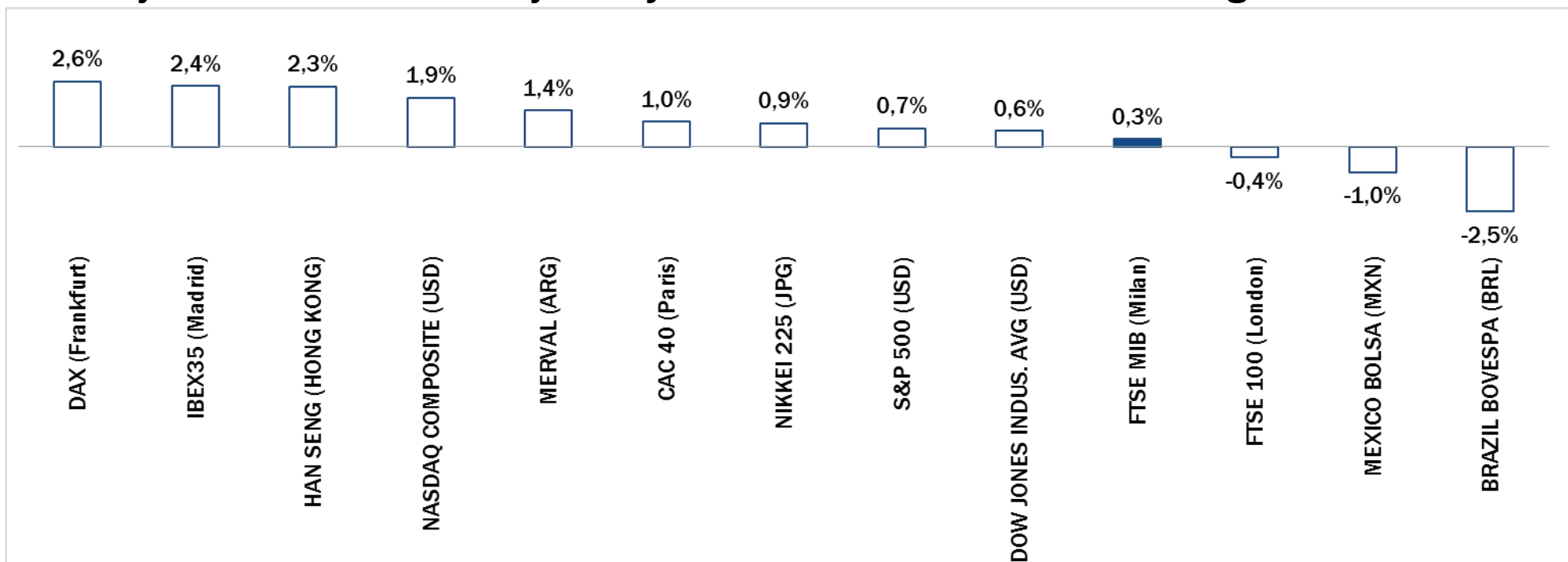


Weekly Stock Market Report for Telecom Italia Retail Shareholders

November 24th – November 28th, 2014

Weekly Performance Summary of Major Worldwide Market Stock Exchanges



Index Point as of 28-Nov-14	Performance (Δ%)*					Last 52 weeks		Daily average volume **		Market Cap. (mln. local cur.)
	1 week	1 month	6 months	1 year	from Jan. '14	Low Price	High Price	1 week	1 month	

Europe

FTSE MIB (Milan)	20.015	0,3%	1,2%	-7,5%	5,2%	5,5%	17.556	22.590	650.628.224	854.512.117	410.574
FTSE 100 (London)	6.723	-0,4%	2,7%	-1,8%	1,1%	-0,4%	6.073	6.905	733.308.077	769.823.312	1.839.500
DAX (Frankfurt)	9.981	2,6%	7,0%	0,4%	6,1%	4,5%	8.355	10.051	97.623.504	96.297.855	984.336
CAC 40 (Paris)	4.390	1,0%	3,7%	-2,9%	2,2%	2,2%	3.789	4.599	106.934.445	132.139.777	1.184.989
IBEX35 (Madrid)	10.771	2,4%	2,8%	-0,3%	9,5%	8,6%	9.232	11.249	441.805.267	528.069.708	571.588

America

DOW JONES INDUS. AVG (USD)	17.828	0,6%	2,5%	6,6%	10,8%	7,6%	15.341	17.895	92.522.506	85.762.242	5.052.477
S&P 500 (USD)	2.068	0,7%	2,5%	7,5%	14,5%	11,9%	1.738	2.076	543.591.789	521.521.227	18.871.948
NASDAQ COMPOSITE (USD)	4.792	1,9%	3,5%	12,9%	18,0%	14,7%	3.946	4.811	426.687.514	479.480.901	7.265.374
MEXICO BOLSA (MXN)	44.190	-1,0%	-1,9%	6,8%	4,0%	3,4%	37.752	46.554	179.887.125	189.196.358	2.204.797
MERVAL (ARG)	9.809	1,4%	-11,0%	27,2%	71,5%	81,9%	5.105	12.599	4.967.458	8.222.733	9.807
BRAZIL BOVESPA (BRL)	54.664	-2,5%	0,1%	6,7%	4,2%	6,1%	44.905	62.305	353.612.461	432.060.274	1.796.336

Asia

NIKKEI 225 (JPG)	17.460	0,9%	6,4%	19,3%	11,5%	7,2%	13.885	17.521	1.483.198.899	1.687.075.354	325.413.632
HAN SENG (HONG KONG)	23.987	2,3%	0,0%	3,9%	0,4%	2,9%	21.138	25.363	2.427.881.933	1.736.155.356	14.717.207

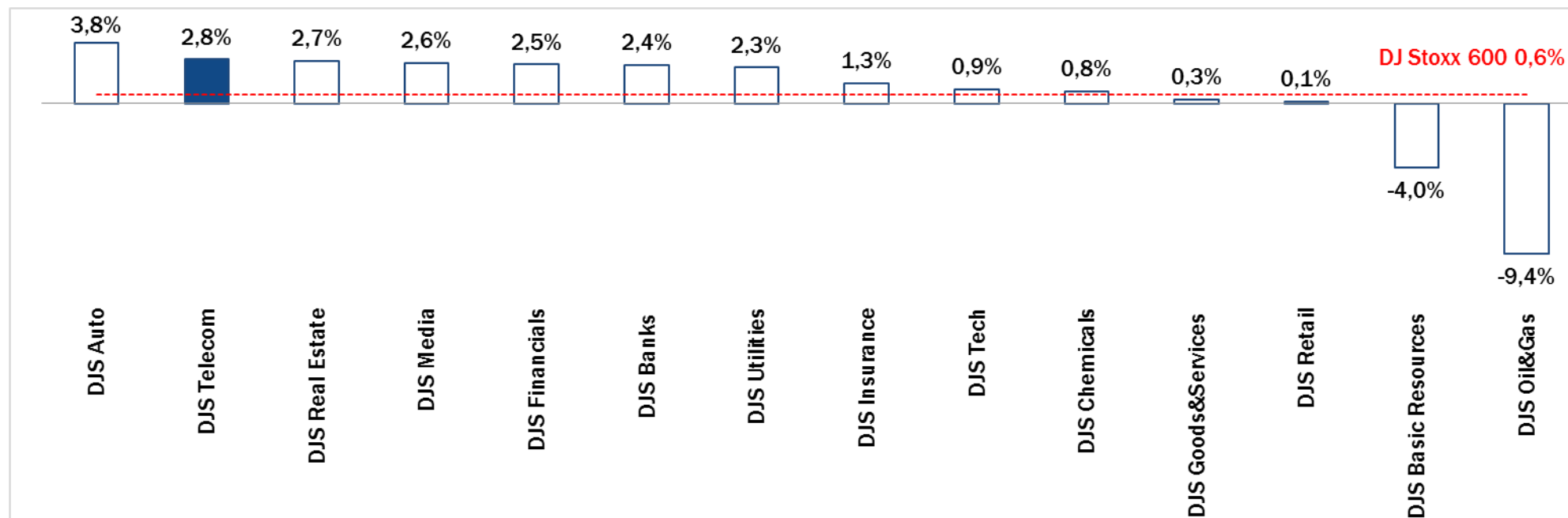
* performance calculated on closing price

** n. of traded shares

Source: Bloomberg LP

NB: Weekly performances are referred to last 5 open market sessions.

Weekly Performance Summary of Major European Sectors



Index	Index Point as of 28-Nov-14	Performance (Δ%)*					Last 52 weeks		Daily average volume **		Market Cap. (mln. local cur.)
		1 week	1 month	6 months	1 year	from Jan. '14	Low Price	High Price	1 week	1 month	
DJ Stoxx 600	347,25	0,6%	3,1%	0,9%	6,8%	5,8%	302,48	350,85	2.889.713.306	3.309.833.481	8.814.247,00
Sectors											
DJS Telecom	329,16	2,8%	8,4%	8,3%	12,6%	10,6%	265,32	329,51	333.044.122	349.584.819	452.440,03
DJS Auto	501,66	3,8%	8,5%	-4,4%	5,0%	4,1%	407,83	536,66	28.968.774	41.259.731	283.633,75
DJS Banks	196,85	2,4%	1,2%	-2,8%	1,5%	1,4%	173,86	209,5	1.239.430.259	1.585.238.837	1.171.272,50
DJS Basic Resources	383	-4,0%	-1,3%	-4,9%	-3,9%	-4,4%	369,17	455,43	88.715.530	94.544.406	274.268,50
DJS Chemicals	796,6	0,8%	5,5%	1,5%	6,8%	5,2%	677,03	804,1	18.786.406	18.733.183	384.014,44
DJS Oil&Gas	294,65	-9,4%	-7,7%	-18,5%	-11,5%	-12,0%	287,36	381,9	206.390.438	187.386.387	563.388,38
DJS Financials	373,08	2,5%	5,4%	3,9%	13,3%	8,6%	307,16	375,18	30.490.750	31.776.090	155.221,52
DJS Goods&Services	405,15	0,3%	2,6%	-3,0%	-0,1%	-2,1%	351,98	425,9	154.618.984	167.630.297	903.276,13
DJS Insurance	250,41	1,3%	4,6%	8,4%	12,7%	9,7%	210,78	250,77	110.731.435	109.665.553	501.930,16
DJS Media	268,73	2,6%	6,3%	6,4%	8,2%	5,8%	226,72	268,91	52.221.178	56.159.801	242.893,48
DJS Tech	303,03	0,9%	5,9%	5,9%	5,4%	4,3%	260,2	305,74	71.493.509	91.761.862	275.113,88
DJS Utilities	323,39	2,3%	0,9%	2,0%	15,4%	16,2%	265,76	328,18	202.262.608	212.952.830	462.836,50
DJS Retail	304,17	0,1%	6,4%	-4,2%	-7,4%	-6,4%	259,46	331,27	107.123.483	125.545.526	313.683,72
DJS Real Estate	163,01	2,7%	3,6%	7,3%	18,7%	19,7%	129,71	163,5	18.679.756	19.675.235	127.562,34

* performance calculated on closing price

Source: Bloomberg LP

** n. of traded shares

NB: Weekly performances are referred to last 5 open market sessions.

Europe: Stock Performance of Main TLC Operators

Last Week Performance

Talk Talk	10,5%
British Telecom	7,9%
Inmarsat	7,1%
Deutsche Telekom	4,1%
Belgacom	3,5%
Orange	3,4%
Telefonica	3,3%
C&W Comm.	3,1%
DJStoxx Telecom	2,8%
Vodafone Group	2,7%
Teliasonera	2,5%
Freenet	2,3%
Vivendi	1,3%
Telekom Austria	1,3%
Swisscom	1,2%
Portugal Telecom	1,1%
Iliad	0,5%
Elisa	0,3%
Telecom Italia Sav.	0,1%
Jazztel	0,0%
OTE	0,0%
TDC	-0,3%
Tele2	-0,4%
TEF Deutschland	-0,5%
KPN	-0,7%
Ziggo	-0,7%
Telecom Italia Ord.	-1,5%
Telenor	-4,2%

2014 Year-To-Date Performance

Jazztel	64,5%
Orange	57,4%
Belgacom	47,6%
Iliad	32,6%
Tele2	32,5%
Telecom Italia Sav.	29,5%
Telecom Italia Ord.	25,7%
Swisscom	24,5%
Elisa	21,1%
KPN	14,0%
Vivendi	12,8%
DJStoxx Telecom	10,6%
Deutsche Telekom	10,2%
Freenet	9,0%
Telefonica	8,8%
Ziggo	8,4%
Telekom Austria	8,3%
British Telecom	8,1%
Inmarsat	5,1%
Telenor	2,4%
Talk Talk	2,1%
OTE	1,9%
Teliasonera	-0,7%
Vodafone Group	-2,9%
TEF Deutschland	-3,8%
TDC	-7,8%
C&W Comm.	-12,0%
Portugal Telecom	-52,2%

Last 1 Year Performance

Jazztel	65,4%
Orange	47,3%
Belgacom	45,2%
Telecom Italia Sav.	30,3%
Swisscom	26,6%
Telecom Italia Ord.	26,2%
Elisa	25,9%
Tele2	20,8%
Deutsche Telekom	17,2%
Vivendi	15,6%
Talk Talk	14,8%
Inmarsat	14,5%
Ziggo	14,1%
Freenet	13,6%
Iliad	13,4%
DJStoxx Telecom	12,6%
KPN	11,5%
British Telecom	10,1%
OTE	7,4%
Telefonica	6,4%
C&W Comm.	3,8%
Vodafone Group	1,4%
Telenor	0,5%
Teliasonera	-0,7%
TDC	-1,5%
TEF Deutschland	-3,8%
Telekom Austria	-4,8%
Portugal Telecom	-54,4%

Performance Summary of Main European TLC Operators

Cl. Price (local currency) 28-Nov-14	Performance ($\Delta\%$)*					Last 52 weeks		Daily average volume **		Market Cap. (all in €mln)
	1 week	1 month	6 months	1 year	from Jan. '14	Low Price	High Price	1 week	1 month	

EUROPE

Index

DJStoxx Telecom	329,16	2,8%	8,4%	8,3%	12,6%	10,6%	265,32	329,51	333.044.122	349.584.819
-----------------	--------	------	------	------	-------	-------	--------	--------	-------------	-------------

TLC Operators

Telecom Italia Ord.	0,906	-1,5%	5,3%	-0,9%	26,2%	25,7%	0,652	1,012	107.425.700	112.735.500	12.205
Telecom Italia Sav.	0,713	0,1%	3,3%	0,4%	30,3%	29,5%	0,499	0,792	18.821.750	17.475.940	4.294
Altice	54,10	10,4%	13,8%	4,5%	n.a.	n.a.	25,505	57,010	261.742	212.891	13.402
Belgacom	31,75	3,5%	4,5%	30,6%	45,2%	47,6%	19,975	31,985	706.105	936.333	10.731
British Telecom	410,20	7,9%	9,2%	3,3%	10,1%	8,1%	350,300	421,200	30.713.770	19.565.190	41.968
C&W Comm.	49,50	3,1%	3,0%	-6,6%	3,8%	-12,0%	42,910	58,500	7.872.253	7.110.390	1.729
Deutsche Telekom	13,70	4,1%	17,8%	12,4%	17,2%	10,2%	10,065	13,700	16.861.660	14.069.330	62.137
Elisa	23,32	0,3%	8,9%	5,7%	25,9%	21,1%	17,580	23,490	476.380	433.486	3.902
Freenet	23,75	2,3%	15,6%	4,3%	13,6%	9,0%	17,695	25,960	384.931	477.213	3.041
Orange	14,17	3,4%	16,0%	14,5%	47,3%	57,4%	8,388	14,165	7.622.272	9.546.464	37.521
OTE	9,85	0,0%	5,3%	-7,1%	7,4%	1,9%	8,460	13,200	710.709	864.334	4.828
Iliad	197,50	0,5%	11,0%	-14,0%	13,4%	32,6%	144,850	247,400	120.204	104.061	11.540
Inmarsat	794,50	7,1%	17,8%	10,1%	14,5%	5,1%	653,000	795,000	2.706.273	1.111.109	4.475
Jazztel	12,80	0,0%	0,2%	17,3%	65,4%	64,5%	7,210	12,860	3.934.910	4.426.179	3.284
KPN	2,67	-0,7%	4,8%	-1,1%	11,5%	14,0%	2,133	2,805	17.223.240	17.138.200	11.402
TEF Deutschland	4,22	-0,5%	11,5%	-5,8%	-3,8%	-3,8%	3,466	5,052	2.281.067	2.379.444	12.544
Portugal Telecom	1,51	1,1%	34,3%	-44,4%	-54,4%	-52,2%	0,865	3,639	7.660.357	15.358.240	1.353
Swisscom	586,50	1,2%	6,2%	9,9%	26,6%	24,5%	447,600	587,500	81.882	113.787	25.287
Talk Talk	312,30	10,5%	7,5%	-3,0%	14,8%	2,1%	261,000	334,300	2.775.784	2.373.891	3.747
TDC	48,50	-0,3%	7,2%	-8,7%	-1,5%	-7,8%	40,400	57,700	2.058.104	2.204.574	5.293
Telefonica	12,88	3,3%	10,3%	4,8%	6,4%	8,8%	10,760	12,935	35.106.780	48.665.280	58.617
Telenor	148,10	-4,2%	-0,5%	4,3%	0,5%	2,4%	123,900	158,200	2.404.288	2.005.230	25.490
Tele2	96,55	-0,4%	4,9%	22,3%	20,8%	32,5%	68,750	98,700	1.669.347	2.425.373	4.640
Telekom Austria	5,49	1,3%	-1,2%	-16,6%	-4,8%	8,3%	4,888	6,992	697.523	869.775	3.645
Teliasonera	53,20	2,5%	5,2%	7,9%	-0,7%	-0,7%	43,980	53,850	7.417.686	9.430.545	24.844
Vivendi	20,48	1,3%	7,6%	12,0%	15,6%	12,8%	16,446	20,500	4.142.329	4.741.360	27.618
Vodafone Group	233,95	2,7%	14,0%	11,7%	1,4%	-2,9%	179,100	252,300	81.651.740	90.039.900	77.917
Ziggo	36,00	-0,7%	-6,3%	4,3%	14,1%	8,4%	30,500	40,885	112.772	709.797	7.203

* performance calculated on closing price ** n. of traded shares

Source: Bloomberg LP

Brazil: Stock Performance of Main TLC Operators

Last Week Performance

Argentinean Equity - Merval Index	1,4%
Telecom Argentina - ADR	0,8%
Telefonica Brasil PN	0,6%
NET Servicios PN	0,0%
America Movil	-0,3%
Telefonica Brasil ON	-0,7%
TIM Participações	-0,9%
Telecom Argentina - "B shares"	-1,0%
Brazilian Equity - Bovespa Index	-2,5%
Embratel PN	-5,1%
Oi ON	-5,6%
Embratel ON	-9,2%
Oi PN	-9,2%

2014 Year-To-Date Performance

NET Servicios PN	92,6%
Argentinean Equity - Merval Index	81,9%
Embratel ON	79,3%
Embratel PN	75,7%
Telecom Argentina - "B shares"	64,5%
Telecom Argentina - ADR	27,2%
Telefonica Brasil PN	17,1%
Telefonica Brasil ON	7,9%
America Movil	7,8%
Brazilian Equity - Bovespa Index	6,1%
TIM Participações	1,1%
Oi ON	-58,2%
Oi PN	-61,6%

Last 1 Year Performance

Embratel PN	107,9%
Embratel ON	106,9%
Argentinean Equity - Merval Index	71,5%
NET Servicios PN	54,8%
Telecom Argentina - "B shares"	47,4%
Telefonica Brasil PN	16,9%
Telecom Argentina - ADR	9,7%
TIM Participações	8,0%
America Movil	7,8%
Telefonica Brasil ON	7,7%
Brazilian Equity - Bovespa Index	4,2%
Oi ON	-61,0%
Oi PN	-61,3%

Performance Summary of Main LatAm TLC Operators

Cl. Price 28-Nov-14	Performance ($\Delta\%$)*						Last 52 weeks		Daily average volume **		Market Cap. (mln)***
	1 week	1 month	6 months	1 year	from Jan. '14	Low Price	High Price	1 week	1 month		

BRAZIL

Index

Brazilian Equity - Bovespa Index	R\$ 54.664,36	-2,5%	0,1%	6,7%	4,2%	6,1%	44.904,83	62.304,88	353.612.461	432.060.274	R\$ 1.796.336
----------------------------------	---------------	-------	------	------	------	------	-----------	-----------	-------------	-------------	---------------

Peers

TIM Participações	R\$ 12,46	-0,9%	7,2%	3,7%	8,0%	1,1%	R\$ 10,19	R\$ 14,57	2.720.060	4.090.583	R\$ 30.166
--------------------------	------------------	--------------	-------------	-------------	-------------	-------------	------------------	------------------	------------------	------------------	-------------------

Oi ON	R\$ 1,51	-5,6%	30,2%	-25,2%	-61,0%	-58,2%	R\$ 1,08	R\$ 4,89	2.619.820	4.465.714	R\$ 4.321
Oi PN	R\$ 1,38	-9,2%	24,3%	-27,7%	-61,3%	-61,6%	R\$ 1,02	R\$ 4,62	26.730.000	40.193.300	R\$ 7.898
Telefonica Brasil ON	R\$ 43,17	-0,7%	11,1%	10,0%	7,7%	7,9%	R\$ 36,49	R\$ 44,66	14.680	13.797	R\$ 16.473
Telefonica Brasil PN	R\$ 52,51	0,6%	13,1%	15,4%	16,9%	17,1%	R\$ 41,66	R\$ 54,00	882.880	927.893	R\$ 39.068
Embratel ON	R\$ 15,04	-9,2%	-6,0%	-31,9%	106,9%	79,3%	R\$ 6,90	R\$ 23,88	200	490	R\$ 9.599
Embratel PN	R\$ 15,20	-5,1%	-13,1%	-33,9%	107,9%	75,7%	R\$ 7,00	R\$ 23,50	180	617	R\$ 9.016
NET Servicos PN	R\$ 43,00	0,0%	2,4%	-28,3%	54,8%	92,6%	R\$ 18,98	R\$ 63,85	0	437	R\$ 10.736

ARGENTINA

Index

Argentinean Equity - Merval Index	9.808,60	1,4%	-11,0%	27,2%	71,5%	81,9%	5.105,48	12.599,42	0	437	ARS 1.003.081
-----------------------------------	----------	------	--------	-------	-------	-------	----------	-----------	---	-----	---------------

Integrated

Telecom Argentina - "B shares"	ARS 51,00	-1,0%	-10,1%	6,3%	47,4%	64,5%	ARS 27,40	ARS 65,00	18.025	70.144	ARS 50.203
Telecom Argentina - ADR	\$21,93	0,8%	2,4%	1,4%	9,7%	27,2%	\$13,93	\$25,56	137.648	112.183	\$4.317

Nortel Inversora B shares - ADR	\$22,69	-0,9%	2,2%	8,0%	-0,5%	14,0%	\$15,84	\$26,37	484	5.908	\$3.086
---------------------------------	---------	-------	------	------	-------	-------	---------	---------	-----	-------	---------

MEXICO

Index

Mexican Equity - Mexbol Index	44.190,47	-1,0%	-1,9%	6,8%	4,0%	3,4%	37.751,64	46.554,28	179.887.125	189.196.358	MXN 4.902.778
-------------------------------	-----------	-------	-------	------	------	------	-----------	-----------	-------------	-------------	---------------

Mobile/Integrated

America Movil	MXN 16,40	-0,3%	1,6%	28,5%	7,8%	7,8%	MXN 12,39	MXN 17,64	64.405.080	65.941.150	MXN 1.116.573
---------------	-----------	-------	------	-------	------	------	-----------	-----------	------------	------------	---------------

TV

Grupo Televisa	MXN 101,29	0,3%	7,6%	15,1%	26,5%	28,7%	MXN 73,20	MXN 104,50	2.525.936	2.832.001	MXN 292.941
----------------	------------	------	------	-------	-------	-------	-----------	------------	-----------	-----------	-------------

* performance calculated on closing price

** n. of traded shares

*** For Telecom Argentina, reported market capitalization represents estimated market capitalization of all Classes of Shares (A,B,C - of which only Class B is listed).



European Telecoms Sector: Credit Outlook

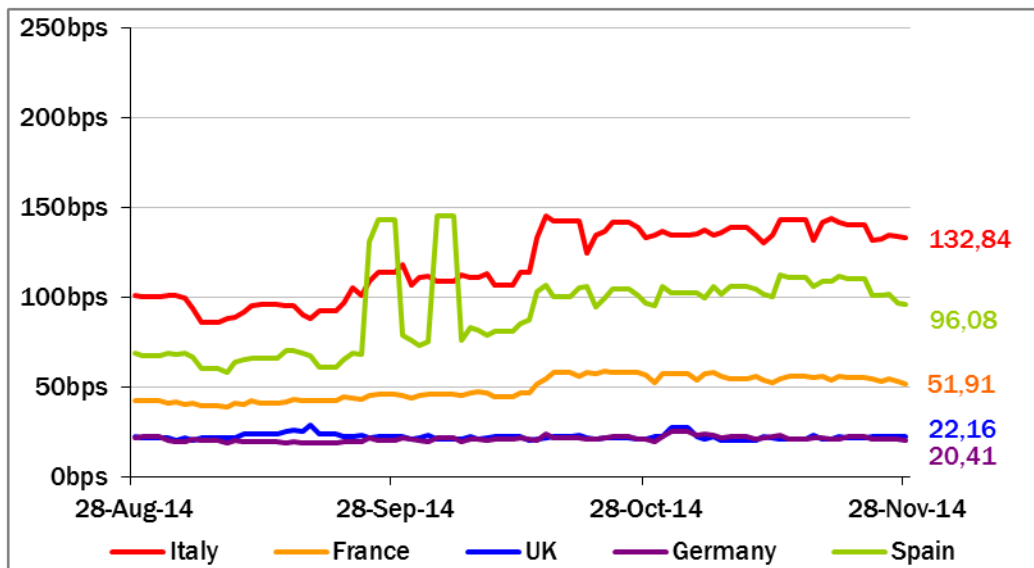
Long-term Credit Ratings

S&P Revised Outlook on TI from “Negative” to “Stable” on expected debt containment; 'BB+’ rating affirmed
“We think that recent softening of the decline in mobile revenues will continue in the coming quarters, thanks to both diminishing price aggressiveness in the market and to some beneficial impact of rapidly increasing data usage, which should in turn increasingly favor higher quality networks. More generally, Telecom Italia's strong push in fiber and 4G/LTE deployment should contribute to its maintaining leading competitive positions in the future, and help to mitigate very high pressures experienced in more traditional voice products.”

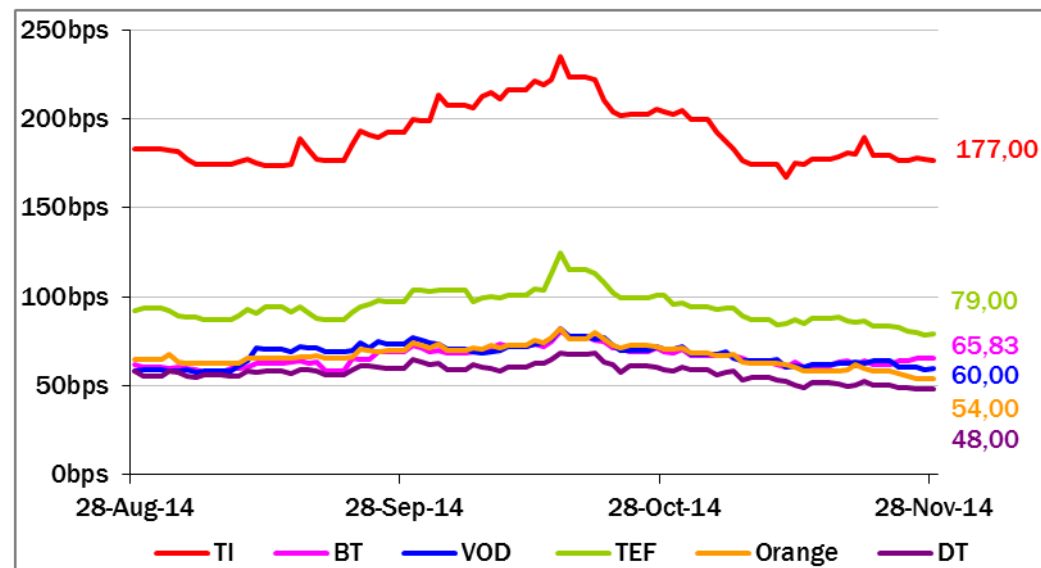
	Moody's		S&P		Fitch	
	rating	outlook	rating	outlook	rating	outlook
TELECOM ITALIA	Ba1	NEG	BB+	STABLE	BBB-	NEG
BELGACOM	A1	STABLE	A	STABLE	n.a.	n.a.
BT GROUP	Baa2	POS	BBB	STABLE	BBB	POS
DEUTSCHE TELEKOM	Baa1	STABLE	BBB+	STABLE	BBB+	STABLE
ORANGE	Baa1	STABLE	BBB+	NEG	BBB+	NEG
KPN	Baa3	STABLE	BBB-	STABLE	BBB-	STABLE
OI GROUP	Ba1	NEG	BB+	STABLE	BB+	STABLE
SWISSCOM	A2	STABLE	A	STABLE	n.a.	n.a.
TELEFONICA	Baa2	NEG	BBB	STABLE	BBB+	NEG
TELEKOM AUSTRIA	Baa2	STABLE	BBB	STABLE	n.a.	n.a.
TELIASONERA	A3	NEG	A-	STABLE	A-	STABLE
TELENOR	A3	STABLE	A	STABLE	n.a.	n.a.
VODAFONE GROUP	Baa1	STABLE	A-	NEG	BBB+	STABLE
WIND TELECOMUNICAZIONI	B2	STABLE	BB-	STABLE	B+	STABLE
VIMPELCOM	Ba3	STABLE	BB	POS	n.a.	n.a.

5 Years CDS levels

Countries



TLC Operators

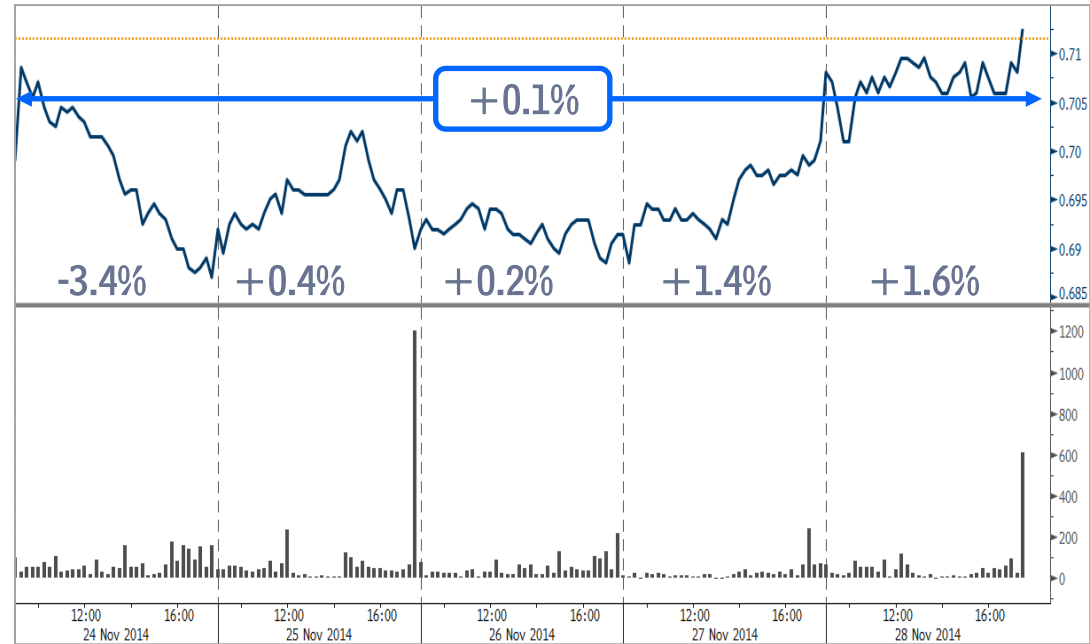
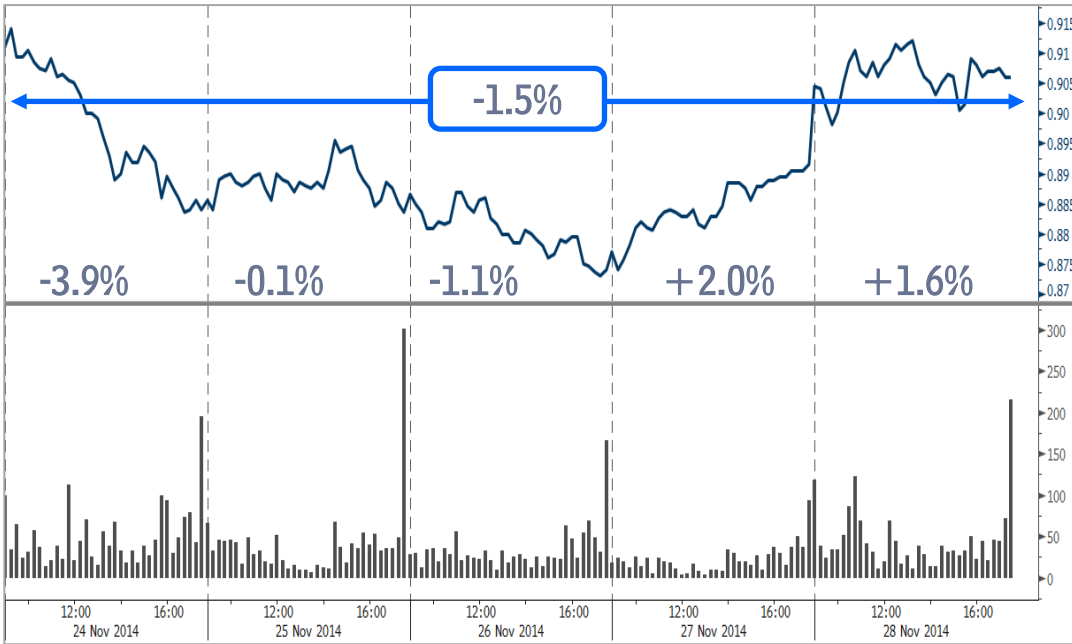




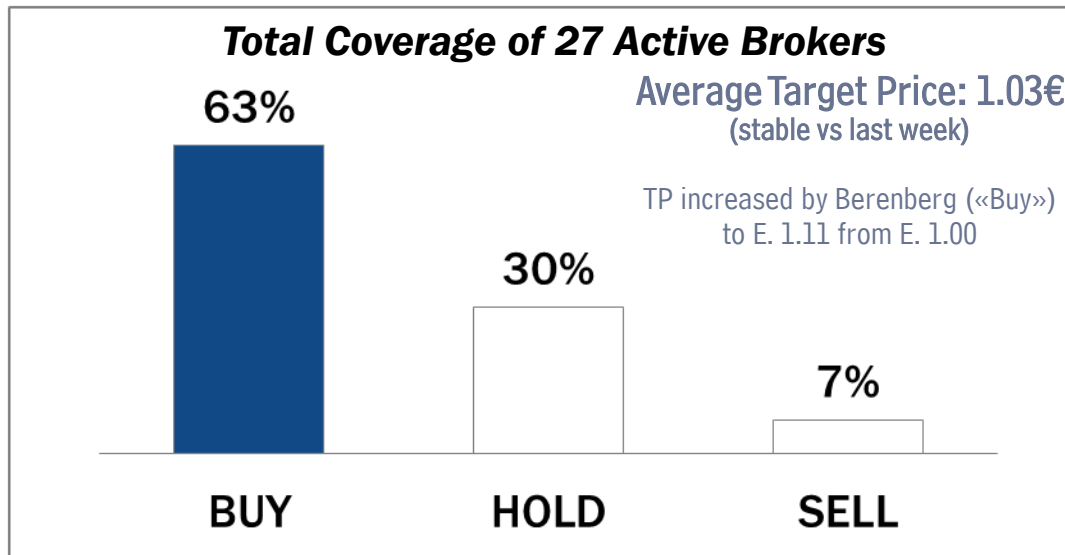
Telecom Italia Group – Weekly Performance: Price (€) and Volumes (mln)

TI Ordinary Shares

TI Saving Shares

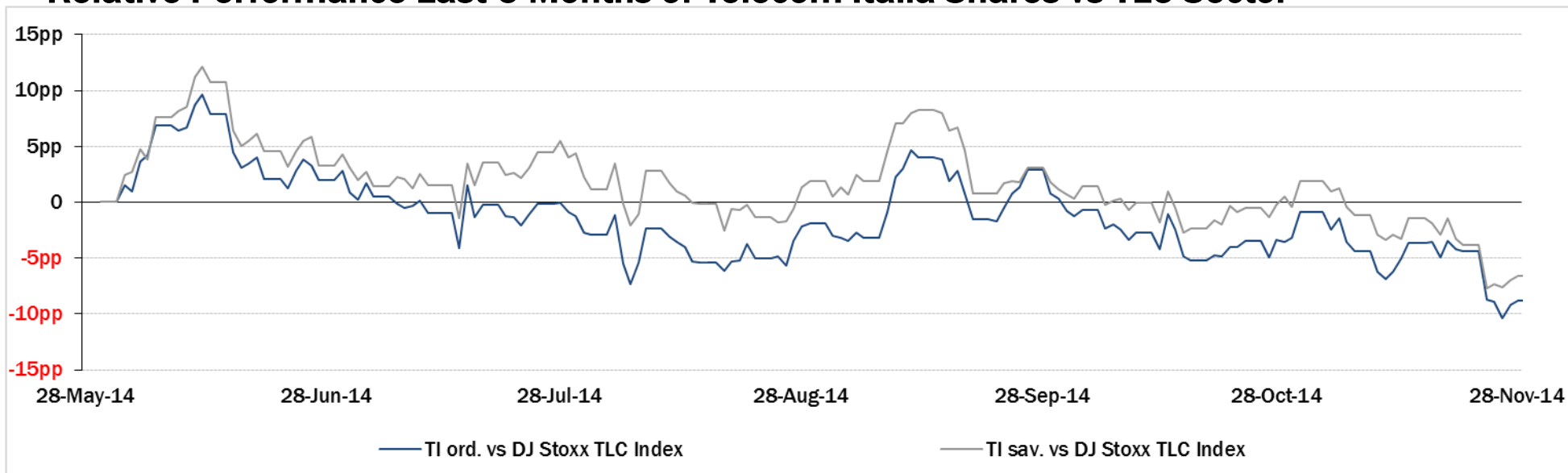


Analysts' Recommendations on TI Ords

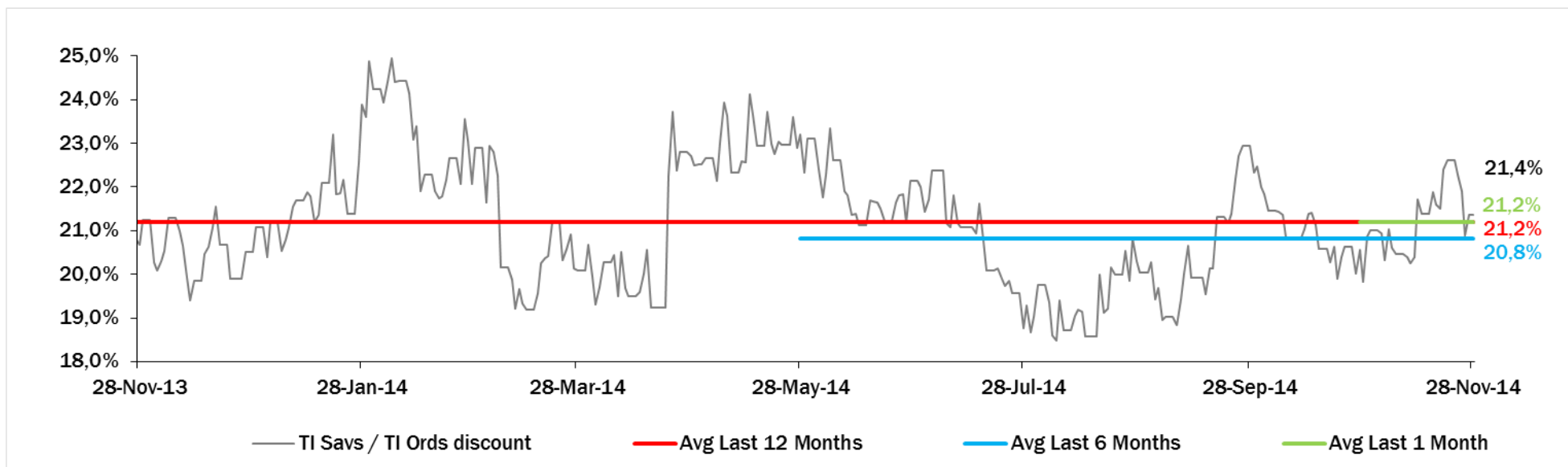




Relative Performance Last 6 Months of Telecom Italia Shares vs TLC Sector



Evolution of the spread between Telecom Italia shares (TI Savs / TI Ords) in the last 12 months



Performance Summary of FTSE MIB



Cl. Price €	Performance (Δ%)*						Last 52 weeks		Daily average volume		Market** Cap. mil. Euro
	28-Nov-14	1 week	1 month	6 months	1 year	from Jan. '14	Low Price	High Price	1 week	1 month	
Index											
FTSE MIB (Milan)	20.015	0,3%	1,2%	-7,5%	5,2%	5,5%	17.556	22.590	650.628.224	854.512.117	410.574
FTSE Italia All-Share (Milan)	21.115	0,4%	1,3%	-8,2%	4,3%	4,5%	18.587	23.913	1.056.434.880	1.113.718.238	492.107
Stocks FTSE MIB											
A2A SPA	0,84	0,3%	8,3%	-4,0%	-0,6%	-1,5%	0,68	1,03	16.620.120	17.834.240	2.625
AUTOGRILL SPA	6,07	6,4%	17,3%	-11,8%	-1,0%	-1,2%	4,87	7,77	2.290.179	2.778.587	1.543
ATLANTIA SPA	20,28	3,0%	10,1%	0,9%	23,4%	24,3%	15,57	21,50	2.171.950	2.488.206	16.747
AZIMUT HOLDING SPA	18,50	6,0%	2,1%	-7,1%	1,4%	-3,7%	16,02	25,92	1.027.796	1.193.748	2.650
BANCA MONTE DEI PASCHI SIENA	0,65	-3,7%	-11,2%	-55,2%	-44,4%	-40,8%	0,58	2,73	43.744.950	132.924.700	3.321
BANCO POPOLARE SC	11,09	6,4%	-3,9%	-18,6%	4,8%	5,1%	8,90	16,41	5.091.410	6.192.623	4.017
BANCA POPOL EMILIA ROMAGNA	5,70	6,2%	-4,9%	-22,8%	-10,9%	-9,6%	4,90	8,87	4.139.038	6.074.085	2.743
BUZZI UNICEM SPA	12,03	0,3%	15,2%	-5,1%	-4,7%	-8,2%	9,45	15,20	1.564.644	1.295.261	2.280
CNH INDUSTRIAL NV	6,30	-6,7%	-1,4%	-21,9%	-25,2%	-24,0%	5,83	8,87	5.795.279	6.200.646	8.525
DAVIDE CAMPARI-MILANO SPA	5,62	2,0%	0,6%	-10,4%	-5,2%	-7,6%	5,04	6,44	1.152.780	1.395.817	3.264
ENEL GREEN POWER SPA	1,94	2,1%	2,9%	-5,0%	6,9%	5,7%	1,65	2,19	7.598.298	9.794.450	9.675
ENEL SPA	3,88	2,8%	-1,0%	-6,6%	15,9%	22,2%	2,98	4,49	43.580.240	48.466.840	36.485
ENI SPA	16,07	-6,5%	-1,6%	-14,6%	-9,3%	-8,1%	15,31	20,46	22.268.420	18.194.540	58.401
EXOR SPA	35,80	2,1%	14,1%	14,4%	24,2%	23,8%	26,62	36,11	499.468	646.750	8.815
FIAT CHRYSLER AUTOMOBILES NV	10,03	1,1%	16,6%	n.a.	n.a.	n.a.	6,57	10,25	8.945.631	17.830.680	12.222
FINMECCANICA SPA	7,80	3,2%	13,5%	31,6%	45,5%	41,7%	4,85	7,89	3.424.877	5.248.196	4.510
ASSICURAZIONI GENERALI	17,39	1,1%	9,5%	5,1%	3,0%	1,7%	14,40	17,70	6.210.276	7.831.339	27.074
GTECH SPA	18,43	-1,3%	-0,4%	-8,6%	-18,6%	-16,8%	15,24	24,13	374.828	577.246	3.225
INTESA SANPAOLO	2,48	4,8%	10,2%	1,7%	39,2%	38,1%	1,63	2,66	164.611.200	183.099.100	40.469
LUXOTTICA GROUP SPA	43,00	2,9%	10,2%	3,3%	10,3%	10,4%	34,74	43,30	797.237	942.860	20.700
MEDIOBANCA SPA	7,20	2,0%	5,7%	0,3%	14,4%	13,2%	5,74	8,49	5.117.491	5.870.479	6.203
MEDIOLANUM SPA	5,58	1,2%	5,5%	-10,4%	-14,7%	-11,4%	4,75	7,19	2.715.343	2.638.980	4.115
MONCLER SPA	11,94	2,1%	7,7%	-10,0%	n.a.	-24,4%	10,01	16,60	633.541	915.017	2.985
MEDIASET SPA	3,25	3,9%	24,1%	-9,6%	-3,1%	-5,6%	2,42	4,45	8.555.933	11.023.080	3.841
PIRELLI & C.	11,41	0,5%	9,8%	-6,5%	0,6%	-9,3%	9,61	12,99	2.209.572	2.641.253	5.556
BANCA POPOLARE DI MILANO	0,59	3,2%	-0,8%	-9,5%	49,8%	46,5%	0,36	0,74	63.387.630	92.187.780	2.582
PRYSMIAN SPA	14,45	-3,2%	7,4%	-15,1%	-24,8%	-22,8%	12,34	19,79	1.294.101	1.451.203	3.128
SALVATORE FERRAGAMO SPA	21,90	3,0%	17,8%	-2,0%	-25,1%	-20,8%	17,61	29,85	667.546	678.143	3.688
SAIPEM SPA	11,51	-13,8%	-9,2%	-40,6%	-30,3%	-26,0%	11,41	21,00	6.039.884	5.408.518	5.081
SNAM SPA	4,26	0,7%	1,9%	-0,3%	7,7%	4,9%	3,71	4,58	8.080.201	14.978.200	14.419
STMICROELECTRONICS NV	6,05	2,5%	20,9%	-17,9%	4,0%	4,7%	4,89	7,42	3.654.805	6.214.001	5.506
TENARIS SA	13,30	-11,0%	-13,4%	-18,8%	-19,7%	-16,2%	13,21	18,29	3.054.867	3.084.981	15.701
TELECOM ITALIA SPA	0,9060	-1,5%	5,3%	-0,9%	26,2%	25,7%	0,65	1,01	107.425.700	112.735.500	16.498
TOD'S SPA	74,25	1,7%	4,6%	-24,6%	-40,4%	-38,8%	64,20	127,60	150.345	185.380	2.273
TERNA SPA	3,88	-0,1%	-0,2%	0,6%	9,3%	6,9%	3,42	4,14	9.533.050	11.269.960	7.807
UBI BANCA SCPA	6,18	4,6%	5,0%	-6,3%	24,0%	25,2%	4,58	7,55	8.051.272	10.961.210	5.573
UNICREDIT SPA	5,95	2,9%	7,3%	-5,9%	11,3%	10,5%	5,01	6,89	67.821.280	89.609.500	34.877
UNIPOLSAI SPA	2,30	0,6%	13,0%	-7,1%	24,9%	3,8%	1,77	2,72	6.112.616	7.660.855	6.387
WORLD DUTY FREE SPA	7,79	5,9%	17,1%	-22,1%	-9,5%	-14,8%	6,05	11,07	2.746.795	2.525.147	1.981
YOOX SPA	19,25	9,9%	31,9%	-17,0%	-38,2%	-41,0%	13,87	35,09	1.467.644	1.463.075	1.149

** for FTSE MIB stocks, market cap here reported on overall shares outstanding

Source: Bloomberg LP