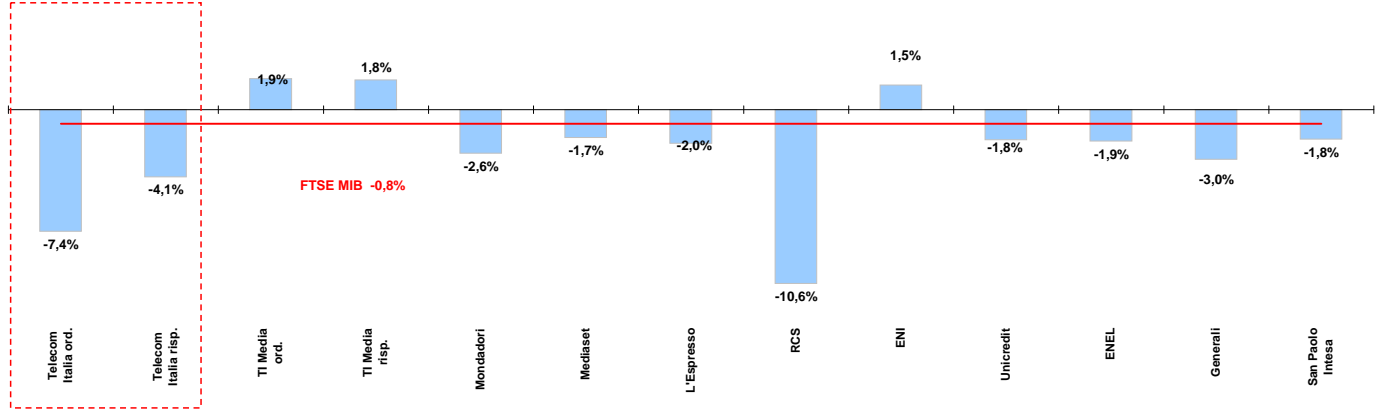




Weekly performance for Telecom Italia Shareholders

Telecom Italia and the Italian Stock Exchange

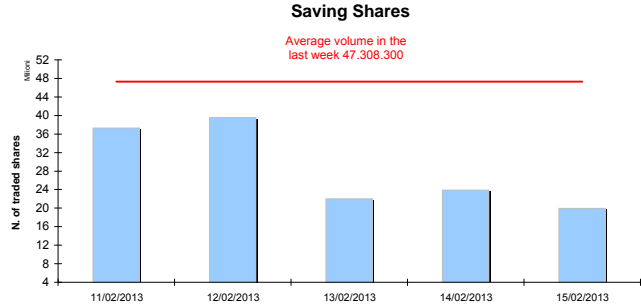
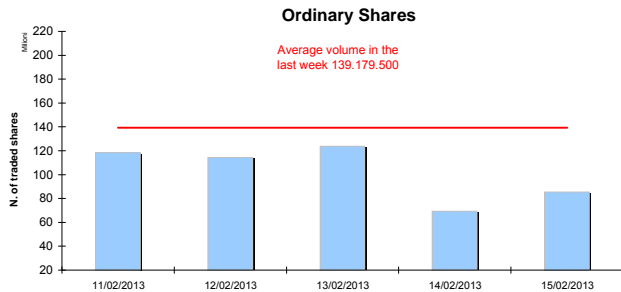
(Performance from 11/02/13 to 15/02/13)



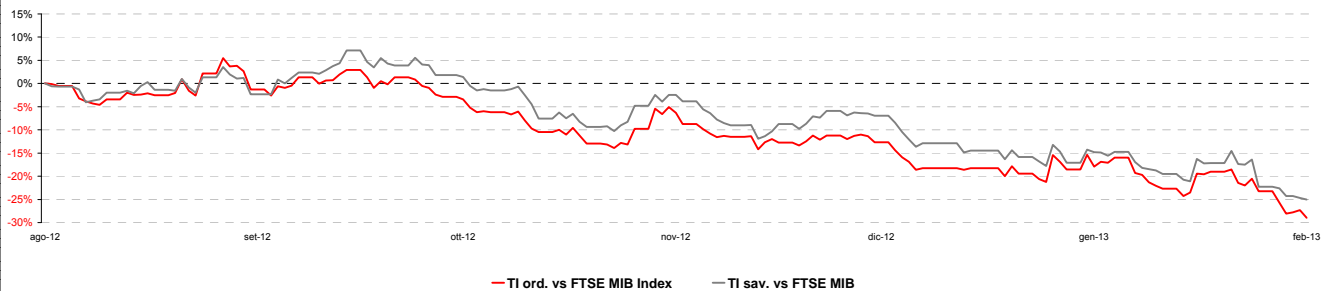
Stock performance summary of some stocks in the Italian Stock Exchange

Index	Cl. Price € 15-feb-13	Performance (Δ%)*					Last 52 weeks		Daily average volume **		Market Cap. mil. Euro
		1 week	1 month	6 months	1 year	from Jan. 12	Low Price	High Price	1 week	1 month	
TI & Peers											
Telecom Italia ord.	0,616	-7,4%	-17,4%	-16,4%	-23,5%	-9,9%	0,60	0,93	139.179.500	107.161.600	8.258
Telecom Italia risp.	0,542	-4,1%	-16,2%	-12,5%	-20,1%	-9,4%	0,51	0,76	47.308.300	26.132.880	3.263
Media											
TI Media ord.	0,16	1,9%	-1,0%	5,6%	-12,7%	2,9%	0,13	0,24	1.606.242	3.966.726	228
TI Media risp.	0,23	1,8%	-15,3%	15,3%	2,3%	-7,0%	0,18	0,30	2.013	5.722	1
Mondadori	1,07	-2,6%	-7,0%	8,6%	-26,1%	-4,4%	0,83	1,54	172.563	331.969	264
Mediaset	1,85	-1,7%	1,1%	30,7%	-21,3%	19,0%	1,14	2,48	10.807.290	24.163.670	2.188
L'Espresso	0,89	-2,0%	-4,8%	30,6%	-18,5%	0,7%	0,55	1,13	110.625	307.834	363
RCS	1,05	-10,6%	-17,4%	101,3%	51,9%	-16,3%	0,43	2,99	484.437	371.414	787
Main Stocks FTSE MIB											
ENI	17,69	1,5%	-8,4%	-1,2%	2,2%	-3,5%	14,94	19,59	13.648.620	12.397.260	64.289
Unicredit	4,30	-1,8%	-0,2%	44,6%	3,5%	16,1%	0,02	0,05	72.696.680	115.641.900	24.929
ENEL	2,89	-1,9%	-11,0%	16,8%	-11,1%	-7,8%	2,02	3,33	31.672.870	39.131.980	27.195
Generali	12,92	-3,0%	-7,6%	20,4%	7,0%	-6,0%	8,16	14,65	4.880.946	7.224.616	20.115
San Paolo Intesa	1,37	-1,8%	-8,2%	23,7%	-7,9%	5,7%	0,85	1,59	123.333.500	191.458.500	22.385

Telecom Italia shares' volume in the last 5 working days



Telecom Italia shares' relative performance vs. FTSE MIB in the last 6 months



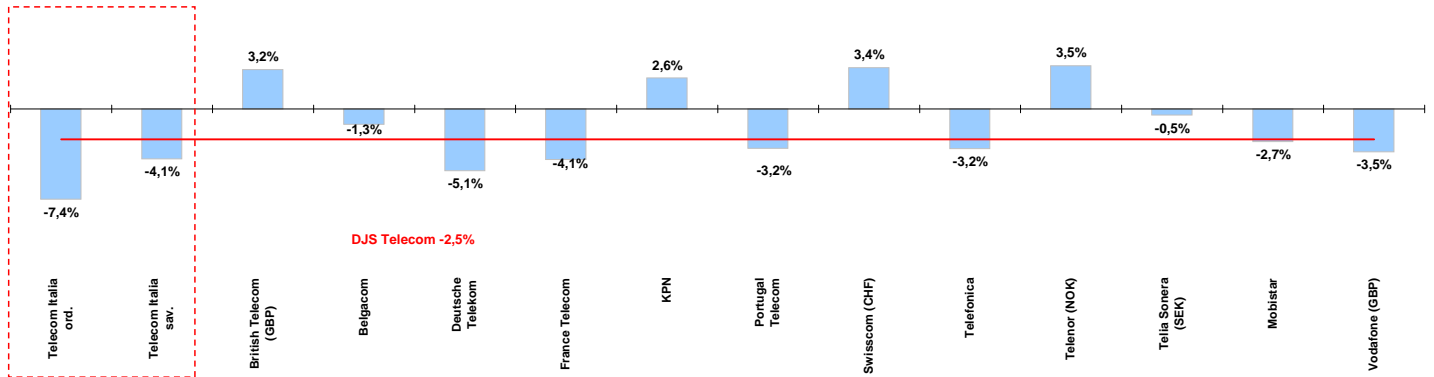
* performance calculated on closing price
** n. of traded shares



Weekly performance for Telecom Italia Shareholders

Telecom Italia and the Italian Sector

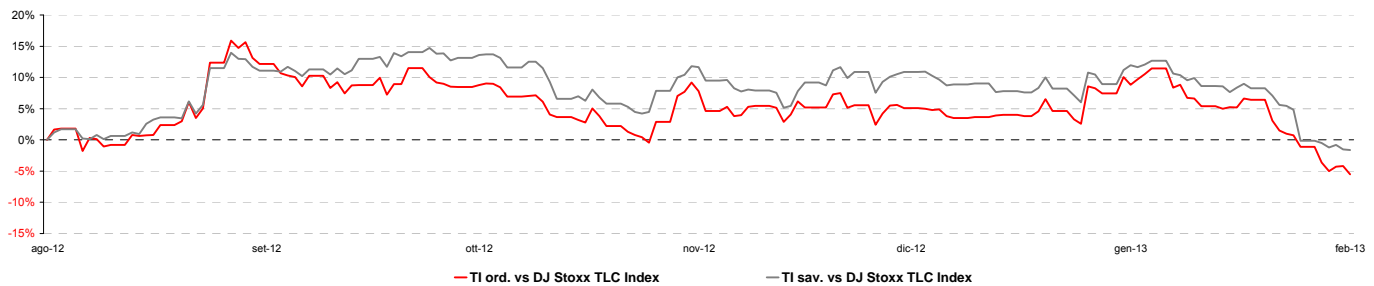
(Performance from 11/02/13 to 15/02/13)



Stock performance summary of TLC European sector

Index	Cl. Price € 15-feb-13	Performance (Δ%)*					Last 52 weeks		Daily average volume **		Market Cap. (mln. local cur.)
		1 week	1 month	6 months	1 year	from Jan. 12	Low Price	High Price	1 week	1 month	
DJS Telecom	225,76	-2,5%	-3,6%	-10,9%	-9,2%	0,2%	222,51	256,98	349.882.900	318.009.600	n/a
Integrated Operators (fixed + mobile)											
Telecom Italia ord.	0,616	-7,4%	-17,4%	-16,4%	-23,5%	-9,9%	0,60	0,93	139.179.500	107.161.600	8.258
Telecom Italia sav.	0,542	-4,1%	-16,2%	-12,5%	-20,1%	-9,4%	0,51	0,76	47.308.300	26.132.880	3.263
British Telecom (GBP)	275	3,2%	14,6%	26,5%	28,9%	19,1%	197	278	12.892.580	15.637.780	21.684
Belgacom	20,90	-1,3%	-7,1%	-11,7%	-9,2%	-5,9%	20,36	23,99	611.545	618.699	7.065
Deutsche Telekom	8,19	-5,1%	-8,6%	-11,7%	-8,1%	-4,7%	7,69	10,06	12.923.370	11.887.490	35.405
France Telecom	7,56	-4,1%	-14,0%	-33,3%	-33,0%	-9,3%	7,56	11,79	9.458.043	10.079.330	20.028
KPN	3,25	2,6%	-21,5%	-50,5%	-59,0%	-12,5%	3,07	8,59	20.667.200	17.538.200	4.657
Portugal Telecom	4,04	-3,2%	-2,3%	15,3%	-6,3%	7,7%	3,00	4,46	3.529.062	4.223.821	3.620
Swisscom (CHF)	417	3,4%	3,2%	5,5%	15,6%	5,9%	334	419	125.873	101.187	21.596
Telefonica	9,75	-3,2%	-11,3%	-3,9%	-23,1%	-4,3%	7,90	12,98	23.168.460	26.357.710	44.363
Telenor (NOK)	122,70	3,5%	5,5%	18,6%	21,7%	9,4%	86,90	124,50	2.680.554	1.818.292	191.406
Telia Sonera (SEK)	43,36	-0,5%	-3,3%	-6,1%	-7,5%	-1,6%	41,03	49,65	8.457.768	9.501.576	187.752
Mobile Operators											
Mobistar	19,00	-2,7%	-8,6%	-21,7%	-46,4%	-2,0%	18,03	36,74	202.307	217.074	1.140
Vodafone (GBP)	168	-3,5%	2,9%	-11,1%	-3,3%	8,6%	154	192	102.429.200	99.363.860	82.121

Telecom Italia shares' relative performance vs. DJS Telecom Index in the last 6 months



Debt Ratings

	Moody's		S&P		Fitch	
	rating	outlook	rating	outlook	rating	outlook
Telecom Italia	Baa3	NEG	BBB	*- NEG	BBB	NEG
British Telecom	n.d.	n.d.	BBB	STABLE	n.d.	STABLE
Deutsche Telekom	Baa1	POS	BBB+	STABLE	BBB+	STABLE
France Telecom	A3	NEG	A-	NEG	BBB+	STABLE
KPN	Baa2	Credit Watch	BBB-	Credit Watch	BBB-	STABLE
Portugal Telecom	Baa2	NEG	BB	NEG	n.d.	NEG
Swisscom	A2	STABLE	A	STABLE	n.d.	n.d.
Telefonica	Baa2 *-	n.d.	BBB	NEG	BBB+	NEG
Telia Sonera	A3	STABLE	A-	STABLE	A-	STABLE
Vodafone	A3	STABLE	A-	STABLE	A-	STABLE

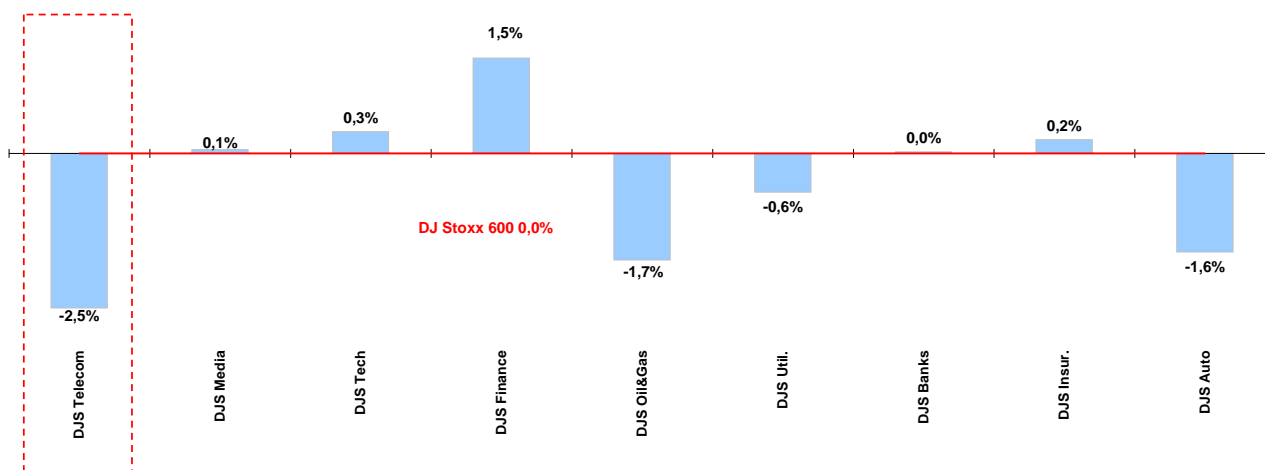
* performance calculated on closing price
** n. of traded shares



Weekly performance for Telecom Italia Shareholders

Telecom European Sector vs. other Sectors

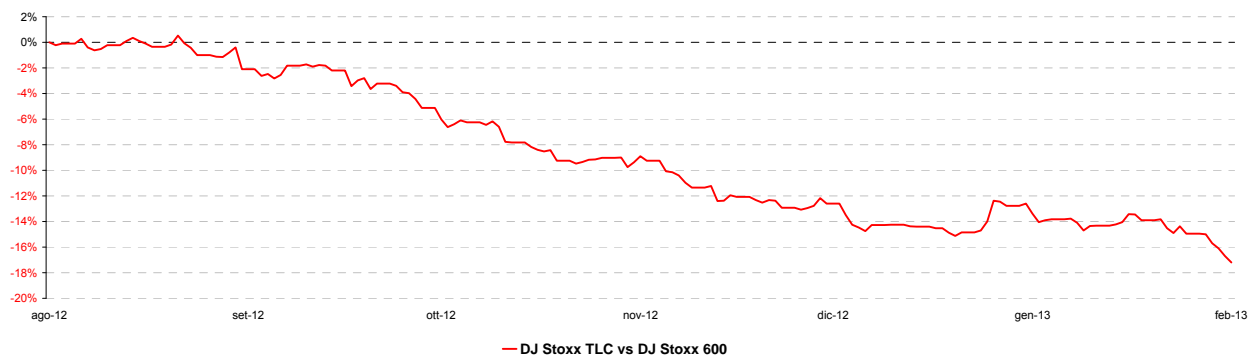
(Performance from 11/02/13 to 15/02/13)



Performance summary of major European sectors

Index	Index Point as of 15-feb-13	Performance (Δ%)*					Last 52 weeks		Daily average volume **	
		1 week	1 month	6 months	1 year	from Jan. 12	Low Price	High Price	1 week	1 month
DJ Stoxx 600	287,34	0,0%	0,5%	6,3%	8,8%	2,7%	233,48	290,45	2.607.248.000	3.241.983.000
Sectors										
DJS Telecom	225,76	-2,5%	-3,6%	-10,9%	-9,2%	0,2%	222,51	256,98	349.882.900	318.009.600
DJS Media	196,54	0,1%	2,1%	7,9%	16,2%	3,5%	151,84	197,32	59.680.710	71.450.250
DJS Tech	247,06	0,3%	5,6%	17,8%	19,7%	7,7%	179,97	249,18	88.117.570	134.711.200
DJS Finance	278,57	1,5%	5,2%	17,3%	16,5%	9,5%	201,32	280,28	39.487.300	37.514.440
DJS Oil&Gas	316,50	-1,7%	-4,7%	-10,1%	-10,9%	-2,0%	298,58	365,52	95.946.990	101.904.800
DJS Util.	246,94	-0,6%	-3,9%	-6,3%	-6,1%	-4,6%	236,35	278,93	149.034.300	165.135.500
DJS Banks	175,80	0,0%	-0,3%	27,1%	12,9%	7,7%	118,77	180,06	1.194.131.000	1.747.805.000
DJS Insur.	178,37	0,2%	-1,6%	13,6%	16,8%	0,7%	125,43	184,50	107.482.400	107.842.000
DJS Auto	366,55	-1,6%	1,2%	16,3%	9,3%	4,4%	261,19	372,61	43.433.360	49.182.000

DJS Telecom's relative performance vs. DJ Stoxx 600 in the last 6 months



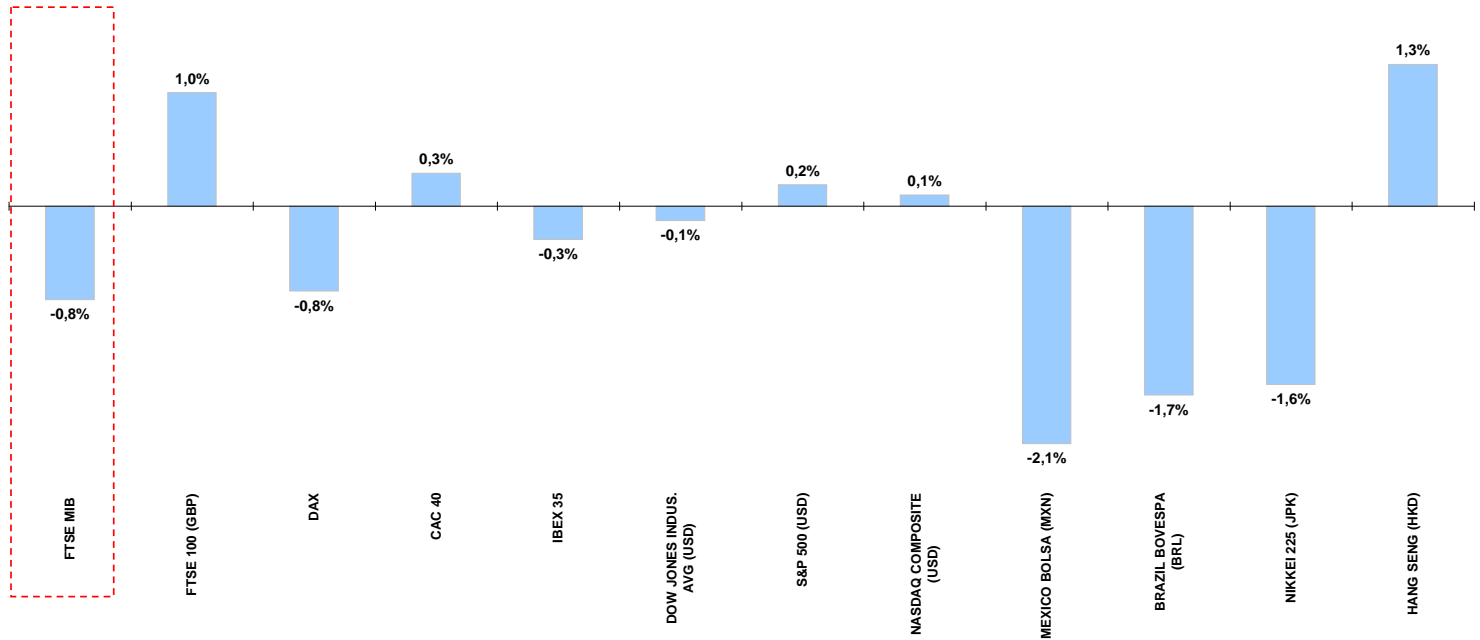
* performance calculated on closing price
 ** n. of traded shares



Weekly performance for Telecom Italia Shareholders

Worldwide Market Stock Exchanges

(Performance from 11/02/13 to 15/02/13)



Performance summary of major Worldwide Market Stock Exchanges

	Index Point as of 15-feb-13	Performance (Δ%)*					Last 52 weeks		Daily average volume **		Market Cap. (mln. local cur.)
		1 week	1 month	6 months	1 year	from Jan. 13	Low Price	High Price	1 week	1 month	
Europe											
FTSE MIB	16.490	-0,8%	-5,6%	12,5%	-0,1%	1,3%	12.296	17.984	887.687.000	1.287.929.000	330.837
FTSE 100 (GBP)	6.328	1,0%	3,4%	8,5%	7,4%	7,3%	5.230	6.385	631.817.100	651.875.600	1.764.730
DAX	7.594	-0,8%	-1,1%	9,3%	12,4%	-0,2%	5.914	7.872	111.531.100	131.680.200	775.371
CAC 40	3.660	0,3%	-1,0%	6,1%	8,0%	0,5%	2.922	3.793	91.617.720	97.042.460	966.827
IBEX 35	8.150	-0,3%	-5,2%	14,3%	-6,8%	-0,2%	5.905	8.864	282.476.400	408.399.000	423.858
America											
DOW JONES INDUS. AVG (USD)	13.974	-0,1%	3,2%	6,2%	9,3%	6,6%	12.035	14.039	107.977.700	126.838.400	1.820
S&P 500 (USD)	1.521	0,2%	3,3%	8,2%	13,2%	6,6%	1.267	1.525	467.226.700	537.108.400	14.041.152
NASDAQ COMPOSITE (USD)	3.197	0,1%	2,8%	5,5%	9,6%	5,9%	2.727	3.206	391.250.600	401.762.400	4.923.377
MEXICO BOLSA (MXN)	44.121	-2,1%	-1,4%	8,2%	16,5%	1,0%	36.756	46.075	288.531.100	221.472.700	2.489.789
BRAZIL BOVESPA (BRL)	57.944	-1,7%	-6,1%	-0,4%	-11,4%	-4,9%	52.213	68.970	336.452.700	359.312.900	58.077
MERVAL INDEX (ARG)	3.310	0,6%	7,4%	35,6%	21,4%	15,9%	2.118	3.545	7.796.456	9.264.594	3.304
Asia											
NIKKEI 225 (JPK)	11.174	-1,6%	2,4%	22,0%	19,1%	7,5%	8.239	11.498	3.061.604.000	2.614.798.000	279.066
HANG SENG (HKD)	23.445	1,3%	-0,7%	16,5%	9,1%	3,5%	18.056	23.945	1.617.037.000	1.722.633.000	7.323.580

* performance calculated on closing price

** n. of traded shares

This document was prepared by the Telecom Italia S.p.A. Investor Relations department. The Company has adopted a Self-Regulatory Code and a Code of Ethics and Conduct, both of which can be consulted online at www.telecomitalia.it, under the Corporate Governance section. The information and data contained in this document derive from public information provided by Bloomberg (www.Bloomberg.com), Telecom Italia Group data provider, or from the websites of the companies referred to in this document, and were correct at 5:45pm on the date of publication of this document. The data reported in this document is provided by sources deemed to be trustworthy and in good faith: in no case can this be considered an affirmation or guarantee, explicit or implicit, of the reliability, completeness or correctness of the data. The companies, whose share information is reported in the tables, are listed according to the following criteria: operative in the telecommunications or European media sector, market capitalisation, presence on the various indexes. The company, directors, representatives or employees of the Group accept no responsibility for eventual damages – direct or indirect, to property or otherwise – deriving from the use of information reported herein. This document has been published for information purposes only. It does not form part and can in no way be considered as a request to sell or underwrite financial instruments or as an offer to purchase or exchange financial instruments. Likewise, this document has not been produced to recommend or propose, in any form whatsoever, any investment strategy relating to one or more financial instruments or to suppliers of financial instruments referred to in this document. This document is distributed by the Telecom Italia Investor Relations department from the date of its completion and is made available to Club TI Always ON subscribers via e-mail. This document is the exclusive property of Telecom and may not be reproduced or redistributed, directly or indirectly, to third persons, or published, in whole or in part, for any reason without the prior permission of Telecom Italia.