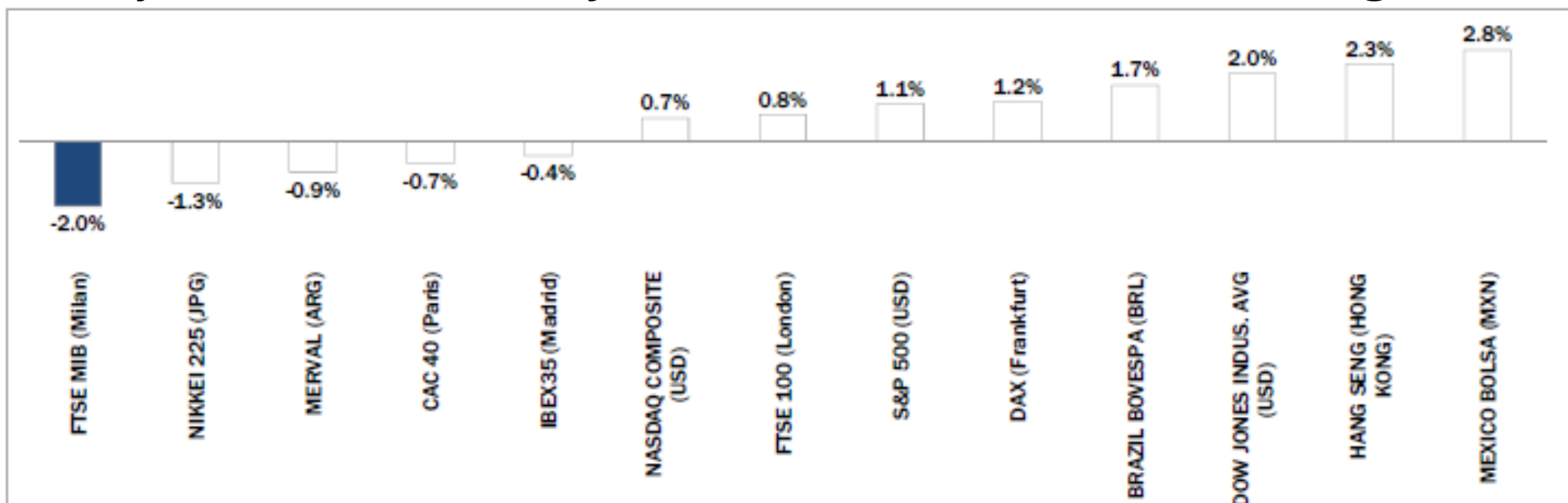


Weekly Stock Market Report for Telecom Italia Retail Shareholders

March 14th – March 18th, 2016

Weekly Performance of Major Worldwide Market Stock Exchanges

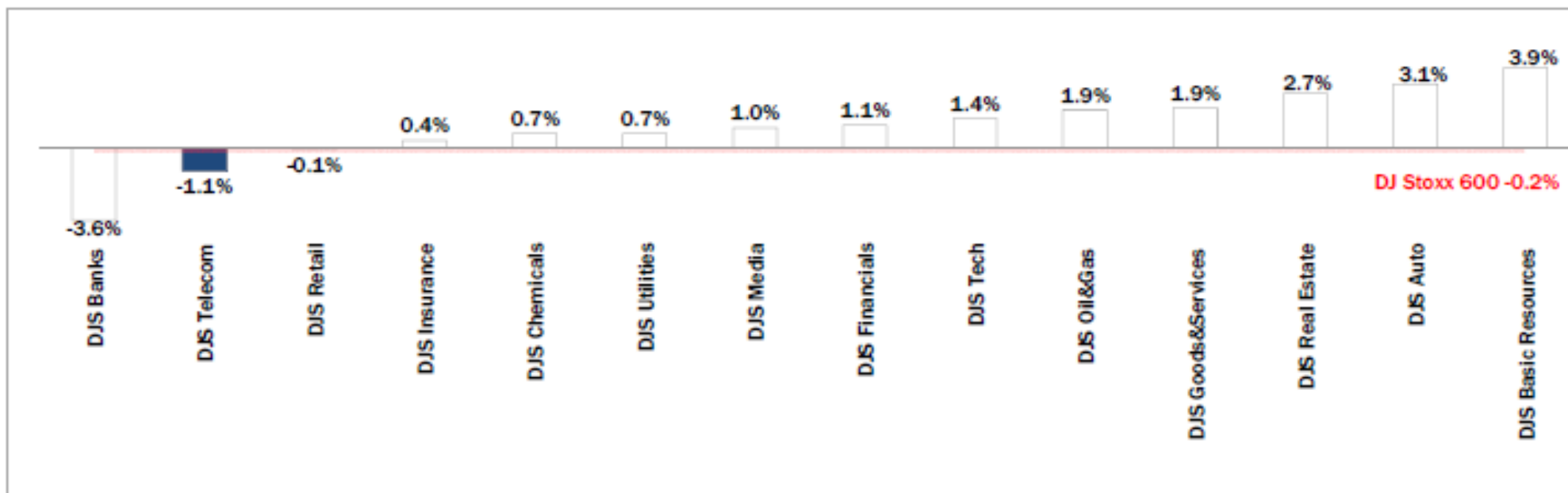


| Index | Index Point as of 18-Mar-16 | Performance (%)** | | | | | Last 52 weeks | | Daily average volume ** | | Market Cap (min. local cur.) |
|----------------------------|-----------------------------|-------------------|---------|----------|--------|---------------|---------------|------------|-------------------------|---------------|------------------------------|
| | | 1 week | 1 month | 6 months | 1 year | from Jan. '16 | Low Price | High Price | 1 week | 1 month | |
| Europe | | | | | | | | | | | |
| FTSE MIB (Milan) | 18,611 | -2.0% | 8.8% | -13.5% | -17.5% | -13.1% | 15,773 | 24,157 | 927,578,867 | 994,125,879 | 404,453 |
| FTSE 100 (London) | 6,190 | 0.8% | 3.6% | 1.4% | -10.9% | -0.8% | 5,500 | 7,123 | 740,126,733 | 895,804,966 | 1,730,805 |
| DAX (Frankfurt) | 9,951 | 1.2% | 5.1% | 0.3% | -16.5% | -7.4% | 8,699 | 12,391 | 99,332,904 | 113,553,977 | 969,652 |
| CAC 40 (Paris) | 4,463 | -0.7% | 5.3% | -1.6% | -11.3% | -3.8% | 3,992 | 5,284 | 133,078,971 | 138,968,368 | 1,217,732 |
| IBEX35 (Madrid) | 9,051 | -0.4% | 9.1% | -8.1% | -18.1% | -5.2% | 7,746 | 11,885 | 490,374,227 | 452,615,362 | 535,660 |
| America | | | | | | | | | | | |
| DOW JONES INDUS. AVG (USD) | 17,565 | 2.0% | 7.0% | 7.2% | -2.9% | 0.9% | 15,370 | 18,351 | 109,968,396 | 116,999,927 | 5,272,274 |
| S&P 500 (USD) | 2,045 | 1.1% | 6.6% | 4.5% | -2.6% | 0.1% | 1,810 | 2,135 | 599,519,309 | 731,236,585 | 18,480,934 |
| NASDAQ COMPOSITE (USD) | 4,783 | 0.7% | 6.6% | -0.9% | -4.0% | -4.5% | 4,210 | 5,232 | 406,846,048 | 490,618,565 | 7,214,081 |
| MEXICO BOLSA (MXN) | 45,962 | 2.8% | 5.6% | 5.5% | 3.6% | 7.0% | 39,257 | 46,078 | 240,154,026 | 238,238,196 | 2,157,710 |
| MERVAL (ARG) | 12,931 | -0.9% | 7.9% | 22.5% | 14.7% | 10.8% | 8,660 | 14,597 | 11,731,332 | 11,612,049 | 12,970 |
| BRAZIL BOVESPA (BRL) | 50,485 | 1.7% | 21.7% | 6.8% | -2.0% | 16.5% | 37,046 | 58,575 | 590,959,565 | 508,839,028 | 1,653,489 |
| Asia | | | | | | | | | | | |
| NIKKEI 225 (JPG) | 16,725 | -1.3% | 4.7% | -7.4% | -14.5% | -12.1% | 14,866 | 20,953 | 1,439,699,779 | 1,843,313,660 | 301,306,368 |
| HANG SENG (HONG KONG) | 20,672 | 2.3% | 7.2% | -5.0% | -15.2% | -5.7% | 18,279 | 28,589 | 1,632,433,765 | 1,674,446,242 | 13,070,467 |

** performance calculated on closing price, ** n. of trades/shares

Source: Bloomberg LP

Weekly Performance of Major European Sectors



| Index | Index Point as of 18-Mar-16 | Performance (Δ%)* | | | | | Last 52 weeks | | Daily average volume ** | | Market Cap (mln. local cur.) |
|-------|-----------------------------|-------------------|---------|----------|--------|---------------|---------------|------------|-------------------------|---------|------------------------------|
| | | 1 week | 1 month | 6 months | 1 year | from Jan. '16 | Low Price | High Price | 1 week | 1 month | |

| | | | | | | | | | | | |
|---------------------|--------|-------|-------|--------|--------|--------|--------|--------|---------------|---------------|--------------|
| Index | | | | | | | | | | | |
| DJ Stoxx 600 | 341.71 | -0.2% | 3.9% | -3.7% | -14.3% | -6.6% | 302.59 | 415.18 | 3,573,263,053 | 3,622,967,543 | 8,861,828.00 |
| Sectors | | | | | | | | | | | |
| DJS Telecom | 329.11 | -1.1% | 2.1% | -3.7% | -10.5% | -5.2% | 295.61 | 399.43 | 236,469,955 | 308,900,921 | 467,606.34 |
| DJS Auto | 503.05 | 3.1% | 6.9% | -4.8% | -23.2% | -11.0% | 416.06 | 684.87 | 40,540,382 | 49,742,333 | 292,178.63 |
| DJS Banks | 153.96 | -3.6% | 7.6% | -18.6% | -26.4% | -15.7% | 130.03 | 227.47 | 1,868,180,070 | 1,704,326,468 | 997,949.56 |
| DJS Basic Resources | 277.33 | 3.9% | 13.8% | -6.2% | -31.1% | 13.2% | 181.36 | 436.23 | 173,191,643 | 197,712,683 | 189,975.98 |
| DJS Chemicals | 767.5 | 0.7% | 4.1% | -3.2% | -20.3% | -7.0% | 687.78 | 999.46 | 18,743,852 | 22,211,423 | 375,554.63 |
| DJS Oil&Gas | 272.24 | 1.9% | 8.8% | 4.5% | -10.4% | 3.8% | 222.42 | 347.07 | 242,476,954 | 300,609,711 | 473,397.06 |
| DJS Financials | 404.88 | 1.1% | 6.5% | -4.0% | -10.7% | -9.6% | 344.56 | 483.43 | 31,101,645 | 35,902,611 | 166,517.89 |
| DJS Goods&Services | 422.8 | 1.9% | 6.1% | 3.0% | -12.0% | -1.4% | 360.76 | 494.3 | 158,269,965 | 189,011,083 | 952,974.38 |
| DJS Insurance | 256.14 | 0.4% | 6.4% | -1.1% | -14.6% | -10.3% | 218.94 | 308.93 | 138,611,446 | 139,012,011 | 506,925.03 |
| DJS Media | 296.28 | 1.0% | 4.6% | -0.7% | -9.3% | -2.9% | 258.78 | 339.86 | 53,325,062 | 65,304,207 | 277,689.66 |
| DJS Tech | 334.08 | 1.4% | 4.1% | 7.0% | -8.4% | -6.1% | 284.27 | 379.24 | 46,509,540 | 61,384,515 | 325,570.63 |
| DJS Utilities | 289.72 | 0.7% | 2.6% | 0.8% | -11.2% | -4.7% | 265.83 | 342.48 | 182,194,739 | 194,583,980 | 396,325.28 |
| DJS Retail | 322.2 | -0.1% | 1.4% | -3.5% | -12.9% | -4.3% | 294.4 | 383.51 | 92,512,806 | 111,682,369 | 358,607.06 |
| DJS Real Estate | 178.53 | 2.7% | 6.4% | -0.9% | -8.4% | -2.6% | 157.29 | 201.27 | 30,246,619 | 29,514,265 | 159,461.20 |

* Performance calculated on a rolling basis ** in thousands of shares

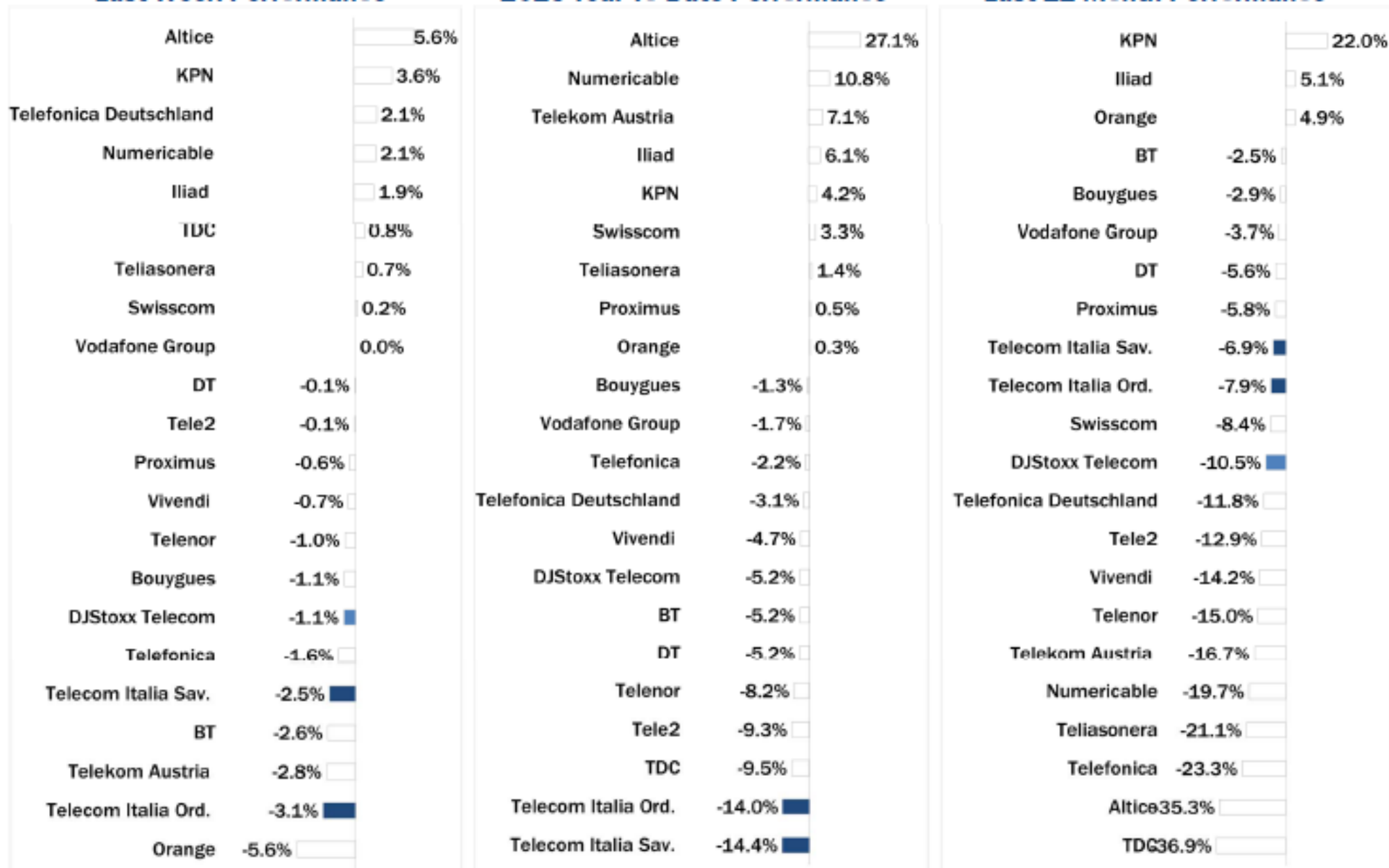
Source: Bloomberg LP

Europe: Stock Performance of Main TLC Operators

Last Week Performance

2016 Year-To-Date Performance

Last 12 Month Performance

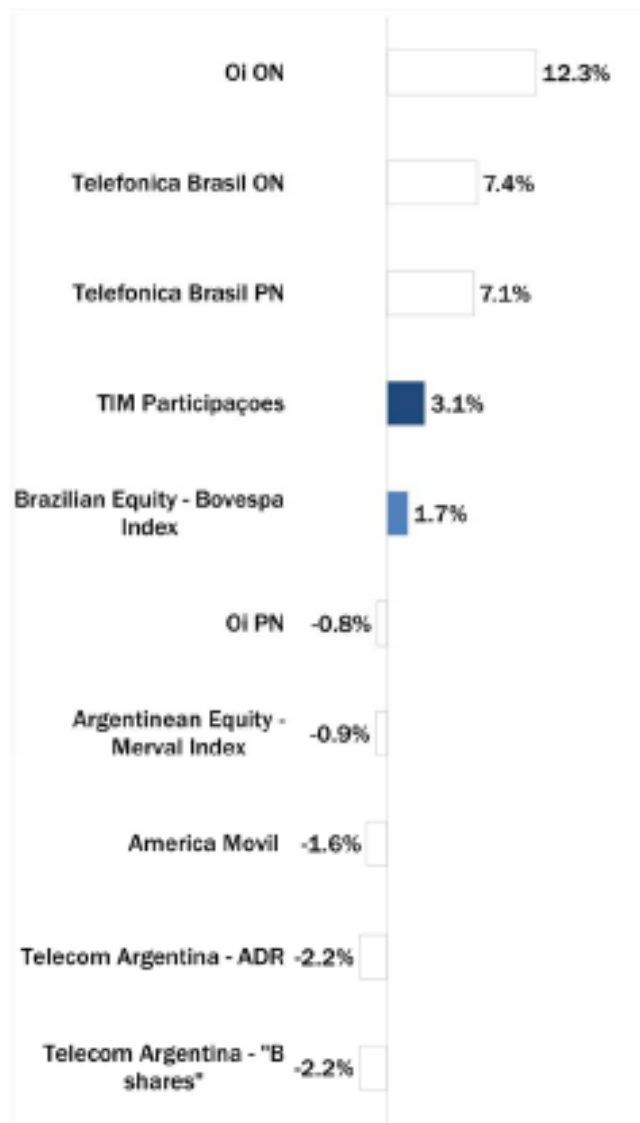


NB: Weekly performances are referred to last 5 open market sessions.

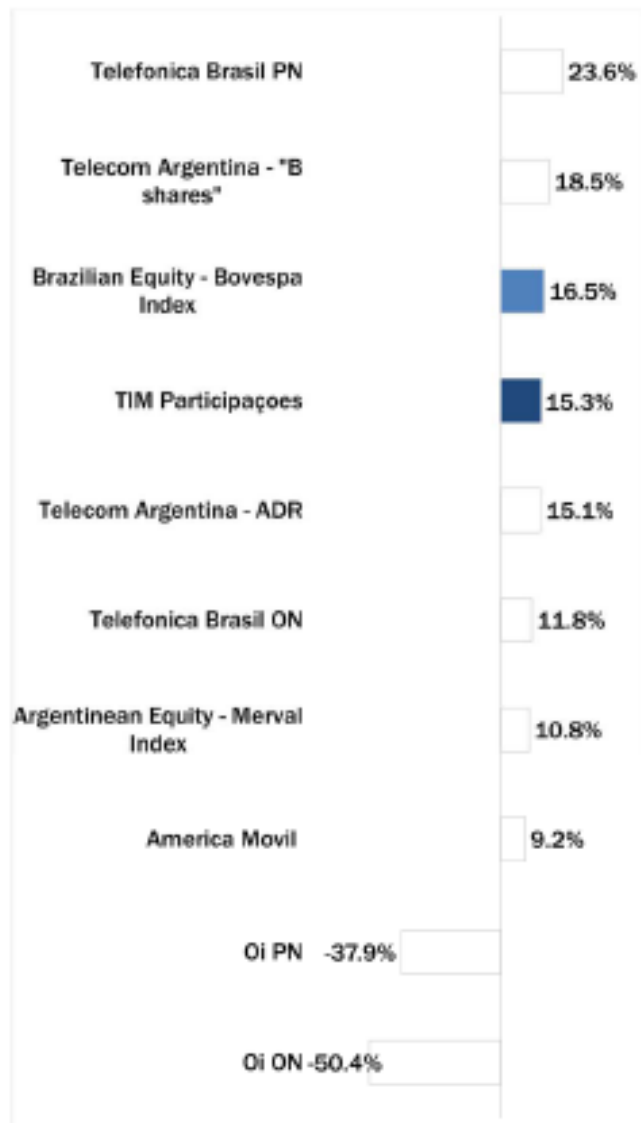


Latam: Stock Performance of Main TLC Operators

Last Week Performance



2016 Year-To-Date Performance



Last 12 Month Performance



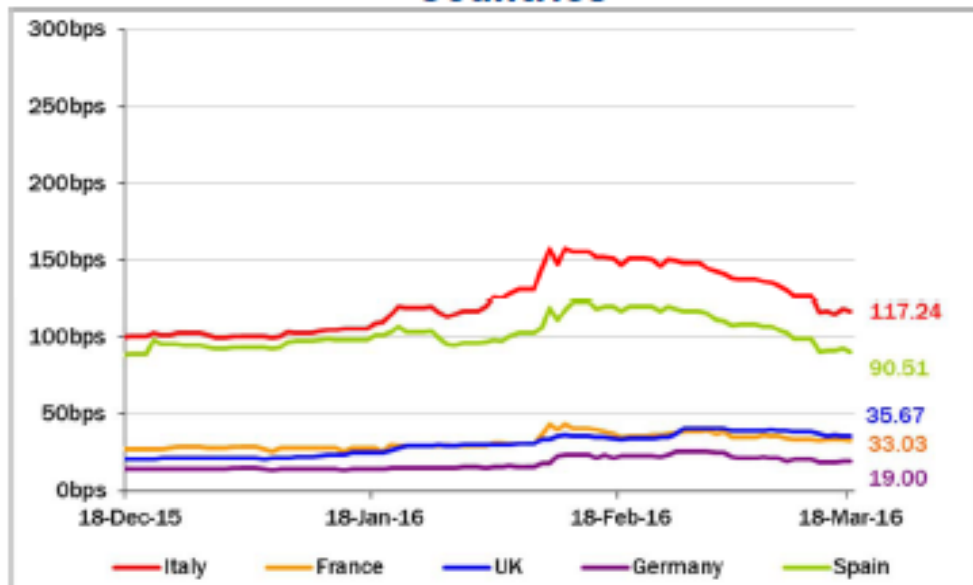
European Telecoms Sector: Credit Outlook

Long-term Credit Ratings

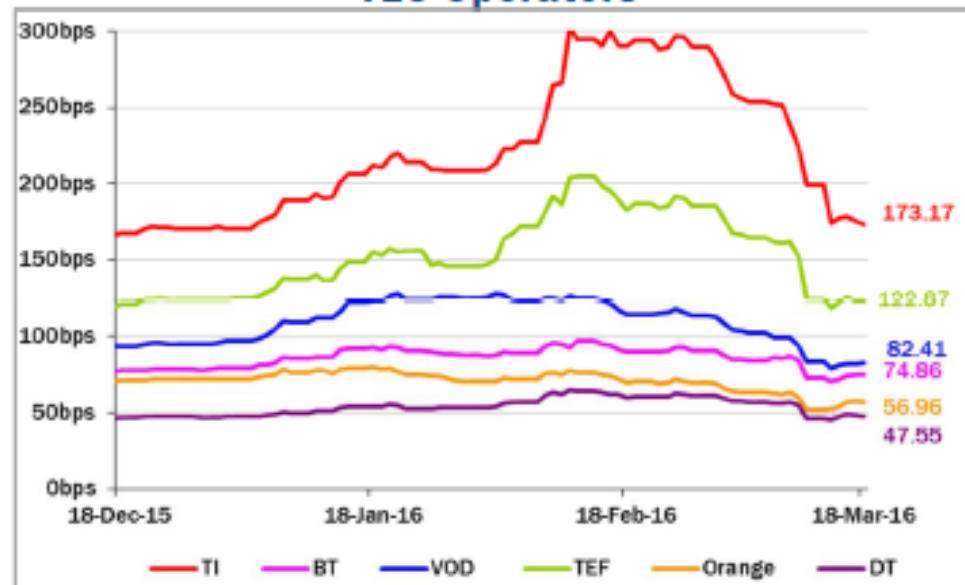
| | Moody's | | S&P | | Fitch | |
|------------------------|------------|------------|------------|---------------|-------------|---------------|
| | rating | outlook | rating | outlook | rating | outlook |
| TELECOM ITALIA | Ba1 | NEG | BB+ | STABLE | BBB- | STABLE |
| ALTICE | n.a. | n.a. | B+ | NEG | n.a. | n.a. |
| BT GROUP | Baa2 | POS | BBB | POS | BBB+ | STABLE |
| DEUTSCHE TELEKOM | Baa1 | STABLE | BBB+ | STABLE | BBB+ | STABLE |
| KPN | Baa3 | STABLE | BBB- | STABLE | BBB- | POS |
| ORANGE | Baa1 | STABLE | BBB+ | STABLE | BBB+ | STABLE |
| PROXIMUS | A1 | STABLE | A | STABLE | n.a. | n.a. |
| SWISSCOM | A2 | STABLE | A | STABLE | n.a. | n.a. |
| TELEFONICA | Baa2 | STABLE | BBB | POS | BBB+ | STABLE |
| TELEKOM AUSTRIA | Baa2 | STABLE | BBB | STABLE | n.a. | n.a. |
| TELENOR | A3 | STABLE | A | STABLE | NR | n.a. |
| TELIASONERA | A3 *- | * CW NEG | A- | STABLE | A- | STABLE |
| VODAFONE GROUP | Baa1 | STABLE | BBB+ | STABLE | BBB+ | STABLE |
| WIND TELECOMUNICAZIONI | B2 | POS | BB- | POS | B+ | STABLE |
| OI GROUP | Caa1 | NEG | CCC | NEG | B *- | * CW NEG |

5 Years CDS levels

Countries



TLC Operators



Telecom Italia Group – Weekly Performance: Price (€) and Volumes (mln)

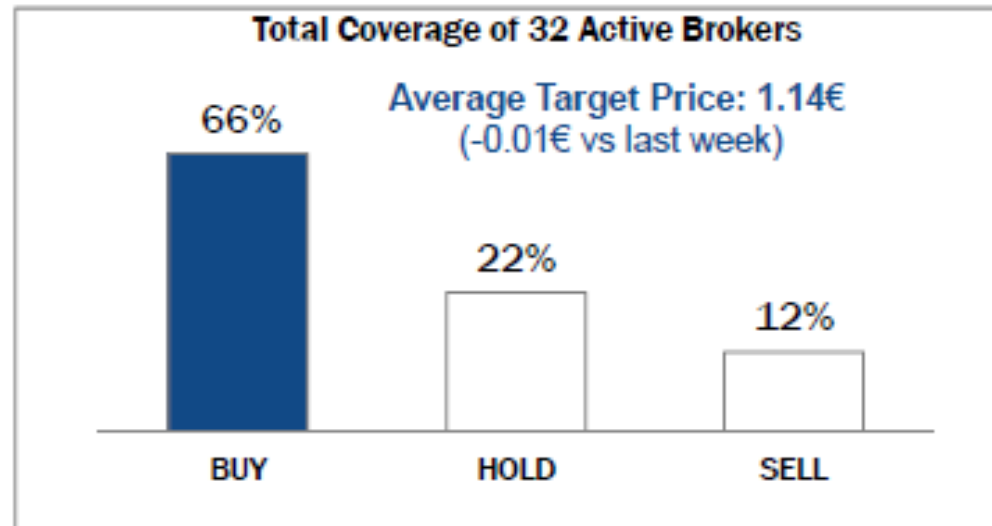
TI Ordinary Shares



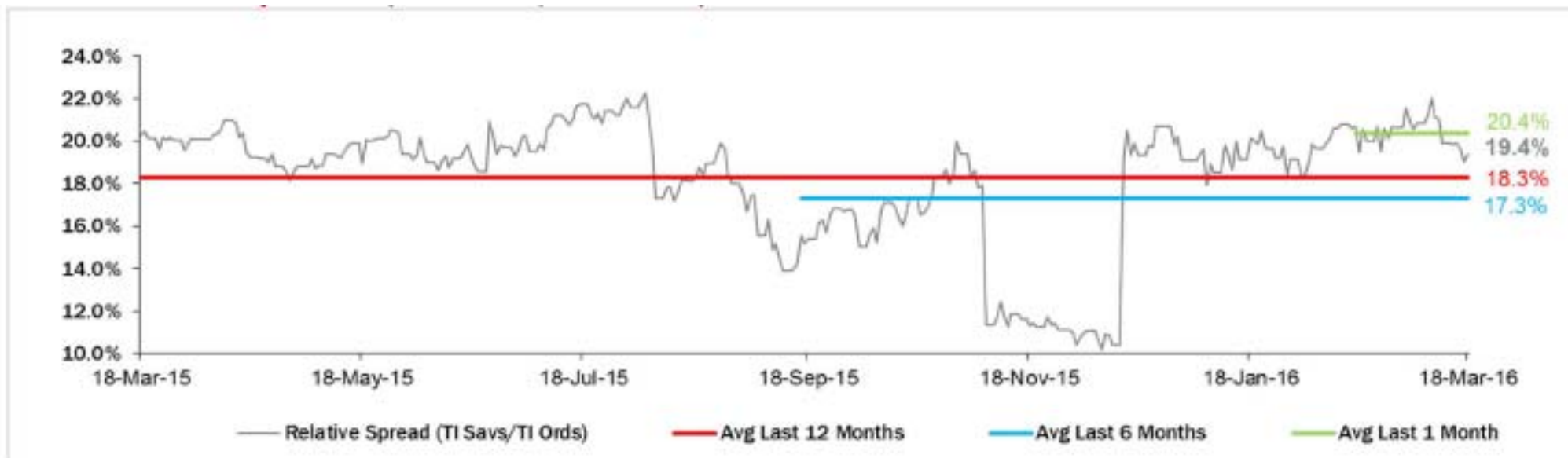
TI Saving Shares



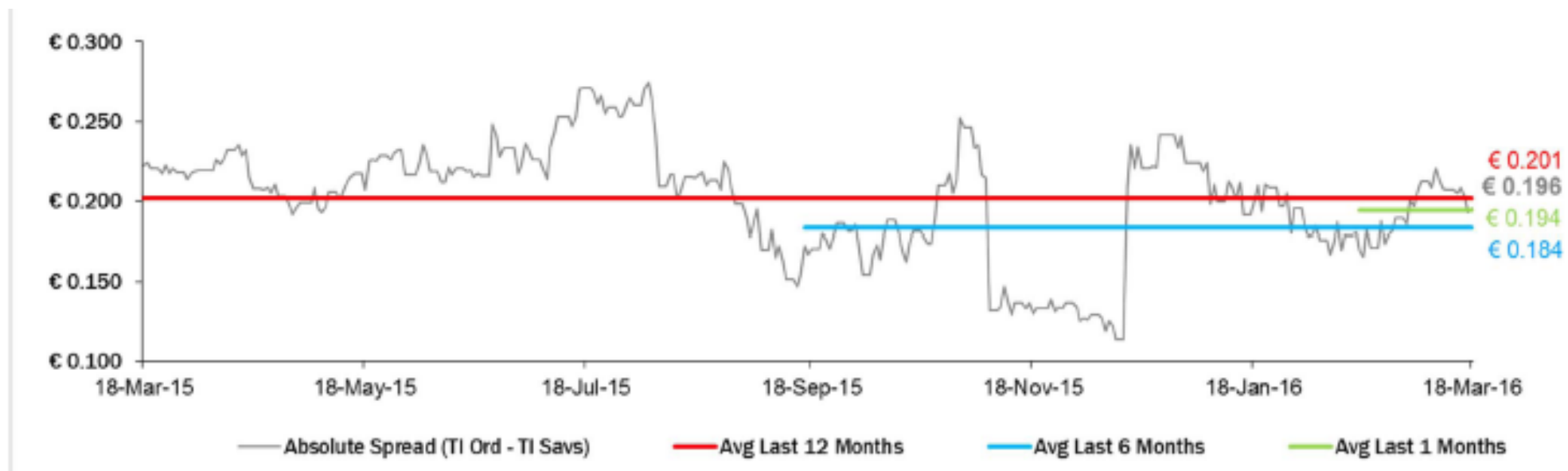
Analysts' Recommendations on TI Ords



Relative Spread (TI Savs /TI Ords): Evolution over the Last 12 Months



Absolute Spread (TI Ords – TI Savs): Evolution over the Last 12 Months



Performance Summary of Main European TLC Operators



| Country | Q. Price (local currency) 18-Mix-15 | Performance (%)* | | | | | Last 52 weeks | | Daily average volume ** | | Market Cap. (all in €Mn) | |
|----------------------------------|---|------------------|------------|-------------|-----------|------------------|---------------|---------------|-------------------------|-------------|--------------------------------|--------|
| | | 1 week | 1 month | 6 months | 1 year | from Jan. '15 | Low Price | High Price | 1 week | 1 month | | |
| EUROPEAN TLC OPERATORS | | | | | | | | | | | | |
| <i>Index</i> | | | | | | | | | | | | |
| DIStox Telecom | EU | 328.11 | -1.1% | 2.1% | -8.7% | -10.5% | -5.2% | 285.61 | 388.48 | 286,468,825 | 308,800,821 | |
| TLC Operators | | | | | | | | | | | | |
| Abice | NL | 16.84 | 5.6% | 28.8% | -28.8% | -85.8% | 27.1% | 8.873 | 85.800 | 3,388,438 | 2,487,768 | 18,784 |
| Bouygues | FR | 96.06 | -1.1% | 2.8% | 8.8% | -2.8% | -1.8% | 90.023 | 98.240 | 848,504 | 878,825 | 12,443 |
| BT | GB | 447.00 | -2.6% | -8.7% | 7.7% | -2.5% | -5.2% | 404.000 | 502.600 | 17,886,460 | 17,072,280 | 57,234 |
| C&VComm | US | 74.10 | 2.6% | 1.2% | 27.2% | 28.1% | -0.8% | 53.000 | 78.850 | 5,054,422 | 7,056,687 | 4,228 |
| DT | DE | 15.82 | -0.1% | 2.8% | 0.4% | -5.6% | -5.2% | 18.885 | 17.625 | 8,684,429 | 11,282,880 | 72,854 |
| Eisa | FI | 83.44 | 1.1% | 2.0% | 12.6% | 95.2% | -8.8% | 28.010 | 95.880 | 278,571 | 358,840 | 5,586 |
| Freemove | DE | 26.60 | -5.7% | -5.4% | -8.5% | -0.8% | -15.1% | 24.820 | 38.105 | 480,087 | 485,578 | 3,406 |
| Orange | FR | 15.58 | -5.6% | -2.8% | 11.1% | 4.8% | 0.8% | 12.210 | 16.875 | 8,680,616 | 8,568,236 | 41,137 |
| OTE | GR | 7.40 | -7.2% | 5.0% | -8.0% | -12.8% | -18.8% | 5.750 | 8.470 | 708,439 | 808,816 | 3,627 |
| Iliad | FR | 288.85 | 1.8% | 4.5% | 22.5% | 5.1% | 6.1% | 178.050 | 288.100 | 181,657 | 108,184 | 18,887 |
| Immersat | GB | 824.50 | 0.7% | -7.4% | -6.5% | -1.8% | -18.7% | 881.000 | 1,158.000 | 1,380,008 | 1,468,718 | 5,856 |
| KPN | NL | 3.64 | 8.6% | 6.5% | 8.8% | 22.0% | 4.2% | 2.862 | 3.685 | 14,853,070 | 14,746,100 | 15,538 |
| Numericable | FR | 37.12 | 2.1% | 18.0% | -2.6% | -18.7% | 10.8% | 27.050 | 48.640 | 407,141 | 238,086 | 16,338 |
| Proximus | BE | 80.16 | -0.6% | -2.4% | -5.5% | -5.8% | 0.5% | 27.860 | 85.215 | 627,104 | 688,820 | 10,185 |
| Sunrise | CH | 68.00 | 4.5% | 17.6% | 24.8% | n.a. | n.a. | 48.400 | 80.000 | 140,150 | 100,234 | 2,846 |
| Swisscom | CH | 518.50 | 0.2% | 5.2% | 6.6% | -6.4% | 3.8% | 482.700 | 580.500 | 122,618 | 186,056 | 24,670 |
| TalkTalk | GB | 244.60 | 4.8% | 21.5% | -22.1% | -28.2% | 12.5% | 184.000 | 415.100 | 785,286 | 1,046,878 | 3,005 |
| TDC | DK | 81.14 | 0.8% | 1.1% | -17.2% | -86.8% | -8.5% | 28.240 | 58.750 | 2,841,860 | 3,514,888 | 3,888 |
| Telia2 | SE | 76.85 | -0.1% | 7.8% | -4.6% | -12.8% | -8.8% | 65.850 | 105.820 | 2,211,320 | 2,615,288 | 3,755 |
| Telecom Italia Ord. | IT | 1.010 | -8.1% | 14.1% | -8.7% | -7.8% | -14.0% | 0.787 | 1.816 | 85,428,850 | 186,710,200 | 18,685 |
| Telecom Italia Sev. | IT | 0.815 | -2.5% | 15.8% | -12.8% | -6.8% | -14.4% | 0.685 | 1.122 | 28,876,520 | 28,788,800 | 4,810 |
| Telefonica | ES | 10.01 | -1.6% | 6.8% | -11.5% | -28.8% | -2.2% | 8.488 | 14.805 | 28,557,010 | 28,275,100 | 48,802 |
| Telefonica Deutschland | DE | 4.74 | 2.1% | 4.6% | -15.6% | -11.8% | -8.1% | 4.072 | 5.884 | 1,832,790 | 2,888,886 | 14,086 |
| Telenor | NO | 186.10 | -1.0% | 7.8% | -15.8% | -15.0% | -8.2% | 116.800 | 186.100 | 1,782,278 | 2,581,222 | 21,665 |
| Telekom Austria | AT | 5.40 | -2.8% | 7.8% | 3.8% | -16.7% | 7.1% | 4.660 | 6.750 | 1,021,568 | 982,287 | 3,580 |
| Telssonera | SE | 42.78 | 0.7% | 7.0% | -6.7% | -21.1% | 1.4% | 37.040 | 55.850 | 10,521,840 | 12,185,600 | 18,886 |
| Vivendi | FR | 18.82 | -0.7% | 4.8% | -11.8% | -14.2% | -4.7% | 16.285 | 24.880 | 8,846,878 | 5,825,278 | 25,880 |
| Vodafone Group | GB | 217.85 | 0.0% | 0.8% | 0.8% | -8.7% | -1.7% | 187.700 | 298.000 | 38,085,370 | 51,602,240 | 74,207 |
| EUROPEAN TOWERS OPERATORS | | | | | | | | | | | | |
| Inwit | IT | 4.64 | 0.6% | 2.1% | 5.8% | n.a. | 27.0% | 8.650 | 5.180 | 1,017,788 | 682,161 | 2,782 |
| E Towers | IT | 50.80 | -8.2% | 2.7% | -11.7% | 0.7% | -15.5% | 46.420 | 58.750 | 80,768 | 25,050 | 1,422 |
| Rai Vty | IT | 4.75 | 1.5% | 6.7% | 8.7% | 11.8% | 0.7% | 3.812 | 5.400 | 61,684 | 87,408 | 1,282 |
| Cellinax Telecom (Abertis) | ES | 14.81 | -2.8% | 1.2% | -7.5% | n.a. | 2.2% | 18.225 | 17.500 | 1,881,185 | 1,878,060 | 3,814 |

* performance calculated on closing price

** n. of traded shares

Source: Bloomberg LP

Performance Summary of FTSE MIB



| Index | Cl. Price € 18-Nov-16 | Performance (%)** | | | | | Last 52 weeks | | Daily average volume | | Market** Cap. mil. Euro |
|--------------------------------------|--------------------------|-------------------|-------------|---------------|---------------|------------------|---------------|---------------|----------------------|----------------------|-------------------------------|
| | | 1 week | 1 month | 6 months | 1 year | from Jan. '16 | Low Price | High Price | 1 week | 1 month | |
| FTSE MIB (Milan) | 18,611 | -2.0% | 8.8% | -18.5% | -17.5% | -18.1% | 15,778 | 24,157 | 927,578,867 | 994,125,879 | 404,498 |
| FTSE Italia All-Share (Milan) | 20,270 | -1.5% | 8.8% | -12.4% | -15.8% | -12.8% | 17,273 | 25,746 | 1,157,002,867 | 1,180,254,419 | 502,169 |
| Secola FTSE MIB Index | | | | | | | | | | | |
| A2A Spa | 1.11 | -2.4% | 7.6% | -1.2% | 17.5% | -11.2% | 0.98 | 1.37 | 12,354,180 | 13,774,410 | 3,487 |
| Arina Holding Spa | 6.54 | 1.6% | 6.2% | -22.4% | 10.9% | -18.5% | 5.10 | 9.87 | 1,863,230 | 2,167,409 | 1,961 |
| Atelvia Spa | 24.27 | -0.5% | 5.6% | -1.3% | 0.7% | -0.9% | 20.84 | 25.74 | 1,895,012 | 2,183,013 | 20,042 |
| Asinus Holding Spa | 19.95 | 0.2% | 11.5% | 0.7% | -20.0% | -13.4% | 15.09 | 29.58 | 1,251,579 | 1,141,972 | 2,859 |
| Banco Mediocredito Spa | 6.84 | -2.2% | 10.6% | 1.6% | -5.3% | -6.4% | 5.13 | 8.48 | 1,354,922 | 1,757,064 | 5,021 |
| Banco Monte Dei Paschi Siena | 0.60 | 3.4% | 15.2% | -64.4% | -74.4% | -51.7% | 0.42 | 2.59 | 146,273,600 | 126,937,200 | 1,746 |
| Banco Pool Emilia Romagna | 4.72 | -7.6% | -4.0% | -38.0% | -38.1% | -32.9% | 3.67 | 8.65 | 9,121,160 | 7,652,840 | 2,273 |
| Banco Poolare Di Milano | 0.67 | -9.4% | 1.1% | -28.0% | -27.8% | -27.5% | 0.54 | 1.04 | 77,002,320 | 70,189,950 | 2,932 |
| Banco Poolare So | 6.85 | -14.0% | -11.3% | -51.9% | -50.4% | -46.6% | 6.27 | 16.55 | 9,466,075 | 6,375,497 | 2,479 |
| Buzzi Unicem Spa | 15.01 | 0.0% | 11.6% | -3.6% | 13.0% | -9.6% | 11.67 | 17.79 | 789,895 | 1,051,053 | 2,844 |
| Deide Camozzi-Milano Spa | 8.70 | 9.4% | 22.7% | 23.3% | 33.3% | 8.7% | 6.26 | 8.79 | 3,154,820 | 2,021,326 | 5,050 |
| Eni Industrial Nv | 6.16 | -0.6% | 5.9% | -4.0% | -16.6% | -2.8% | 5.17 | 8.92 | 4,117,457 | 4,851,282 | 8,371 |
| Enel Spa | 3.92 | 0.1% | 7.9% | 0.9% | -5.1% | 0.6% | 3.33 | 4.50 | 36,966,830 | 42,642,240 | 36,824 |
| Enel Green Power Spa | 1.90 | 0.2% | 8.4% | 17.2% | 3.9% | 1.0% | 1.56 | 2.04 | 16,061,220 | 14,159,790 | 9,505 |
| Eni Spa | 13.73 | 3.1% | 14.7% | -5.4% | -11.6% | -0.5% | 10.93 | 17.66 | 19,354,330 | 21,714,520 | 49,897 |
| Evor Spa | 30.75 | -0.5% | 10.4% | -24.7% | -25.6% | -26.9% | 23.13 | 47.18 | 399,593 | 692,732 | 7,572 |
| Ferrari Nv | 37.80 | -0.2% | 9.1% | n.a. | n.a. | n.a. | 27.91 | 46.19 | 700,846 | 1,079,396 | 7,141 |
| Fiat Chrysler Automobiles Nv | 7.12 | 4.9% | 22.1% | -15.8% | -28.6% | -16.9% | 5.07 | 10.51 | 18,328,400 | 23,193,370 | 9,202 |
| Fimcoenergia Spa | 11.17 | 6.0% | 18.5% | -7.8% | -1.1% | -13.4% | 8.51 | 13.94 | 5,099,516 | 4,989,910 | 6,438 |
| Assicurazioni Generali | 13.65 | -1.8% | 15.4% | -15.0% | -24.8% | -19.3% | 10.90 | 18.70 | 8,754,716 | 9,666,778 | 21,251 |
| Inassa Sanacolo | 2.49 | -8.9% | 4.9% | -19.1% | -17.6% | -19.3% | 2.12 | 3.65 | 177,432,700 | 165,085,900 | 41,715 |
| Intemiani Spa | 10.32 | 1.6% | 1.0% | 3.0% | 44.1% | 0.7% | 5.42 | 10.37 | 2,599,596 | 2,560,503 | 3,604 |
| Luxottica Group Spa | 48.70 | -3.8% | -8.2% | -17.0% | -16.2% | -19.4% | 48.00 | 67.80 | 831,668 | 1,078,699 | 23,554 |
| Mediatec Spa | 3.77 | 2.7% | 20.5% | -13.8% | -11.4% | -1.6% | 2.77 | 4.93 | 8,410,941 | 9,344,705 | 4,453 |
| Mediobanca Spa | 6.74 | -7.1% | 11.9% | -23.7% | -21.3% | -24.1% | 5.42 | 10.15 | 6,574,716 | 5,629,429 | 5,871 |
| Monter Spa | 14.68 | -4.1% | 6.6% | -7.1% | -3.5% | 13.6% | 11.30 | 19.00 | 1,024,390 | 1,533,348 | 3,672 |
| Physon Spa | 19.55 | 0.4% | 11.3% | 2.1% | 4.3% | -3.5% | 16.06 | 22.35 | 926,941 | 1,202,330 | 4,237 |
| Saiem Spa | 0.38 | -1.4% | 9.6% | -62.7% | -66.0% | -59.8% | 0.28 | 1.62 | 112,578,900 | 143,684,000 | 3,836 |
| Salvatore Ferragamo Spa | 22.65 | 2.0% | 8.8% | -3.0% | -23.7% | 4.1% | 18.50 | 32.55 | 699,866 | 747,012 | 3,823 |
| Snam Spa | 5.22 | 2.1% | 6.1% | 17.9% | 16.5% | 8.1% | 4.05 | 5.38 | 12,439,470 | 14,317,530 | 18,273 |
| Senoflextronics Nv | 5.12 | -4.3% | -2.2% | -17.4% | -43.9% | -18.3% | 4.53 | 9.60 | 3,630,727 | 4,114,033 | 4,498 |
| Telecom Italia Spa | 1,010 | -8.1% | 14.1% | -8.7% | -7.9% | -14.0% | 0.80 | 1.82 | 85,428,950 | 186,710,200 | 18,545 |
| Teneris Sa | 10.72 | -0.6% | 10.7% | -5.1% | -16.4% | -2.0% | 8.53 | 15.34 | 3,276,890 | 5,295,102 | 12,625 |
| Terna Spa | 4.90 | 1.4% | 4.5% | 15.6% | 22.0% | 3.0% | 3.88 | 4.97 | 7,293,807 | 7,896,426 | 9,849 |
| TotS Spa | 66.15 | -9.8% | -5.1% | -17.3% | -22.9% | -9.4% | 65.10 | 98.00 | 191,948 | 126,641 | 2,189 |
| Ubi Banca Spa | 3.84 | -5.5% | 14.4% | -42.8% | -44.3% | -38.1% | 2.82 | 7.88 | 10,354,350 | 12,050,180 | 3,459 |
| Unicredit Spa | 3.68 | -9.0% | 11.3% | -35.5% | -39.4% | -28.3% | 2.77 | 6.61 | 98,454,530 | 98,938,860 | 22,046 |
| Unico Gruppo Finanziario So | 3.69 | 2.7% | 13.7% | -12.1% | -18.1% | -22.5% | 2.84 | 5.45 | 3,883,676 | 4,416,186 | 2,647 |
| UnipolSa Spa | 2.03 | 0.2% | 9.9% | 2.9% | -23.1% | -14.2% | 1.55 | 2.80 | 12,910,210 | 12,902,070 | 5,733 |
| Yoco - Nex-A-Power Group | 25.60 | 0.6% | -4.9% | -6.4% | 16.3% | -25.9% | 20.63 | 36.78 | 869,761 | 728,461 | 3,331 |

** For FTSE MIB stocks, market cap here reported on overall shares outstanding