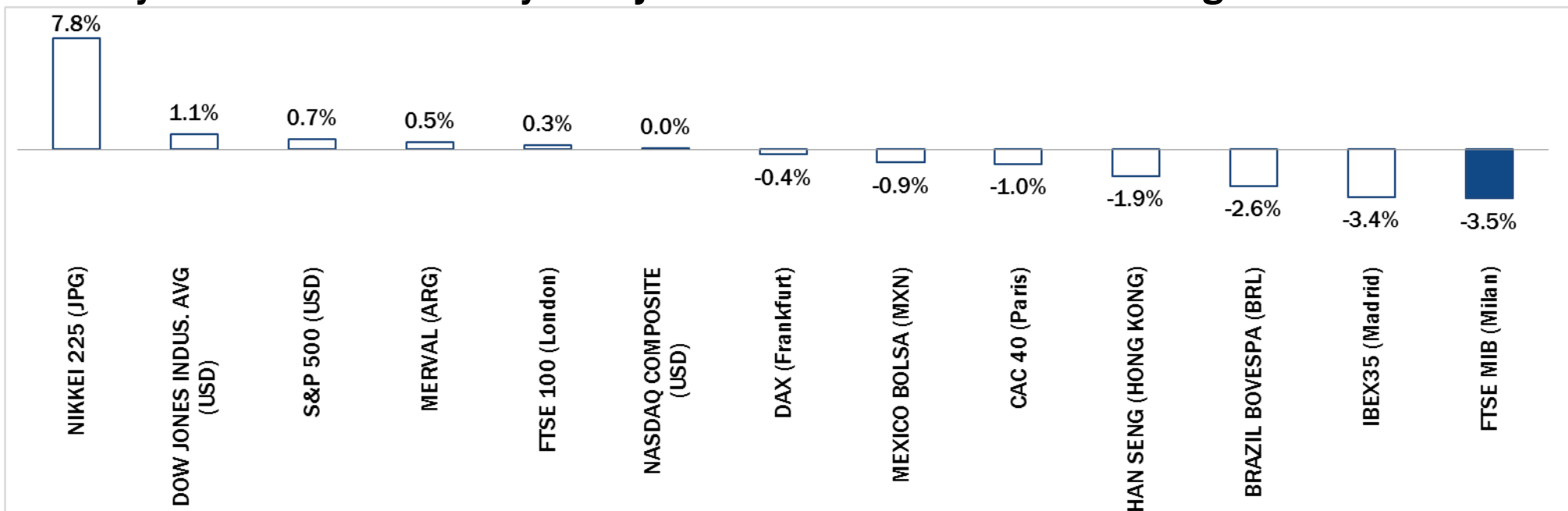


Weekly Stock Market Report for Telecom Italia Retail Shareholders

November 3rd – November 7th, 2014

Weekly Performance Summary of Major Worldwide Market Stock Exchanges



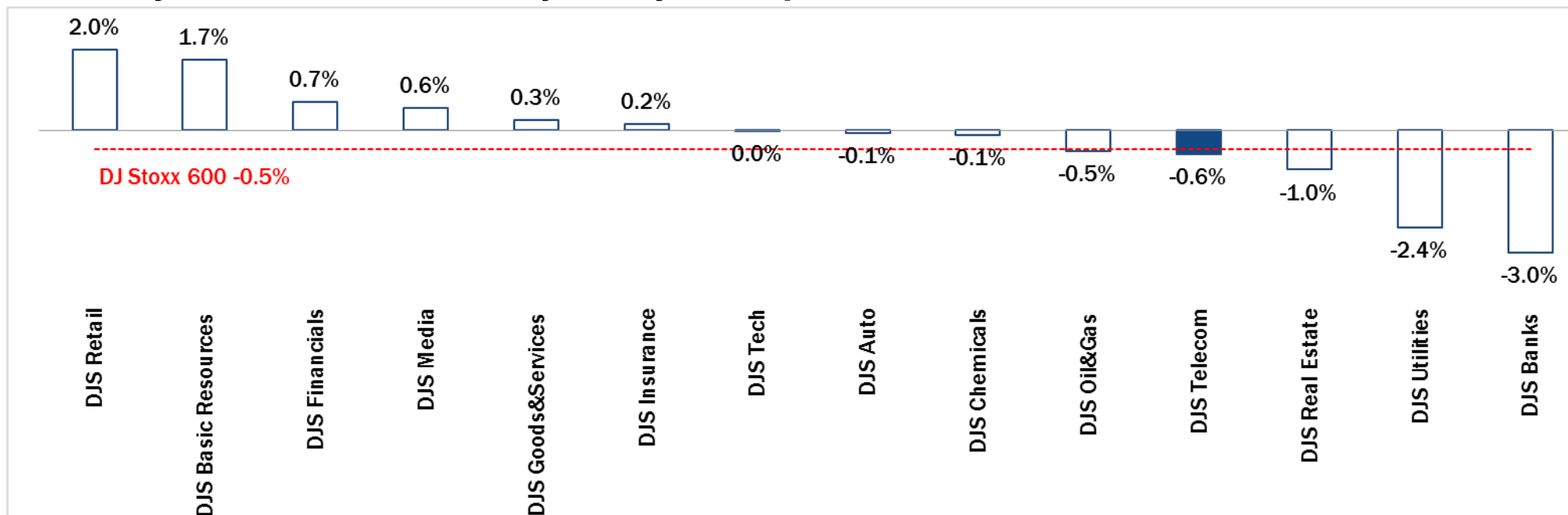
	Index Point as of 07-Nov-14	Performance (Δ%)*					Last 52 weeks		Daily average volume **		Market Cap. (mln. local cur.)
		1 week	1 month	6 months	1 year	from Jan. '14	Low Price	High Price	1 week	1 month	
Europe											
FTSE MIB (Milan)	19,095	-3.5%	-0.6%	-10.7%	0.7%	0.7%	17,556	22,590	949,215,270	900,274,337	392,705
FTSE 100 (London)	6,567	0.3%	3.6%	-3.6%	-2.1%	-2.7%	6,073	6,905	798,549,568	881,855,712	1,796,064
DAX (Frankfurt)	9,292	-0.4%	5.7%	-3.0%	2.4%	-2.7%	8,355	10,051	95,923,539	112,072,318	915,220
CAC 40 (Paris)	4,190	-1.0%	2.9%	-6.4%	-1.7%	-2.5%	3,789	4,599	140,079,102	157,901,984	1,128,444
IBEX35 (Madrid)	10,126	-3.4%	-0.2%	-3.4%	3.9%	2.1%	9,232	11,249	439,092,672	484,872,937	532,360
America											
DOW JONES INDUS. AVG (USD)	17,574	1.1%	6.2%	6.0%	11.5%	6.0%	15,341	17,575	78,213,320	95,947,659	5,001,792
S&P 500 (USD)	2,032	0.7%	6.6%	8.2%	14.8%	9.9%	1,738	2,034	507,391,757	584,669,758	18,547,890
NASDAQ COMPOSITE (USD)	4,633	0.0%	8.3%	13.8%	18.2%	10.9%	3,869	4,654	499,982,042	552,161,392	7,014,571
MEXICO BOLSA (MXN)	44,615	-0.9%	2.7%	7.1%	11.9%	4.4%	37,752	46,554	145,539,824	188,140,960	2,227,081
MERVAL (ARG)	10,589	0.5%	5.5%	54.7%	100.0%	96.4%	5,105	12,599	9,892,076	13,109,739	10,588
BRAZIL BOVESPA (BRL)	53,223	-2.6%	-3.8%	0.2%	1.9%	3.3%	44,905	62,305	349,459,917	490,400,864	1,749,114
Asia											
NIKKEI 225 (JPG)	16,880	7.8%	10.3%	18.9%	19.8%	3.6%	13,885	17,128	2,377,334,656	1,631,046,950	314,990,688
HAN SENG (HONG KONG)	23,550	-1.9%	2.0%	7.7%	3.5%	1.0%	21,138	25,363	1,333,849,651	1,546,292,188	14,450,946

* performance calculated on closing price

Source: Bloomberg LP

** n. of traded shares

Weekly Performance Summary of Major European Sectors



Index	Index Point as of 07-Nov-14	Performance (Δ %)*					Last 52 weeks		Daily average volume **		Market Cap. (mln. local cur.)
		1 week	1 month	6 months	1 year	from Jan. '14	Low Price	High Price	1 week	1 month	
DJ Stoxx 600	335.25	-0.5%	4.2%	-1.0%	3.9%	2.1%	302.48	350.85	3,335,048,192	3,554,228,881	8,548,485.00

Sectors

Sector	Index Point	1 week	1 month	6 months	1 year	from Jan. '14	Low Price	High Price	Daily average volume 1 week	Daily average volume 1 month	Market Cap. (mln. local cur.)
DJS Telecom	301.9	-0.6%	6.2%	-1.4%	3.3%	1.4%	265.32	310.37	301,410,163	327,221,409	423,441.47
DJS Auto	462.05	-0.1%	10.0%	-7.8%	0.1%	-4.1%	407.83	536.66	37,631,606	51,370,138	260,634.59
DJS Banks	188.67	-3.0%	-0.2%	-5.0%	-1.2%	-2.9%	173.86	209.5	1,637,246,899	1,760,304,964	1,167,859.50
DJS Basic Resources	394.85	1.7%	4.4%	-4.1%	-5.3%	-1.5%	369.17	455.43	101,504,146	106,758,034	283,794.94
DJS Chemicals	754.53	-0.1%	6.4%	-1.3%	3.8%	-0.4%	677.03	793.87	19,072,140	21,630,007	364,418.72
DJS Oil&Gas	317.66	-0.5%	2.0%	-12.6%	-4.9%	-5.2%	287.36	381.9	183,266,915	173,734,013	607,953.75
DJS Financials	356.49	0.7%	9.6%	1.7%	11.1%	3.8%	307.16	368.62	31,791,417	37,260,725	148,640.78
DJS Goods&Services	395.89	0.3%	6.7%	-3.5%	-1.9%	-4.3%	351.98	425.9	178,395,968	188,803,925	883,101.69
DJS Insurance	239.77	0.2%	4.7%	5.7%	9.7%	5.1%	210.78	245	112,057,518	122,194,214	480,822.16
DJS Media	254.15	0.6%	6.5%	4.0%	1.8%	0.1%	226.72	260.77	50,413,910	61,927,166	230,120.72
DJS Tech	286.08	0.0%	4.3%	5.2%	2.9%	-1.5%	260.2	305.74	90,280,606	108,143,862	259,378.97
DJS Utilities	312.79	-2.4%	2.2%	1.6%	11.6%	12.4%	265.76	328.18	202,735,613	188,659,145	445,692.59
DJS Retail	291.47	2.0%	6.3%	-7.0%	-11.0%	-10.3%	259.46	331.27	151,233,525	142,469,470	299,041.72
DJS Real Estate	155.78	-1.0%	6.6%	3.4%	13.6%	14.4%	129.71	158.46	20,111,530	22,118,598	121,762.77

* performance calculated on closing price

** n. of traded shares

Source: Bloomberg LP

NB: Weekly performances are referred to last 5 open market sessions.

Europe: Stock Performance of Main TLC Operators

Last Week Performance

Iliad	6.7%
Inmarsat	3.9%
Freenet	3.7%
Ziggo	2.6%
British Telecom	1.6%
Tele2	1.2%
Vivendi	0.8%
OTE	0.6%
Telekom Austria	0.3%
Jazztel	0.3%
Deutsche Telekom	0.2%
Vodafone Group	-0.2%
Teliasonera	-0.2%
Elisa	-0.3%
DJStoxx Telecom	-0.6%
TEF Deutschland	-0.9%
Telenor	-1.5%
TDC	-1.5%
Telefonica	-1.5%
KPN	-2.0%
Talk Talk	-2.2%
Belgacom	-2.4%
Orange	-2.8%
Swisscom	-3.4%
Telecom Italia Sav.	-3.6%
Telecom Italia Ord.	-4.2%
Portugal Telecom	-6.9%
C&W Comm.	-7.2%

2014 Year-To-Date Performance

Jazztel	64.2%
Orange	37.4%
Belgacom	36.7%
Tele2	30.1%
Iliad	25.1%
Telecom Italia Sav.	24.9%
Ziggo	20.5%
Telecom Italia Ord.	19.9%
Swisscom	16.2%
Elisa	13.3%
KPN	9.4%
Telekom Austria	9.0%
Vivendi	8.1%
Telenor	3.3%
DJStoxx Telecom	1.4%
Telefonica	-0.2%
Freenet	-0.5%
British Telecom	-1.6%
Deutsche Telekom	-3.1%
Talk Talk	-4.1%
Teliasonera	-4.9%
Inmarsat	-5.8%
OTE	-6.3%
TEF Deutschland	-11.4%
Vodafone Group	-14.1%
TDC	-15.1%
C&W Comm.	-20.4%
Portugal Telecom	-61.5%

Last 1 Year Performance

Jazztel	59.1%
Belgacom	42.9%
Telecom Italia Sav.	29.2%
Orange	27.6%
Telecom Italia Ord.	27.1%
Ziggo	27.0%
Tele2	21.5%
Elisa	18.7%
Talk Talk	18.1%
Swisscom	16.0%
Vivendi	11.6%
Freenet	11.1%
Iliad	10.5%
Deutsche Telekom	6.2%
Inmarsat	5.2%
KPN	3.6%
OTE	3.5%
DJStoxx Telecom	3.3%
Telenor	1.5%
British Telecom	0.4%
Telekom Austria	-4.0%
Teliasonera	-4.2%
Telefonica	-5.1%
C&W Comm.	-6.9%
TEF Deutschland	-9.1%
TDC	-9.9%
Vodafone Group	-11.0%
Portugal Telecom	-62.9%

Performance Summary of Main European TLC Operators

Cl. Price (local currency) 07-Nov-14	Performance ($\Delta\%$)*					Last 52 weeks		Daily average volume **		Market Cap. (all in €mln)
	1 week	1 month	6 months	1 year	from Jan. '14	Low Price	High Price	1 week	1 month	

EUROPE

Index

DJStoxx Telecom	301.90	-0.6%	6.2%	-1.4%	3.3%	1.4%	265.32	310.37	301,410,163	327,221,409
-----------------	--------	-------	------	-------	------	------	--------	--------	-------------	-------------

TLC Operators

Telecom Italia Ord.	0.865	-4.2%	1.5%	-8.2%	27.1%	19.9%	0.652	1.012	108,902,000	114,801,300	11,646
Telecom Italia Sav.	0.688	-3.6%	2.0%	-4.4%	29.2%	24.9%	0.499	0.792	12,868,780	15,775,570	4,143
Altice	50.54	1.7%	18.8%	16.5%	n.a.	n.a.	25.505	57.010	149,089	121,046	12,520
Belgacom	29.40	-2.4%	6.2%	29.9%	42.9%	36.7%	19.975	30.825	1,105,632	998,628	9,936
British Telecom	373.50	1.6%	0.3%	-3.6%	0.4%	-1.6%	350.300	421.200	20,774,930	16,359,980	38,779
C&W Comm.	44.75	-7.2%	-0.1%	-18.6%	-6.9%	-20.4%	42.910	58.500	8,230,192	8,114,994	1,442
Deutsche Telekom	12.05	0.2%	6.9%	-3.6%	6.2%	-3.1%	10.065	13.150	11,642,260	14,406,260	54,631
Elisa	21.83	-0.3%	13.2%	-1.0%	18.7%	13.3%	17.580	22.850	386,254	584,196	3,653
Freenet	21.67	3.7%	11.8%	-6.9%	11.1%	-0.5%	17.695	25.960	578,308	533,211	2,774
Orange	12.37	-2.8%	12.0%	1.4%	27.6%	37.4%	8.388	12.860	9,052,765	11,451,210	32,753
OTE	9.06	0.6%	-14.0%	-15.8%	3.5%	-6.3%	8.490	13.200	656,315	1,063,962	4,441
Iliad	186.20	6.7%	19.6%	-8.7%	10.5%	25.1%	144.850	247.400	118,228	136,426	10,871
Inmarsat	712.00	3.9%	1.5%	-2.1%	5.2%	-5.8%	653.000	774.500	845,877	734,256	4,069
Jazztel	12.78	0.3%	0.1%	13.9%	59.1%	64.2%	7.210	12.860	2,822,809	4,767,283	3,275
KPN	2.56	-2.0%	6.7%	-0.3%	3.6%	9.4%	2.133	2.805	14,052,510	16,598,170	10,949
TEF Deutschland	3.89	-0.9%	-3.6%	-11.0%	-9.1%	-11.4%	3.466	5.052	2,423,358	3,513,491	11,556
Portugal Telecom	1.22	-6.9%	-25.2%	-60.1%	-62.9%	-61.5%	0.865	3.639	15,230,200	15,127,810	1,091
Swisscom	547.00	-3.4%	0.6%	4.3%	16.0%	16.2%	447.600	575.000	153,112	126,032	23,539
Talk Talk	293.50	-2.2%	9.1%	1.2%	18.1%	-4.1%	245.000	334.300	1,454,161	1,963,457	3,572
TDC	44.64	-1.5%	2.6%	-12.9%	-9.9%	-15.1%	40.400	57.700	2,691,720	2,354,391	4,873
Telefonica	11.81	-1.5%	-0.9%	-1.9%	-5.1%	-0.2%	10.760	12.935	25,508,430	27,442,020	53,748
Telenor	149.40	-1.5%	10.0%	3.0%	1.5%	3.3%	123.900	154.900	1,985,785	1,996,711	26,429
Tele2	94.80	1.2%	10.3%	11.3%	21.5%	30.1%	68.750	96.450	2,261,859	2,568,660	4,578
Telekom Austria	6.00	0.3%	-15.9%	-15.6%	-4.0%	9.0%	5.310	7.595	612,246	712,741	2,658
Teliasonera	50.95	-0.2%	6.9%	5.1%	-4.2%	-4.9%	43.980	54.900	12,182,730	12,368,440	23,913
Vivendi	19.63	0.8%	6.4%	8.5%	11.6%	8.1%	16.446	20.290	5,386,706	5,734,864	26,465
Vodafone Group	206.95	-0.2%	1.3%	-8.8%	-11.0%	-14.1%	179.100	252.300	72,053,280	83,737,850	69,913
Ziggo	40.00	2.6%	8.8%	21.0%	27.0%	20.5%	30.500	40.110	873,032	493,379	8,000

* performance calculated on closing price ** n. of traded shares

Source: Bloomberg LP

Brazil: Stock Performance of Main TLC Operators

Last Week Performance

Embratel PN	2.7%
NET Servicos PN	2.1%
Argentinean Equity - Merval Index	0.5%
Embratel ON	0.0%
America Movil	-0.7%
TIM Participações	-1.5%
Brazilian Equity - Bovespa Index	-2.6%
Telefonica Brasil PN	-3.2%
Telefonica Brasil ON	-3.2%
Oi ON	-5.8%
Oi PN	-7.7%
Telecom Argentina - ADR	-8.2%
Telecom Argentina - "B shares"	-8.3%

2014 Year-To-Date Performance

Embratel PN	119.7%
NET Servicos PN	115.0%
Embratel ON	114.4%
Argentinean Equity - Merval Index	96.4%
Telecom Argentina - "B shares"	77.4%
Telecom Argentina - ADR	22.9%
Telefonica Brasil PN	9.3%
TIM Participações	7.6%
America Movil	7.2%
Telefonica Brasil ON	3.8%
Brazilian Equity - Bovespa Index	3.3%
Oi ON	-64.3%
Oi PN	-66.6%

Last 1 Year Performance

Embratel PN	160.3%
Embratel ON	153.4%
Argentinean Equity - Merval Index	100.0%
NET Servicos PN	63.1%
Telecom Argentina - "B shares"	50.5%
TIM Participações	24.8%
America Movil	18.3%
Telefonica Brasil PN	7.5%
Telecom Argentina - ADR	5.7%
Telefonica Brasil ON	2.8%
Brazilian Equity - Bovespa Index	1.9%
Oi ON	-65.8%
Oi PN	-66.2%

Performance Summary of Main LatAm TLC Operators

Cl. Price 07-Nov-14	Performance ($\Delta\%$)*					Last 52 weeks		Daily average volume **		Market Cap. (mln)***
	1 week	1 month	6 months	1 year	from Jan. '14	Low Price	High Price	1 week	1 month	

BRAZIL

Index

Brazilian Equity - Bovespa Index	R\$ 53,222.85	-2.6%	-3.8%	0.2%	1.9%	3.3%	44,904.83	62,304.88	349,459,917	490,400,864	R\$ 1,749,114
----------------------------------	---------------	-------	-------	------	------	------	-----------	-----------	-------------	-------------	---------------

Peers

TIM Participações	R\$ 13.27	-1.5%	9.9%	6.5%	24.8%	7.6%	R\$ 10.19	R\$ 14.57	4,548,340	5,100,854	R\$ 32,127
-------------------	-----------	-------	------	------	-------	------	-----------	-----------	-----------	-----------	------------

Oi ON	R\$ 1.29	-5.8%	-19.4%	-45.3%	-65.8%	-64.3%	R\$ 1.08	R\$ 4.89	3,531,080	6,145,387	R\$ 3,691
Oi PN	R\$ 1.20	-7.7%	-21.1%	-45.9%	-66.2%	-66.6%	R\$ 1.02	R\$ 4.62	36,969,800	45,347,400	R\$ 6,868
Telefonica Brasil ON	R\$ 41.53	-3.2%	2.6%	1.5%	2.8%	3.8%	R\$ 36.49	R\$ 43.80	8,740	36,093	R\$ 15,847
Telefonica Brasil PN	R\$ 49.00	-3.2%	0.5%	5.2%	7.5%	9.3%	R\$ 41.66	R\$ 52.38	666,180	1,097,423	R\$ 36,457
Embratel ON	R\$ 17.99	0.0%	-10.1%	18.0%	153.4%	114.4%	R\$ 6.76	R\$ 23.88	0	1,263	R\$ 11,482
Embratel PN	R\$ 19.00	2.7%	4.4%	26.7%	160.3%	119.7%	R\$ 7.00	R\$ 23.50	820	1,147	R\$ 11,270
NET Servicos PN	R\$ 48.00	2.1%	9.1%	41.2%	63.1%	115.0%	R\$ 18.98	R\$ 63.85	220	2,860	R\$ 11,984

ARGENTINA

Index

Argentinean Equity - Merval Index	10,588.61	0.5%	5.5%	54.7%	100.0%	96.4%	5,105.48	12,599.42	220	2,860	ARS 1,157,051
-----------------------------------	-----------	------	------	-------	--------	-------	----------	-----------	-----	-------	---------------

Integrated

Telecom Argentina - "B shares"	ARS 55.00	-8.3%	-0.5%	38.5%	50.5%	77.4%	ARS 27.40	ARS 65.00	204,865	98,918	ARS 54,141
Telecom Argentina - ADR	\$21.18	-8.2%	7.9%	2.8%	5.7%	22.9%	\$13.93	\$25.56	175,998	118,043	\$4,170

Nortel Inversora B shares - ADR	\$23.28	0.2%	4.9%	9.8%	8.3%	17.0%	\$15.84	\$26.37	1,545	6,145	\$3,166
---------------------------------	---------	------	------	------	------	-------	---------	---------	-------	-------	---------

MEXICO

Index

Mexican Equity - Mexbol Index	44,614.66	-0.9%	2.7%	7.1%	11.9%	4.4%	37,751.64	46,554.28	145,539,824	188,140,960	MXN 4,962,544
-------------------------------	-----------	-------	------	------	-------	------	-----------	-----------	-------------	-------------	---------------

Mobile/Integrated

America Movil	MXN 16.32	-0.7%	-1.9%	24.9%	18.3%	7.2%	MXN 12.39	MXN 17.64	54,348,990	54,724,450	MXN 1,120,908
---------------	-----------	-------	-------	-------	-------	------	-----------	-----------	------------	------------	---------------

TV

Grupo Televisa	MXN 95.04	-2.3%	1.8%	11.2%	25.6%	20.8%	MXN 73.20	MXN 99.21	2,283,820	2,998,561	MXN 274,865
----------------	-----------	-------	------	-------	-------	-------	-----------	-----------	-----------	-----------	-------------

* performance calculated on closing price ** n. of traded shares *** For Telecom Argentina, reported market capitalization represents estimated market capitalization of all Classes of Shares (A,B,C - of which only Class B is listed)



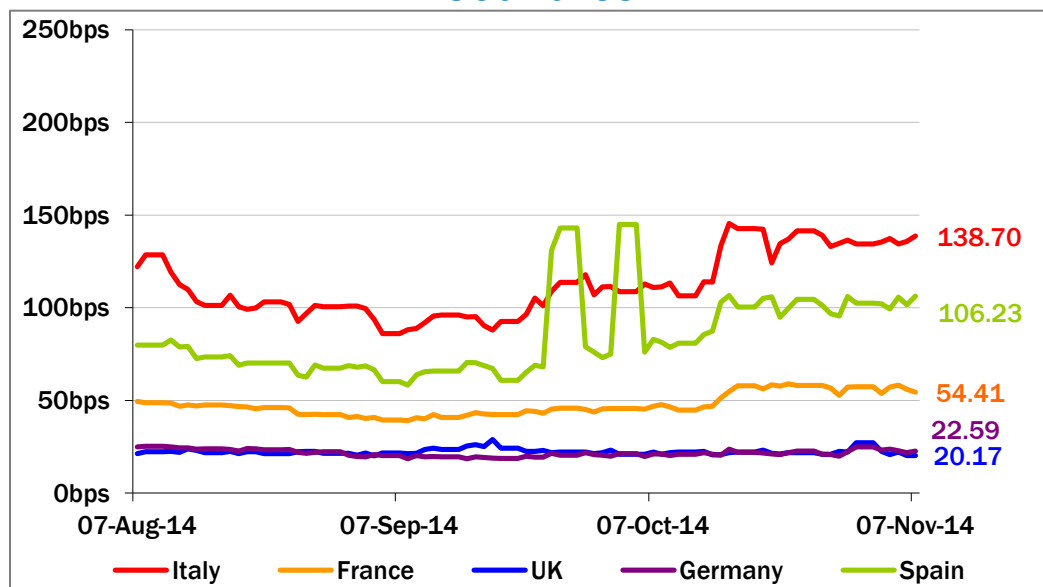
European Telecoms Sector: Credit Outlook

Long-term Credit Ratings

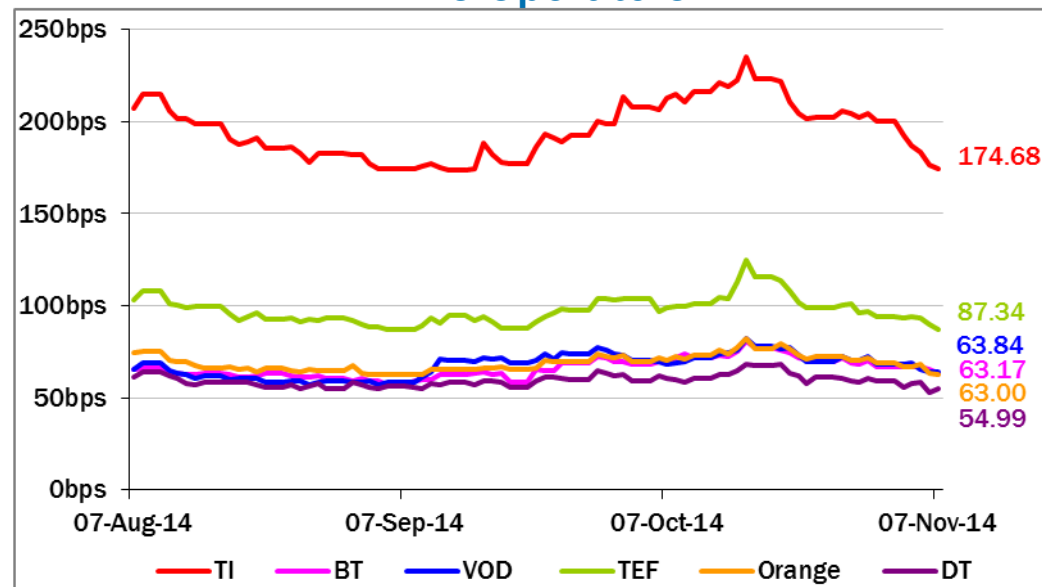
	Moody's		S&P		Fitch	
	rating	outlook	rating	outlook	rating	outlook
TELECOM ITALIA	Ba1	NEG	BB+	NEG	BBB-	NEG
BELGACOM	A1	STABLE	A	STABLE	n.a.	n.a.
BT GROUP	Baa2	POS	BBB	STABLE	BBB	POS
DEUTSCHE TELEKOM	Baa1	STABLE	BBB+	STABLE	BBB+	STABLE
ORANGE	Baa1	STABLE	BBB+	NEG	BBB+	NEG
KPN	Baa3	STABLE	BBB-	STABLE	BBB-	STABLE
OI GROUP	Ba1	NEG	BB+	STABLE	BB+	STABLE
SWISSCOM	A2	STABLE	A	STABLE	n.a.	n.a.
TELEFONICA	Baa2	NEG	BBB	STABLE	BBB+	NEG
TELEKOM AUSTRIA	Baa2	STABLE	BBB	STABLE	n.a.	n.a.
TELIASONERA	A3	NEG	A-	STABLE	A-	STABLE
TELENOR	A3	STABLE	A-	POS	n.a.	n.a.
VODAFONE GROUP	Baa1	STABLE	A-	NEG	BBB+	STABLE
WIND TELECOMUNICAZIONI	B2	STABLE	BB-	STABLE	B+	STABLE
VIMPELCOM	Ba3	STABLE	BB	POS	n.a.	n.a.

5 Years CDS levels

Countries



TLC Operators





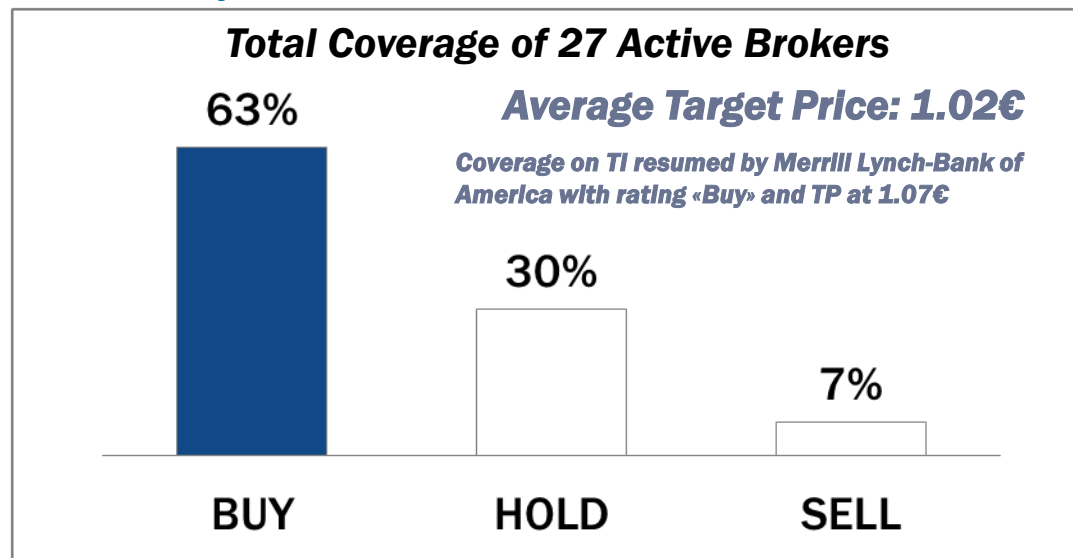
Telecom Italia Group – Weekly Performance: Price (€) and Volumes (mln)

TI Ordinary Shares

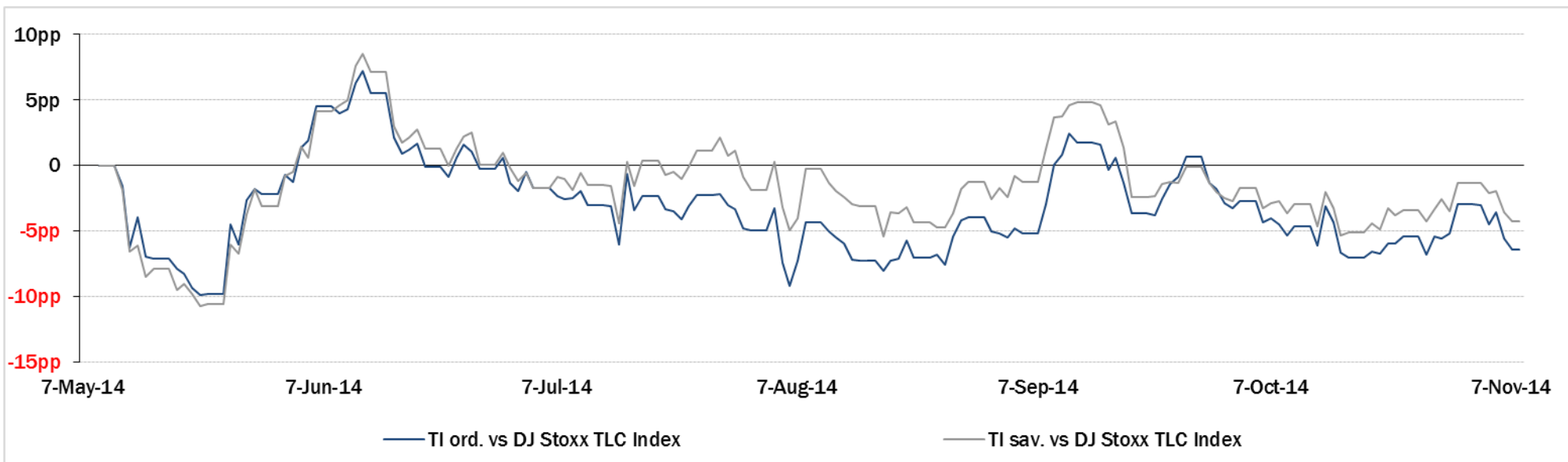
TI Saving Shares



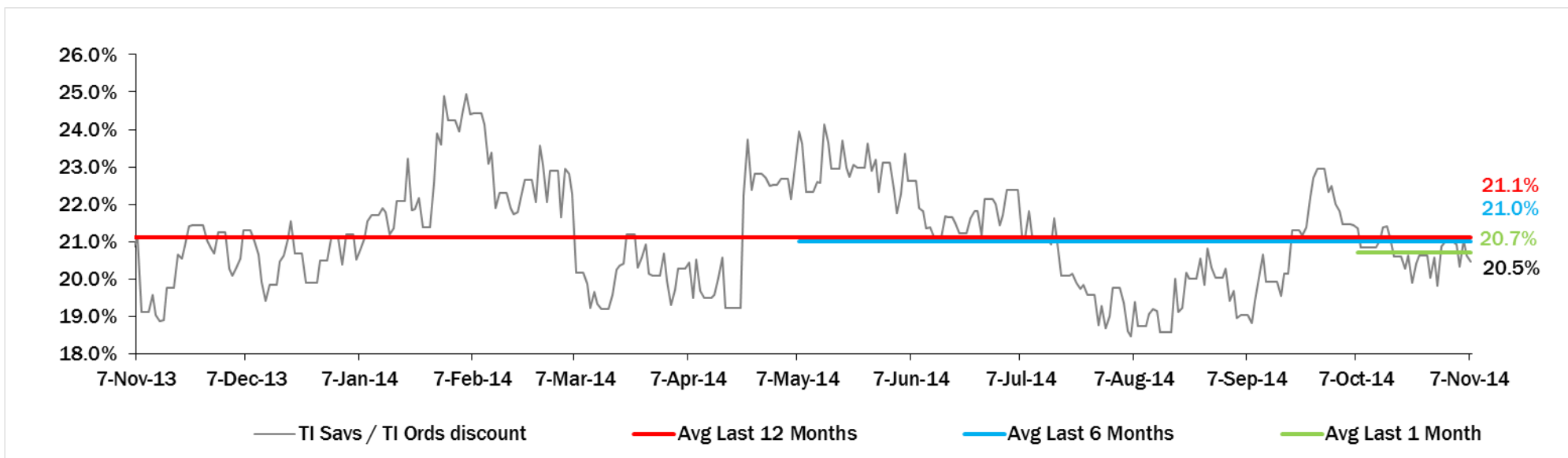
Analysts' Recommendations on TI Ords



Relative Performance Last 6 Months of Telecom Italia Shares vs TLC Sector



Evolution of the spread between Telecom Italia shares (TI Savs / TI Ords) in the last 12 months



Performance Summary of FTSE MIB



Cl. Price € 07-Nov-14	Performance (Δ%)*						Last 52 weeks		Daily average volume		Market** Cap. mil. Euro
	1 week	1 month	6 months	1 year	from Jan. '14	Low Price	High Price	1 week	1 month		
Index											
FTSE MIB (Milan)	19,095	-3.5%	-0.6%	-10.7%	0.7%	0.7%	17,556	22,590	949,215,270	900,274,337	392,705
FTSE Italia All-Share (Milan)	20,163	-3.3%	-0.5%	-11.5%	0.1%	-0.2%	18,587	23,913	1,187,675,661	1,166,988,529	470,964

Stocks FTSE MIB

A2A SPA	0.78	-2.6%	4.2%	-11.4%	-8.4%	-8.6%	0.68	1.03	16,163,780	18,419,470	2,436
AUTOGRILL SPA	5.16	-4.5%	-7.5%	-21.7%	-20.1%	-16.0%	4.87	7.77	2,725,663	2,486,989	1,311
ATLANTIA SPA	18.42	-2.0%	1.2%	-0.2%	14.7%	12.9%	15.34	21.50	2,027,522	2,924,823	15,211
AZIMUT HOLDING SPA	18.27	-2.0%	-2.3%	-14.4%	-0.4%	-4.9%	16.02	25.92	1,176,798	1,143,338	2,617
BANCA MONTE DEI PASCHI SIENA	0.67	9.7%	-34.2%	-54.4%	-52.0%	-39.1%	0.58	2.73	201,488,900	144,537,000	3,413
BANCO POPOLARE SC	10.74	-6.9%	-4.6%	-22.7%	0.8%	1.8%	8.90	16.41	5,903,482	5,930,408	3,890
BANCA POPOL EMILIA ROMAGNA	5.55	-8.6%	-10.0%	-25.6%	-10.9%	-12.0%	5.07	8.87	7,081,818	5,107,589	2,662
BUZZI UNICEM SPA	10.80	0.3%	5.5%	-19.2%	-16.6%	-17.6%	9.45	15.20	1,049,075	1,297,360	2,055
CNH INDUSTRIAL NV	6.50	-0.1%	7.0%	-21.3%	-22.6%	-21.6%	5.83	8.87	6,221,292	7,676,261	8,790
DAVIDE CAMPARI-MILANO SPA	5.57	-3.0%	1.5%	-11.0%	-12.3%	-8.5%	5.04	6.48	1,381,711	1,460,588	3,232
ENEL GREEN POWER SPA	1.89	-3.4%	1.2%	-13.1%	5.6%	3.3%	1.65	2.19	9,667,878	10,209,540	9,460
ENEL SPA	3.82	-6.0%	-1.8%	-9.3%	17.9%	20.5%	2.98	4.49	51,701,580	50,257,730	35,958
ENI SPA	16.41	-3.5%	-4.2%	-13.8%	-8.7%	-6.2%	15.31	20.46	17,546,190	21,013,650	59,637
EXOR SPA	32.91	-5.3%	16.3%	3.4%	15.4%	13.8%	26.62	35.08	710,371	634,730	8,103
FIAT CHRYSLER AUTOMOBILES NV	8.77	-1.5%	n.a.	n.a.	n.a.	n.a.	6.57	9.10	13,915,600	n.a.	10,578
FINMECCANICA SPA	7.48	4.0%	6.0%	21.4%	46.4%	35.8%	4.85	7.89	6,495,436	5,578,463	4,322
ASSICURAZIONI GENERALI	16.30	-0.2%	2.1%	-2.6%	-3.0%	-4.7%	14.40	17.70	7,213,507	8,891,345	25,377
GTech SPA	17.80	-4.1%	-3.8%	-18.0%	-21.4%	-19.7%	15.24	24.13	437,630	760,632	3,115
INTESA SANPAOLO	2.21	-5.5%	-2.9%	-9.9%	25.6%	23.2%	1.63	2.66	191,032,400	191,315,000	36,113
LUXOTTICA GROUP SPA	40.18	-1.1%	-1.4%	-0.5%	1.7%	3.2%	34.74	43.30	748,128	1,317,371	19,343
MEDIOBANCA SPA	6.84	-2.6%	2.9%	-10.2%	9.2%	7.5%	5.74	8.49	5,978,181	6,333,911	5,888
MEDIOLANUM SPA	5.38	0.2%	1.2%	-17.8%	-14.7%	-14.7%	4.75	7.19	2,209,561	2,767,202	3,961
MONCLER SPA	10.56	-4.5%	-5.6%	-16.8%	n.a.	-33.2%	10.01	16.60	1,188,885	906,679	2,640
MEDIASET SPA	2.61	-1.9%	-7.0%	-33.8%	-31.4%	-24.1%	2.42	4.45	7,151,814	11,189,550	3,088
PIRELLI & C.	10.67	-0.1%	4.3%	-11.5%	-3.4%	-15.2%	9.61	12.99	2,880,538	3,327,733	5,197
BANCA POPOLARE DI MILANO	0.55	-7.4%	-14.2%	-13.4%	36.3%	38.1%	0.36	0.74	98,758,790	97,662,150	2,435
PRYSMIAN SPA	14.61	5.9%	4.4%	-14.1%	-21.8%	-21.9%	12.34	19.79	1,735,235	1,629,862	3,156
SALVATORE FERRAGAMO SPA	18.38	-2.4%	-11.8%	-20.2%	-26.9%	-33.5%	17.61	29.85	600,957	694,836	3,095
SAIPEM SPA	12.72	1.8%	-19.1%	-36.3%	-29.0%	-18.3%	11.51	21.00	5,842,766	4,316,726	5,615
SNAM SPA	3.99	-7.4%	-4.3%	-9.5%	4.9%	-1.8%	3.71	4.58	32,680,130	16,953,090	13,500
STMICROELECTRONICS NV	5.50	3.3%	-6.9%	-21.4%	-1.4%	-4.8%	4.89	7.42	5,929,242	7,254,721	5,009
TENARIS SA	15.00	-4.5%	-7.1%	-8.0%	-12.1%	-5.5%	14.65	18.29	3,637,805	3,204,002	17,708
TELECOM ITALIA SPA	0.8645	-4.2%	1.5%	-8.2%	27.1%	19.9%	0.65	1.01	108,902,000	114,801,300	15,789
TOD'S SPA	70.00	-4.7%	-6.8%	-31.4%	-43.6%	-42.3%	66.50	127.60	162,757	169,529	2,143
TERNA SPA	3.78	-6.0%	-1.9%	-4.0%	2.7%	4.0%	3.42	4.14	18,724,920	11,669,280	7,594
UBI BANCA SCPA	5.72	-8.4%	-9.3%	-15.7%	17.0%	15.9%	4.58	7.55	12,849,950	11,640,130	5,158
UNICREDIT SPA	5.50	-4.5%	-7.7%	-14.2%	1.9%	2.2%	5.01	6.89	85,785,860	91,646,950	32,268
UNIPOLSAI SPA	2.04	-4.9%	-4.0%	-18.2%	15.5%	-8.1%	1.72	2.72	5,847,253	7,169,092	5,687
WORLD DUTY FREE SPA	6.70	-0.8%	-7.5%	-30.2%	-15.2%	-26.7%	6.05	11.07	1,777,357	3,853,934	1,705
YOOX SPA	15.22	3.3%	-8.0%	-34.4%	-46.4%	-53.3%	13.87	35.09	1,882,428	1,437,885	909

** for FTSE MIB stocks, market cap here reported on overall shares outstanding

Source: Bloomberg LP