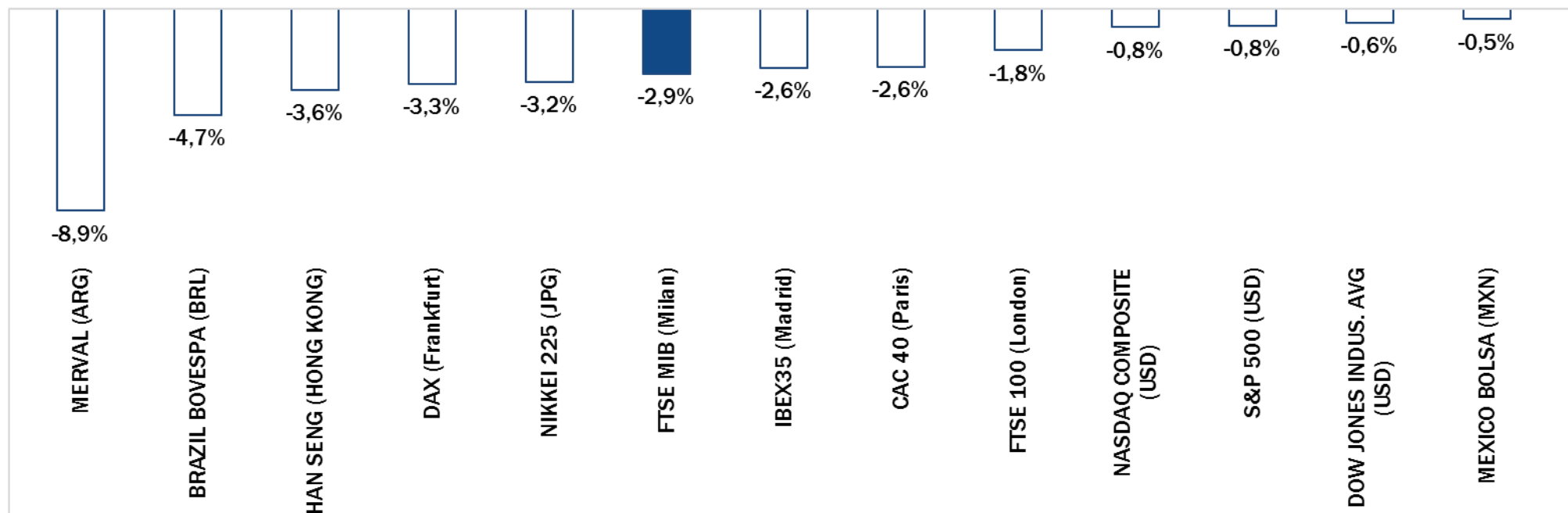


Weekly Stock Market Report for Telecom Italia Retail Shareholders

September 29nd – October 3rd, 2014

Weekly Performance Summary of Major Worldwide Market Stock Exchanges



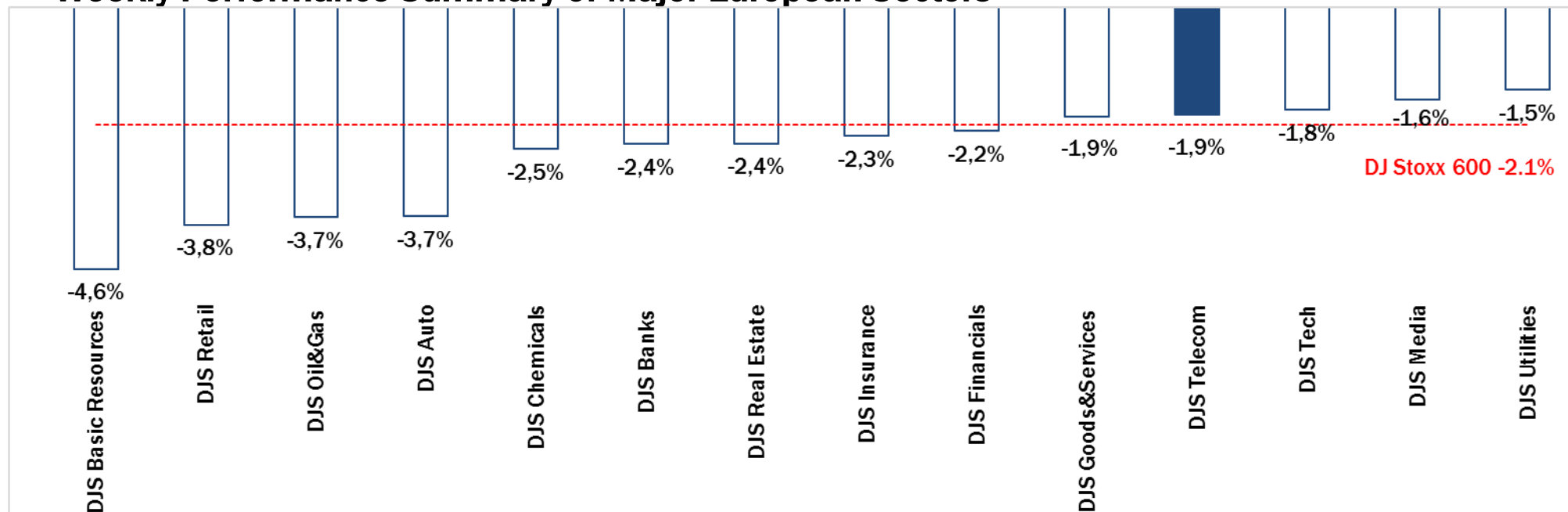
Index Point as of 03-Oct-14	Performance (Δ%)*					Last 52 weeks		Daily average volume **		Market Cap. (mln. local cur.)	
	1 week	1 month	6 months	1 year	from Jan. '14	Low Price	High Price	1 week	1 month		
Europe											
FTSE MIB (Milan)	20,201	-2.9%	-5.6%	-8.9%	10.4%	6.5%	17,749	22,590	675,009,894	632,270,210	415,037
FTSE 100 (London)	6,528	-1.8%	-4.8%	-2.5%	1.1%	-3.3%	6,317	6,905	783,409,472	682,880,811	1,783,501
DAX (Frankfurt)	9,196	-3.3%	-4.5%	-4.5%	7.0%	-3.7%	8,490	10,051	91,337,158	77,461,120	904,665
CAC 40 (Paris)	4,282	-2.6%	-4.6%	-4.5%	2.8%	-0.3%	4,051	4,599	127,133,442	103,695,999	1,152,139
IBEX35 (Madrid)	10,568	-2.6%	-5.2%	-1.0%	12.2%	6.6%	9,232	11,249	398,641,459	321,186,084	553,623
America											
DOW JONES INDUS. AVG (USD)	17,010	-0.6%	-0.7%	3.6%	12.9%	2.6%	14,719	17,351	88,043,722	83,535,126	4,911,447
S&P 500 (USD)	1,968	-0.8%	-2.0%	5.5%	16.4%	6.5%	1,646	2,019	531,165,286	475,770,455	18,032,240
NASDAQ COMPOSITE (USD)	4,476	-0.8%	-2.3%	8.4%	17.5%	7.2%	3,650	4,611	517,170,048	459,708,342	6,758,333
MEXICO BOLSA (MXN)	44,678	-0.5%	-3.4%	10.0%	9.2%	4.6%	37,752	46,554	183,036,787	178,514,365	2,232,269
Merval (ARG)	11,419	-8.9%	9.6%	78.8%	135.2%	111.8%	4,832	12,599	20,404,806	17,395,953	11,418
Brazil Bovespa (BRL)	54,540	-4.7%	-10.1%	6.8%	3.2%	5.9%	44,905	62,305	460,443,117	393,619,113	1,806,758
Asia											
NIKKEI 225 (JPG)	15,709	-3.2%	0.3%	4.3%	12.0%	-3.6%	13,749	16,374	1,425,086,822	1,227,722,581	295,008,000
HAN SENG (HONG KONG)	23,065	-3.6%	-8.6%	2.5%	-0.3%	-1.0%	21,138	25,363	1,982,502,963	1,633,864,951	14,128,725

* performance calculated on closing price

** n. of traded shares

Source: Bloomberg LP

Weekly Performance Summary of Major European Sectors



Index	Index Point as of 03-Oct-14	Performance (Δ%)*					Last 52 weeks		Daily average volume **		Market Cap. (mln. local cur.)
		1 week	1 month	6 months	1 year	from Jan. '14	Low Price	High Price	1 week	1 month	
DJ Stoxx 600	335.19	-2.1%	-3.6%	-1.2%	8.2%	2.1%	304.45	350.85	2,863,108,454	2,647,068,800	8,567,416.00
Sectors											
DJ Telecom	295.96	-1.9%	-1.2%	0.6%	5.7%	-0.6%	276.15	310.37	255,554,227	268,573,553	411,129.81
DJ Auto	443.89	-3.7%	-10.4%	-17.1%	0.7%	-7.9%	433.17	536.66	50,025,891	36,325,931	251,422.56
DJ Banks	196.61	-2.4%	-3.1%	-4.9%	4.9%	1.2%	181.84	209.5	1,343,265,408	1,281,453,035	1,218,007.50
DJ Basic Resources	388.26	-4.6%	-9.8%	-7.2%	0.3%	-3.1%	369.17	455.43	89,409,590	80,759,065	282,015.75
DJ Chemicals	736.42	-2.5%	-4.2%	-2.1%	5.7%	-2.8%	678.59	793.87	17,756,029	14,547,441	358,147.25
DJ Oil&Gas	332.65	-3.7%	-7.0%	-2.9%	3.9%	-0.7%	311.13	381.9	137,798,741	118,149,751	639,873.06
DJ Financials	339.17	-2.2%	-4.6%	-4.3%	10.1%	-1.3%	302.7	368.62	34,314,442	29,656,820	141,519.02
DJ Goods&Services	391.93	-1.9%	-5.0%	-7.3%	0.8%	-5.3%	380.82	425.9	159,658,264	137,012,615	874,471.44
DJ Insurance	235.81	-2.3%	-1.5%	2.0%	15.2%	3.3%	201.28	245	114,846,299	111,487,195	473,374.94
DJ Media	248.02	-1.6%	-3.0%	-1.1%	6.8%	-2.3%	228.93	260.77	54,498,387	48,013,573	224,276.02
DJ Tech	291.26	-1.8%	-2.7%	-0.2%	5.4%	0.3%	265.74	305.74	72,478,178	74,556,261	264,335.94
DJ Utilities	317.04	-1.5%	-3.3%	3.5%	16.4%	13.9%	265.76	328.18	164,382,544	133,204,940	472,988.47
DJ Retail	281.3	-3.8%	-8.2%	-12.1%	-11.2%	-13.5%	279.03	333.73	152,937,206	118,889,113	290,545.53
DJ Real Estate	149.16	-2.4%	-4.9%	3.0%	13.4%	9.5%	129.09	157.6	20,922,741	17,443,713	116,627.02

* performance calculated on closing price

** n. of traded shares

Source: Bloomberg LP

Europe: Stock Performance of Main TLC Operators

Last Week Performance

2014 Year-To-Date Performance

Last 1 Year Performance

Belgacom	2,3%	Jazztel	64,8%	Jazztel	58,3%
Jazztel	0,4%	Belgacom	30,3%	Belgacom	41,3%
Ziggo	0,1%	Telekom Austria	29,7%	Telecom Italia Sav.	39,9%
Telekom Austria	0,0%	Telecom Italia Sav.	25,7%	Telecom Italia Ord.	37,9%
KPN	0,0%	Orange	25,7%	OTE	27,1%
Vodafone Group	-0,5%	Telecom Italia Ord.	22,2%	Ziggo	25,1%
Swisscom	-0,6%	Tele2	17,5%	Swisscom	25,1%
TEF Deutschland	-0,8%	Swisscom	14,5%	Orange	19,4%
TDC	-1,6%	Ziggo	12,0%	C&W Comm.	16,8%
British Telecom	-1,8%	Iliad	8,2%	Talk Talk	16,2%
DJStoxx Telecom	-1,9%	OTE	7,5%	Elisa	14,7%
Orange	-2,1%	Elisa	6,2%	Vivendi	14,0%
Talk Talk	-2,2%	KPN	6,1%	Telekom Austria	12,4%
OTE	-2,2%	Vivendi	2,9%	Freenet	9,6%
Inmarsat	-2,2%	Telefonica	1,4%	British Telecom	7,4%
Vivendi	-2,4%	DJStoxx Telecom	-0,6%	KPN	5,9%
Telefonica	-2,4%	British Telecom	-0,7%	DJStoxx Telecom	5,7%
Teliasonera	-2,5%	Talk Talk	-5,0%	Tele2	5,5%
Tele2	-2,5%	Telenor	-5,1%	Deutsche Telekom	3,6%
Deutsche Telekom	-2,6%	Deutsche Telekom	-6,7%	Teliasonera	1,7%
Elisa	-3,0%	TEF Deutschland	-7,0%	Telefonica	-0,3%
C&W Comm.	-3,2%	Inmarsat	-7,8%	Inmarsat	-0,9%
Telecom Italia Sav.	-3,5%	Teliasonera	-8,3%	Telenor	-1,5%
Telenor	-4,1%	Freenet	-8,7%	TDC	-6,1%
Iliad	-4,5%	Vodafone Group	-15,4%	TEF Deutschland	-7,0%
Freenet	-4,8%	TDC	-15,8%	Iliad	-7,3%
Telecom Italia Ord.	-5,3%	C&W Comm.	-18,2%	Vodafone Group	-9,5%
Portugal Telecom	-7,9%	Portugal Telecom	-50,8%	Portugal Telecom	-55,0%

Performance Summary of Main European TLC Operators

Cl. Price (local currency) 03-Oct-14	Performance ($\Delta\%$)*					Last 52 weeks		Daily average volume **		Market Cap. (all in €mln)
	1 week	1 month	6 months	1 year	from Jan. '14	Low Price	High Price	1 week	1 month	

EUROPE

Index

DJStoxx Telecom	295.96	-1.9%	-1.2%	0.6%	5.7%	-0.6%	276.15	310.37	255,554,227	268,573,553
-----------------	--------	-------	-------	------	------	-------	--------	--------	-------------	-------------

TLC Operators

Telecom Italia Ord.	0.881	-5.3%	1.3%	0.3%	37.9%	22.2%	0.603	1.012	88,641,120	104,275,900	11,868
Telecom Italia Sav.	0.692	-3.5%	-1.7%	2.2%	39.9%	25.7%	0.465	0.792	8,539,974	15,323,680	4,170
Altice	41.76	0.5%	-10.5%	38.6%	n.a.	n.a.	25.505	57.010	80,064	85,545	10,345
Belgacom	28.03	2.3%	2.9%	22.9%	41.3%	30.3%	19.585	28.165	692,530	596,476	9,475
British Telecom	376.80	-1.8%	-3.0%	-1.2%	7.4%	-0.7%	339.100	421.200	11,841,470	15,034,230	39,158
C&W Comm.	45.99	-3.2%	-7.8%	-15.3%	16.8%	-18.2%	39.320	58.500	5,792,674	5,984,037	1,484
Deutsche Telekom	11.60	-2.6%	-1.2%	-0.6%	3.6%	-6.7%	10.910	13.150	9,360,896	9,423,932	52,590
Elisa	20.46	-3.0%	-2.6%	6.1%	14.7%	6.2%	17.580	22.850	419,467	332,588	3,424
Freenet	19.89	-4.8%	-3.4%	-23.3%	9.6%	-8.7%	17.795	25.960	415,922	424,809	2,546
Orange	11.32	-2.1%	-0.4%	4.4%	19.4%	25.7%	8.388	12.850	16,056,590	8,580,234	29,972
OTE	10.40	-2.2%	-6.4%	-13.3%	27.1%	7.5%	7.990	13.200	1,320,314	769,047	5,098
Iliad	161.05	-4.5%	-2.5%	-23.3%	-7.3%	8.2%	144.850	247.400	117,333	143,346	9,353
Inmarsat	697.00	-2.2%	-2.3%	-6.4%	-0.9%	-7.8%	636.000	774.500	601,245	677,563	3,987
Jazztel	12.82	0.4%	23.7%	15.7%	58.3%	64.8%	7.210	12.860	3,245,051	5,173,170	3,287
KPN	2.49	0.0%	-2.8%	-1.2%	5.9%	6.1%	2.180	2.805	12,026,250	10,047,540	10,612
TEF Deutschland	4.08	-0.8%	-11.1%	-4.1%	-7.0%	-7.0%	3.884	5.052	4,769,535	5,295,234	9,110
Portugal Telecom	1.56	-7.9%	-11.1%	-51.4%	-55.0%	-50.8%	1.322	3.710	5,543,545	10,151,820	1,395
Swisscom	539.00	-0.6%	1.6%	1.5%	25.1%	14.5%	427.700	548.500	82,755	82,452	23,063
Talk Talk	290.60	-2.2%	-7.2%	-8.6%	16.2%	-5.0%	243.700	334.300	1,647,320	1,061,034	3,541
TDC	44.28	-1.6%	-6.8%	-10.4%	-6.1%	-15.8%	40.400	57.700	2,358,069	3,135,468	4,830
Telefonica	12.00	-2.4%	-3.1%	2.8%	-0.3%	1.4%	10.835	13.135	30,082,940	27,590,310	54,612
Telenor	137.20	-4.1%	-4.6%	3.2%	-1.5%	-5.1%	123.900	153.800	1,574,111	1,206,259	25,226
Tele2	85.60	-2.5%	-1.0%	6.7%	5.5%	17.5%	68.750	89.850	1,597,371	1,377,490	4,191
Telekom Austria	7.14	0.0%	0.1%	2.3%	12.4%	29.7%	5.310	7.595	287,623	495,019	3,162
Teliasonera	49.11	-2.5%	-2.0%	8.6%	1.7%	-8.3%	43.980	54.900	10,582,170	7,852,420	23,364
Vivendi	18.68	-2.4%	-4.8%	-4.2%	14.0%	2.9%	16.090	20.290	5,097,168	4,449,066	25,184
Vodafone Group	203.85	-0.5%	-1.0%	-7.3%	-9.5%	-15.4%	187.350	252.300	55,011,130	55,441,190	68,936
Ziggo	37.20	0.1%	4.8%	14.0%	25.1%	12.0%	28.565	37.520	393,421	537,117	7,439

* performance calculated on closing price ** n. of traded shares

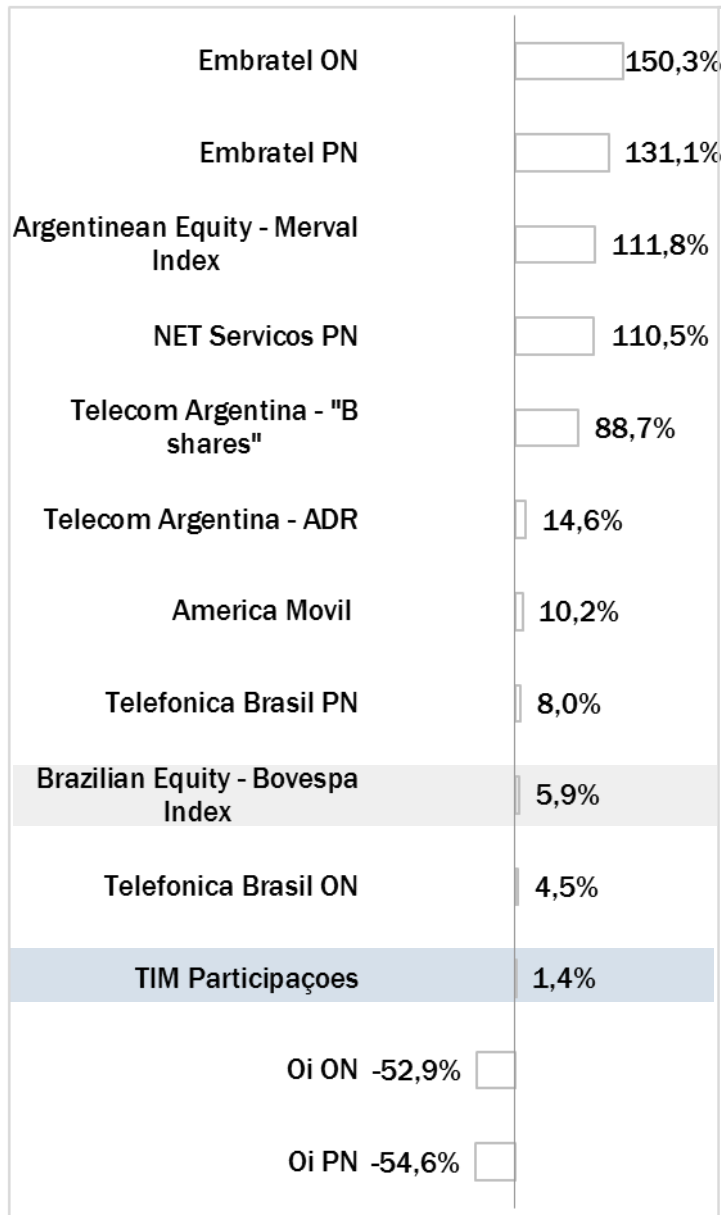
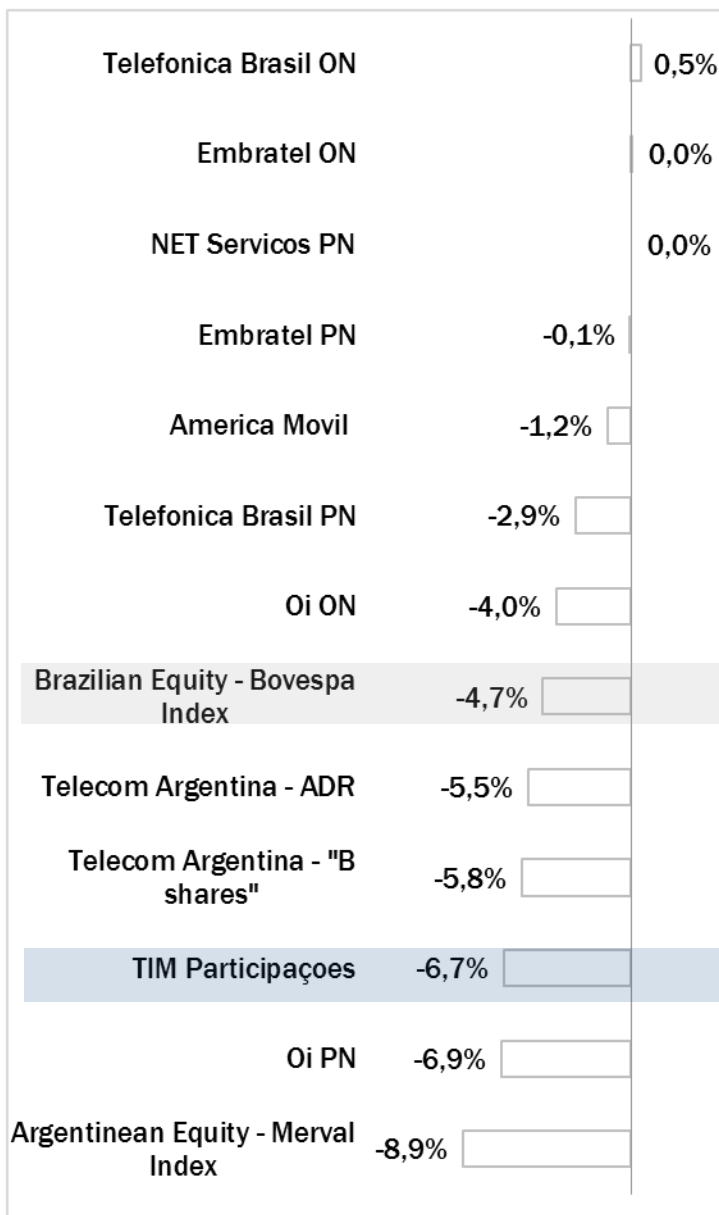
Source: Bloomberg LP

Brazil: Stock Performance of Main TLC Operators

Last Week Performance

2014 Year-To-Date Performance

Last 1 Year Performance



Performance Summary of Main LatAm TLC Operators

Cl. Price 03-Oct-14	Performance (Δ%)*					Last 52 weeks		Daily average volume **		Market Cap. (mln)***	
	1 week	1 month	6 months	1 year	from Jan. '14	Low Price	High Price	1 week	1 month		
BRAZIL											
Index											
Brazilian Equity - Bovespa Index	R\$ 54,539.55	-4.7%	-10.1%	6.8%	3.2%	5.9%	44,904.83	62,304.88	460,443,117	393,619,113	R\$ 1,806,758
Peers											
TIM Participações	R\$ 12.50	-6.7%	-0.1%	7.4%	13.7%	1.4%	R\$ 10.22	R\$ 14.09	4,658,740	4,900,830	R\$ 30,252
Oi ON	R\$ 1.70	-4.0%	2.4%	-43.9%	-56.6%	-52.9%	R\$ 1.22	R\$ 4.89	6,952,720	5,893,844	R\$ 4,865
Oi PN	R\$ 1.63	-6.9%	1.9%	-45.1%	-55.2%	-54.6%	R\$ 1.17	R\$ 4.62	45,085,060	45,924,030	R\$ 9,329
Telefonica Brasil ON	R\$ 41.80	0.5%	-0.7%	4.5%	-1.2%	4.5%	R\$ 36.49	R\$ 44.31	130,720	54,643	R\$ 15,950
Telefonica Brasil PN	R\$ 48.43	-2.9%	-2.1%	5.8%	0.5%	8.0%	R\$ 41.66	R\$ 52.38	1,352,560	1,270,303	R\$ 36,033
Embratel ON	R\$ 21.00	0.0%	0.0%	191.3%	180.0%	150.3%	R\$ 6.60	R\$ 23.88	4,340	1,300	R\$ 13,403
Embratel PN	R\$ 19.99	-0.1%	-2.1%	173.1%	152.4%	131.1%	R\$ 6.70	R\$ 23.50	2,620	8,167	R\$ 11,857
NET Servicos PN	R\$ 47.00	0.0%	-2.1%	80.6%	62.8%	110.5%	R\$ 18.98	R\$ 63.85	7,400	2,983	R\$ 11,734
ARGENTINA											
Index											
Argentinean Equity - Merval Index	11,419.41	-8.9%	9.6%	78.8%	135.2%	111.8%	4,832.19	12,599.42	7,400	2,983	ARS 1,531,942
Integrated											
Telecom Argentina - "B shares"	ARS 58.50	-5.8%	14.7%	67.1%	84.5%	88.7%	ARS 27.40	ARS 62.50	127,922	119,895	ARS 57,586
Telecom Argentina - ADR	\$19.76	-5.5%	1.3%	9.1%	14.6%	14.6%	\$13.93	\$25.56	150,225	135,169	\$3,890
Nortel Inversora B shares - ADR	\$22.09	-0.9%	3.9%	25.4%	13.3%	11.0%	\$15.84	\$26.37	2,304	4,649	\$3,005
MEXICO											
Index											
Mexican Equity - Mexbol Index	44,678.14	-0.5%	-3.4%	10.0%	9.2%	4.6%	37,751.64	46,554.28	183,036,787	178,514,365	MXN 5,005,870
Mobile/Integrated											
America Movil	MXN 16.78	-1.2%	-2.3%	24.2%	25.5%	10.2%	MXN 12.39	MXN 17.64	58,070,550	61,207,140	MXN 1,156,618
TV											
Grupo Televisa	MXN 92.71	1.5%	-4.5%	5.0%	24.7%	17.8%	MXN 72.21	MXN 99.21	3,727,670	2,945,492	MXN 268,127

* performance calculated on closing price

** n. of traded shares

*** For Telecom Argentina, reported market capitalization represents estimated market capitalization of all Classes of Shares (A,B,C - of which only Class B is listed).



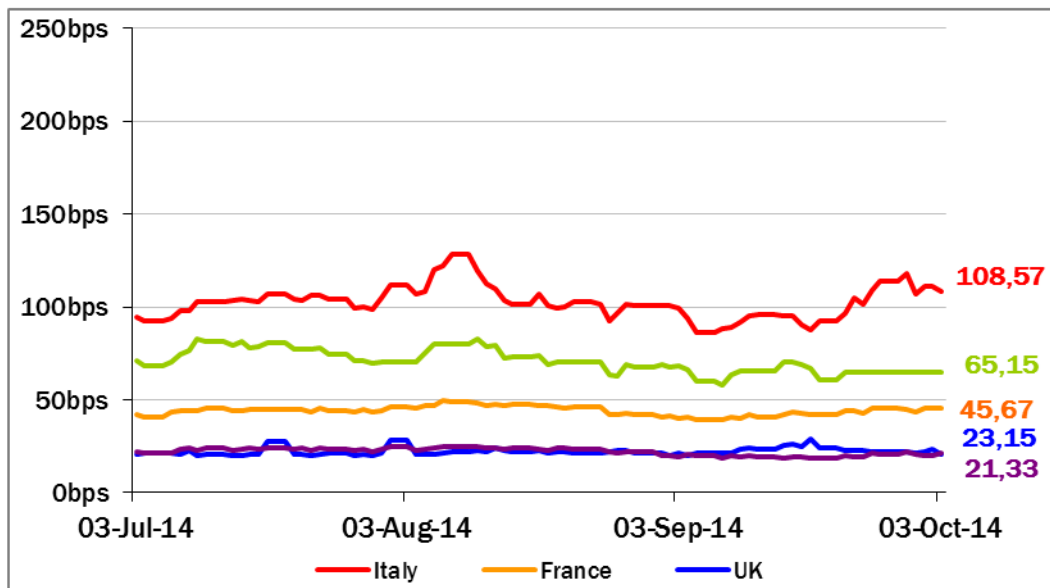
European Telecoms Sector: Credit Outlook

Long-term Credit Ratings

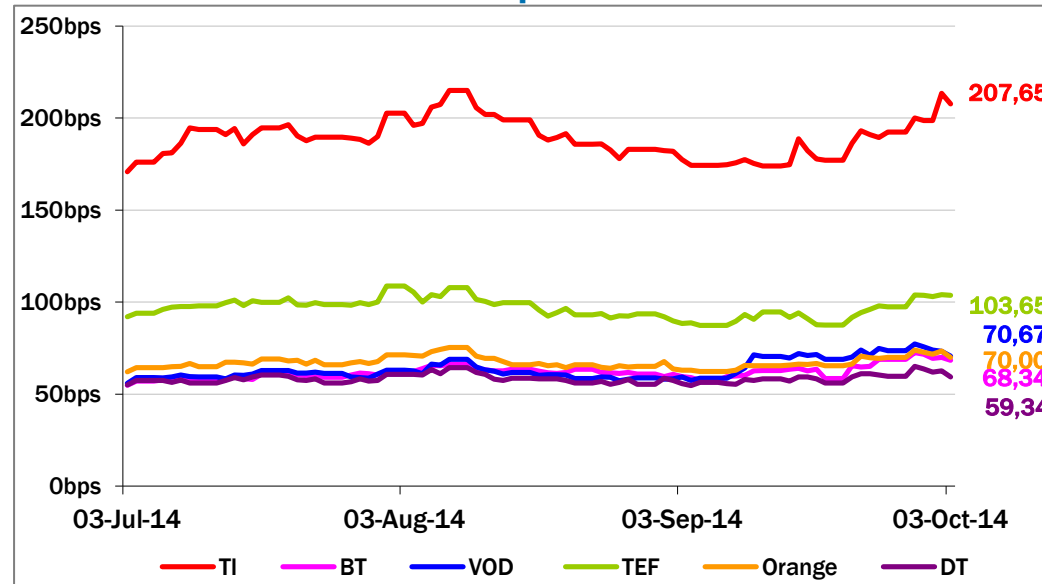
	Moody's		S&P		Fitch	
	rating	outlook	rating	outlook	rating	outlook
Telecom Italia	Ba1	NEG	BB+	NEG	BBB-	NEG
Belgacom	A1	STABLE	A	STABLE	n.a.	n.a.
British Telecom	Baa2	POS	BBB	STABLE	BBB	POS
Deutsche Telekom	Baa1	STABLE	BBB+	STABLE	BBB+	STABLE
Orange	Baa1	STABLE	BBB+	NEG	BBB+	NEG
KPN	Baa3	STABLE	BBB-	STABLE	BBB-	STABLE
Oi	Ba1	NEG	BB+	STABLE	BB+	STABLE
Swisscom	A2	STABLE	A	STABLE	n.a.	n.a.
Telefonica	Baa2	NEG	BBB	STABLE	BBB+	NEG
Telekom Austria	Baa2	STABLE	BBB	STABLE	n.a.	n.a.
Telenor	A3	STABLE	A-	POS	A-	STABLE
Telia Sonera	A3	STABLE	A-	STABLE	A-	STABLE
Vodafone	Baa1	STABLE	A-	NEG	BBB+	STABLE
Wind Telecomunicazioni SpA	B2	STABLE	BB-	STABLE	B+	STABLE
Vimpelcom	Ba3	STABLE	BB	POS	n.a.	n.a.

5 Years CDS levels

Countries



TLC Operators





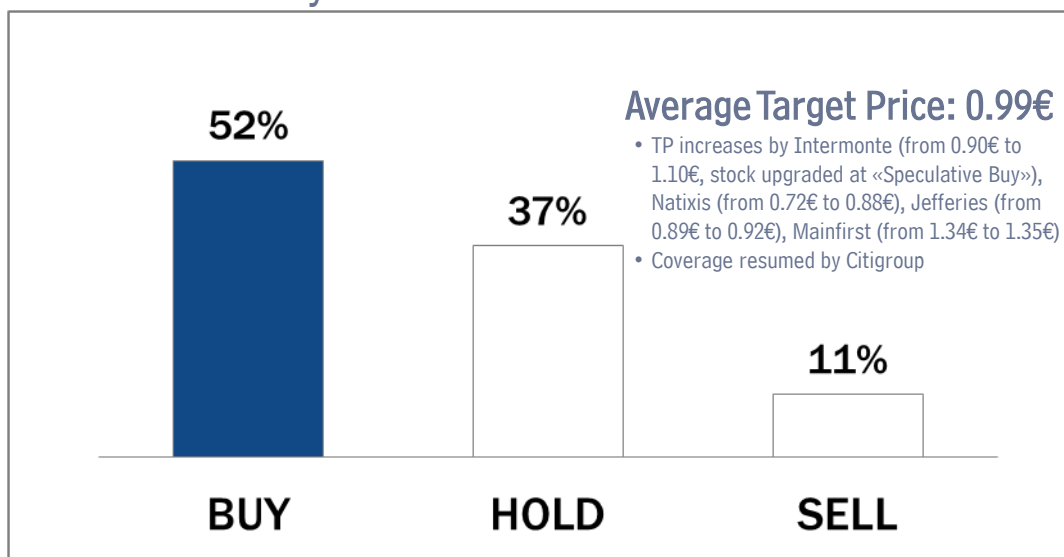
Telecom Italia Group – Weekly Performance: Price (€) and Volumes (mln)

TI Ordinary Shares

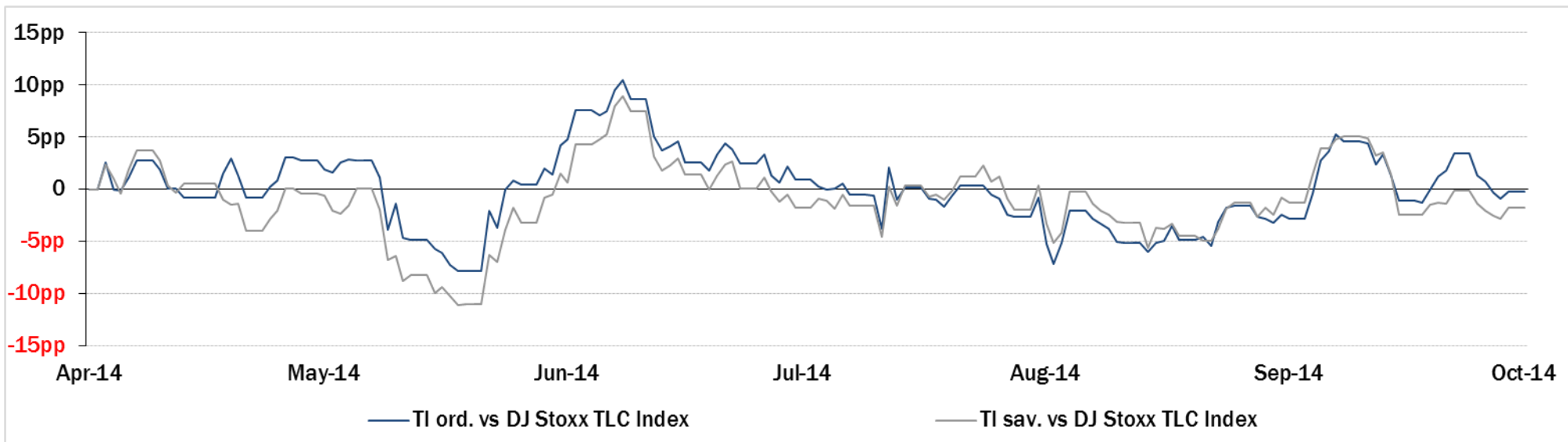
TI Saving Shares



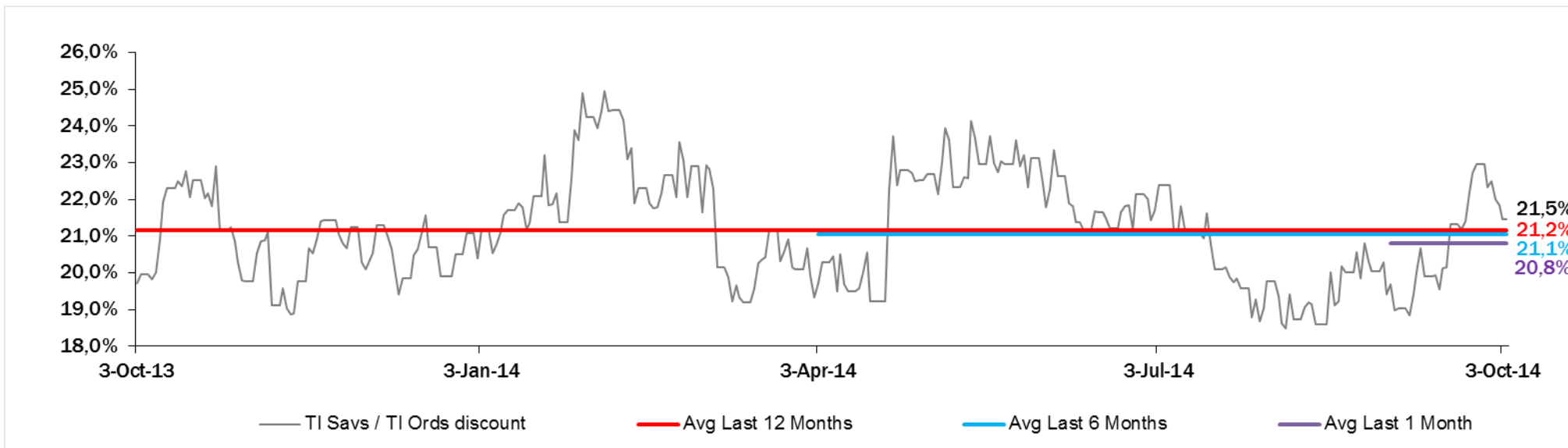
Analysts' Recommendations on TI Ords.



Relative Performance Last 6 Months of Telecom Italia Shares vs TLC Sector



Evolution of the spread between Telecom Italia shares (TI Savs / TI Ords) in the last 12 months



Performance Summary of FTSE MIB



Cl. Price €	Performance (Δ%)*					Last 52 weeks		Daily average volume		Market** Cap. mil. Euro	
	03-Oct-14	1 week	1 month	6 months	1 year	from Jan. '14	Low Price	High Price	1 week		1 month
Index											
FTSE MIB (Milan)	20,201	-2.9%	-5.6%	-8.9%	10.4%	6.5%	17,749	22,590	675,009,894	632,270,210	415,037
FTSE Italia All-Share (Milan)	21,345	-2.7%	-5.7%	-9.7%	10.4%	5.6%	18,949	23,913	875,669,645	832,498,154	497,088

Stocks FTSE MIB

A2A SPA	0.76	-3.6%	-12.5%	-18.8%	-6.4%	-10.9%	0.73	1.03	14,571,280	14,681,210	2,375
ANSALDO STS SPA	8.90	1.0%	11.6%	17.7%	37.7%	26.0%	6.39	9.06	1,117,211	1,270,614	1,780
ASSICURAZIONI GENERALI	16.19	-2.2%	-1.5%	-4.6%	4.4%	-5.3%	14.96	17.70	8,009,520	6,202,196	25,206
ATLANTIA SPA	18.86	-1.2%	-5.3%	-1.6%	21.9%	15.6%	15.34	21.50	2,505,484	1,986,892	15,574
AUTOGRILL SPA	6.09	-4.0%	-10.6%	-20.4%	-0.2%	-0.9%	5.52	7.77	1,274,203	1,207,202	1,548
AZIMUT HOLDING SPA	19.03	-6.4%	-9.8%	-26.4%	9.7%	-1.0%	16.89	25.92	890,251	992,935	2,726
BANCA MONTE DEI PASCHI SIENA	1.01	-2.6%	-14.8%	-43.2%	-26.0%	-8.3%	0.94	2.73	66,543,300	71,643,020	5,142
BANCA POPOL EMILIA ROMAGNA	6.14	-0.5%	-10.3%	-29.5%	11.7%	-2.6%	5.07	8.87	3,508,804	3,544,672	2,945
BANCA POPOLARE DI MILANO	0.63	-1.2%	-2.5%	-4.8%	46.5%	57.9%	0.36	0.74	64,422,930	70,280,920	2,784
BANCO POPOLARE SC	11.25	-1.9%	-13.8%	-26.0%	16.3%	6.6%	8.90	16.41	4,489,020	4,083,664	4,075
BUZZI UNICEM SPA	10.55	1.3%	-12.4%	-24.8%	-12.4%	-19.5%	10.03	15.20	1,153,156	885,035	2,015
CNH INDUSTRIAL NV	6.19	-1.3%	-5.8%	-25.8%	-33.4%	-25.3%	5.92	9.49	4,757,596	4,144,204	8,377
DAVIDE CAMPARI-MILANO SPA	5.57	-1.2%	-6.5%	-9.4%	-15.3%	-8.4%	5.50	6.60	1,450,199	1,108,571	3,235
ENEL GREEN POWER SPA	1.95	-3.4%	-8.0%	-3.7%	17.4%	6.3%	1.64	2.19	10,886,510	6,450,199	9,730
ENEL SPA	4.07	-2.8%	-3.7%	-1.2%	35.1%	28.3%	2.98	4.49	43,988,890	32,496,680	38,290
ENI SPA	17.88	-3.6%	-8.1%	-2.3%	4.0%	2.2%	16.20	20.46	20,738,900	20,011,830	64,979
EXOR SPA	29.61	-4.1%	-4.2%	-9.3%	1.6%	2.4%	26.62	33.48	409,471	353,303	7,291
FIAT SPA	7.45	-7.5%	-2.9%	-14.6%	19.6%	25.2%	5.17	9.08	25,604,740	15,540,430	9,313
FINMECCANICA SPA	7.32	-3.6%	0.4%	0.6%	39.9%	32.9%	4.85	7.89	5,711,401	4,655,776	4,229
GTECH SPA	18.47	-1.7%	1.1%	-17.2%	-14.1%	-16.7%	15.24	24.13	778,277	498,016	3,231
INTESA SANPAOLO	2.33	-4.0%	-5.1%	-9.9%	38.2%	30.0%	1.63	2.66	148,576,900	140,762,400	38,127
LUXOTTICA GROUP SPA	40.69	0.1%	-0.5%	-2.9%	5.7%	4.5%	35.22	43.30	752,887	703,469	19,560
MEDIASET SPA	2.94	-2.9%	-14.4%	-32.0%	-9.2%	-14.6%	2.76	4.45	10,836,800	9,540,728	3,478
MEDIOBANCA SPA	6.80	0.4%	-6.1%	-18.9%	15.1%	6.8%	5.74	8.49	5,824,452	5,102,181	5,854
MEDIOLANUM SPA	5.43	-4.2%	-9.4%	-24.1%	-6.5%	-13.9%	5.12	7.19	1,863,682	1,763,792	3,998
PIRELLI & C.	10.61	-2.7%	-13.0%	-10.0%	9.7%	-15.7%	9.76	12.99	3,253,568	2,441,497	5,173
PRYSMIAN SPA	14.22	-0.8%	-10.4%	-25.9%	-25.2%	-24.0%	13.80	19.79	1,992,034	1,177,512	3,070
SAIPEM SPA	15.75	-4.5%	-10.8%	-11.2%	-6.3%	1.2%	14.81	21.00	2,687,403	1,837,518	6,952
SALVATORE FERRAGAMO SPA	20.92	-6.7%	-8.5%	-2.3%	-20.5%	-24.3%	18.96	29.85	584,219	605,664	3,523
SNAM SPA	4.27	-2.3%	-6.5%	2.0%	15.0%	4.9%	3.69	4.58	11,962,280	8,479,254	14,426
STMICROELECTRONICS NV	6.13	2.2%	-6.4%	-8.6%	-9.0%	6.1%	5.26	7.42	5,558,881	5,092,603	5,583
TELECOM ITALIA SPA	0.881	-5.3%	1.3%	0.3%	37.9%	22.2%	0.60	1.01	88,641,120	104,275,900	16,038
TENARIS SA	16.82	-7.3%	-3.6%	3.1%	0.1%	5.9%	14.78	18.29	2,829,953	1,837,958	19,857
TERNA SPA	3.91	-1.0%	-4.8%	-0.7%	14.3%	7.6%	3.38	4.14	8,061,095	7,072,380	7,855
TOD'S SPA	75.50	-6.2%	-14.4%	-22.3%	-45.5%	-37.8%	75.00	137.70	161,395	140,186	2,311
UNICREDIT SPA	6.15	-1.0%	-4.1%	-10.0%	17.5%	14.2%	5.01	6.89	76,761,990	62,807,010	36,050
UBI BANCA SCPA	6.49	0.1%	-1.6%	-13.8%	47.7%	31.4%	4.33	7.55	9,043,142	8,586,632	5,848
UNIPOLSAI SPA	2.19	-5.5%	-9.1%	-18.7%	33.0%	-1.1%	1.63	2.72	8,237,465	6,099,488	6,090
WORLD DUTY FREE SPA	7.98	-10.3%	-7.1%	-22.9%	1.9%	-12.7%	7.51	11.07	3,565,343	1,372,347	2,030
YOOX SPA	16.86	-6.0%	-16.7%	-30.0%	-32.8%	-48.3%	16.38	35.09	1,316,705	982,116	1,005

** for FTSE MIB stocks, market cap here reported on overall shares outstanding

Source: Bloomberg LP