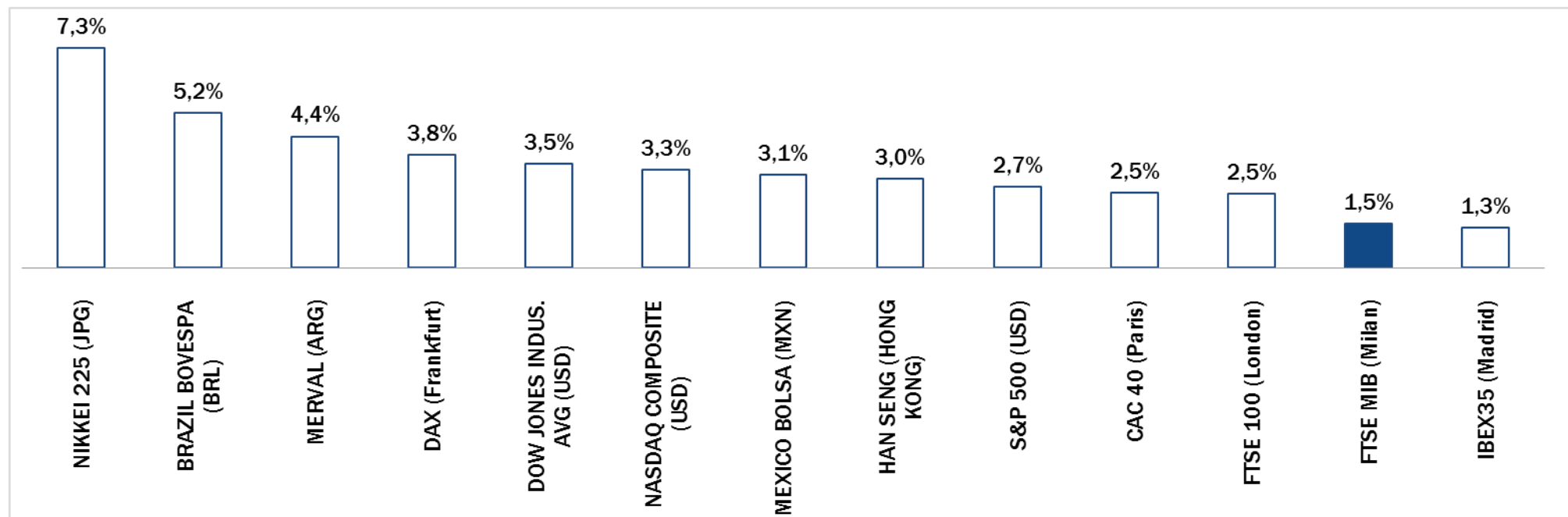


Weekly Stock Market Report for Telecom Italia Retail Shareholders

October 27th – October 31st , 2014

Weekly Performance Summary of Major Worldwide Market Stock Exchanges



Index Point as of 31-Oct-14	Performance (Δ)*					Last 52 weeks		Daily average volume **		Market Cap. (mln. local cur.)	
	1 week	1 month	6 months	1 year	from Jan. '14	Low Price	High Price	1 week	1 month		
Europe											
FTSE MIB (Milan)	19,784	1.5%	-2.1%	-9.2%	3.2%	4.3%	17,556	22,590	1,072,055,514	856,373,575	406,551
FTSE 100 (London)	6,546	2.5%	0.3%	-4.0%	-2.8%	-3.0%	6,073	6,905	861,876,698	876,471,753	1,790,064
DAX (Frankfurt)	9,327	3.8%	1.4%	-2.4%	3.5%	-2.4%	8,355	10,051	104,599,512	114,120,891	918,855
CAC 40 (Paris)	4,233	2.5%	-1.1%	-5.0%	-0.9%	-1.5%	3,789	4,599	165,526,280	151,583,040	1,141,183
IBEX35 (Madrid)	10,478	1.3%	-0.8%	0.0%	6.5%	5.7%	9,232	11,249	452,561,690	464,028,129	551,286
America											
DOW JONES INDUS. AVG (USD)	17,391	3.5%	2.2%	5.3%	11.4%	4.9%	15,341	17,396	86,950,645	96,249,648	4,953,937
S&P 500 (USD)	2,018	2.7%	2.5%	7.3%	14.6%	9.2%	1,738	2,019	549,898,522	580,386,820	18,441,464
NASDAQ COMPOSITE (USD)	4,631	3.3%	3.5%	12.3%	18.1%	10.9%	3,855	4,642	533,987,725	544,665,250	7,012,296
MEXICO BOLSA (MXN)	45,028	3.1%	0.8%	9.9%	9.6%	5.4%	37,752	46,554	197,357,757	192,961,581	2,247,930
Merval (ARG)	11,019	4.4%	-3.5%	62.5%	116.3%	104.4%	5,088	12,599	6,930,293	13,786,783	11,018
BRAZIL BOVESPA (BRL)	54,629	5.2%	0.2%	3.1%	1.1%	6.1%	44,905	62,305	619,571,904	484,850,310	1,793,338
Asia											
NIKKEI 225 (JPG)	16,414	7.3%	4.5%	13.5%	15.6%	0.8%	13,885	16,534	1,689,253,043	1,516,604,454	307,263,328
HAN SENG (HONG KONG)	23,998	3.0%	4.0%	7.8%	3.2%	3.0%	21,138	25,363	1,760,050,509	1,587,121,141	14,727,807

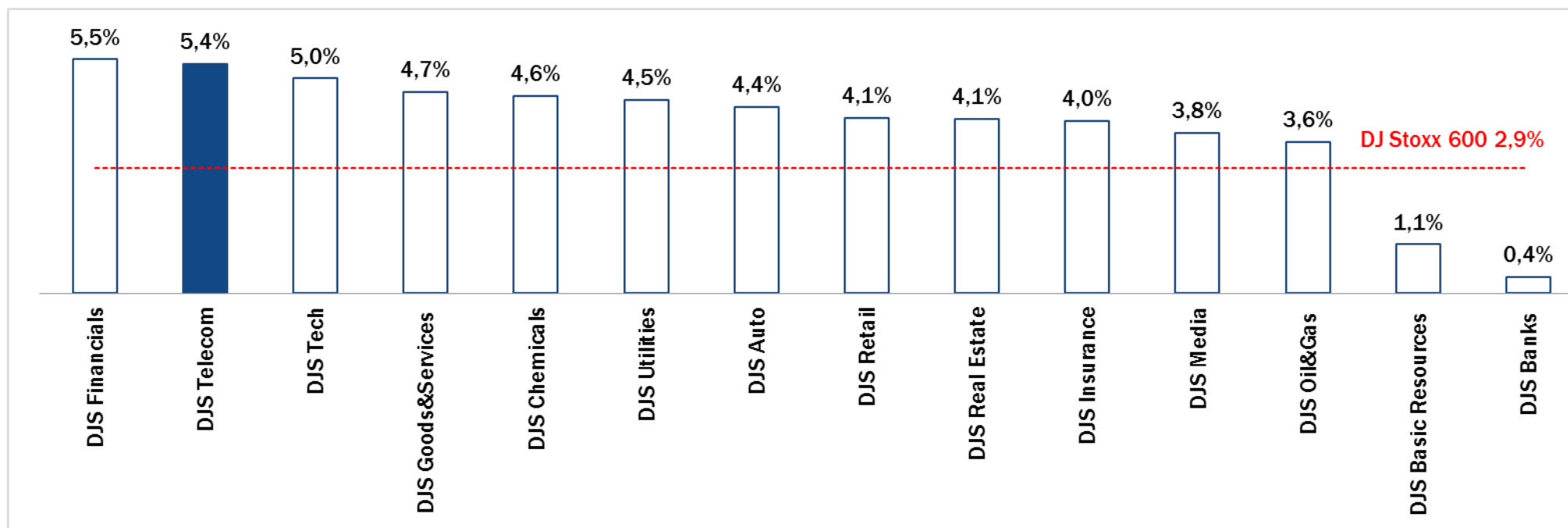
* performance calculated on closing price

** n. of traded shares

Source: Bloomberg LP

NB: Weekly performances are referred to last 5 open market sessions.

Weekly Performance Summary of Major European Sectors



Index	Index Point as of 31-Oct-14	Performance (Δ)%*					Last 52 weeks		Daily average volume **		Market Cap. (mln. local cur.)
		1 week	1 month	6 months	1 year	from Jan. '14	Low Price	High Price	1 week	1 month	
DJStoxx 600	336.8	2.9%	0.5%	-0.3%	4.8%	2.6%	302.48	350.85	3,707,473,050	3,452,989,696	8,584,161.00

Sectors

Sector	Index Point	1 week	1 month	6 months	1 year	from Jan. '14	Low Price	High Price	1 week	1 month	Market Cap.
DJS Telecom	303.69	5.4%	0.6%	1.1%	3.7%	2.0%	265.32	310.37	338,655,053	325,684,788	426,599.75
DJS Auto	462.34	4.4%	4.2%	-9.5%	0.9%	-4.1%	407.83	536.66	60,000,749	52,393,780	261,513.50
DJS Banks	194.49	0.4%	-1.1%	-3.1%	1.1%	0.1%	173.86	209.5	1,988,734,950	1,688,389,060	1,206,019.38
DJS Basic Resources	388.14	1.1%	0.0%	-5.7%	-3.6%	-3.1%	369.17	455.43	96,569,595	105,809,296	279,974.47
DJS Chemicals	755.4	4.6%	2.6%	-1.0%	4.9%	-0.3%	677.03	793.87	20,484,630	21,276,330	365,302.69
DJS Oil&Gas	319.27	3.6%	-4.0%	-11.2%	-5.0%	-4.7%	287.36	381.9	172,352,480	166,100,234	611,815.00
DJS Financials	353.99	5.5%	4.4%	1.2%	9.8%	3.0%	307.16	368.62	36,673,238	37,621,070	147,948.25
DJS Goods&Services	394.87	4.7%	0.8%	-3.7%	-0.8%	-4.6%	351.98	425.9	174,093,712	185,629,543	880,788.81
DJS Insurance	239.38	4.0%	1.5%	5.3%	9.7%	4.9%	210.78	245	109,577,520	121,537,865	480,379.94
DJS Media	252.75	3.8%	1.9%	3.5%	3.1%	-0.5%	226.72	260.77	57,936,540	61,569,124	229,403.03
DJS Tech	286.13	5.0%	-1.8%	3.8%	2.8%	-1.5%	260.2	305.74	116,568,357	105,187,203	259,126.50
DJS Utilities	320.38	4.5%	1.1%	5.9%	14.9%	15.1%	265.76	328.18	172,631,587	177,606,749	457,969.31
DJS Retail	285.82	4.1%	1.6%	-7.6%	-12.8%	-12.1%	259.46	333.73	119,475,800	145,453,791	296,024.13
DJS Real Estate	157.29	4.1%	5.5%	7.8%	15.0%	15.5%	129.71	157.6	19,212,209	22,314,079	123,016.52

* performance calculated on closing price

** n. of traded shares

Source: Bloomberg LP

NB: Weekly performances are referred to last 5 open market sessions.

Europe: Stock Performance of Main TLC Operators

Last Week Performance

2014 Year-To-Date Performance

Last 1 Year Performance

Portugal Telecom	24,0%
Orange	9,8%
KPN	9,4%
Telecom Italia Ord.	7,6%
Deutsche Telekom	7,6%
Telecom Italia Sav.	7,1%
Teliasonera	6,3%
Telenor	6,2%
Elisa	6,0%
TEF Deutschland	5,5%
Swisscom	5,4%
DJStoxx Telecom	5,4%
Telefonica	4,8%
Talk Talk	4,8%
Vivendi	4,5%
Tele2	3,5%
Vodafone Group	3,4%
Freenet	2,8%
Ziggo	2,3%
Belgacom	2,1%
C&W Comm.	1,9%
TDC	1,7%
Inmarsat	-0,1%
Jazztel	-0,2%
British Telecom	-0,7%
Iliad	-2,7%
Telekom Austria	-3,3%
OTE	-8,9%

Jazztel	63,8%
Orange	41,3%
Belgacom	40,0%
Telecom Italia Sav.	29,5%
Tele2	28,6%
Telecom Italia Ord.	25,2%
Swisscom	20,3%
Ziggo	17,4%
Iliad	17,2%
Elisa	13,7%
KPN	11,7%
Telekom Austria	8,6%
Vivendi	7,3%
Telenor	4,8%
DJStoxx Telecom	2,0%
Telefonica	1,4%
Talk Talk	-1,9%
British Telecom	-3,1%
Deutsche Telekom	-3,3%
Freenet	-4,1%
Teliasonera	-4,7%
OTE	-6,8%
Inmarsat	-9,4%
TEF Deutschland	-10,6%
TDC	-13,9%
Vodafone Group	-14,0%
C&W Comm.	-14,2%
Portugal Telecom	-58,6%

Jazztel	58,9%
Belgacom	47,2%
Telecom Italia Sav.	28,1%
Telecom Italia Ord.	25,8%
Orange	25,3%
Ziggo	23,4%
Swisscom	22,9%
Tele2	20,0%
Elisa	19,7%
Talk Talk	13,5%
Vivendi	10,4%
KPN	10,2%
Freenet	8,5%
Telenor	4,3%
DJStoxx Telecom	3,7%
Deutsche Telekom	3,4%
Iliad	3,3%
C&W Comm.	3,1%
OTE	1,2%
Telekom Austria	-1,4%
British Telecom	-2,9%
Teliasonera	-5,4%
Inmarsat	-5,5%
Telefonica	-6,7%
TEF Deutschland	-7,8%
TDC	-8,1%
Vodafone Group	-12,3%
Portugal Telecom	-61,0%

Performance Summary of Main European TLC Operators

Cl. Price (local currency) 31-Oct-14	Performance ($\Delta\%$)*					Last 52 weeks		Daily average volume **		Market Cap. (all in €mln)
	1 week	1 month	6 months	1 year	from Jan. '14	Low Price	High Price	1 week	1 month	

EUROPE

Index

DJStoxx Telecom	303.69	5.4%	0.6%	1.1%	3.7%	2.0%	265.32	310.37	338,655,053	325,684,788
-----------------	--------	------	------	------	------	------	--------	--------	-------------	-------------

TLC Operators

Telecom Italia Ord.	0.9025	7.6%	-0.6%	-2.3%	25.8%	25.2%	0.652	1.012	136,892,900	117,859,200	12,158
Telecom Italia Sav.	0.7130	7.1%	1.4%	-0.3%	28.1%	29.5%	0.499	0.792	22,838,340	16,676,040	4,297
Altice	49.69	10.4%	20.2%	20.6%	n.a.	n.a.	25.505	57.010	160,574	107,610	12,309
Belgacom	30.11	2.1%	8.0%	36.5%	47.2%	40.0%	19.975	30.825	1,290,740	908,263	10,178
British Telecom	367.50	-0.7%	-3.2%	-2.5%	-2.9%	-3.1%	350.300	421.200	16,426,800	14,875,490	38,209
C&W Comm.	48.24	1.9%	3.9%	-7.6%	3.1%	-14.2%	42.910	58.500	4,940,456	8,082,702	1,557
Deutsche Telekom	12.02	7.6%	1.3%	-0.5%	3.4%	-3.3%	10.065	13.150	13,286,860	14,915,460	54,518
Elisa	21.90	6.0%	5.8%	1.7%	19.7%	13.7%	17.580	22.850	524,775	568,430	3,665
Freenet	20.89	2.8%	2.1%	-16.2%	8.5%	-4.1%	17.695	25.960	360,105	508,826	2,675
Orange	12.72	9.8%	11.4%	8.9%	25.3%	41.3%	8.388	12.860	9,759,188	10,888,020	33,681
OTE	9.01	-8.9%	-14.7%	-21.6%	1.2%	-6.8%	8.260	13.200	970,339	1,101,551	4,416
Iliad	174.50	-2.7%	3.2%	-10.3%	3.3%	17.2%	144.850	247.400	79,978	128,950	10,134
Inmarsat	685.00	-0.1%	-2.1%	-6.4%	-5.5%	-9.4%	636.000	774.500	731,255	723,385	3,920
Jazztel	12.74	-0.2%	-0.5%	15.2%	58.9%	63.8%	7.210	12.860	7,954,496	5,394,328	3,266
KPN	2.62	9.4%	5.1%	2.1%	10.2%	11.7%	2.133	2.805	23,412,150	15,992,680	11,175
TEF Deutschland	3.92	5.5%	-5.2%	-10.4%	-7.8%	-10.6%	3.466	5.052	2,103,343	4,689,581	11,663
Portugal Telecom	1.31	24.0%	-20.3%	-56.4%	-61.0%	-58.6%	0.865	3.639	19,930,240	13,997,660	1,172
Swisscom	566.50	5.4%	5.2%	5.9%	22.9%	20.3%	447.600	566.500	132,731	115,307	24,336
Talk Talk	300.10	4.8%	1.7%	4.1%	13.5%	-1.9%	245.000	334.300	2,011,245	1,860,657	3,658
TDC	45.31	1.7%	2.1%	-11.2%	-8.1%	-13.9%	40.400	57.700	2,314,690	2,345,754	4,943
Telefonica	12.00	4.8%	-1.7%	-0.6%	-6.7%	1.4%	10.760	12.990	27,263,370	27,494,740	54,590
Telenor	151.60	6.2%	7.7%	8.7%	4.3%	4.8%	123.900	153.800	2,472,695	1,853,730	26,916
Tele2	93.70	3.5%	8.7%	12.9%	20.0%	28.6%	68.750	95.200	3,579,923	2,445,443	4,512
Telekom Austria	5.98	-3.3%	-16.4%	-16.4%	-1.4%	8.6%	5.310	7.595	422,585	667,756	2,649
Teliasonera	51.05	6.3%	3.1%	8.2%	-5.4%	-4.7%	43.980	54.900	9,542,609	11,735,950	23,887
Vivendi	19.48	4.5%	4.0%	6.2%	10.4%	7.3%	16.446	20.290	4,749,721	5,515,072	26,262
Vodafone Group	207.30	3.4%	1.7%	-6.1%	-12.3%	-14.0%	179.100	252.300	71,832,430	82,132,260	70,128
Ziggo	38.99	2.3%	5.8%	24.6%	23.4%	17.4%	30.500	39.320	351,133	411,639	7,797

* performance calculated on closing price ** n. of traded shares

Source: Bloomberg LP



Brazil: Stock Performance of Main TLC Operators

Last Week Performance

TIM Participações	20,4%
Oi PN	20,4%
Oi ON	20,2%
Embratel PN	9,8%
Telefonica Brasil PN	9,3%
NET Servicos PN	9,3%
Embratel ON	9,0%
Telecom Argentina - "B shares"	8,6%
Telefonica Brasil ON	7,3%
Telecom Argentina - ADR	5,8%
Brazilian Equity - Bovespa Index	5,2%
Argentinean Equity - Merval Index	4,4%
America Movil	2,6%

2014 Year-To-Date Performance

Embratel ON	114,4%
Embratel PN	113,9%
NET Servicos PN	110,5%
Argentinean Equity - Merval Index	104,4%
Telecom Argentina - "B shares"	99,0%
Telecom Argentina - ADR	33,8%
Telefonica Brasil PN	12,9%
TIM Participações	9,2%
America Movil	8,0%
Telefonica Brasil ON	7,3%
Brazilian Equity - Bovespa Index	6,1%
Oi ON	-62,0%
Oi PN	-63,8%

Last 1 Year Performance

Embratel PN	146,7%
Embratel ON	139,9%
Argentinean Equity - Merval Index	116,3%
Telecom Argentina - "B shares"	66,8%
NET Servicos PN	59,7%
TIM Participações	16,6%
America Movil	16,6%
Telecom Argentina - ADR	14,5%
Telefonica Brasil PN	6,4%
Brazilian Equity - Bovespa Index	1,1%
Telefonica Brasil ON	-1,2%
Oi PN	-64,9%
Oi ON	-64,9%

Performance Summary of Main LatAm TLC Operators

Cl. Price 31-Oct-14	Performance ($\Delta\%$)*					Last 52 weeks		Daily average volume **		Market Cap. (mln)***	
	1 week	1 month	6 months	1 year	from Jan. '14	Low Price	High Price	1 week	1 month		
BRAZIL											
Index											
Brazilian Equity - Bovespa Index	R\$ 54,628.60	5.2%	0.2%	3.1%	1.1%	6.1%	44,904.83	62,304.88	619,571,904	484,850,310	R\$ 1,793,338
Peers											
TIM Participações	R\$ 13.47	20.4%	7.7%	11.3%	16.6%	9.2%	R\$ 10.19	R\$ 14.09	7,110,760	5,146,254	R\$ 32,611
Oi ON	R\$ 1.37	20.2%	-20.8%	-39.1%	-64.9%	-62.0%	R\$ 1.08	R\$ 4.89	6,903,700	6,582,837	R\$ 3,920
Oi PN	R\$ 1.30	20.4%	-22.2%	-39.3%	-64.9%	-63.8%	R\$ 1.02	R\$ 4.62	57,607,520	43,980,400	R\$ 7,440
Telefonica Brasil ON	R\$ 42.92	7.3%	2.8%	6.7%	-1.2%	7.3%	R\$ 36.49	R\$ 43.97	19,180	37,233	R\$ 16,378
Telefonica Brasil PN	R\$ 50.61	9.3%	7.2%	8.0%	6.4%	12.9%	R\$ 41.66	R\$ 52.38	1,160,000	1,156,027	R\$ 37,655
Embratel ON	R\$ 17.99	9.0%	-14.5%	67.3%	139.9%	114.4%	R\$ 6.60	R\$ 23.88	2,520	1,397	R\$ 11,482
Embratel PN	R\$ 18.50	9.8%	-4.4%	56.9%	146.7%	113.9%	R\$ 7.00	R\$ 23.50	1,780	1,060	R\$ 10,973
NET Servicos PN	R\$ 47.00	9.3%	3.3%	46.9%	59.7%	110.5%	R\$ 18.98	R\$ 63.85	420	2,920	R\$ 11,734
ARGENTINA											
Index											
Argentinean Equity - Merval Index	11,019.43	4.4%	-3.5%	62.5%	116.3%	104.4%	5,087.98	12,599.42	420	2,920	ARS 1,262,280
Integrated											
Telecom Argentina - "B shares"	ARS 61.70	8.6%	5.5%	54.3%	66.8%	99.0%	ARS 27.40	ARS 62.50	90,610	96,025	ARS 60,736
Telecom Argentina - ADR	\$23.07	5.8%	14.2%	12.0%	14.5%	33.8%	\$13.93	\$25.56	121,751	124,506	\$4,542
Nortel Inversora B shares - ADR	\$23.23	1.6%	4.6%	9.7%	11.7%	16.7%	\$15.84	\$26.37	8,613	6,377	\$3,160
MEXICO											
Index											
Mexican Equity - Mexbol Index	45,027.52	3.1%	0.8%	9.9%	9.6%	5.4%	37,751.64	46,554.28	197,357,757	192,961,581	MXN 5,008,987
Mobile/Integrated											
America Movil	MXN 16.43	2.6%	-0.8%	24.8%	16.6%	8.0%	MXN 12.39	MXN 17.64	71,426,620	54,083,100	MXN 1,126,490
TV											
Grupo Televisa	MXN 97.32	8.8%	8.4%	13.4%	22.0%	23.7%	MXN 73.20	MXN 99.21	3,493,452	3,090,303	MXN 281,459

* performance calculated on closing price ** n. of traded shares *** For Telecom Argentina, reported market capitalization represents estimated market capitalization of all Classes of Shares (A,B,C - of which only Class B is listed).



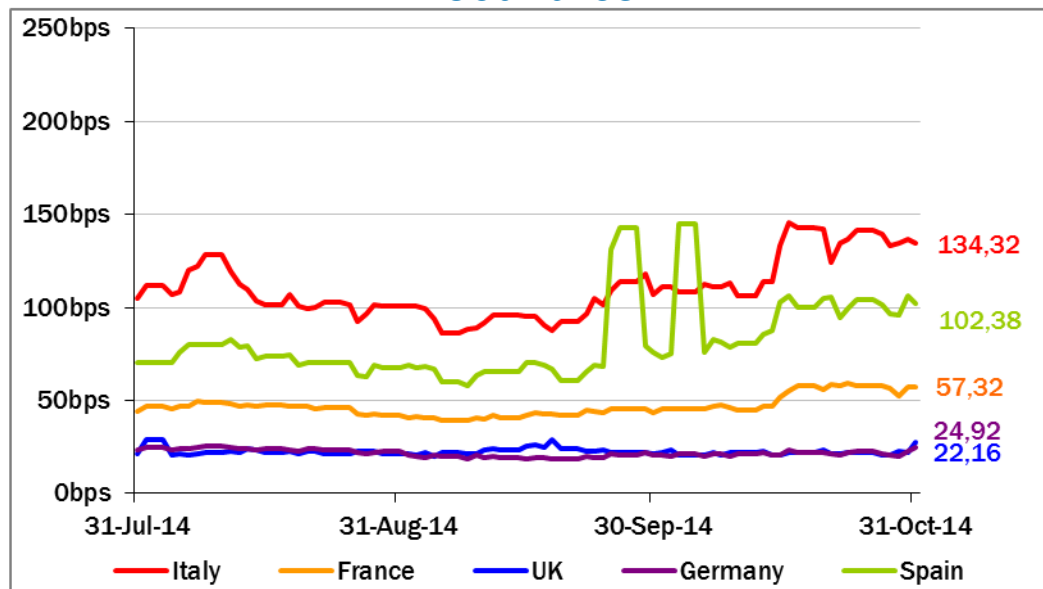
European Telecoms Sector: Credit Outlook

Long-term Credit Ratings

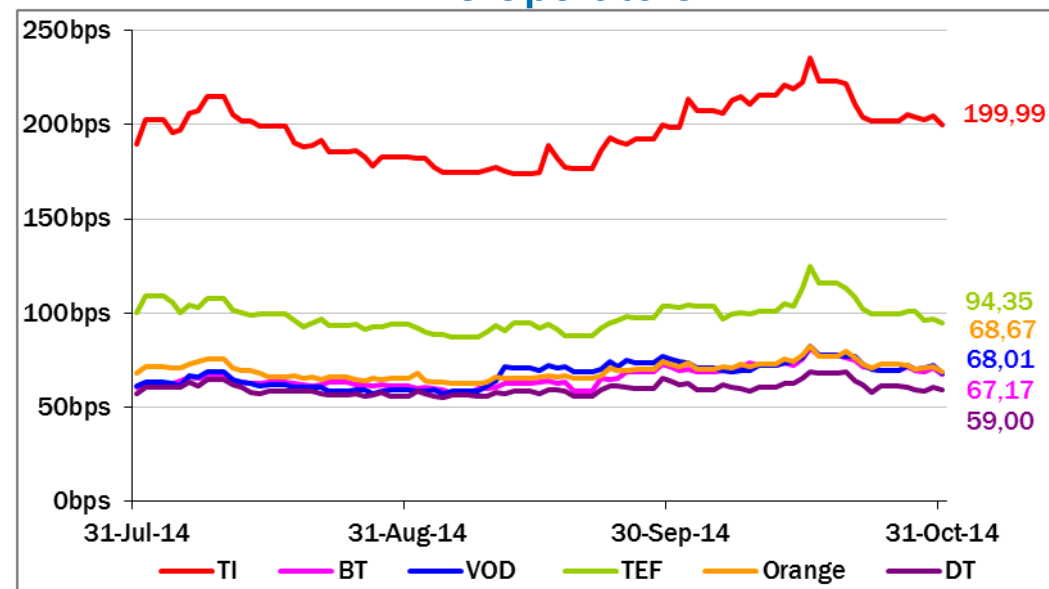
	Moody's		S&P		Fitch	
	rating	outlook	rating	outlook	rating	outlook
TELECOM ITALIA	Ba1	NEG	BB+	NEG	BBB-	NEG
BELGACOM	A1	STABLE	A	STABLE	n.a.	n.a.
BT GROUP	Baa2	POS	BBB	STABLE	BBB	POS
DEUTSCHE TELEKOM	Baa1	STABLE	BBB+	STABLE	BBB+	STABLE
ORANGE	Baa1	STABLE	BBB+	NEG	BBB+	NEG
KPN	Baa3	STABLE	BBB-	STABLE	BBB-	STABLE
OI GROUP	Ba1	NEG	BB+	STABLE	BB+	STABLE
SWISSCOM	A2	STABLE	A	STABLE	n.a.	n.a.
TELEFONICA	Baa2	NEG	BBB	STABLE	BBB+	NEG
TELEKOM AUSTRIA	Baa2	STABLE	BBB	STABLE	n.a.	n.a.
TELIASONERA	A3	NEG	A-	STABLE	A-	STABLE
TELENOR	A3	STABLE	A-	POS	n.a.	n.a.
VODAFONE GROUP	Baa1	STABLE	A-	NEG	BBB+	STABLE
WIND TELECOMUNICAZIONI	B2	STABLE	BB-	STABLE	B+	STABLE
VIMPELCOM	Ba3	STABLE	BB	POS	n.a.	n.a.

5 Years CDS levels

Countries



TLC Operators





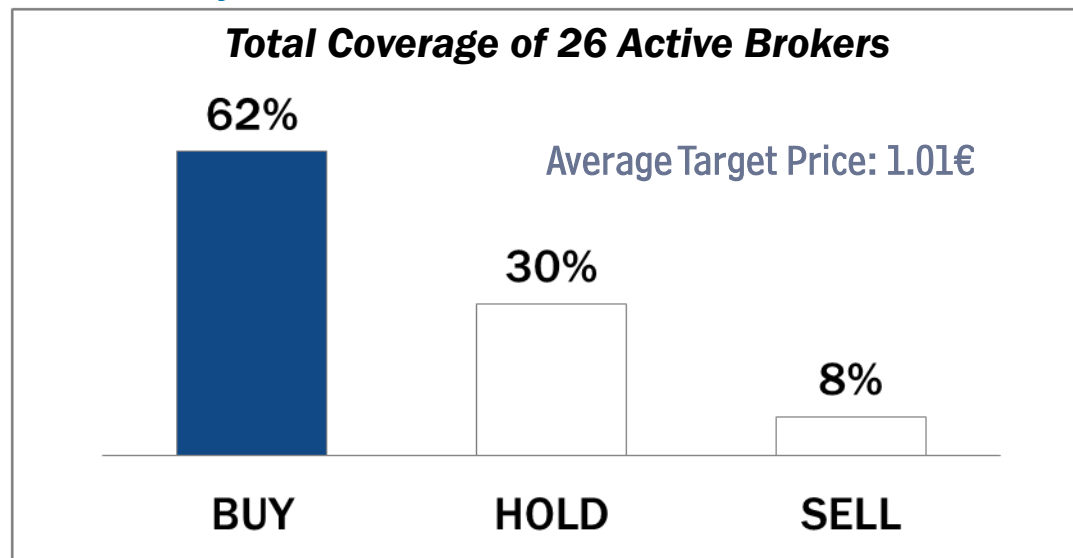
Telecom Italia Group – Weekly Performance: Price (€) and Volumes (mln)

TI Ordinary Shares

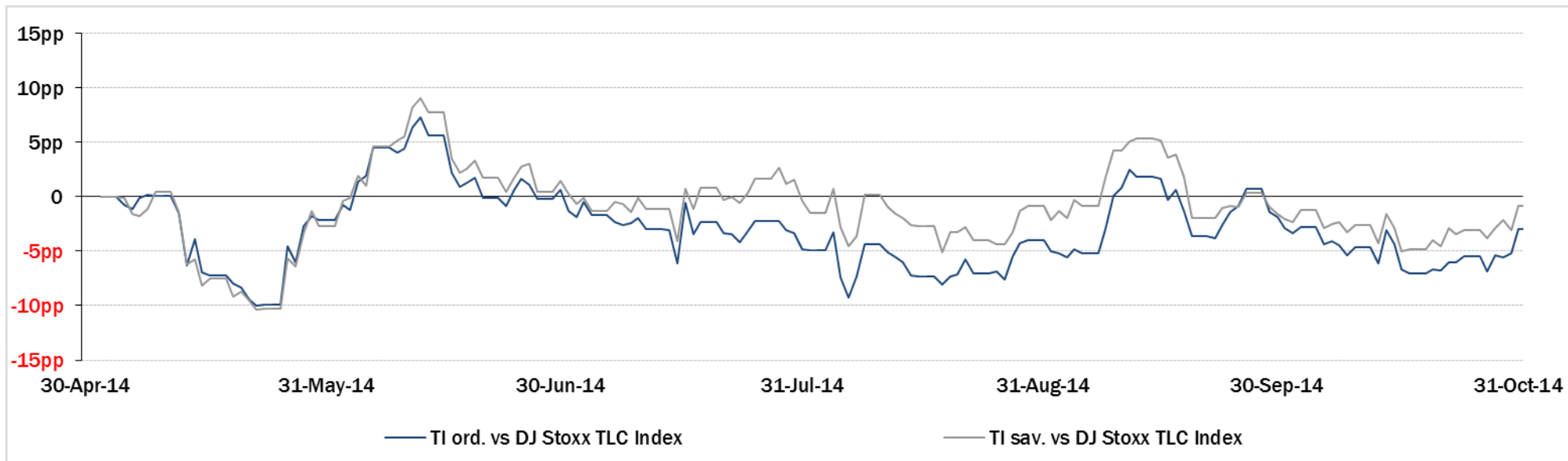
TI Saving Shares



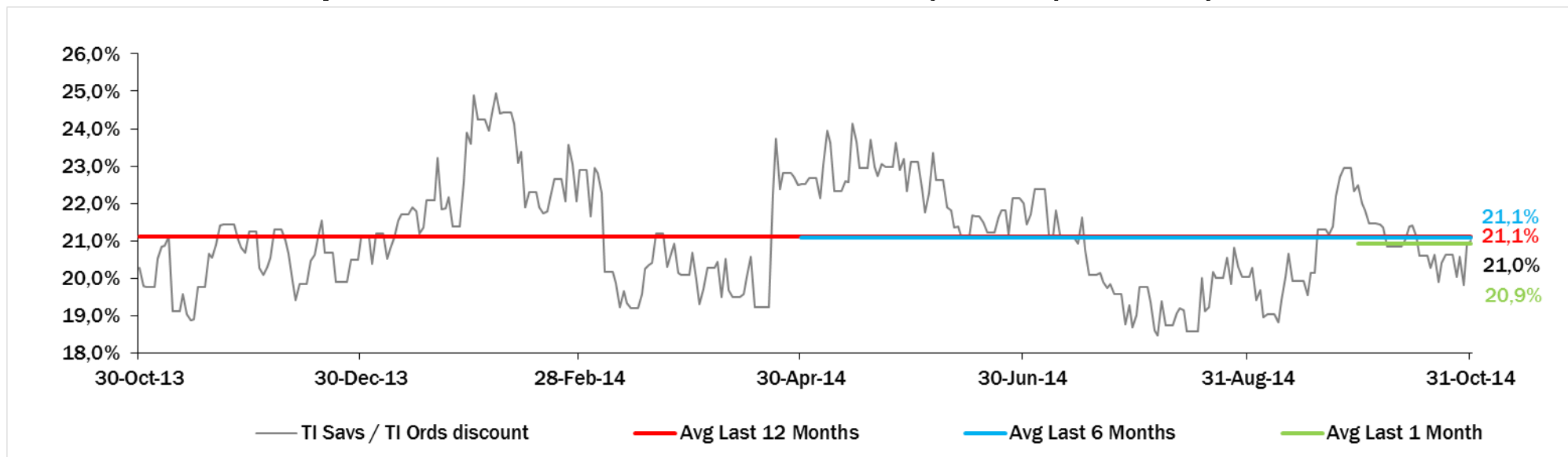
Analysts' Recommendations on TI Ords



Relative Performance Last 6 Months of Telecom Italia Shares vs TLC Sector



Evolution of the spread between Telecom Italia shares (TI Savs / TI Ords) in the last 12 months



Performance Summary of FTSE MIB



Index	Cl. Price € 31-Oct-14	Performance (Δ%)*					Last 52 weeks		Daily average volume		Market** Cap. mil. Euro
		1 week	1 month	6 months	1 year	from Jan. '14	Low Price	High Price	1 week	1 month	
FTSE MIB (Milan)	19,784	1.5%	-2.1%	-9.2%	3.2%	4.3%	17,556	22,590	1,072,055,514	856,373,575	406,551
FTSE Italia All-Share (Milan)	20,849	1.2%	-2.3%	-10.2%	2.6%	3.2%	18,587	23,913	1,452,127,693	1,112,949,195	486,089

Stocks FTSE MIB

A2A SPA	0.80	4.7%	2.1%	-9.3%	-3.9%	-6.1%	0.68	1.03	20,730,510	18,520,750	2,502
AUTOGRILL SPA	5.40	-0.8%	-14.4%	-21.9%	-16.0%	-12.1%	4.87	7.77	2,400,840	2,250,745	1,374
ATLANTIA SPA	18.80	4.4%	-3.3%	0.3%	17.4%	15.3%	15.34	21.50	2,560,886	2,958,012	15,525
AZIMUT HOLDING SPA	18.64	2.8%	-5.1%	-14.3%	5.1%	-3.0%	16.02	25.92	1,066,717	1,080,917	2,670
BANCA MONTE DEI PASCHI SIENA	0.61	-39.2%	-41.1%	-59.4%	-56.8%	-44.5%	0.60	2.73	241,309,600	123,097,100	3,111
BANCO POPOLARE SC	11.54	-6.3%	-2.2%	-22.2%	6.1%	9.3%	8.90	16.41	7,711,208	5,821,410	4,180
BANCA POPOL EMILIA ROMAGNA	6.07	-4.9%	-3.7%	-19.4%	-4.6%	-3.7%	5.07	8.87	5,559,315	4,569,064	2,912
BUZZI UNICEM SPA	10.77	-0.9%	-0.8%	-15.7%	-15.1%	-17.8%	9.45	15.20	1,086,731	1,371,092	2,039
CNH INDUSTRIAL NV	6.50	4.1%	5.0%	-22.6%	-22.3%	-21.5%	5.83	8.87	9,066,492	7,542,055	8,797
DAVIDE CAMPARI-MILANO SPA	5.74	4.6%	1.9%	-8.4%	-10.1%	-5.7%	5.04	6.48	1,153,563	1,462,688	3,331
ENEL GREEN POWER SPA	1.96	5.0%	-2.0%	-5.0%	11.7%	6.9%	1.65	2.19	10,854,670	9,742,774	9,790
ENEL SPA	4.07	5.7%	-1.9%	-0.1%	26.7%	28.2%	2.98	4.49	48,987,570	47,024,130	38,272
ENI SPA	17.00	3.7%	-8.7%	-9.1%	-7.6%	-2.8%	15.31	20.46	20,228,950	22,810,780	61,781
EXOR SPA	34.75	20.3%	14.6%	5.7%	22.0%	20.2%	26.62	34.95	1,122,788	572,581	8,556
FIAT CHRYSLER AUTOMOBILES NV	8.91	19.0%	n.a.	n.a.	n.a.	n.a.	6.57	9.03	33,186,210	n.a.	10,994
FINMECCANICA SPA	7.19	-0.3%	-5.5%	8.0%	34.1%	30.6%	4.85	7.89	5,453,384	5,399,897	4,157
ASSICURAZIONI GENERALI	16.34	2.1%	-1.0%	-2.9%	-4.7%	-4.4%	14.40	17.70	8,719,991	8,759,560	25,439
GTECH SPA	18.57	1.1%	-0.4%	-12.2%	-16.8%	-16.2%	15.24	24.13	761,555	774,282	3,249
INTESA SANPAOLO	2.34	-0.8%	-2.5%	-5.0%	27.8%	30.3%	1.63	2.66	193,790,700	181,483,400	38,176
LUXOTTICA GROUP SPA	40.63	5.3%	-0.9%	-1.6%	3.3%	4.3%	34.74	43.30	1,188,182	1,294,566	19,532
MEDIOBANCA SPA	7.02	2.3%	1.6%	-12.0%	6.1%	10.4%	5.74	8.49	7,041,786	6,329,760	6,048
MEDIOLANUM SPA	5.37	1.2%	-2.9%	-17.1%	-14.4%	-14.8%	4.75	7.19	2,551,961	2,636,662	3,954
MONCLER SPA	11.06	1.9%	-2.1%	-12.7%	n.a.	-30.0%	10.01	16.60	710,382	862,197	2,765
MEDIASET SPA	2.66	-3.0%	-10.5%	-32.9%	-28.4%	-22.7%	2.42	4.45	10,399,960	11,634,690	3,147
PIRELLI & C.	10.68	2.2%	-1.6%	-11.6%	3.3%	-15.1%	9.61	12.99	2,618,406	3,334,210	5,201
BANCA POPOLARE DI MILANO	0.60	-6.9%	-7.3%	-7.5%	38.7%	49.2%	0.36	0.74	123,357,800	95,951,130	2,631
PRYSMIAN SPA	13.80	3.0%	-3.9%	-26.4%	-22.0%	-26.2%	12.34	19.79	1,254,815	1,574,223	2,981
SALVATORE FERRAGAMO SPA	18.84	-3.3%	-11.8%	-17.4%	-24.6%	-31.9%	17.81	29.85	602,167	675,112	3,173
SAIPEM SPA	12.50	-16.3%	-22.6%	-35.2%	-28.5%	-19.7%	12.15	21.00	7,425,741	3,667,189	5,518
SNAM SPA	4.31	3.4%	-0.4%	-0.5%	15.1%	6.0%	3.71	4.58	13,697,720	13,029,270	14,575
STMICROELECTRONICS NV	5.33	-3.3%	-12.4%	-22.7%	-5.7%	-7.8%	4.89	7.42	11,288,620	7,099,836	4,850
TENARIS SA	15.70	2.4%	-11.7%	-2.7%	-9.3%	-1.1%	14.66	18.29	3,043,161	2,921,374	18,534
TELECOM ITALIA SPA	0.9025	7.6%	-0.6%	-2.3%	25.8%	25.2%	0.65	1.01	136,892,900	117,859,200	16,454
TOD'S SPA	73.45	3.1%	-5.5%	-27.2%	-39.5%	-39.5%	66.50	127.60	130,494	166,874	2,248
TERNA SPA	4.02	2.4%	1.8%	3.0%	11.1%	10.6%	3.42	4.14	9,925,381	9,593,641	8,076
UBI BANCA SCPA	6.25	-1.0%	-5.5%	-9.0%	24.5%	26.5%	4.58	7.55	14,169,410	10,818,990	5,631
UNICREDIT SPA	5.76	-2.1%	-8.6%	-10.6%	3.8%	7.1%	5.01	6.89	98,060,830	87,864,440	33,792
UNIPOLSAI SPA	2.14	0.4%	-3.5%	-14.4%	20.6%	-3.4%	1.72	2.72	7,948,975	7,185,071	5,966
WORLD DUTY FREE SPA	6.76	-1.6%	-26.7%	-30.0%	-16.2%	-26.1%	6.05	11.07	2,737,825	3,655,316	1,719
YOOX SPA	14.73	0.9%	-16.4%	-43.0%	-44.8%	-54.8%	13.87	35.09	1,257,205	1,326,342	879

** for FTSE MIB stocks, market cap here reported on overall shares outstanding

Source: Bloomberg LP