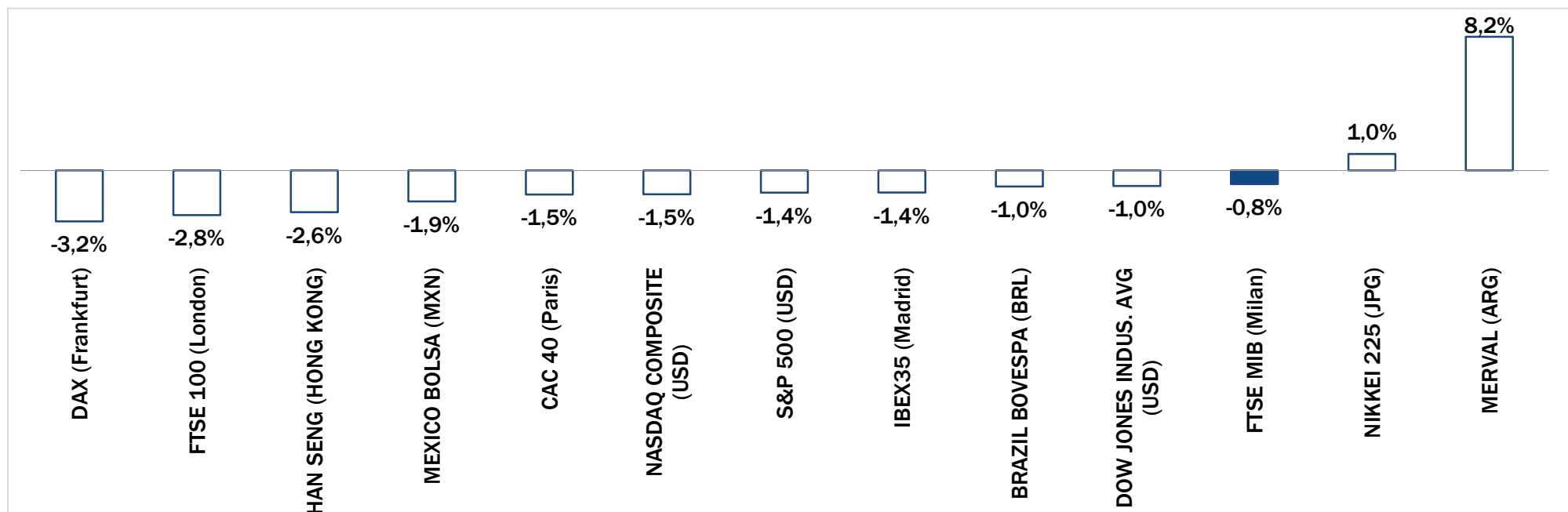


Weekly Stock Market Report for Telecom Italia Retail Shareholders

September 22nd – September 26th, 2014

Weekly Performance Summary of Major Worldwide Market Stock Exchanges



Index Point as of 26-Sep-14	Performance (Δ%)*					Last 52 weeks		Daily average volume **		Market Cap. (mln. local cur.)
	1 week	1 month	6 months	1 year	from Jan. '14	Low Price	High Price	1 week	1 month	

Europe

FTSE MIB (Milan)	20,795	-0.8%	1.7%	-3.3%	17.8%	9.6%	17,200	22,590	685,844,083	595,470,974	427,809
FTSE 100 (London)	6,649	-2.8%	-2.5%	0.5%	2.1%	-1.5%	6,317	6,905	772,199,066	630,836,649	1,814,507
DAX (Frankfurt)	9,491	-3.2%	0.2%	-1.0%	9.6%	-0.6%	8,490	10,051	85,941,806	73,461,743	933,158
CAC 40 (Paris)	4,395	-1.5%	0.3%	-0.4%	5.0%	2.3%	4,051	4,599	102,165,440	95,407,678	1,182,020
IBEX35 (Madrid)	10,851	-1.4%	1.1%	5.1%	17.6%	9.4%	9,037	11,249	312,944,890	288,092,032	569,373

America

DOW JONES INDUS. AVG (USD)	17,113	-1.0%	0.1%	4.8%	12.2%	3.2%	14,719	17,351	80,025,107	81,503,312	4,941,214
S&P 500 (USD)	1,983	-1.4%	-1.0%	6.7%	17.2%	7.3%	1,646	2,019	481,676,294	460,207,730	18,170,962
NASDAQ COMPOSITE (USD)	4,512	-1.5%	-1.5%	8.6%	19.3%	8.0%	3,650	4,611	455,073,062	439,905,296	6,815,179
MEXICO BOLSA (MXN)	44,884	-1.9%	-1.6%	12.1%	9.7%	5.0%	37,752	46,554	174,463,552	173,391,289	2,242,990
MERVAL (ARG)	12,536	8.2%	27.7%	102.2%	165.0%	132.5%	4,622	12,536	17,377,316	16,497,174	12,534
BRAZIL BOVESPA (BRL)	57,212	-1.0%	-6.7%	15.0%	6.5%	11.1%	44,905	62,305	316,156,595	369,220,477	1,893,946

Asia

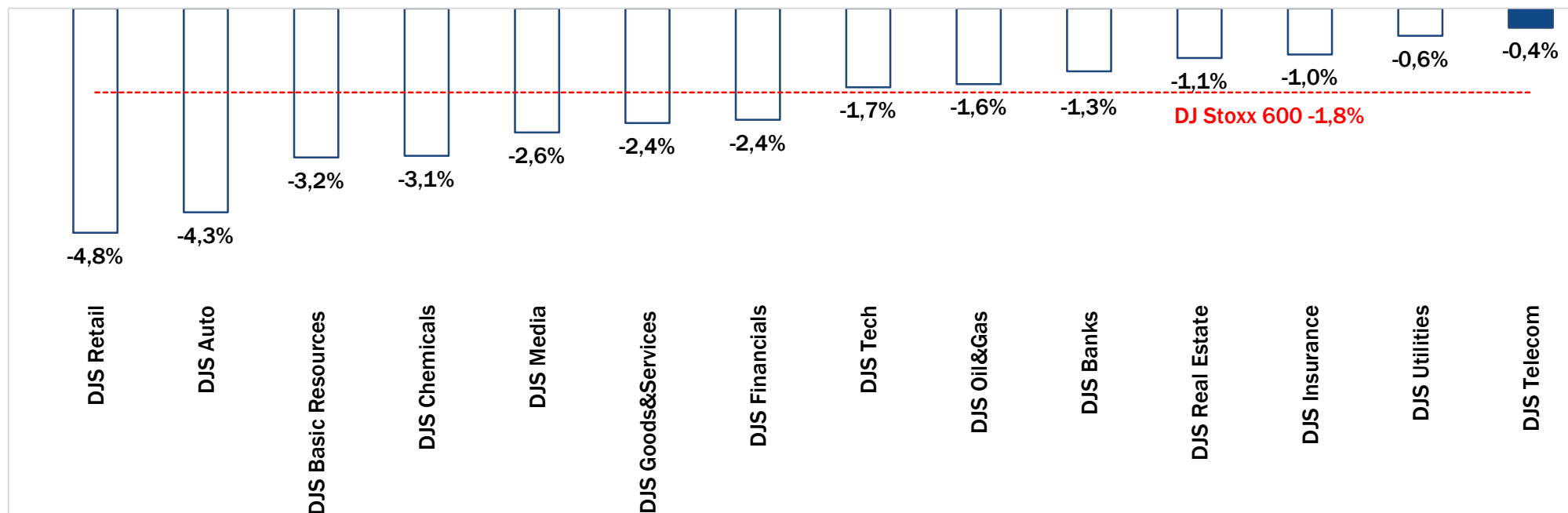
NIKKEI 225 (JPG)	16,230	1.0%	5.2%	10.4%	10.0%	-0.4%	13,749	16,374	1,419,706,496	1,138,743,968	306,635,552
HAN SENG (HONG KONG)	23,678	-2.6%	-4.3%	7.3%	2.0%	1.6%	21,138	25,363	1,484,897,126	1,530,543,339	14,507,081

* performance calculated on closing price

Source: Bloomberg LP

NB: Weekly performances are referred to last 5 open market sessions.

Weekly Performance Summary of Major European Sectors



Index	Index Point as of 26-Sep-14	Performance (Δ%)*					Last 52 weeks		Daily average volume **		Market Cap. (mln. local cur.)
		1 week	1 month	6 months	1 year	from Jan. '14	Low Price	High Price	1 week	1 month	
DJ Stoxx 600	342.3	-1.8%	0.1%	2.6%	9.6%	4.3%	304.45	350.85	2,732,897,229	2,484,633,937	8,749,625.00

Sectors

Sector	Index Point	1 week	1 month	6 months	1 year	from Jan. '14	Low Price	High Price	Daily average volume (1 week)	Daily average volume (1 month)	Market Cap.
DJS Telecom	301.68	-0.4%	1.2%	2.9%	9.5%	1.4%	272.85	310.37	290,034,573	256,092,963	419,066.09
DJS Auto	460.94	-4.3%	-3.4%	-11.5%	3.4%	-4.4%	433.17	536.66	43,785,208	32,301,298	260,955.23
DJS Banks	201.48	-1.3%	2.2%	1.7%	9.2%	3.7%	181.54	209.5	1,211,935,117	1,206,641,033	1,246,926.63
DJS Basic Resources	407.09	-3.2%	-4.7%	0.7%	2.2%	1.6%	369.17	455.43	96,601,272	76,150,348	295,459.06
DJS Chemicals	755.39	-3.1%	-0.5%	0.5%	6.5%	-0.3%	678.59	793.87	16,961,347	13,611,889	367,449.19
DJS Oil&Gas	345.47	-1.6%	-2.9%	2.6%	6.6%	3.1%	311.13	381.9	137,360,478	107,813,549	665,359.13
DJS Financials	346.73	-2.4%	-2.6%	0.2%	11.6%	0.9%	302.7	368.62	33,933,271	27,244,226	144,638.52
DJS Goods&Services	399.65	-2.4%	-1.4%	-3.6%	1.4%	-3.4%	380.82	425.9	159,332,986	129,184,286	890,830.88
DJS Insurance	241.29	-1.0%	3.0%	6.9%	18.5%	5.7%	200.23	245	108,359,763	106,212,317	484,443.25
DJS Media	252.12	-2.6%	-0.2%	1.6%	8.1%	-0.7%	228.93	260.77	47,911,668	45,474,110	227,673.27
DJS Tech	296.65	-1.7%	0.6%	2.8%	6.3%	2.1%	265.74	305.74	72,854,826	72,619,720	269,234.13
DJS Utilities	321.75	-0.6%	1.0%	4.4%	18.2%	15.6%	265.76	328.18	136,161,632	123,014,370	481,118.78
DJS Retail	292.55	-4.8%	-3.7%	-8.0%	-8.8%	-10.0%	290.81	333.73	171,889,682	103,029,413	300,908.72
DJS Real Estate	152.84	-1.1%	-2.0%	6.8%	15.3%	12.2%	129.09	157.6	21,283,543	16,141,880	119,137.88

* performance calculated on closing price

** n. of traded shares

Source: Bloomberg LP

NB: Weekly performances are referred to last 5 open market sessions.

Europe: Stock Performance of Main TLC Operators

Last Week Performance

2014 Year-To-Date Performance

Last 1 Year Performance

Telecom Italia Ord.	4,1%
Telecom Italia Sav.	1,9%
TEF Deutschland	0,8%
TDC	0,7%
Teliasonera	0,5%
Elisa	0,3%
Telefonica	0,3%
Swisscom	0,2%
Vodafone Group	0,1%
Ziggo	0,1%
Jazztel	0,0%
Telekom Austria	-0,2%
Orange	-0,3%
DJStoxx Telecom	-0,4%
KPN	-0,5%
Belgacom	-0,5%
Iliad	-0,6%
Talk Talk	-0,7%
Tele2	-1,0%
Deutsche Telekom	-1,1%
Telenor	-1,2%
Vivendi	-1,6%
Freenet	-2,5%
Inmarsat	-3,1%
British Telecom	-3,6%
C&W Comm.	-4,0%
Portugal Telecom	-4,5%
OTE	-8,4%

Jazztel	64,2%
Telecom Italia Sav.	30,3%
Telekom Austria	29,6%
Telecom Italia Ord.	29,1%
Orange	28,4%
Belgacom	27,4%
Tele2	20,5%
Swisscom	15,1%
Iliad	13,2%
Ziggo	11,9%
OTE	9,9%
Elisa	9,5%
KPN	6,1%
Vivendi	5,4%
Telefonica	3,9%
DJStoxx Telecom	1,4%
British Telecom	1,1%
Telenor	-1,1%
Talk Talk	-2,9%
Deutsche Telekom	-3,8%
TEF Deutschland	-3,9%
Freenet	-4,8%
Inmarsat	-5,7%
Teliasonera	-6,0%
TDC	-14,4%
Vodafone Group	-15,0%
C&W Comm.	-15,6%
Portugal Telecom	-46,5%

Telecom Italia Ord.	60,4%
Telecom Italia Sav.	57,2%
Jazztel	55,7%
Belgacom	38,0%
OTE	31,2%
Swisscom	23,9%
Orange	22,9%
Ziggo	22,5%
Talk Talk	21,9%
C&W Comm.	21,1%
Elisa	17,9%
Vivendi	17,8%
Telekom Austria	17,2%
Freenet	16,2%
Deutsche Telekom	10,9%
British Telecom	10,7%
DJStoxx Telecom	9,5%
Telefonica	6,5%
Tele2	5,4%
KPN	5,1%
Telenor	2,8%
Teliasonera	1,7%
Inmarsat	0,1%
Iliad	-1,9%
TEF Deutschland	-2,6%
TDC	-4,0%
Vodafone Group	-7,2%
Portugal Telecom	-49,9%

Performance Summary of Main European TLC Operators

Cl. Price (local currency) 26-Sep-14	Performance ($\Delta\%$)*					Last 52 weeks		Daily average volume **		Market Cap. (all in €mln)
	1 week	1 month	6 months	1 year	from Jan. '14	Low Price	High Price	1 week	1 month	

EUROPE

Index

DJStoxx Telecom	301.68	-0.4%	1.2%	2.9%	9.5%	1.4%	272.85	310.37	290,034,573	256,092,963
-----------------	--------	-------	------	------	------	------	--------	--------	-------------	-------------

TLC Operators

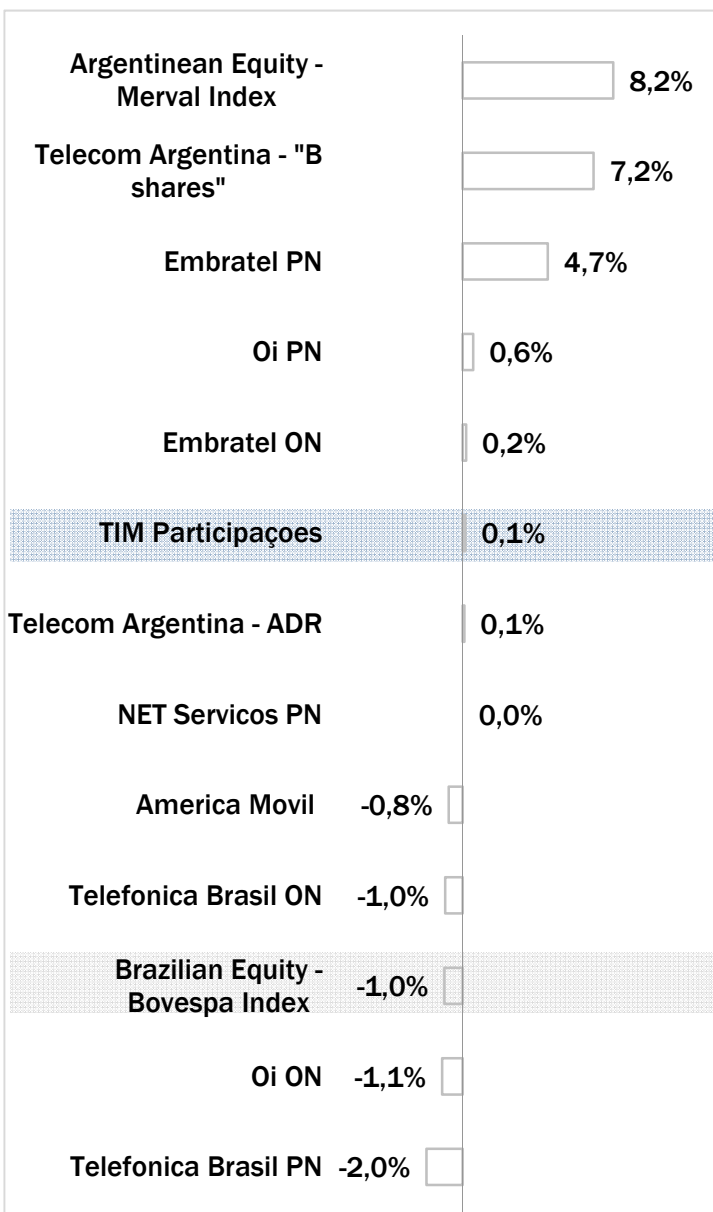
Telecom Italia Ord.	0.931	4.1%	7.9%	10.9%	60.4%	29.1%	0.577	1.012	127,249,200	101,447,500	12,535
Telecom Italia Sav.	0.717	1.9%	5.0%	10.6%	57.2%	30.3%	0.451	0.792	18,271,560	15,980,070	4,321
Altice	41.55	-3.7%	-12.6%	29.0%	n.a.	n.a.	25.505	57.010	68,473	85,385	10,293
Belgacom	27.40	-0.5%	1.5%	21.2%	38.0%	27.4%	19.460	27.790	563,439	578,139	9,262
British Telecom	383.60	-3.6%	0.2%	1.0%	10.7%	1.1%	339.100	421.200	11,703,080	14,845,840	39,971
C&W Comm.	47.49	-4.0%	-4.6%	-9.5%	21.1%	-15.6%	38.710	58.500	8,056,177	5,616,324	1,537
Deutsche Telekom	11.96	-1.1%	3.7%	3.2%	10.9%	-3.8%	10.455	13.150	10,090,470	9,106,101	54,245
Elisa	21.09	0.3%	0.0%	2.1%	17.9%	9.5%	17.260	22.850	291,658	320,870	3,529
Freenet	20.74	-2.5%	0.1%	-17.4%	16.2%	-4.8%	17.375	25.960	436,550	423,162	2,655
Orange	11.56	-0.3%	-0.5%	10.8%	22.9%	28.4%	8.388	12.850	5,673,567	6,510,454	30,621
OTE	10.63	-8.4%	-2.5%	-12.5%	31.2%	9.9%	7.600	13.200	755,182	672,237	5,210
Iliad	168.60	-0.6%	-0.6%	-18.9%	-1.9%	13.2%	144.850	247.400	73,375	134,732	9,792
Inmarsat	713.00	-3.1%	1.5%	-2.1%	0.1%	-5.7%	636.000	774.500	780,638	686,414	4,092
Jazztel	12.77	0.0%	29.0%	16.8%	55.7%	64.2%	7.210	12.840	6,585,077	5,048,356	3,274
KPN	2.49	-0.5%	-1.3%	-0.1%	5.1%	6.1%	2.180	2.805	10,419,520	9,097,629	10,612
TEF Deutschland	4.21	0.8%	-8.8%	0.9%	-2.6%	-3.9%	3.884	5.052	5,798,398	4,838,389	9,414
Portugal Telecom	1.69	-4.5%	8.8%	-44.1%	-49.9%	-46.5%	1.322	4.175	8,449,263	10,300,810	1,515
Swisscom	542.00	0.2%	1.5%	1.2%	23.9%	15.1%	426.600	548.500	88,761	82,696	23,267
Talk Talk	297.00	-0.7%	-2.0%	-7.9%	21.9%	-2.9%	238.700	334.300	849,637	951,016	3,631
TDC	45.00	0.7%	-7.8%	-7.5%	-4.0%	-14.4%	40.400	57.700	2,639,875	3,017,572	4,909
Telefonica	12.30	0.3%	1.4%	9.8%	6.5%	3.9%	10.835	13.135	25,454,730	24,284,960	55,978
Telenor	143.00	-1.2%	0.3%	7.0%	2.8%	-1.1%	123.900	153.800	1,127,902	1,083,105	26,216
Tele2	87.80	-1.0%	1.1%	10.4%	5.4%	20.5%	68.750	89.850	1,522,558	1,341,603	4,246
Telekom Austria	7.14	-0.2%	-0.2%	-1.4%	17.2%	29.6%	5.310	7.595	342,334	489,137	3,161
Teliasonera	50.35	0.5%	-1.7%	4.5%	1.7%	-6.0%	43.980	54.900	8,387,782	6,737,231	23,649
Vivendi	19.14	-1.6%	-5.2%	1.3%	17.8%	5.4%	15.953	20.290	4,067,954	4,079,188	25,811
Vodafone Group	204.95	0.1%	-1.3%	-6.0%	-7.2%	-15.0%	187.350	252.300	60,752,500	52,430,100	69,524
Ziggo	37.15	0.1%	3.8%	17.3%	22.5%	11.9%	28.565	37.520	382,594	534,922	7,429

* performance calculated on closing price ** n. of traded shares

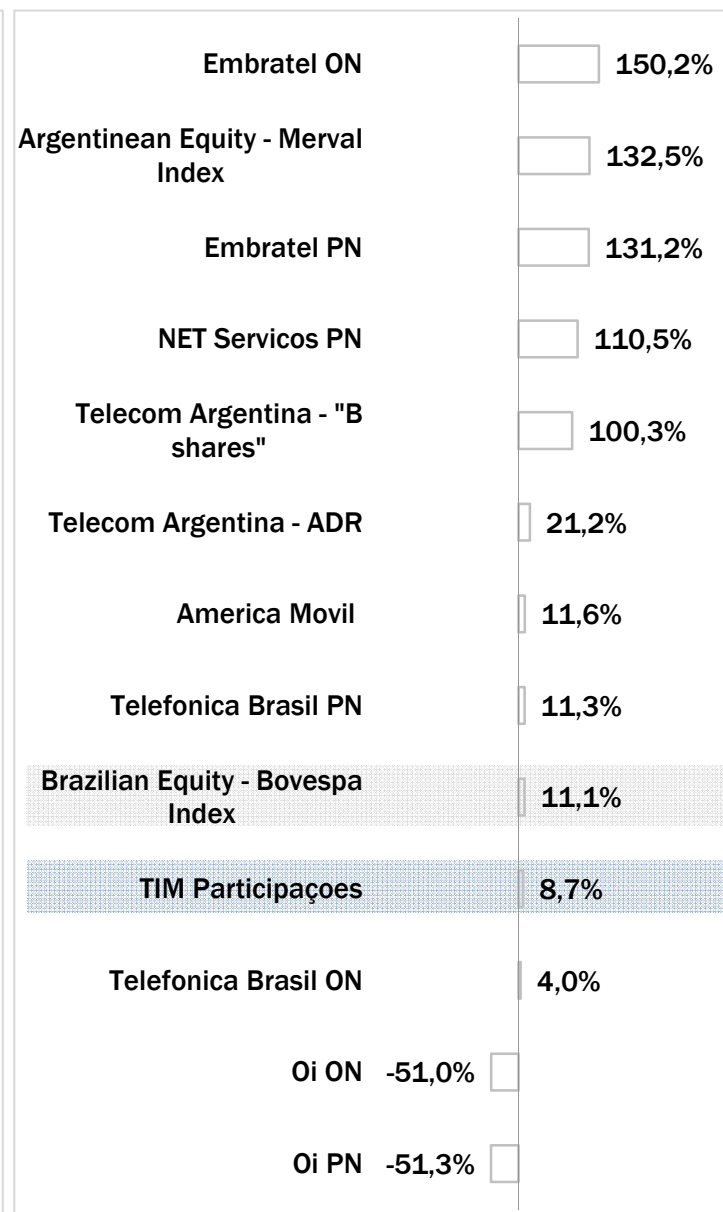
Source: Bloomberg LP

Brazil: Stock Performance of Main TLC Operators

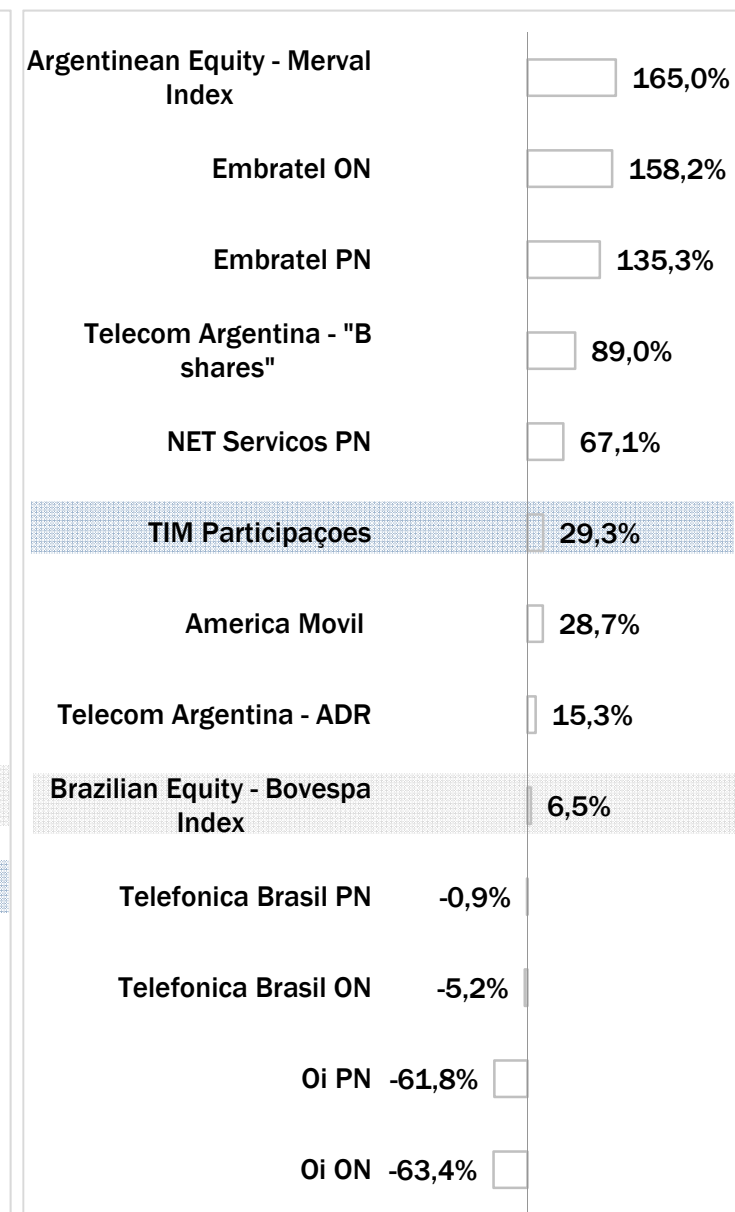
Last Week Performance



2014 Year-To-Date Performance



Last 1 Year Performance



Performance Summary of Main LatAm TLC Operators

Cl. Price 26-Sep-14	Performance (Δ%)*					Last 52 weeks		Daily average volume **		Market Cap. (mln)***
	1 week	1 month	6 months	1 year	from Jan. '14	Low Price	High Price	1 week	1 month	

BRAZIL

Index

Brazilian Equity - Bovespa Index	R\$ 57,212.38	-1.0%	-6.7%	15.0%	6.5%	11.1%	44,904.83	62,304.88	316,156,595	369,220,477	R\$ 1,893,946
----------------------------------	---------------	-------	-------	-------	------	-------	-----------	-----------	-------------	-------------	---------------

Peers

TIM Participações	R\$ 13.40	0.1%	5.3%	14.5%	29.3%	8.7%	R\$ 10.15	R\$ 14.09	4,820,740	4,511,620	R\$ 32,430
--------------------------	------------------	-------------	-------------	--------------	--------------	-------------	------------------	------------------	------------------	------------------	-------------------

Oi ON	R\$ 1.77	-1.1%	18.8%	-44.7%	-63.4%	-51.0%	R\$ 1.22	R\$ 4.98	6,155,780	5,735,337	R\$ 5,065
Oi PN	R\$ 1.75	0.6%	22.4%	-45.0%	-61.8%	-51.3%	R\$ 1.17	R\$ 4.76	28,767,760	45,547,060	R\$ 10,016
Telefonica Brasil ON	R\$ 41.59	-1.0%	7.2%	2.8%	-5.2%	4.0%	R\$ 36.49	R\$ 44.54	15,580	35,337	R\$ 15,870
Telefonica Brasil PN	R\$ 49.90	-2.0%	11.5%	6.3%	-0.9%	11.3%	R\$ 41.66	R\$ 52.38	1,017,800	1,205,013	R\$ 37,126
Embratel ON	R\$ 20.99	0.2%	33.1%	162.4%	158.2%	150.2%	R\$ 6.60	R\$ 23.88	800	720	R\$ 13,396
Embratel PN	R\$ 20.00	4.7%	25.0%	150.0%	135.3%	131.2%	R\$ 6.70	R\$ 23.50	300	13,093	R\$ 11,863
NET Servicos PN	R\$ 47.00	0.0%	5.6%	69.4%	67.1%	110.5%	R\$ 18.98	R\$ 63.85	580	1,793	R\$ 11,734

ARGENTINA

Index

Argentinean Equity - Merval Index	12,535.53	8.2%	27.7%	102.2%	165.0%	132.5%	4,621.57	12,535.53	580	1,793	ARS 1,724,551
-----------------------------------	-----------	------	-------	--------	--------	--------	----------	-----------	-----	-------	---------------

Integrated

Telecom Argentina - "B shares"	ARS 62.10	7.2%	26.7%	78.2%	89.0%	100.3%	ARS 27.40	ARS 62.50	170,389	106,538	ARS 61,130
Telecom Argentina - ADR	\$20.90	0.1%	11.7%	18.1%	15.3%	21.2%	\$13.93	\$25.56	214,778	135,806	\$4,115

Nortel Inversora B shares - ADR	\$22.28	1.0%	7.2%	26.2%	15.4%	12.0%	\$15.84	\$26.37	2,937	4,646	\$3,030
---------------------------------	---------	------	------	-------	-------	-------	---------	---------	-------	-------	---------

MEXICO

Index

Mexican Equity - Mexbol Index	44,884.33	-1.9%	-1.6%	12.1%	9.7%	5.0%	37,751.64	46,554.28	174,463,552	173,391,289	MXN 5,021,517
-------------------------------	-----------	-------	-------	-------	------	------	-----------	-----------	-------------	-------------	---------------

Mobile/Integrated

America Movil	MXN 16.99	-0.8%	7.2%	33.8%	28.7%	11.6%	MXN 12.39	MXN 17.64	50,500,860	58,720,910	MXN 1,171,718
---------------	-----------	-------	------	-------	-------	-------	-----------	-----------	------------	------------	---------------

TV

Grupo Televisa	MXN 91.31	-2.4%	-6.0%	6.8%	24.3%	16.0%	MXN 72.21	MXN 99.21	2,834,269	2,778,602	MXN 264,078
----------------	-----------	-------	-------	------	-------	-------	-----------	-----------	-----------	-----------	-------------

* performance calculated on closing price

** n. of traded shares

*** For Telecom Argentina, reported market capitalization represents estimated market capitalization of all Classes of Shares (A,B,C - of which only Class B is listed).



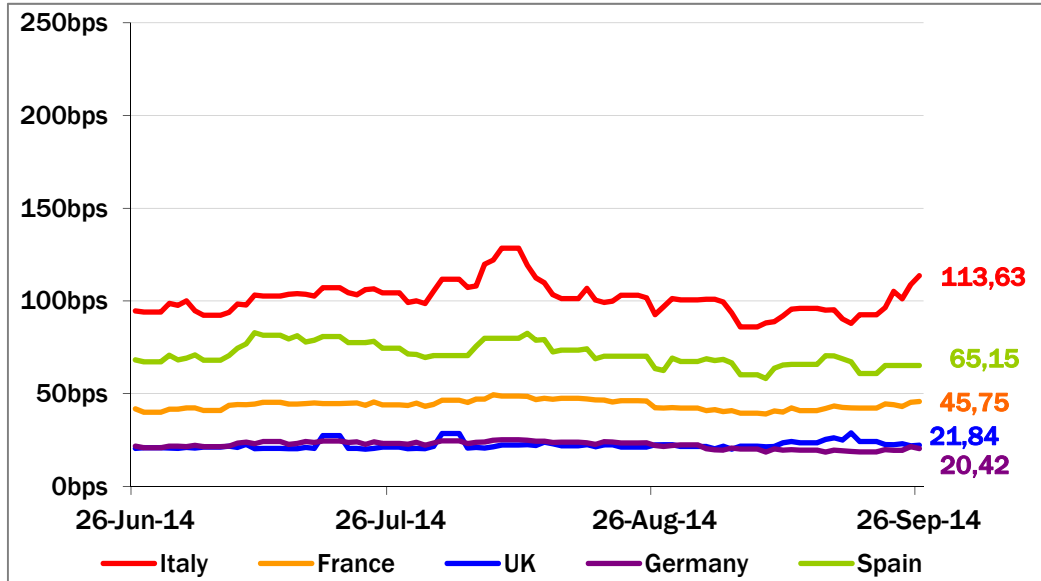
European Telecoms Sector: Credit Outlook

Long-term Credit Ratings

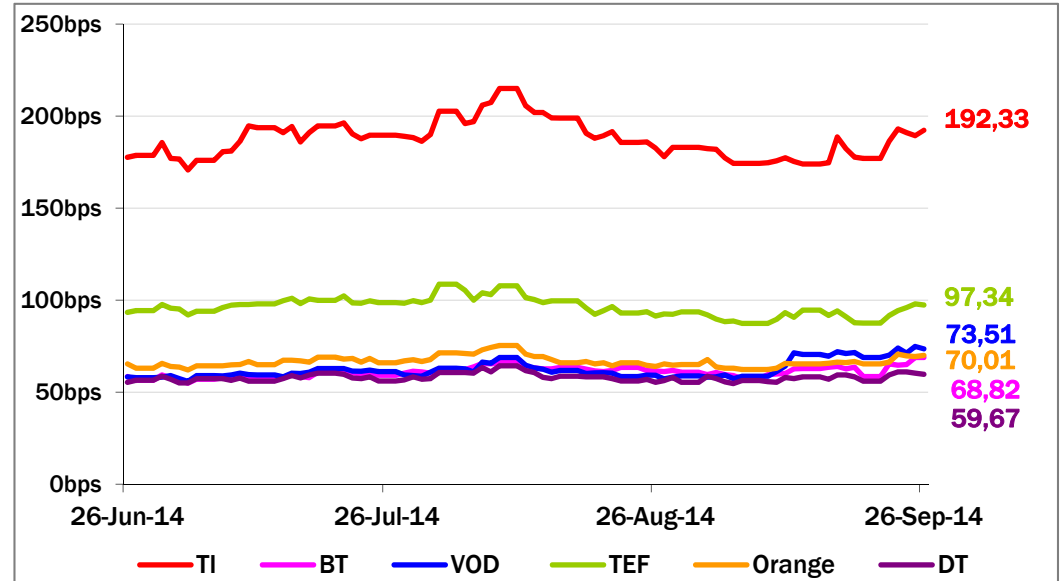
	Moody's		S&P		Fitch	
	rating	outlook	rating	outlook	rating	outlook
Telecom Italia	Ba1	NEG	BB+	NEG	BBB-	NEG
Belgacom	A1	STABLE	A	STABLE	n.a.	n.a.
British Telecom	Baa2	POS	BBB	STABLE	BBB	POS
Deutsche Telekom	Baa1	STABLE	BBB+	STABLE	BBB+	STABLE
Orange	Baa1	STABLE	BBB+	NEG	BBB+	NEG
KPN	Baa3	STABLE	BBB-	STABLE	BBB-	STABLE
Oi	Ba1	NEG	BB+	STABLE	BB+	STABLE
Swisscom	A2	STABLE	A	STABLE	n.a.	n.a.
Telefonica	Baa2	NEG	BBB	STABLE	BBB+	NEG
Telekom Austria	Baa2	STABLE	BBB	STABLE	n.a.	n.a.
Telenor	A3	STABLE	A-	POS	A-	STABLE
Telia Sonera	A3	STABLE	A-	STABLE	A-	STABLE
Vodafone	Baa1	STABLE	A-	NEG	BBB+	STABLE
Wind Telecomunicazioni SpA	B2	STABLE	BB-	STABLE	B+	STABLE
Vimpelcom	Ba3	STABLE	BB	POS	n.a.	n.a.

5 Years CDS levels

Countries



TLC Operators





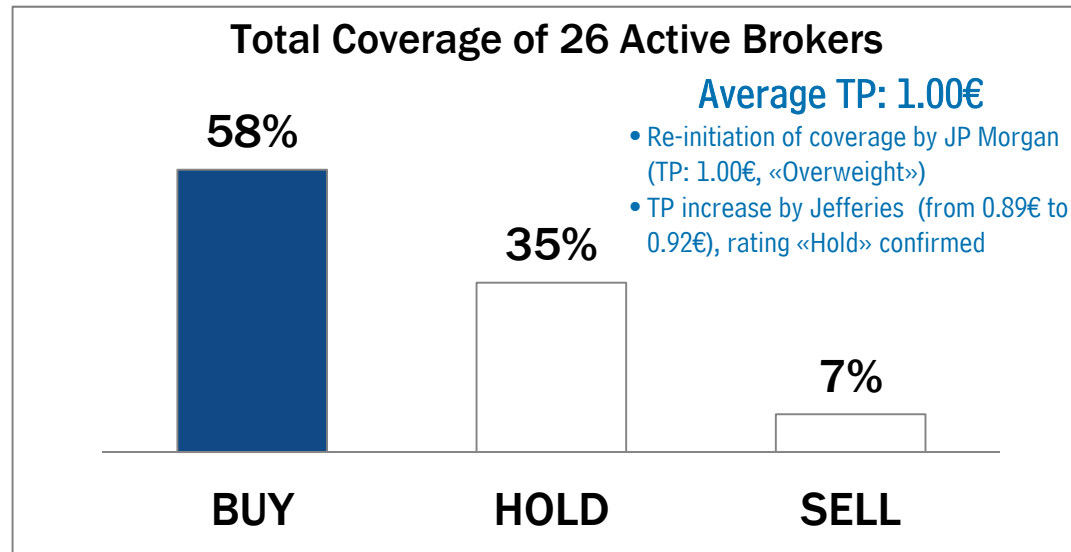
Telecom Italia Group – Weekly Performance: Price (€) and Volumes (mln)

TI Ordinary Shares

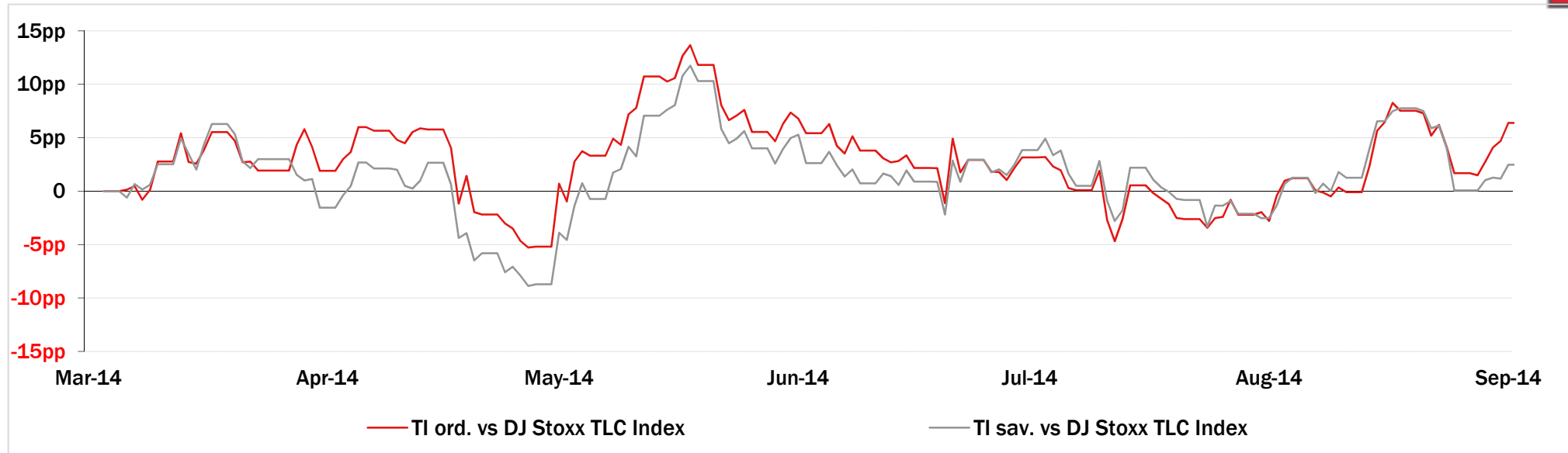
TI Saving Shares



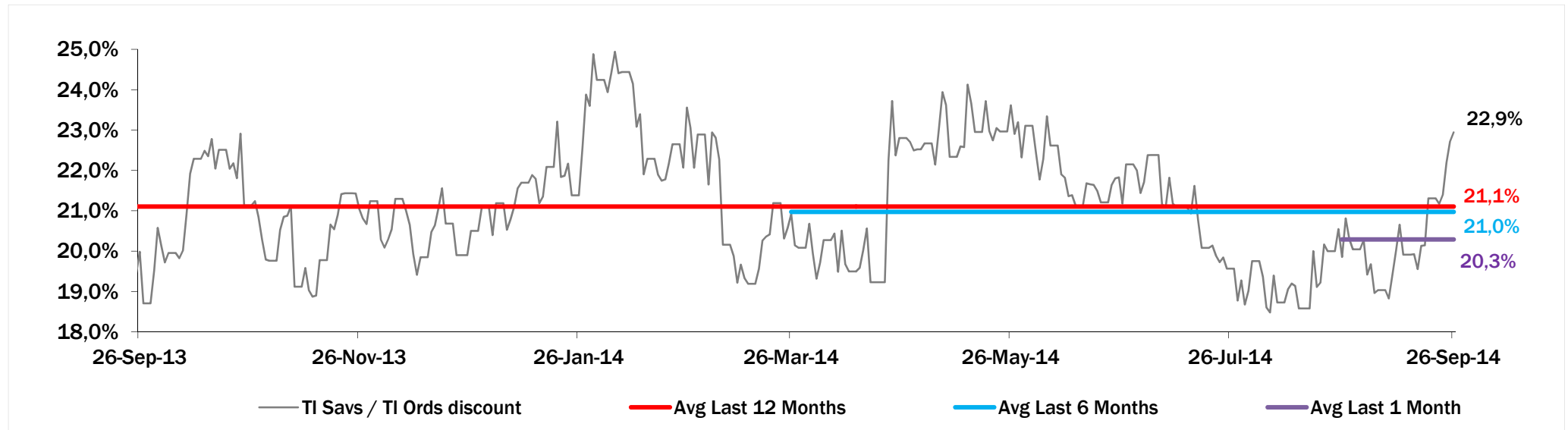
Analysts' Recommendations on TI Ords.



Relative Performance Last 6 Months of Telecom Italia Shares vs TLC Sector



Evolution of the spread between Telecom Italia shares (TI Savs / TI Ords) in the last 12 months



Performance Summary of FTSE MIB



Index	Cl. Price € 26-Sep-14	Performance (Δ%)*					Last 52 weeks		Daily average volume		Market** Cap. mil. Euro
		1 week	1 month	6 months	1 year	from Jan. '14	Low Price	High Price	1 week	1 month	
FTSE MIB (Milan)	20,795	-0.8%	1.7%	-3.3%	17.8%	9.6%	17,200	22,590	685,844,083	595,470,974	427,809
FTSE Italia All-Share (Milan)	21,938	-1.1%	1.0%	-4.3%	17.4%	8.6%	18,224	23,913	863,721,728	796,162,710	510,583
Stocks FTSE MIB											
A2A SPA	0.79	-0.8%	-6.5%	-15.7%	6.2%	-7.6%	0.70	1.03	16,771,510	14,807,340	2,462
ANSALDO STS SPA	8.82	0.7%	10.8%	16.4%	42.1%	24.8%	5.95	9.05	946,571	1,252,208	1,763
ASSICURAZIONI GENERALI	16.56	0.4%	5.1%	2.9%	10.7%	-3.2%	14.54	17.70	6,422,800	5,526,991	25,782
ATLANTIA SPA	19.09	-1.8%	-0.8%	1.5%	24.4%	17.0%	14.94	21.50	2,226,658	1,873,204	15,764
AUTOGRILL SPA	6.34	-0.5%	-1.8%	-13.9%	11.9%	3.3%	5.49	7.77	1,308,202	1,089,901	1,613
AZIMUT HOLDING SPA	20.34	-2.6%	1.2%	-17.3%	24.3%	5.8%	15.85	25.92	802,274	964,747	2,914
BANCA MONTE DEI PASCHI SIENA	1.03	-2.5%	-11.4%	-31.8%	-19.6%	-5.8%	0.94	2.73	72,849,220	67,922,980	5,280
BANCA POPOL EMILIA ROMAGNA	6.17	-1.5%	-7.0%	-19.9%	23.9%	-2.1%	4.72	8.87	3,850,665	3,509,956	2,960
BANCA POPOLARE DI MILANO	0.64	1.1%	3.5%	6.0%	72.0%	59.8%	0.35	0.74	88,492,660	66,483,160	2,817
BANCO POPOLARE SC	11.47	-7.9%	-7.0%	-10.0%	33.9%	8.7%	8.10	16.41	5,249,492	3,726,080	4,154
BUZZI UNICEM SPA	10.41	-6.6%	-13.5%	-21.3%	-10.6%	-20.6%	10.03	15.20	1,491,468	794,691	1,984
CNH INDUSTRIAL NV	6.27	0.7%	-6.4%	-22.3%	n.a.	-24.3%	5.92	9.86	5,416,059	3,700,425	8,485
DAVIDE CAMPARI-MILANO SPA	5.64	-2.8%	-4.4%	-4.3%	-11.9%	-7.3%	5.57	6.61	1,394,307	1,009,544	3,273
ENEL GREEN POWER SPA	2.01	-2.2%	-4.4%	-0.8%	24.9%	10.0%	1.58	2.19	6,867,263	5,784,949	10,070
ENEL SPA	4.19	0.5%	1.5%	3.1%	45.8%	32.0%	2.78	4.49	32,299,970	29,431,000	39,400
ENI SPA	18.55	-2.4%	-2.8%	3.6%	8.4%	6.1%	16.20	20.46	28,328,950	18,111,990	67,414
EXOR SPA	30.87	-0.4%	1.9%	-3.6%	10.9%	6.8%	26.62	33.48	337,476	315,781	7,601
FIAT SPA	8.05	3.4%	6.3%	-0.3%	34.8%	35.3%	5.17	9.08	19,728,550	12,973,030	10,064
FINMECCANICA SPA	7.59	-0.5%	5.2%	6.7%	66.9%	37.8%	4.38	7.89	5,424,039	4,143,308	4,385
GTECH SPA	18.78	1.0%	3.4%	-15.1%	-9.5%	-15.3%	15.24	24.13	519,534	486,186	3,286
INTESA SANPAOLO	2.43	0.4%	4.1%	4.7%	53.6%	35.3%	1.49	2.66	132,042,900	134,958,500	39,645
LUXOTTICA GROUP SPA	40.63	1.5%	1.5%	-2.8%	3.1%	4.3%	35.22	43.30	611,302	838,041	19,532
MEDIASET SPA	3.03	-6.2%	-5.5%	-25.5%	-3.5%	-12.0%	2.76	4.45	9,822,635	9,030,916	3,581
MEDIOBANCA SPA	6.77	-4.5%	-1.8%	-14.4%	28.2%	6.4%	5.02	8.49	5,953,274	4,770,075	5,832
MEDIOLANUM SPA	5.67	-0.6%	-2.9%	-17.2%	3.5%	-10.1%	5.12	7.19	1,426,319	1,652,856	4,175
PIRELLI & C.	10.90	-7.0%	-7.5%	-2.9%	10.5%	-13.4%	9.28	12.99	2,919,396	2,152,333	5,312
PRYSMIAN SPA	14.33	-5.2%	-8.9%	-20.3%	-22.1%	-23.4%	14.04	19.79	1,401,398	987,076	3,075
SAIPEM SPA	16.50	-1.1%	-8.7%	-2.6%	2.1%	6.0%	14.81	21.00	1,945,542	1,601,055	7,283
SALVATORE FERRAGAMO SPA	22.42	0.8%	8.8%	5.6%	-12.2%	-18.9%	18.96	29.85	482,612	560,510	3,776
SNAM SPA	4.37	-0.3%	-1.8%	5.0%	17.1%	7.4%	3.68	4.58	9,137,158	7,606,639	14,764
STMICROELECTRONICS NV	6.00	-2.7%	-5.4%	-11.8%	-14.2%	3.9%	5.26	7.42	4,999,928	4,759,345	5,464
TELECOM ITALIA SPA	0.931	4.1%	7.9%	10.9%	60.4%	29.1%	0.58	1.01	127,249,200	101,447,500	16,855
TENARIS SA	18.15	-0.2%	7.5%	14.9%	5.3%	14.3%	14.78	18.29	1,942,041	1,523,522	21,427
TERNA SPA	3.95	0.7%	-0.1%	2.5%	17.9%	8.7%	3.28	4.14	6,271,115	6,628,699	7,935
TOD'S SPA	80.45	-5.9%	-5.5%	-13.8%	-41.1%	-33.7%	75.00	140.10	146,828	136,365	2,463
UNICREDIT SPA	6.21	-1.4%	2.0%	-4.2%	30.1%	15.4%	4.54	6.89	63,090,840	57,923,060	36,431
UBI BANCA SCPA	6.48	-0.4%	4.4%	-0.5%	66.2%	31.3%	3.64	7.55	7,923,134	8,132,818	5,843
UNIPOLSAI SPA	2.32	-2.6%	-3.6%	-13.0%	51.7%	4.7%	1.45	2.72	5,943,127	5,573,775	6,452
WORLD DUTY FREE SPA	8.89	-1.5%	-2.2%	-11.7%	n.a.	-2.7%	6.80	11.07	585,650	877,413	2,263
YOOX SPA	17.93	-1.2%	-11.8%	-29.7%	-30.5%	-45.0%	16.38	35.09	1,213,170	854,648	1,061

** for FTSE MIB stocks, market cap here reported on overall shares outstanding

Source: Bloomberg LP