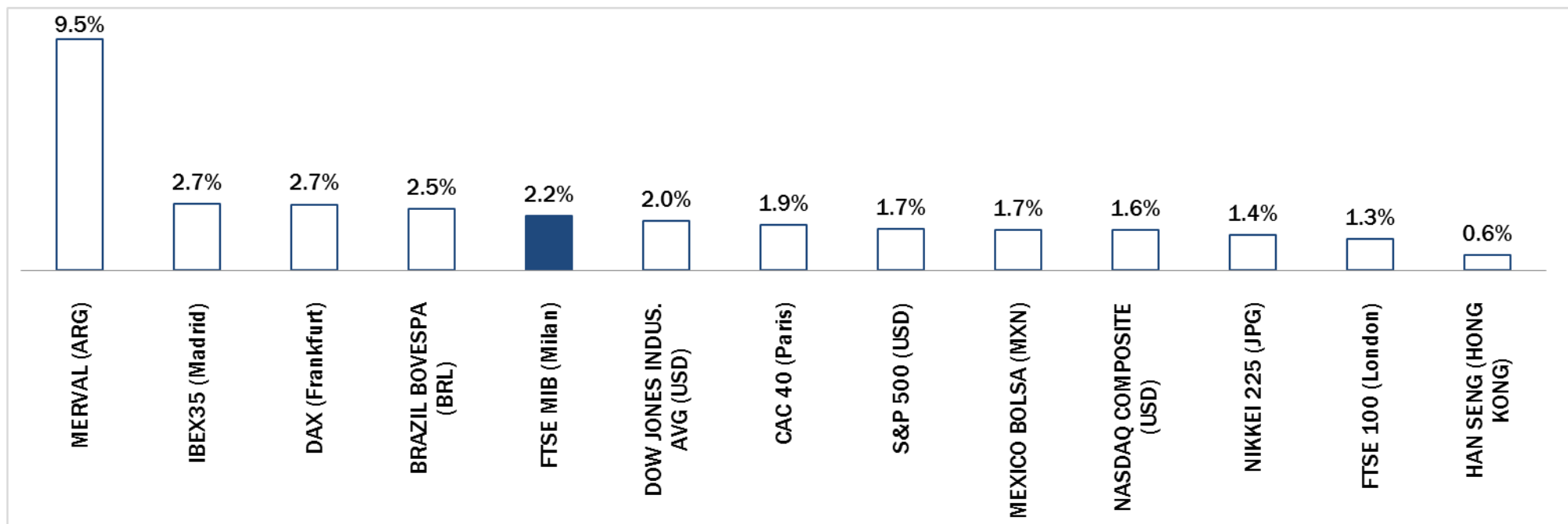


Weekly Stock Market Report for Telecom Italia Retail Shareholders

August 18th – August 22nd, 2014

Weekly Performance Summary of Major Worldwide Market Stock Exchanges



Index Point as of 22-Aug-14	Performance (Δ%)*					Last 52 weeks		Daily average volume **		Market Cap. (mln. local cur.)
	1 week	1 month	6 months	1 year	from Jan. '14	Low Price	High Price	1 week	1 month	

Europe

FTSE MIB (Milan)	19,918	2.2%	-5.4%	-2.7%	14.9%	5.0%	16,504	22,590	454,181,094	605,210,884	410,565
FTSE 100 (London)	6,775	1.3%	-0.2%	-0.8%	4.4%	0.4%	6,317	6,895	472,483,354	578,114,270	1,848,829
DAX (Frankfurt)	9,339	2.7%	-3.2%	-3.7%	11.0%	-2.2%	8,094	10,051	64,551,294	81,205,307	919,570
CAC 40 (Paris)	4,253	1.9%	-1.8%	-3.7%	4.5%	-1.0%	3,928	4,599	77,403,516	107,595,813	1,143,092
IBEX35 (Madrid)	10,500	2.7%	-3.6%	2.5%	20.9%	5.9%	8,276	11,249	201,447,085	315,582,275	550,975

America

DOW JONES INDUS. AVG (USD)	17,001	2.0%	0.2%	5.1%	13.3%	2.6%	14,719	17,152	66,882,077	78,056,051	4,911,527
S&P 500 (USD)	1,988	1.7%	0.5%	7.8%	19.5%	7.6%	1,627	1,995	393,459,654	457,468,879	18,219,364
NASDAQ COMPOSITE (USD)	4,539	1.6%	2.0%	5.9%	24.1%	8.7%	3,574	4,547	362,670,214	431,593,185	6,867,718
MEXICO BOLSA (MXN)	45,375	1.7%	2.2%	16.3%	10.9%	6.2%	37,752	45,517	163,908,637	157,575,753	2,469,006
Merval (ARG)	9,171	9.5%	15.8%	56.7%	135.0%	70.1%	3,829	9,171	15,012,133	11,394,832	9,170
Brazil BOVESPA (BRL)	58,407	2.5%	1.0%	25.0%	11.9%	13.4%	44,905	59,207	314,052,966	323,556,490	1,926,025

Asia

NIKKEI 225 (JPG)	15,539	1.4%	0.5%	3.2%	13.8%	-4.6%	13,188	16,320	968,502,566	1,125,745,050	295,713,600
HAN SENG (HONG KONG)	25,112	0.6%	3.7%	12.5%	14.9%	7.7%	21,138	25,201	1,325,892,941	1,419,623,211	15,075,463

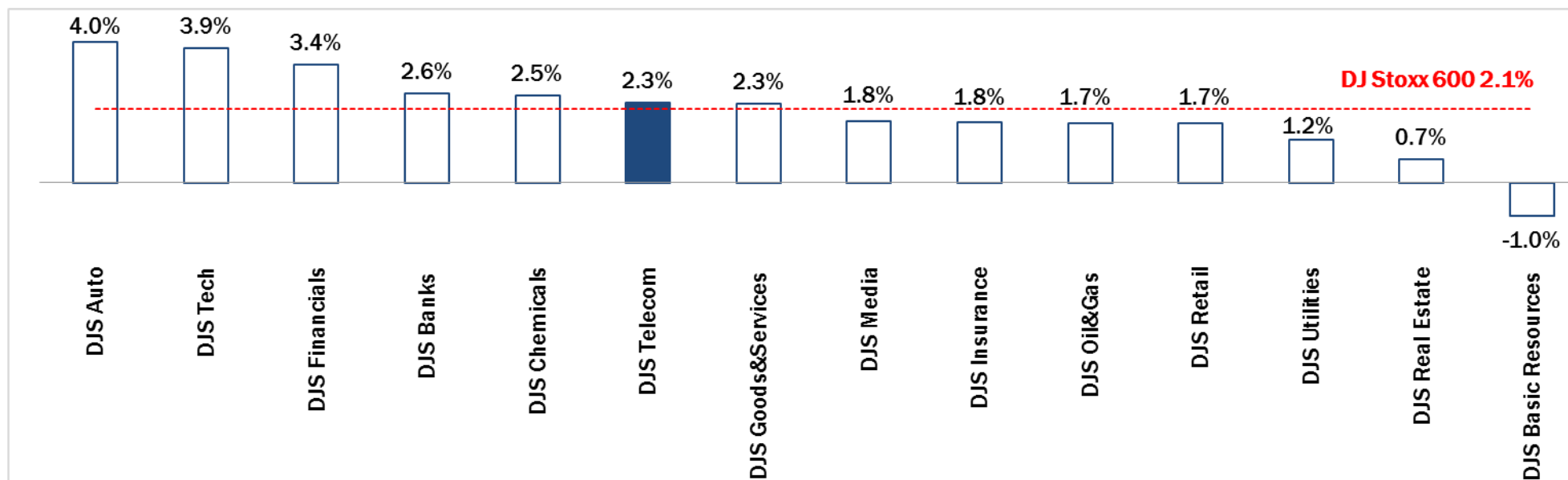
* performance calculated on closing price

Source: Bloomberg LP

** n. of traded shares

NB: Weekly performances are referred to last 5 open market sessions.

Weekly Performance Summary of Major European Sectors



Index	Index Point as of 22-Aug-14	Performance (Δ)*					Last 52 weeks		Daily average volume **		Market Cap. (mln. local cur.)
		1 week	1 month	6 months	1 year	from Jan. '14	Low Price	High Price	1 week	1 month	
DJStoxx 600	336.75	2.1%	-1.5%	-0.5%	10.5%	2.6%	295.88	349.71	1,890,515,661	2,540,944,631	8,599,894.00
Sectors											
DJS Telecom	293.17	2.3%	-2.1%	-4.4%	17.4%	-1.5%	242.99	310.37	182,734,394	244,971,151	407,025.75
DJS Auto	477.14	4.0%	-4.6%	-7.0%	10.3%	-1.0%	401.05	536.66	25,866,335	38,658,630	270,068.50
DJS Banks	193.24	2.6%	-1.7%	-5.0%	6.2%	-0.5%	172.43	209.5	893,436,608	1,272,009,408	1,148,328.25
DJS Basic Resources	427.63	-1.0%	-5.4%	1.6%	8.9%	6.7%	369.17	455.43	61,939,398	70,549,477	309,952.19
DJS Chemicals	745.69	2.5%	-1.5%	-1.7%	5.2%	-1.5%	678.59	793.87	12,128,319	14,767,587	364,805.66
DJS Oil&Gas	348.2	1.7%	-3.8%	3.0%	9.6%	3.9%	311.13	381.9	75,995,474	94,898,363	668,667.31
DJS Financials	351.39	3.4%	-2.0%	2.2%	16.7%	2.3%	290.88	368.62	19,663,343	28,242,497	145,492.66
DJS Goods&Services	400.86	2.3%	-1.2%	-3.5%	5.9%	-3.1%	365.93	425.9	112,726,352	132,678,855	887,342.44
DJS Insurance	230.67	1.8%	-0.9%	-1.1%	13.6%	1.1%	193.68	235.64	83,156,219	105,712,525	505,050.34
DJS Media	249.06	1.8%	0.0%	-4.4%	11.4%	-1.9%	216.96	260.77	39,562,618	59,472,180	225,999.95
DJS Tech	290.85	3.9%	1.0%	1.3%	11.5%	0.1%	252.33	294.24	60,822,262	75,980,818	267,130.22
DJS Utilities	313.2	1.2%	-2.6%	5.5%	20.7%	12.5%	254.38	326.7	103,517,102	128,568,782	463,938.06
DJS Retail	304.59	1.7%	-1.4%	-6.9%	-1.4%	-6.3%	290.81	333.73	56,226,673	85,445,670	310,677.34
DJS Real Estate	153.99	0.7%	1.0%	4.3%	20.2%	13.1%	124.23	156.68	13,113,249	16,896,011	120,471.30

* performance calculated on closing price

** n. of traded shares

Source: Bloomberg LP

NB: Weekly performances are referred to last 5 open market sessions.

Europe: Stock Performance of Main TLC Operators

Last Week Performance

Vodafone Group	4.2%
OTE	3.9%
Tele2	3.3%
C&W Comm.	3.1%
Telecom Italia Ord.	2.8%
British Telecom	2.3%
DJStoxx Telecom	2.3%
KPN	2.0%
Swisscom	1.9%
Jazztel	1.9%
Freenet	1.9%
Orange	1.7%
Teliasonera	1.6%
Vivendi	1.5%
Belgacom	1.3%
Telefonica	1.3%
Telecom Italia Sav.	1.0%
Deutsche Telekom	0.8%
Inmarsat	0.7%
Elisa	0.7%
TDC	0.4%
Ziggo	0.3%
Talk Talk	0.2%
TEF Deutschland	0.1%
Telekom Austria	0.0%
Iliad	-0.1%
Telenor	-0.3%
Portugal Telecom	-2.9%

2014 Year-To-Date Performance

Telekom Austria	29.9%
Orange	24.9%
Jazztel	24.7%
Belgacom	24.2%
Telecom Italia Sav.	21.0%
Tele2	17.7%
Telecom Italia Ord.	15.5%
Swisscom	13.2%
Iliad	13.2%
OTE	10.7%
Elisa	8.0%
Vivendi	7.3%
KPN	6.4%
Ziggo	6.0%
TEF Deutschland	4.2%
Telefonica	0.3%
British Telecom	0.1%
Talk Talk	-1.4%
DJStoxx Telecom	-1.5%
Telenor	-2.2%
Teliasonera	-4.5%
Inmarsat	-6.9%
Freenet	-8.7%
TDC	-9.0%
Deutsche Telekom	-9.9%
C&W Comm.	-11.1%
Vodafone Group	-14.6%
Portugal Telecom	-56.9%

Last 1 Year Performance

Telecom Italia Sav.	78.6%
Telecom Italia Ord.	70.4%
OTE	54.6%
Belgacom	45.0%
Orange	43.8%
Jazztel	37.8%
Vivendi	29.8%
Swisscom	26.8%
Elisa	26.7%
Telekom Austria	25.3%
TEF Deutschland	23.3%
C&W Comm.	23.0%
Talk Talk	22.2%
DJStoxx Telecom	17.4%
Ziggo	15.9%
Deutsche Telekom	14.9%
British Telecom	14.3%
Telefonica	10.4%
KPN	10.3%
Freenet	10.0%
Teliasonera	8.0%
Telenor	7.0%
Vodafone Group	5.6%
Tele2	4.3%
TDC	2.4%
Inmarsat	0.6%
Iliad	-7.7%
Portugal Telecom	-52.6%

Performance Summary of Main European TLC Operators

Cl. Price (local currency) 22-Aug-14	Performance ($\Delta\%$)*					Last 52 weeks		Daily average volume **		Market Cap. (all in €mln)
	1 week	1 month	6 months	1 year	from Jan. '14	Low Price	High Price	1 week	1 month	

EUROPE

Index

DJStoxx Telecom	293.17	2.3%	-2.1%	-4.4%	17.4%	-1.5%	242.99	310.37	182,734,394	244,971,151
-----------------	--------	------	-------	-------	-------	-------	--------	--------	-------------	-------------

TLC Operators

Telecom Italia Ord.	0.833	2.8%	-4.8%	-4.5%	70.4%	15.5%	0.473	1.012	71,670,340	98,838,850	11,170
Telecom Italia Sav.	0.666	1.0%	-5.1%	2.1%	78.6%	21.0%	0.361	0.792	12,478,300	15,581,270	4,013
Altice	47.16	4.2%	5.3%	57.4%	n.a.	n.a.	25.505	57.010	79,103	110,873	11,683
Belgacom	26.70	1.3%	10.6%	18.8%	45.0%	24.2%	17.835	26.935	582,511	761,553	9,025
British Telecom	379.90	2.3%	-2.4%	-8.1%	14.3%	0.1%	321.800	421.200	9,921,364	10,814,130	38,635
C&W Comm.	50.00	3.1%	4.8%	-12.5%	23.0%	-11.1%	37.940	58.500	3,296,666	5,089,034	1,582
Deutsche Telekom	11.20	0.8%	-8.0%	-8.8%	14.9%	-9.9%	9.507	13.150	7,273,099	8,841,234	50,776
Elisa	20.81	0.7%	-3.3%	1.8%	26.7%	8.0%	15.870	22.850	349,158	399,065	3,482
Freenet	19.89	1.9%	-5.2%	-17.0%	10.0%	-8.7%	17.375	25.960	399,013	875,300	2,546
Orange	11.24	1.7%	-3.2%	19.1%	43.8%	24.9%	7.509	12.850	3,637,908	5,807,726	29,773
OTE	10.70	3.9%	2.8%	-9.7%	54.6%	10.7%	6.540	13.200	739,457	942,924	5,245
Iliad	168.50	-0.1%	-23.0%	-5.9%	-7.7%	13.2%	144.850	247.400	65,652	116,634	9,786
Inmarsat	704.00	0.7%	-6.4%	0.9%	0.6%	-6.9%	636.000	774.500	555,396	581,569	3,951
Jazztel	9.70	1.9%	-1.7%	-1.0%	37.8%	24.7%	6.802	11.490	2,496,167	2,515,445	2,486
KPN	2.49	2.0%	5.3%	-8.0%	10.3%	6.4%	2.097	2.805	6,326,805	14,712,900	10,650
TEF Deutschland	5.78	0.1%	-3.5%	3.3%	23.3%	4.2%	4.599	6.388	453,835	769,298	6,456
Portugal Telecom	1.36	-2.9%	-23.0%	-57.9%	-52.6%	-56.9%	1.322	4.175	6,437,461	11,736,830	1,220
Swisscom	533.00	1.9%	3.8%	3.3%	26.8%	13.2%	411.500	548.500	84,220	82,437	22,818
Talk Talk	301.60	0.2%	-4.8%	-4.8%	22.2%	-1.4%	235.600	334.300	779,792	1,244,947	3,605
TDC	47.85	0.4%	-14.1%	-9.1%	2.4%	-9.0%	45.830	57.700	1,650,675	1,782,028	5,211
Telefonica	11.87	1.3%	-2.3%	4.5%	10.4%	0.3%	10.265	13.135	10,653,230	15,438,260	54,021
Telenor	141.40	-0.3%	-4.5%	6.5%	7.0%	-2.2%	123.900	153.800	835,187	1,143,596	26,021
Tele2	85.75	3.3%	1.8%	10.5%	4.3%	17.7%	68.750	87.500	1,382,048	1,486,696	4,178
Telekom Austria	7.15	0.0%	0.1%	0.5%	25.3%	29.9%	5.310	7.595	252,333	476,578	3,167
Teliasonera	51.15	1.6%	-1.4%	2.9%	8.0%	-4.5%	43.980	54.900	3,891,039	5,616,632	24,195
Vivendi	19.49	1.5%	6.7%	-1.3%	29.8%	7.3%	14.247	20.199	2,877,899	4,951,656	26,276
Vodafone Group	205.85	4.2%	4.5%	-14.4%	5.6%	-14.6%	187.350	252.300	48,607,340	54,374,310	68,281
Ziggo	35.20	0.3%	2.1%	5.1%	15.9%	6.0%	28.565	35.425	380,247	519,359	7,040

* performance calculated on closing price ** n. of
traded shares

Source: Bloomberg LP

Brazil: Stock Performance of Main TLC Operators

Last Week Performance

Embratel ON	7.1%
Telefonica Brasil ON	3.8%
Brazilian Equity - Bovespa Index	2.5%
TIM Participações	1.7%
Telefonica Brasil PN	1.6%
Oi PN	0.0%
Embratel PN	-0.6%
Oi ON	-0.8%
NET Servicos PN	-4.2%

2014 Year-To-Date Performance

NET Servicos PN	106%
Embratel ON	78.8%
Embratel PN	66.7%
Brazilian Equity - Bovespa Index	13.4%
Telefonica Brasil PN	-3.6%
Telefonica Brasil ON	-5.0%
TIM Participações	-9.8%
Oi ON	-64.5%
Oi PN	-66.0%

Last 1 Year Performance

NET Servicos PN	59.6%
Embratel ON	57.9%
Embratel PN	53.4%
TIM Participações	19.6%
Brazilian Equity - Bovespa Index	11.9%
Telefonica Brasil PN	-8.9%
Telefonica Brasil ON	-9.7%
Oi PN	-69.0%
Oi ON	-70.8%

Performance Summary of Main LatAm TLC Operators

Cl. Price 22-Aug-14	Performance (Δ%)*						Last 52 weeks		Daily average volume **		Market Cap. (mln)***
	1 week	1 month	6 months	1 year	from Jan. '14	Low Price	High Price	1 week	1 month		

BRAZIL

Index

Brazilian Equity - Bovespa Index	R\$ 58,407.32	2.5%	1.0%	25.0%	11.9%	13.4%	44,904.83	59,207.06	314,052,966	323,556,490	R\$ 1,926,025
----------------------------------	---------------	------	------	-------	-------	-------	-----------	-----------	-------------	-------------	---------------

Peers

TIM Participações	R\$ 11.12	1.7%	-8.9%	-5.8%	19.6%	-9.8%	R\$ 8.73	R\$ 13.81	2,323,480	2,771,700	R\$ 26,884
--------------------------	------------------	-------------	--------------	--------------	--------------	--------------	-----------------	------------------	------------------	------------------	-------------------

Oi ON	R\$ 1.28	-0.8%	-22.9%	-68.1%	-70.8%	-64.5%	R\$ 1.22	R\$ 5.46	6,001,680	5,622,937	R\$ 3,663
Oi PN	R\$ 1.22	0.0%	-25.2%	-67.6%	-69.0%	-66.0%	R\$ 1.17	R\$ 5.18	42,823,220	51,239,160	R\$ 6,982
Telefonica Brasil ON	R\$ 38.00	3.8%	-0.9%	2.2%	-9.7%	-5.0%	R\$ 36.49	R\$ 45.50	14,880	21,513	R\$ 14,500
Telefonica Brasil PN	R\$ 43.20	1.6%	-5.1%	0.9%	-8.9%	-3.6%	R\$ 41.66	R\$ 51.50	960,820	1,059,813	R\$ 32,141
Embratel ON	R\$ 15.00	7.1%	0.0%	89.9%	57.9%	78.8%	R\$ 6.60	R\$ 23.88	860	600	R\$ 9,573
Embratel PN	R\$ 14.42	-0.6%	-6.4%	82.8%	53.4%	66.7%	R\$ 6.70	R\$ 23.50	32,180	6,857	R\$ 8,553
NET Servicos PN	R\$ 46.00	-4.2%	-26.4%	55.5%	59.6%	106.0%	R\$ 18.98	R\$ 63.85	260	640	R\$ 11,485

ARGENTINA

Index

Argentinean Equity - Merval Index	9,171.12	9.5%	15.8%	56.7%	135.0%	70.1%	3,829.07	9,171.12	260	640	ARS 1,396,744
-----------------------------------	----------	------	-------	-------	--------	-------	----------	----------	-----	-----	---------------

Integrated

Telecom Argentina - "B shares"	ARS 46.60	3.7%	5.2%	31.3%	41.6%	50.3%	ARS 27.40	ARS 50.30	47,777	67,951	ARS 45,872
Telecom Argentina - ADR	\$18.94	-3.2%	-14.9%	12.5%	-2.5%	9.9%	\$13.93	\$25.56	137,485	214,739	\$3,729

Nortel Inversora B shares - ADR	\$21.14	-2.0%	-11.0%	16.5%	24.1%	6.2%	\$15.68	\$26.37	2,483	8,969	\$2,875
---------------------------------	---------	-------	--------	-------	-------	------	---------	---------	-------	-------	---------

MEXICO

Index

Mexican Equity - Mexbol Index	45,374.99	1.7%	2.2%	16.3%	10.9%	6.2%	37,751.64	45,517.14	163,908,637	157,575,753	MXN 4,946,002
-------------------------------	-----------	------	------	-------	-------	------	-----------	-----------	-------------	-------------	---------------

Mobile/Integrated

America Movil	MXN 15.71	1.6%	2.0%	17.8%	20.5%	3.2%	MXN 12.39	MXN 15.85	45,121,720	52,951,310	MXN 1,087,983
---------------	-----------	------	------	-------	-------	------	-----------	-----------	------------	------------	---------------

TV

Grupo Televisa	MXN 96.89	0.7%	9.2%	27.0%	38.9%	23.1%	MXN 67.00	MXN 98.18	2,828,423	2,529,663	MXN 280,216
----------------	-----------	------	------	-------	-------	-------	-----------	-----------	-----------	-----------	-------------

CROSS-LATAM OPERATORS

Mobile

NII Holding	US\$ 0.16	18.4%	-77.3%	-94.5%	-97.4%	-94.1%	US\$ 0.12	US\$ 7.50	15,068,630	8,187,748	US\$ 28
-------------	-----------	-------	--------	--------	--------	--------	-----------	-----------	------------	-----------	---------

* performance calculated on closing price

** n. of traded shares

*** For Telecom Argentina, reported market capitalization represents estimated market capitalization of all Classes of Shares (A,B,C - of which only Class B is listed).



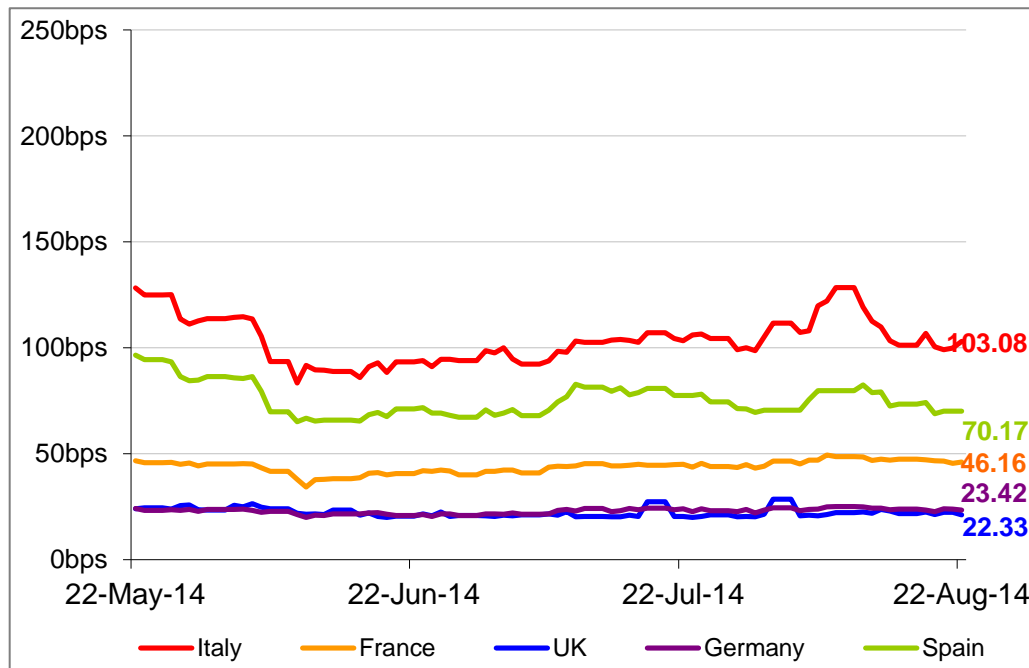
European Telecoms Sector: Credit Outlook

Long-term Credit Ratings

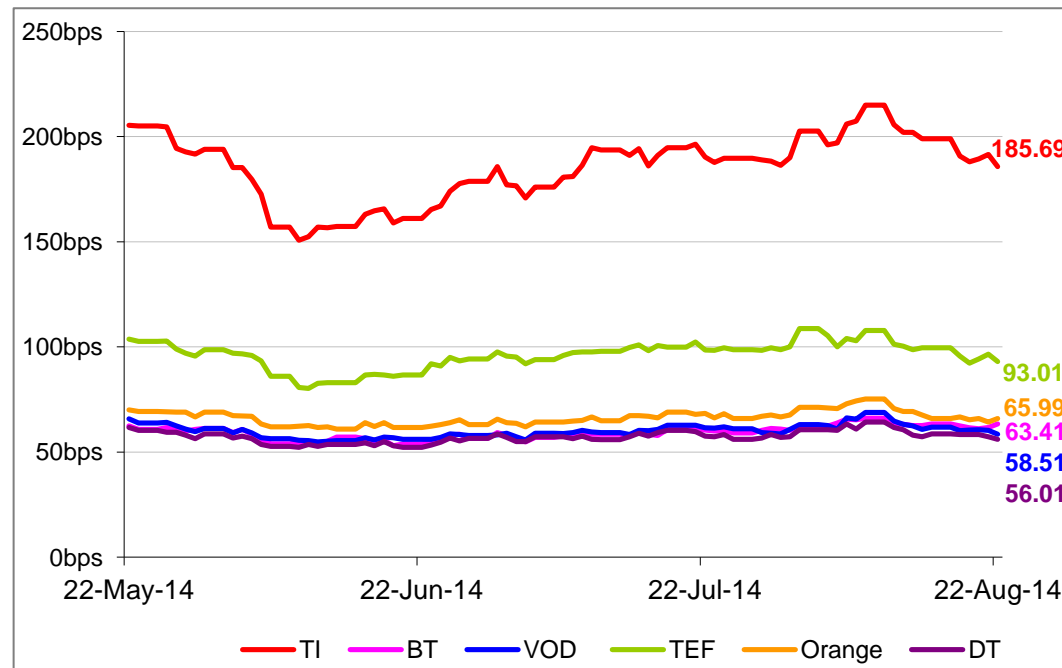
	Moody's		S&P		Fitch	
	rating	outlook	rating	outlook	rating	outlook
<u>Telecom Italia</u>	Ba1	NEG	BB+	NEG	BBB-	NEG
<u>Belgacom</u>	A1	STABLE	A	STABLE	n.a.	n.a.
<u>British Telecom</u>	Baa2	POS	BBB	STABLE	BBB	STABLE
<u>Deutsche Telekom</u>	Baa1	STABLE	BBB+	STABLE	BBB+	STABLE
<u>Orange</u>	Baa1	STABLE	BBB+	NEG	BBB+	NEG
<u>KPN</u>	Baa3	STABLE	BBB-	STABLE	BBB-	STABLE
<u>Oi</u>	Baa3 *-	*CW NEG	BB+	STABLE	BB+	STABLE
<u>Swisscom</u>	A2	STABLE	A	STABLE	n.a.	n.a.
<u>Telefonica</u>	Baa2	NEG	BBB	STABLE	BBB+	NEG
<u>Telekom Austria</u>	Baa2	STABLE	BBB	STABLE	n.a.	n.a.
<u>Telenor</u>	A3	STABLE	A-	POS	A-	STABLE
<u>Telia Sonera</u>	A3	STABLE	A-	STABLE	A-	STABLE
<u>Vodafone</u>	Baa1	STABLE	A-	NEG	BBB+	STABLE
<u>Wind Telecomunicazioni SpA</u>	B2	STABLE	BB-	STABLE	B+	STABLE
<u>Vimpelcom</u>	Ba3	STABLE	BB	POS	n.a.	n.a.

5 Years CDS levels

Countries



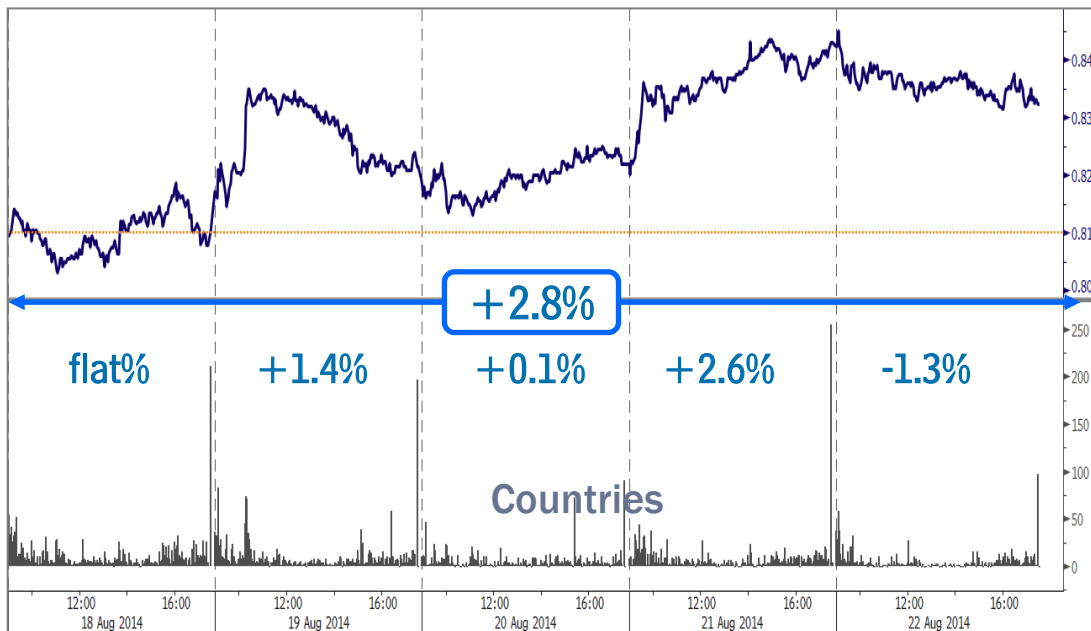
TLC Operators



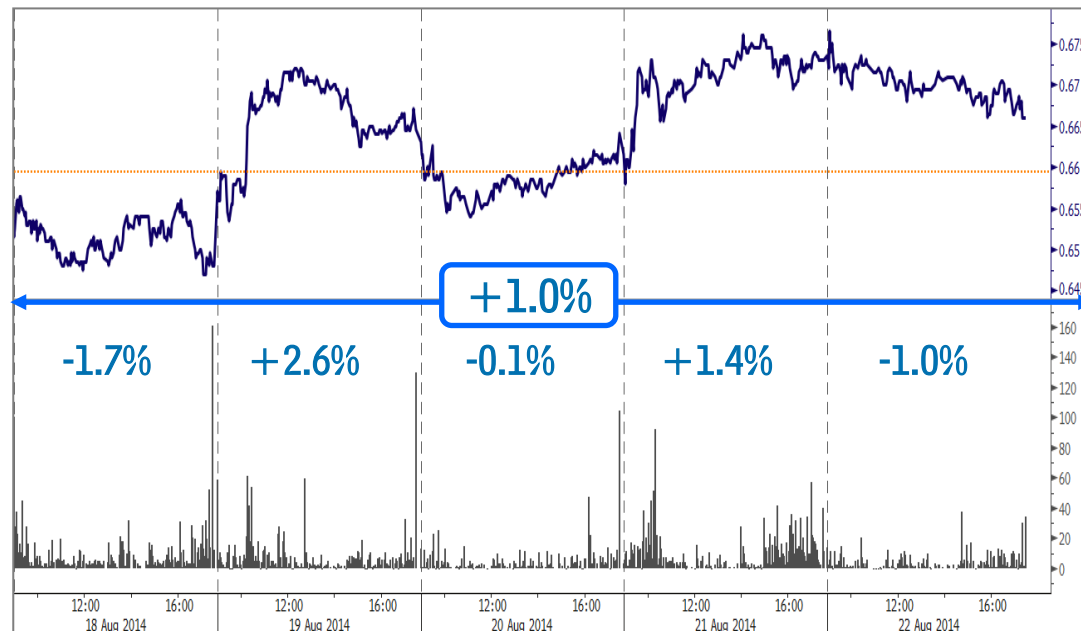
NB: Weekly performances are referred to last 5 open market sessions.

Telecom Italia Group – Weekly Performance: Price (€) and Volumes (mln)

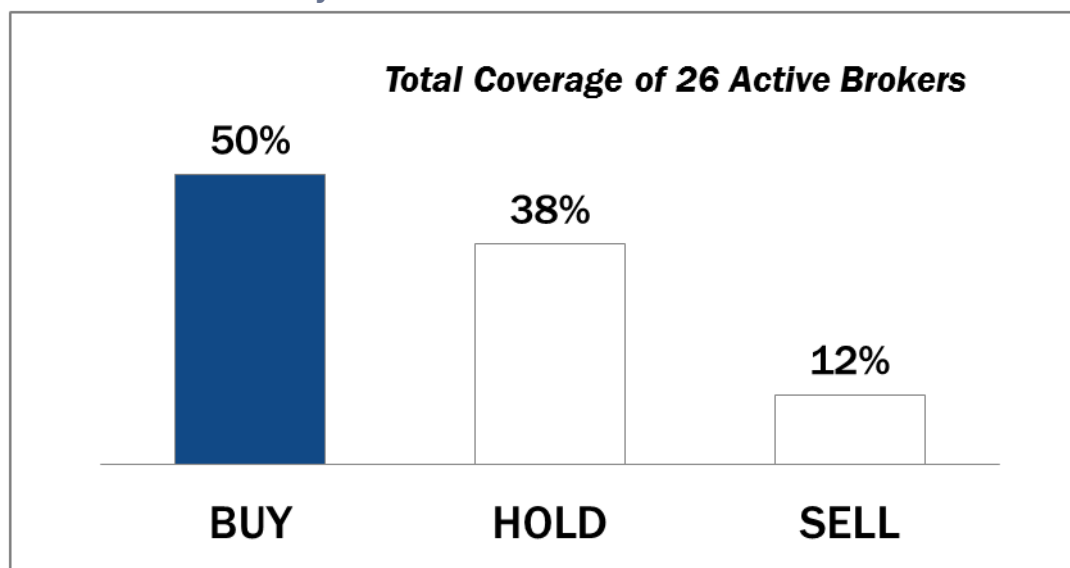
TI Ordinary Shares



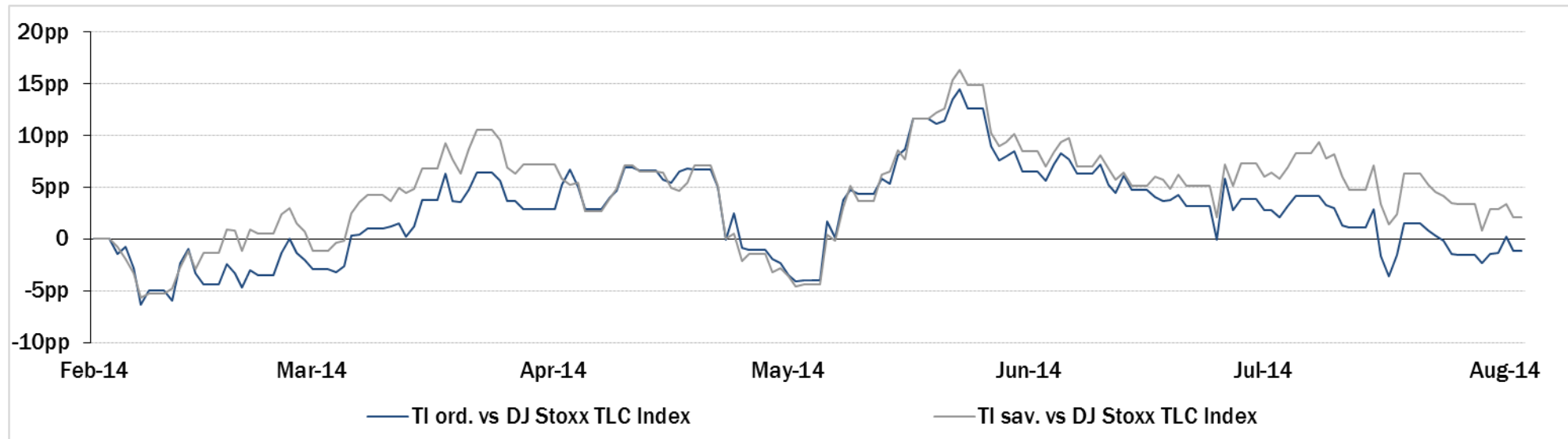
TI Saving Shares



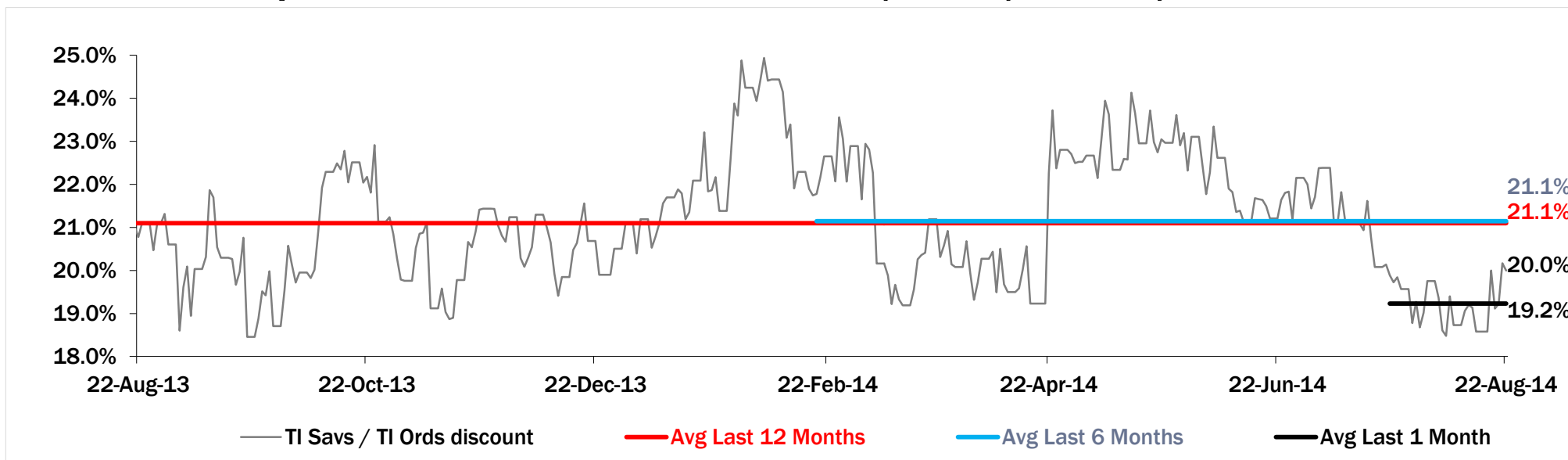
Analyst' Recommendation on TI



Relative Performance Last 6 Months of Telecom Italia Shares vs TLC Sector



Evolution of the spread between Telecom Italia shares (TI Savs / TI Ords) in the last 12 months



Performance Summary of FTSE MIB



Cl. Price € 22-Aug-14	Performance (Δ%)*					Last 52 weeks		Daily average volume		Market** Cap. mil. Euro
	1 week	1 month	6 months	1 year	from Jan. '14	Low Price	High Price	1 week	1 month	

Index

FTSE MIB (Milan)	19,918	2.2%	-5.4%	-2.7%	14.9%	5.0%	16,504	22,590	454,181,094	605,210,884	410,565
FTSE Italia All-Share (Milan)	21,146	2.3%	-5.3%	-3.0%	15.0%	4.7%	17,585	23,913	657,374,912	880,052,173	487,646
Stocks FTSE MIB											
A2A SPA	0.81	6.7%	-5.7%	-11.4%	17.2%	-5.2%	0.63	1.03	15,328,070	14,127,920	2,525
ANSALDO STS SPA	7.74	7.1%	5.8%	5.5%	20.5%	9.5%	5.85	7.90	1,006,774	644,042	1,547
ASSICURAZIONI GENERALI	15.37	1.3%	0.3%	-7.5%	-0.1%	-10.1%	14.21	17.70	3,958,290	5,726,102	23,929
ATLANTIA SPA	18.37	2.1%	-8.5%	1.0%	28.6%	12.6%	13.65	21.50	1,823,355	2,181,252	15,170
AUTOGRILL SPA	6.02	2.6%	-8.1%	-13.3%	13.1%	-2.0%	5.07	7.77	570,396	953,797	1,531
AZIMUT HOLDING SPA	18.86	8.3%	-0.7%	-18.9%	12.9%	-1.9%	15.23	25.92	721,121	930,560	2,702
BANCA MONTE DEI PASCHI SIENA	1.09	4.6%	-16.3%	-3.2%	-23.5%	-0.4%	0.94	2.73	44,223,040	61,016,820	5,587
BANCA POPOL EMILIA ROMAGNA	5.95	2.0%	-6.6%	-19.4%	17.5%	-5.7%	4.60	8.87	3,300,509	3,698,222	2,852
BANCA POPOLARE DI MILANO	0.58	5.9%	-5.7%	28.7%	63.2%	44.5%	0.33	0.74	41,636,390	64,316,830	2,547
BANCO POPOLARE SC	11.80	5.6%	-1.0%	9.0%	40.2%	11.8%	7.71	16.41	2,343,514	4,083,098	4,274
BUZZI UNICEM SPA	11.39	2.8%	-10.2%	-21.9%	1.6%	-13.1%	10.15	15.20	611,093	750,046	2,170
CNH INDUSTRIAL NV	6.66	4.2%	-2.9%	-18.2%	n.a.	-19.6%	6.15	9.86	2,094,922	3,668,473	9,013
DAVIDE CAMPARI-MILANO SPA	5.77	1.3%	-2.3%	-6.3%	-5.3%	-5.2%	5.57	6.68	856,033	1,188,372	3,348
ENEL GREEN POWER SPA	2.04	3.3%	-0.5%	2.6%	22.4%	11.2%	1.55	2.19	6,895,015	7,031,717	10,180
ENEL SPA	3.92	0.5%	-7.6%	4.2%	49.1%	23.4%	2.46	4.49	25,594,810	31,082,560	36,824
ENI SPA	18.42	0.2%	-6.9%	6.1%	5.7%	5.3%	16.20	20.46	9,339,879	11,042,820	66,942
EXOR SPA	29.00	3.7%	-1.9%	-3.0%	8.0%	0.3%	25.30	33.48	184,336	369,648	7,141
FIAT SPA	7.32	-0.2%	-4.1%	-4.1%	19.1%	23.0%	5.17	9.08	10,200,330	16,937,520	9,151
FINMECCANICA SPA	6.91	3.8%	-2.3%	-3.1%	70.1%	25.5%	3.80	7.43	2,636,595	3,514,326	3,995
GTECH SPA	18.10	1.6%	-5.2%	-22.7%	-16.7%	-18.3%	15.24	24.13	707,296	1,152,449	3,166
INTESA SANPAOLO	2.23	5.3%	-1.6%	1.5%	42.5%	24.2%	1.43	2.66	113,753,400	134,122,600	36,400
LUXOTTICA GROUP SPA	38.81	-3.6%	-5.7%	-2.0%	-5.1%	-0.4%	35.22	43.30	1,560,322	693,384	18,652
MEDIASET SPA	3.08	5.9%	0.2%	-25.0%	-8.3%	-10.6%	2.76	4.45	7,777,932	9,309,052	3,638
MEDIOBANCA SPA	6.58	6.5%	-4.0%	-8.1%	32.4%	3.4%	4.54	8.49	3,831,816	4,907,109	5,664
MEDIOLANUM SPA	5.57	6.4%	-4.0%	-17.4%	-2.5%	-11.7%	5.12	7.19	1,198,061	1,878,972	4,100
PIRELLI & C.	11.42	3.4%	-0.5%	-8.9%	19.3%	-9.2%	8.89	12.99	1,518,584	1,950,227	5,562
PRYSMIAN SPA	15.33	2.1%	-2.9%	-19.4%	-12.5%	-18.1%	14.86	19.79	849,416	1,112,262	3,290
SAIPEM SPA	17.79	1.7%	-5.7%	5.9%	6.4%	14.3%	14.81	21.00	1,268,625	2,050,802	7,853
SALVATORE FERRAGAMO SPA	19.77	-0.9%	-9.1%	-14.1%	-22.3%	-28.5%	18.96	29.85	313,296	451,415	3,329
SNAM SPA	4.34	2.1%	-1.7%	5.6%	19.7%	6.8%	3.47	4.55	6,726,590	7,905,267	14,690
STMICROELECTRONICS NV	6.29	4.5%	-4.3%	3.1%	-4.2%	8.8%	5.26	7.42	3,559,334	4,577,972	5,724
TELECOM ITALIA SPA	0.833	2.8%	-4.8%	-4.5%	70.4%	15.5%	0.47	1.01	71,670,340	98,838,850	15,183
TENARIS SA	16.33	1.3%	-2.6%	6.0%	-5.8%	2.8%	14.78	18.45	943,338	1,418,163	19,278
TERNA SPA	3.86	2.6%	-3.0%	3.5%	16.6%	6.3%	3.17	4.14	5,399,006	6,040,376	7,759
TOD'S SPA	81.00	1.6%	-5.9%	-18.3%	-43.1%	-33.3%	75.00	143.00	138,466	164,092	2,479
UNICREDIT SPA	5.77	3.3%	-1.7%	-1.1%	26.1%	7.2%	4.19	6.89	47,458,270	57,158,150	33,851
UBI BANCA SCPA	5.59	3.2%	-7.8%	-8.9%	55.7%	13.1%	3.32	7.55	6,320,256	7,898,986	5,036
UNIPOLSAI SPA	2.28	3.3%	-1.9%	1.8%	59.5%	2.7%	1.34	2.72	5,083,186	6,147,655	6,297
WORLD DUTY FREE SPA	8.25	4.0%	-10.3%	-21.8%	n.a.	-9.7%	6.80	11.07	595,741	728,370	2,100
YOOX SPA	17.94	-0.7%	-15.3%	-42.2%	-26.8%	-45.0%	16.69	35.09	551,897	904,788	1,062

** for FTSE MIB stocks, market cap here reported on overall shares outstanding

Source: Bloomberg LP