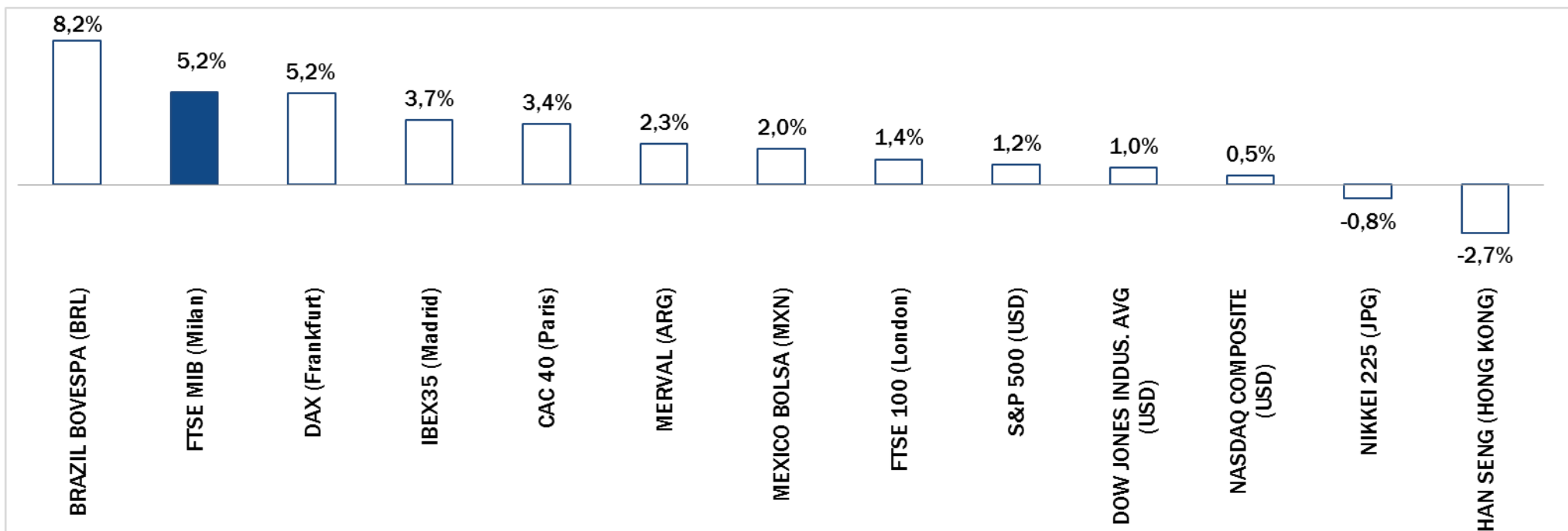


Weekly Stock Market Report for Telecom Italia Retail Shareholders

November 17th – November 21st, 2014

Weekly Performance Summary of Major Worldwide Market Stock Exchanges



Index Point as of 21-Nov-14	Performance ($\Delta\%$)*					Last 52 weeks		Daily average volume **		Market Cap. (mln. local cur.)
	1 week	1 month	6 months	1 year	from Jan. '14	Low Price	High Price	1 week	1 month	

Europe

FTSE MIB (Milan)	19.955	5,2%	4,7%	-3,1%	5,9%	5,2%	17.556	22.590	706.163.469	930.363.703	395.507
FTSE 100 (London)	6.751	1,4%	5,9%	-1,0%	1,0%	0,0%	6.073	6.905	663.106.048	844.415.708	1.825.131
DAX (Frankfurt)	9.733	5,2%	9,5%	0,4%	5,8%	1,9%	8.355	10.051	75.599.704	106.189.166	934.642
CAC 40 (Paris)	4.347	3,4%	6,5%	-2,7%	2,2%	1,2%	3.789	4.599	100.106.733	149.959.528	1.141.039
IBEX35 (Madrid)	10.521	3,7%	3,6%	-0,1%	9,6%	6,1%	9.232	11.249	705.395.347	526.331.549	540.661

America

DOW JONES INDUS. AVG (USD)	17.810	1,0%	7,2%	7,7%	11,2%	7,4%	15.341	17.895	76.413.387	91.906.968	5.046.383
S&P 500 (USD)	2.064	1,2%	6,3%	9,3%	14,9%	11,6%	1.738	2.071	456.335.648	558.979.999	18.737.758
NASDAQ COMPOSITE (USD)	4.713	0,5%	6,6%	14,1%	18,7%	12,8%	3.937	4.752	429.555.571	526.304.033	7.126.489
MEXICO BOLSA (MXN)	44.633	2,0%	2,3%	6,7%	8,9%	4,5%	37.752	46.554	230.833.286	195.298.050	2.206.162
MERVAL (ARG)	9.977	2,3%	-8,2%	37,4%	84,9%	85,1%	5.105	12.599	6.478.265	9.235.077	9.672
BRAZIL BOVESPA (BRL)	56.084	8,2%	3,3%	7,1%	5,8%	8,9%	44.905	62.305	351.738.899	446.316.997	1.756.392

Asia

NIKKEI 225 (JPG)	17.358	-0,8%	13,5%	20,0%	12,8%	6,5%	13.885	17.521	1.642.498.432	1.713.947.383	323.129.504
HAN SENG (HONG KONG)	23.437	-2,7%	0,6%	2,1%	-1,1%	0,6%	21.138	25.363	1.511.889.894	1.590.343.887	14.390.030

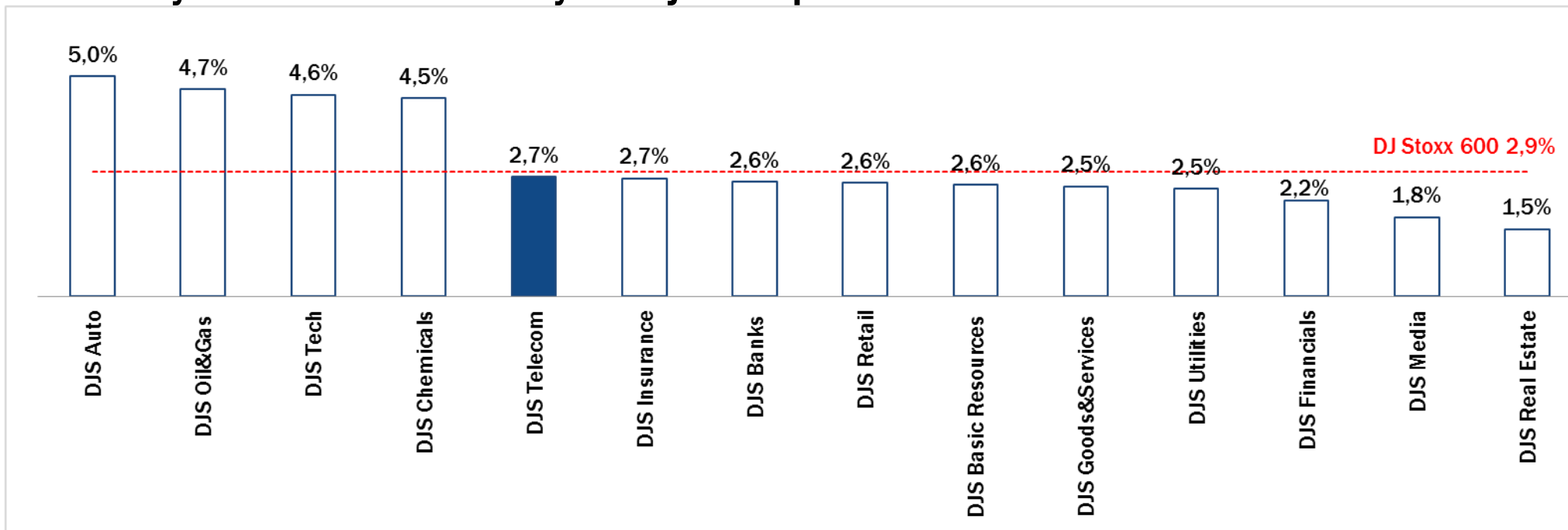
* performance calculated on closing price

** n. of traded shares

Source: Bloomberg LP

NB: Weekly performances are referred to last 5 open market sessions.

Weekly Performance Summary of Major European Sectors



Index	Index Point as of 21-Nov-14	Performance (Δ %)*					Last 52 weeks		Daily average volume **		Market Cap. (mln. local cur.)
		1 week	1 month	6 months	1 year	from Jan. '14	Low Price	High Price	1 week	1 month	
DJ Stoxx 600	345,24	2,9%	6,6%	1,4%	7,1%	5,2%	302,48	350,85	2.995.900.365	3.554.708.796	8.631.013,00
Sectors											
DJS Telecom	320,25	2,7%	13,3%	6,8%	9,7%	7,6%	265,32	320,44	363.116.979	371.258.807	433.384,41
DJS Auto	483,24	5,0%	9,3%	-4,8%	3,2%	0,3%	407,83	536,66	37.077.447	47.432.151	265.241,69
DJS Banks	192,21	2,6%	1,1%	-2,7%	1,5%	-1,0%	173,86	209,5	1.313.992.883	1.723.503.215	1.165.572,88
DJS Basic Resources	399,14	2,6%	1,5%	-3,3%	-0,7%	-0,4%	369,17	455,43	85.016.587	101.657.260	271.919,16
DJS Chemicals	790,42	4,5%	9,2%	2,2%	7,6%	4,4%	677,03	793,87	15.761.971	20.429.653	373.090,50
DJS Oil&Gas	325,34	4,7%	4,5%	-10,5%	-2,9%	-2,9%	287,36	381,9	235.236.634	192.730.077	603.133,75
DJS Financials	364,14	2,2%	10,0%	4,2%	13,5%	6,0%	307,16	368,62	26.895.933	35.317.728	148.735,91
DJS Goods&Services	404,05	2,5%	7,7%	-1,6%	1,3%	-2,4%	351,98	425,9	144.910.806	182.676.468	880.572,38
DJS Insurance	247,22	2,7%	8,9%	9,0%	12,5%	8,3%	210,78	247,45	102.736.570	118.426.949	488.151,13
DJS Media	262,03	1,8%	8,0%	6,7%	6,8%	3,2%	226,72	262,47	53.884.037	62.219.021	234.186,97
DJS Tech	300,32	4,6%	10,7%	8,6%	6,7%	3,4%	260,2	305,74	75.918.882	103.513.671	266.985,16
DJS Utilities	316,21	2,5%	4,2%	1,4%	12,8%	13,6%	265,76	328,18	238.995.261	203.323.951	441.787,06
DJS Retail	303,73	2,6%	8,7%	-4,4%	-6,4%	-6,6%	259,46	331,27	106.944.786	134.164.090	306.987,16
DJS Real Estate	158,77	1,5%	5,8%	6,8%	16,2%	16,6%	129,71	159,1	19.231.423	21.116.110	122.230,89

* performance calculated on closing price

** n. of traded shares

Source: Bloomberg LP

NB: Weekly performances are referred to last 5 open market sessions.

Europe: Stock Performance of Main TLC Operators

Last Week Performance

OTE	11,9%
Orange	7,5%
Portugal Telecom	7,0%
Iliad	6,6%
Freenet	6,4%
TEF Deutschland	6,3%
Deutsche Telekom	5,2%
TDC	4,6%
KPN	3,9%
Elisa	3,4%
DJStoxx Telecom	2,7%
Swisscom	2,3%
Telecom Italia Ord.	2,1%
Vivendi	1,9%
Inmarsat	1,9%
British Telecom	1,5%
Telefonica	1,5%
Belgacom	1,1%
Vodafone Group	1,1%
Teliasonera	0,9%
Telekom Austria	0,9%
Tele2	0,5%
Telecom Italia Sav.	0,5%
Jazztel	0,1%
C&W Comm.	-1,2%
Telenor	-1,2%
Talk Talk	-2,7%
Ziggo	-9,8%

2014 Year-To-Date Performance

Jazztel	64,5%
Orange	52,3%
Belgacom	42,6%
Tele2	33,0%
Iliad	32,0%
Telecom Italia Sav.	29,3%
Telecom Italia Ord.	27,5%
Swisscom	23,1%
Elisa	20,7%
KPN	14,7%
Vivendi	11,3%
Ziggo	9,2%
DJStoxx Telecom	7,6%
Telenor	6,9%
Telekom Austria	6,9%
Freenet	6,5%
Deutsche Telekom	5,9%
Telefonica	5,4%
OTE	1,9%
British Telecom	0,2%
Inmarsat	-1,9%
Teliasonera	-3,1%
TEF Deutschland	-3,3%
Vodafone Group	-5,5%
TDC	-7,5%
Talk Talk	-7,7%
C&W Comm.	-14,7%
Portugal Telecom	-52,8%

Last 1 Year Performance

Jazztel	67,9%
Orange	45,5%
Belgacom	44,6%
Telecom Italia Sav.	36,3%
Telecom Italia Ord.	33,9%
Swisscom	24,7%
Elisa	24,3%
Tele2	21,0%
Iliad	18,5%
Deutsche Telekom	16,7%
OTE	15,2%
Vivendi	15,1%
Ziggo	14,6%
Freenet	12,8%
Inmarsat	10,1%
DJStoxx Telecom	9,7%
KPN	9,6%
Talk Talk	4,4%
Telenor	3,0%
Telefonica	2,8%
TDC	1,3%
C&W Comm.	1,2%
British Telecom	0,1%
Vodafone Group	-2,6%
Telekom Austria	-2,9%
TEF Deutschland	-4,3%
Teliasonera	-4,3%
Portugal Telecom	-51,6%

Performance Summary of Main European TLC Operators

	Cl. Price (local currency) 21-Nov-14	Performance ($\Delta\%$)*					Last 52 weeks		Daily average volume **		Market Cap. (all in €mln)
		1 week	1 month	6 months	1 year	from Jan. '14	Low Price	High Price	1 week	1 month	
EUROPE											
Index											
DJStoxx Telecom	320,25	2,7%	13,3%	6,8%	9,7%	7,6%	265,32	320,44	363.116.979	371.258.807	
TLC Operators											
Telecom Italia Ord.	0,920	2,1%	14,6%	10,6%	33,9%	27,5%	0,652	1,012	103.918.300	120.158.100	12.387
Telecom Italia Sav.	0,712	0,5%	11,7%	10,8%	36,3%	29,3%	0,499	0,792	17.630.770	17.082.210	4.288
Altice	49,00	1,2%	11,2%	-1,3%	n.a.	n.a.	25,505	57,010	463.725	179.703	12.138
Belgacom	30,66	1,1%	14,6%	28,9%	44,6%	42,6%	19,975	31,225	609.299	990.470	10.364
British Telecom	380,00	1,5%	2,8%	-0,5%	0,1%	0,2%	350,300	421,200	15.239.550	17.519.130	39.100
C&W Comm.	47,99	-1,2%	6,1%	-12,7%	1,2%	-14,7%	42,910	58,500	7.368.708	8.870.627	1.769
Deutsche Telekom	13,16	5,2%	21,3%	6,1%	16,7%	5,9%	10,065	13,175	11.660.770	14.996.450	59.688
Elisa	23,24	3,4%	16,2%	3,3%	24,3%	20,7%	17,580	23,330	280.905	504.208	3.889
Freenet	23,20	6,4%	17,7%	4,5%	12,8%	6,5%	17,695	25,960	663.115	566.860	2.971
Orange	13,71	7,5%	25,6%	12,6%	45,5%	52,3%	8,388	13,715	7.653.175	10.378.190	36.303
OTE	9,85	11,9%	-1,7%	-2,7%	15,2%	1,9%	8,460	13,200	787.386	983.116	4.828
Iliad	196,60	6,6%	9,7%	-8,4%	18,5%	32,0%	144,850	247,400	78.565	135.664	11.487
Inmarsat	741,50	1,9%	7,6%	4,2%	10,1%	-1,9%	653,000	774,500	1.035.197	795.789	4.200
Jaztel	12,80	0,1%	0,9%	18,4%	67,9%	64,5%	7,210	12,860	3.807.273	4.919.191	3.280
KPN	2,69	3,9%	15,9%	2,1%	9,6%	14,7%	2,133	2,805	13.441.570	17.670.360	11.478
TEF Deutschland	4,24	6,3%	14,6%	-5,1%	-4,3%	-3,3%	3,466	5,052	2.092.063	2.842.383	12.612
Portugal Telecom	1,49	7,0%	48,9%	-44,3%	-51,6%	-52,8%	0,865	3,639	8.092.686	16.175.760	1.338
Swisscom	579,50	2,3%	10,5%	6,5%	24,7%	23,1%	447,600	583,000	86.614	124.085	24.979
Talk Talk	282,50	-2,7%	2,5%	-7,2%	4,4%	-7,7%	261,000	334,300	1.629.095	2.107.612	3.408
TDC	48,65	4,6%	12,0%	-9,5%	1,3%	-7,5%	40,400	57,700	2.138.351	2.287.155	5.309
Telefonica	12,47	1,5%	10,3%	3,1%	2,8%	5,4%	10,760	12,935	79.103.330	47.718.050	56.751
Telenor	154,60	-1,2%	12,4%	9,1%	3,0%	6,9%	123,900	158,200	1.667.481	2.004.877	27.564
Tele2	96,90	0,5%	13,0%	20,7%	21,0%	33,0%	68,750	98,700	1.723.119	2.530.808	4.663
Telekom Austria	5,42	0,9%	-12,4%	-17,6%	-2,9%	6,9%	4,888	6,992	1.314.650	924.892	3.598
Teliasonera	51,90	0,9%	10,4%	4,7%	-4,3%	-3,1%	43,980	54,900	5.766.282	10.952.510	24.274
Vivendi	20,22	1,9%	10,1%	12,4%	15,1%	11,3%	16,446	20,290	4.304.902	5.457.893	27.260
Vodafone Group	227,80	1,1%	17,6%	11,3%	-2,6%	-5,5%	179,100	252,300	100.667.000	100.620.700	76.281
Ziggo	36,26	-9,8%	-2,8%	6,2%	14,6%	9,2%	30,500	40,885	450.096	791.233	7.254

* performance calculated on closing price

** n. of traded shares

Source: Bloomberg
LP

Brazil: Stock Performance of Main TLC Operators

Last Week Performance

Oi PN	18,8%
Oi ON	15,1%
Brazilian Equity - Bovespa Index	8,2%
Telefonica Brasil PN	5,7%
Telefonica Brasil ON	4,8%
America Movil	4,2%
Argentinean Equity - Merval Index	2,3%
Telecom Argentina - ADR	0,9%
TIM Participações	-2,2%
Telecom Argentina - "B shares"	-2,6%
Embratel ON	-2,9%
NET Servicos PN	-8,5%
Embratel PN	-13,5%

2014 Year-To-Date Performance

Embratel ON	97,4%
NET Servicos PN	92,6%
Embratel PN	85,1%
Argentinean Equity - Merval Index	85,1%
Telecom Argentina - "B shares"	67,4%
Telecom Argentina - ADR	29,6%
Telefonica Brasil PN	16,5%
Brazilian Equity - Bovespa Index	8,9%
Telefonica Brasil ON	8,7%
America Movil	8,1%
TIM Participações	1,9%
Oi ON	-55,7%
Oi PN	-57,7%

Last 1 Year Performance

Embratel ON	138,3%
Embratel PN	127,1%
Argentinean Equity - Merval Index	84,9%
NET Servicos PN	46,4%
Telecom Argentina - "B shares"	45,0%
Telefonica Brasil PN	18,3%
TIM Participações	12,6%
Telefonica Brasil ON	10,6%
America Movil	10,5%
Telecom Argentina - ADR	10,4%
Brazilian Equity - Bovespa Index	5,8%
Oi PN	-56,7%
Oi ON	-57,0%

Performance Summary of Main LatAm TLC Operators

Cl. Price 21-Nov-14	Performance ($\Delta\%$)*					Last 52 weeks		Daily average volume **		Market Cap. (mln)***
	1 week	1 month	6 months	1 year	from Jan. '14	Low Price	High Price	1 week	1 month	

BRAZIL

Index

Brazilian Equity - Bovespa Index	R\$ 56.084,04	8,2%	3,3%	7,1%	5,8%	8,9%	44.904,83	62.304,88	351.738.899	446.316.997	R\$ 1.756.392
----------------------------------	---------------	------	------	------	------	------	-----------	-----------	-------------	-------------	---------------

Peers

TIM Participações	R\$ 12,57	-2,2%	10,0%	7,1%	12,6%	1,9%	R\$ 10,19	R\$ 14,57	2.310.980	4.338.857	R\$ 30.432
--------------------------	------------------	--------------	--------------	-------------	--------------	-------------	------------------	------------------	------------------	------------------	-------------------

Oi ON	R\$ 1,60	15,1%	37,9%	-18,4%	-57,0%	-55,7%	R\$ 1,08	R\$ 4,89	2.878.900	5.128.934	R\$ 4.578
Oi PN	R\$ 1,52	18,8%	36,9%	-17,8%	-56,7%	-57,7%	R\$ 1,02	R\$ 4,62	29.700.680	42.606.750	R\$ 8.699
Telefonica Brasil ON	R\$ 43,48	4,8%	13,7%	10,9%	10,6%	8,7%	R\$ 36,49	R\$ 43,80	9.500	15.733	R\$ 16.591
Telefonica Brasil PN	R\$ 52,21	5,7%	9,8%	15,9%	18,3%	16,5%	R\$ 41,66	R\$ 52,54	784.420	933.183	R\$ 38.845
Embratel ON	R\$ 16,56	-2,9%	0,4%	-12,1%	138,3%	97,4%	R\$ 6,76	R\$ 23,88	200	573	R\$ 10.569
Embratel PN	R\$ 16,01	-13,5%	-5,8%	-13,5%	127,1%	85,1%	R\$ 7,00	R\$ 23,50	400	650	R\$ 9.496
NET Servicos PN	R\$ 43,00	-8,5%	2,4%	-4,2%	46,4%	92,6%	R\$ 18,98	R\$ 63,85	440	1.700	R\$ 10.736

ARGENTINA

Index

Argentinean Equity - Merval Index	9.976,67	2,3%	-8,2%	37,4%	84,9%	85,1%	5.105,48	12.599,42	440	1.700	ARS 1.018.738
-----------------------------------	----------	------	-------	-------	-------	-------	----------	-----------	-----	-------	---------------

Integrated

Telecom Argentina - "B shares"	ARS 51,90	-2,6%	-8,3%	20,1%	45,0%	67,4%	ARS 27,40	ARS 65,00	49.470	76.647	ARS 51.089
Telecom Argentina - ADR	\$22,35	0,9%	6,8%	10,2%	10,4%	29,6%	\$13,93	\$25,56	84.131	102.163	\$4.400

Nortel Inversora B shares - ADR	\$22,88	0,5%	2,1%	12,4%	-0,3%	15,0%	\$15,84	\$26,37	1.952	6.452	\$3.112
---------------------------------	---------	------	------	-------	-------	-------	---------	---------	-------	-------	---------

MEXICO

Index

Mexican Equity - Mexbol Index	44.633,28	2,0%	2,3%	6,7%	8,9%	4,5%	37.751,64	46.554,28	230.833.286	195.298.050	MXN 4.908.163
-------------------------------	-----------	------	------	------	------	------	-----------	-----------	-------------	-------------	---------------

Mobile/Integrated

America Movil	MXN 16,45	4,2%	0,5%	26,2%	10,5%	8,1%	MXN 12,39	MXN 17,64	80.362.780	60.396.100	MXN 1.123.826
---------------	-----------	------	------	-------	-------	------	-----------	-----------	------------	------------	---------------

TV

Grupo Televisa	MXN 100,97	4,2%	8,7%	18,0%	31,1%	28,3%	MXN 73,20	MXN 102,27	2.817.530	2.855.519	MXN 292.015
----------------	------------	------	------	-------	-------	-------	-----------	------------	-----------	-----------	-------------

* performance calculated on closing price

** n. of traded shares

*** For Telecom Argentina, reported market capitalization represents estimated market capitalization of all Classes of Shares (A,B,C - of which only Class B is listed).



European Telecoms Sector: Credit Outlook

Long-term Credit Ratings

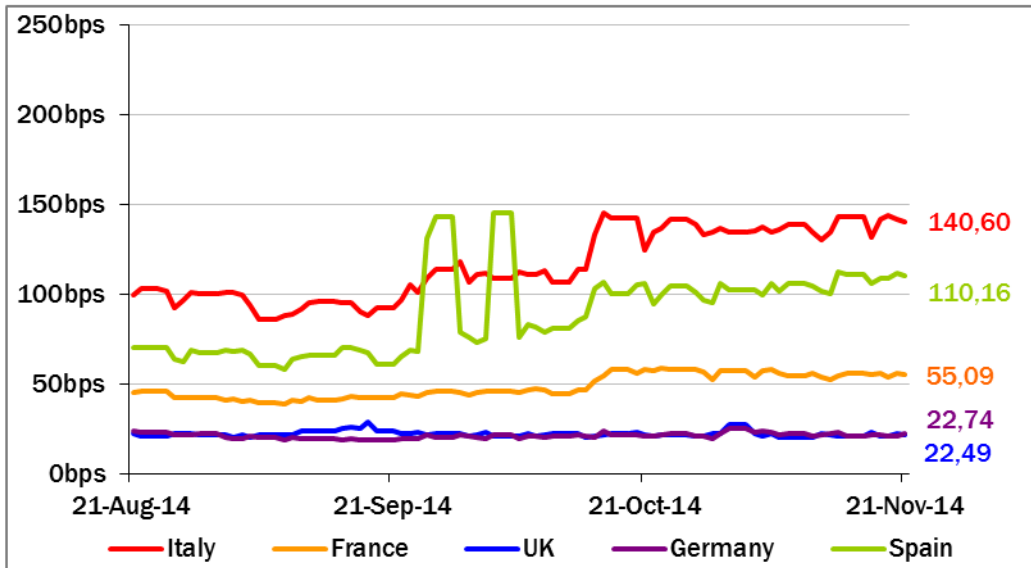
S&P Upgrades Telenor's rating to "A" from "A-"; with Stable Outlook (from Positive).

S&P expects Telenor's revenues and EBITDA to continue rising by low single digits in the coming years. At the same time, S&P anticipates that Telenor will maintain a strong balance sheet and generate solid and increasing cash flows. The Stable outlook reflects S&P's anticipation of Telenor's improving performance over the next two years, with Standard & Poor's-adjusted debt to EBITDA at about 2x or lower.

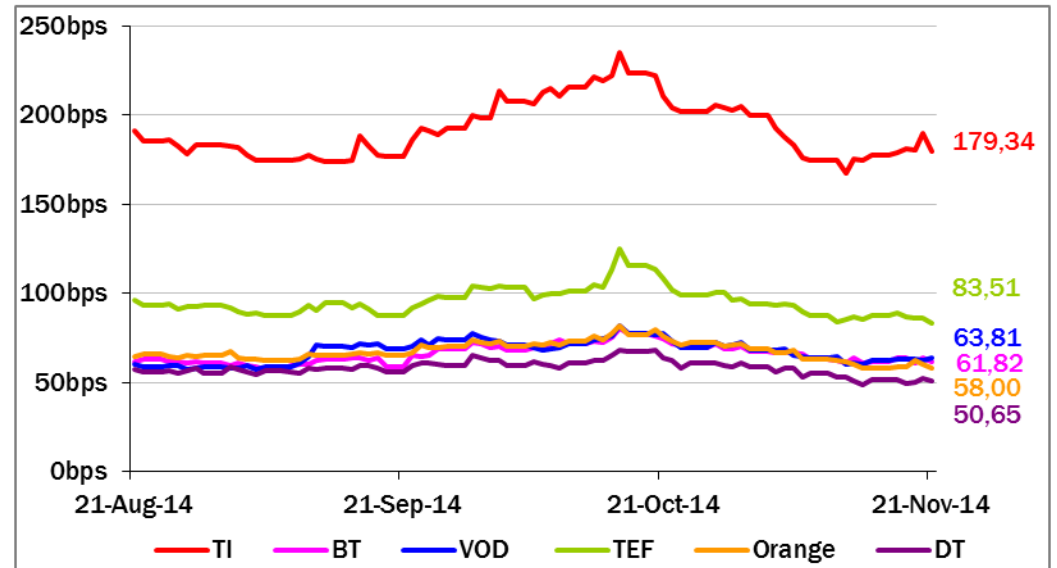
	Moody's		S&P		Fitch	
	rating	outlook	rating	outlook	rating	outlook
TELECOM ITALIA	Ba1	NEG	BB+	NEG	BBB-	NEG
BELGACOM	A1	STABLE	A	STABLE	n.a.	n.a.
BT GROUP	Baa2	POS	BBB	STABLE	BBB	POS
DEUTSCHE TELEKOM	Baa1	STABLE	BBB+	STABLE	BBB+	STABLE
ORANGE	Baa1	STABLE	BBB+	NEG	BBB+	NEG
KPN	Baa3	STABLE	BBB-	STABLE	BBB-	STABLE
OI GROUP	Ba1	NEG	BB+	STABLE	BB+	STABLE
SWISSCOM	A2	STABLE	A	STABLE	n.a.	n.a.
TELEFONICA	Baa2	NEG	BBB	STABLE	BBB+	NEG
TELEKOM AUSTRIA	Baa2	STABLE	BBB	STABLE	n.a.	n.a.
TELIASONERA	A3	NEG	A-	STABLE	A-	STABLE
TELENOR	A3	STABLE	A	STABLE	n.a.	n.a.
VODAFONE GROUP	Baa1	STABLE	A-	NEG	BBB+	STABLE
WIND TELECOMUNICAZIONI	B2	STABLE	BB-	STABLE	B+	STABLE
VIMPELCOM	Ba3	STABLE	BB	POS	n.a.	n.a.

5 Years CDS levels

Countries



TLC Operators





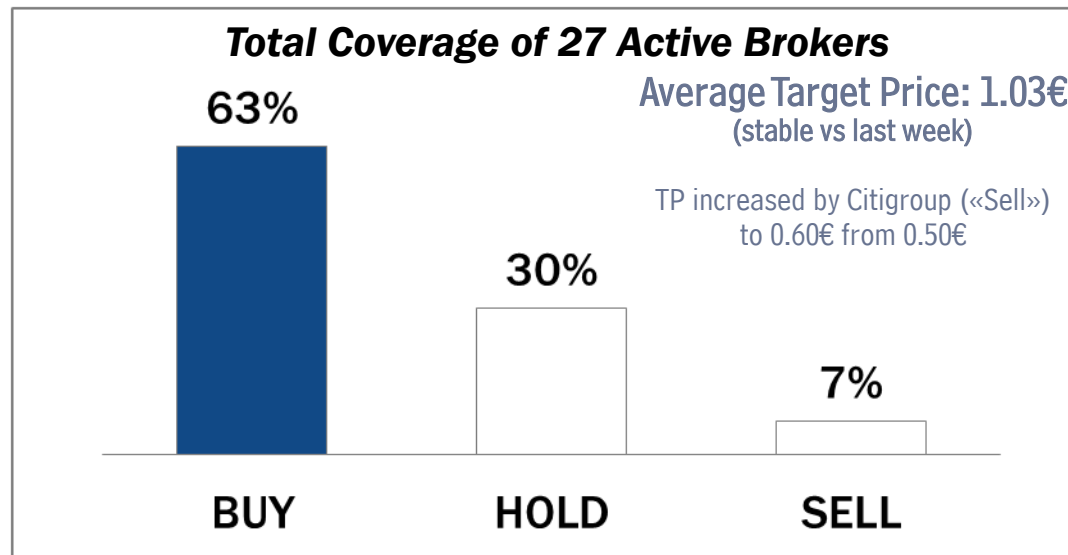
Telecom Italia Group – Weekly Performance: Price (€) and Volumes (mln)

TI Ordinary Shares

TI Saving Shares

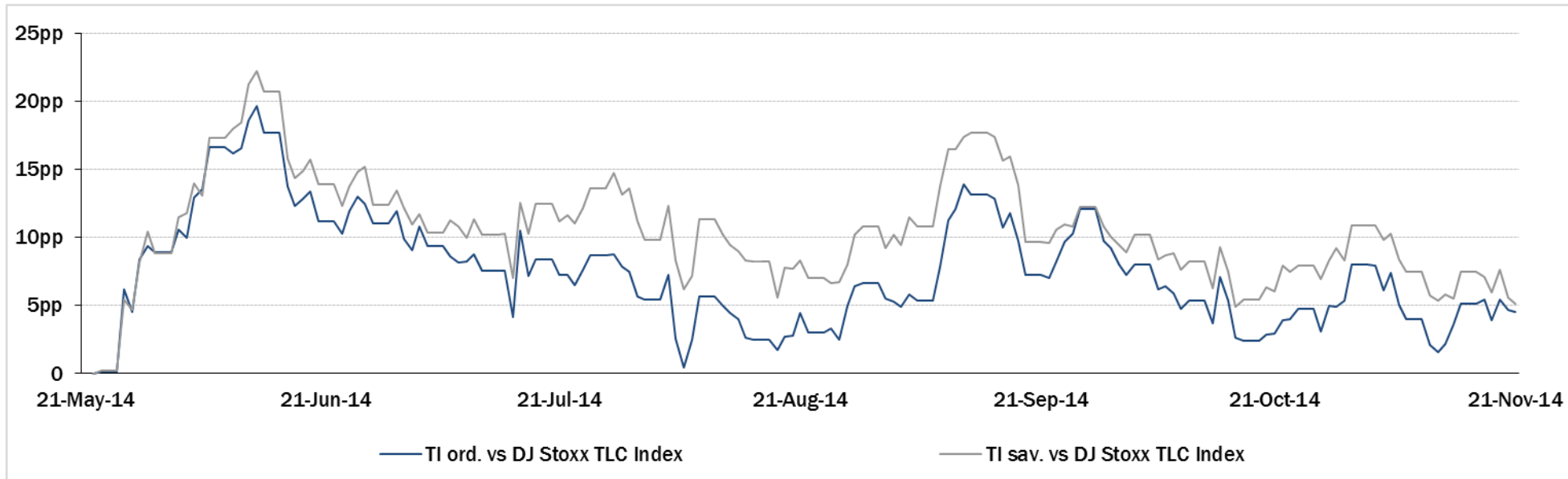


Analysts' Recommendations on TI Ords

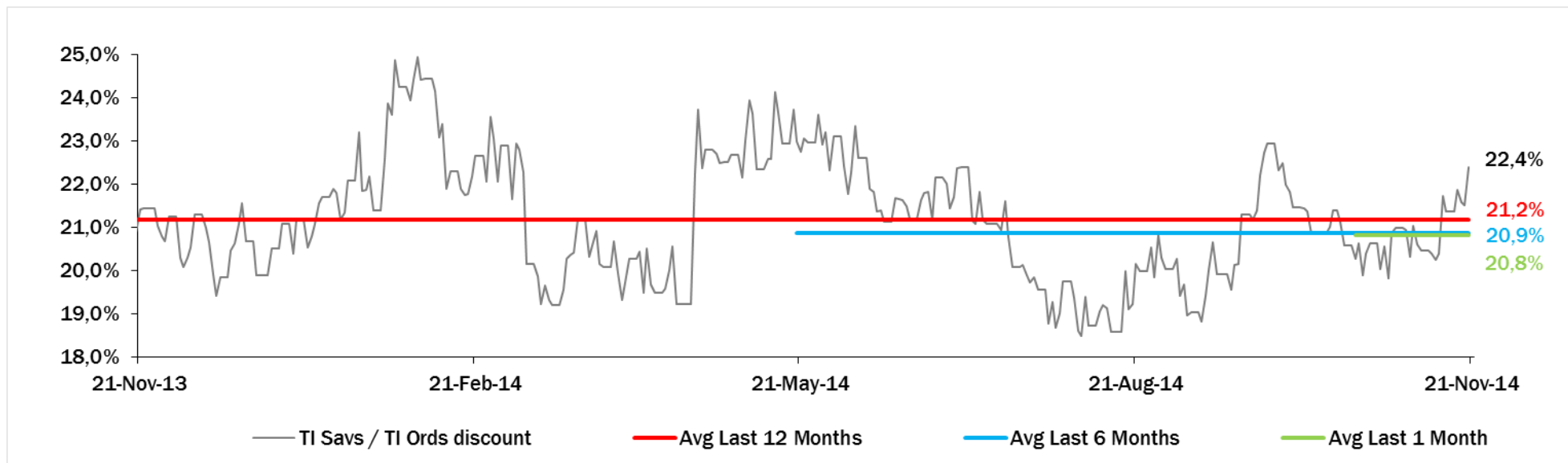




Relative Performance Last 6 Months of Telecom Italia Shares vs TLC Sector



Evolution of the spread between Telecom Italia shares (TI Savs / TI Ords) in the last 12 months



Performance Summary of FTSE MIB



Index	Cl. Price € 21-Nov-14	Performance (Δ%)*					Last 52 weeks		Daily average volume		Market** Cap. mil. Euro
		1 week	1 month	6 months	1 year	from Jan. '14	Low Price	High Price	1 week	1 month	
FTSE MIB (Milan)	19.955	5,2%	4,7%	-3,1%	5,9%	5,2%	17.556	22.590	706.163.469	930.363.703	395.507
FTSE Italia All-Share (Milan)	21.038	5,1%	4,5%	-3,9%	4,9%	4,1%	18.587	23.913	854.582.899	1.173.198.144	475.900
Stocks FTSE MIB											
A2A SPA	0,84	5,4%	12,8%	-0,7%	-0,6%	-1,8%	0,68	1,03	14.990.000	18.330.670	2.618
AUTOGRILL SPA	5,70	-1,5%	4,3%	-12,4%	-6,6%	-7,2%	4,87	7,77	3.817.817	2.884.275	1.450
ATLANTIA SPA	19,69	7,0%	9,8%	6,4%	23,3%	20,7%	15,57	21,50	2.461.098	2.801.900	16.260
AZIMUT HOLDING SPA	17,45	2,4%	-1,8%	-10,5%	0,6%	-9,2%	16,02	25,92	1.028.943	1.278.475	2.500
BANCA MONTE DEI PASCHI SIENA	0,67	0,3%	-23,2%	-49,7%	-50,2%	-38,5%	0,58	2,73	58.914.190	147.379.200	3.449
BANCO POPOLARE SC	10,42	8,0%	-12,9%	-14,9%	1,9%	-1,3%	8,90	16,41	5.223.812	6.403.566	3.774
BANCA POPOL EMILIA ROMAGNA	5,37	6,8%	-14,7%	-18,2%	-13,7%	-14,9%	4,90	8,87	6.713.387	6.212.494	2.573
BUZZI UNICEM SPA	12,00	11,3%	12,9%	0,9%	-0,9%	-8,5%	9,45	15,20	1.662.419	1.340.753	2.271
CNH INDUSTRIAL NV	6,75	5,5%	7,8%	-14,2%	-19,4%	-18,5%	5,83	8,87	3.555.147	6.828.515	9.141
DAVIDE CAMPARI-MILANO SPA	5,51	4,8%	1,7%	-9,2%	-9,1%	-9,4%	5,04	6,44	1.372.172	1.556.384	3.200
ENEL GREEN POWER SPA	1,90	2,5%	2,5%	-7,1%	5,3%	3,5%	1,65	2,19	13.197.770	10.547.550	9.480
ENEL SPA	3,77	2,2%	0,8%	-6,8%	14,2%	18,9%	2,98	4,49	41.937.190	51.255.130	35.488
ENI SPA	17,19	5,9%	5,5%	-6,5%	-4,3%	-1,7%	15,31	20,46	13.276.800	19.335.500	62.472
EXOR SPA	35,07	3,1%	22,3%	11,8%	27,4%	21,3%	26,62	35,08	595.212	677.997	8.635
FIAT CHRYSLER AUTOMOBILES NV	9,92	0,5%	34,6%	n.a.	n.a.	n.a.	6,57	10,25	19.176.670	n.a.	11.898
FINMECCANICA SPA	7,56	0,2%	7,3%	31,4%	43,7%	37,3%	4,85	7,89	5.985.764	5.831.884	4.371
ASSICURAZIONI GENERALI	17,20	5,8%	11,0%	8,0%	3,2%	0,6%	14,40	17,70	7.846.079	8.862.686	26.778
GTECH SPA	18,68	1,0%	1,5%	-5,4%	-17,6%	-15,7%	15,24	24,13	360.121	674.355	3.268
INTESA SANPAOLO	2,36	7,0%	4,0%	2,8%	36,1%	31,8%	1,63	2,66	154.554.500	198.236.000	38.635
LUXOTTICA GROUP SPA	41,79	3,4%	12,3%	2,4%	7,0%	7,3%	34,74	43,30	645.963	1.294.564	20.118
MEDIOBANCA SPA	7,06	5,1%	6,5%	2,8%	16,0%	11,0%	5,74	8,49	5.600.114	6.410.813	6.082
MEDIOLANUM SPA	5,52	3,1%	5,4%	-2,8%	-13,3%	-12,5%	4,75	7,19	2.835.733	3.004.261	4.065
MONCLER SPA	11,69	3,0%	8,4%	-6,5%	n.a.	-26,0%	10,01	16,60	711.068	983.459	2.923
MEDIASET SPA	3,13	6,2%	13,6%	-6,5%	-4,0%	-9,2%	2,42	4,45	12.359.820	12.092.880	3.697
PIRELLI & C.	11,35	6,1%	7,4%	-2,7%	1,0%	-9,8%	9,61	12,99	2.312.179	3.084.622	5.526
BANCA POPOLARE DI MILANO	0,57	7,5%	-6,0%	-3,3%	41,4%	41,9%	0,36	0,74	74.981.840	104.277.500	2.501
PRYSMIAN SPA	14,93	7,7%	11,1%	-8,6%	-20,1%	-20,2%	12,34	19,79	1.473.038	1.559.966	3.225
SALVATORE FERRAGAMO SPA	21,26	4,6%	11,5%	-5,6%	-19,8%	-23,1%	17,61	29,85	803.725	746.250	3.580
SAIPEM SPA	13,35	4,3%	-14,1%	-30,5%	-21,5%	-14,2%	11,51	21,00	4.075.222	4.983.925	5.893
SNAM SPA	4,23	4,5%	3,4%	2,5%	9,3%	4,1%	3,71	4,58	10.128.820	16.880.080	14.318
STMICROELECTRONICS NV	5,90	5,7%	9,8%	-15,2%	1,5%	2,1%	4,89	7,42	5.975.768	7.218.574	5.369
TENARIS SA	14,95	2,5%	-1,4%	-5,0%	-10,7%	-5,9%	14,10	18,29	3.101.550	3.230.869	17.649
TELECOM ITALIA SPA	0,9195	2,1%	14,6%	10,6%	33,9%	27,5%	0,65	1,01	103.918.300	120.158.100	16.674
TOD'S SPA	73,00	9,4%	1,2%	-25,2%	-37,6%	-39,9%	64,20	127,60	219.657	200.594	2.234
TERNA SPA	3,89	2,8%	1,5%	2,4%	10,6%	7,0%	3,42	4,14	8.659.433	12.066.280	7.815
UBI BANCA SCPA	5,91	6,0%	-3,1%	-1,6%	16,9%	19,7%	4,58	7,55	8.717.018	12.037.080	5.329
UNICREDIT SPA	5,78	9,9%	1,1%	-3,3%	9,9%	7,3%	5,01	6,89	86.794.450	97.685.350	33.880
UNIPOLSAI SPA	2,29	5,0%	9,3%	-3,4%	23,6%	3,2%	1,77	2,72	12.581.670	8.084.945	6.344
WORLD DUTY FREE SPA	7,35	10,9%	14,1%	-24,3%	-14,9%	-19,6%	6,05	11,07	2.355.281	2.938.163	1.871
YOOX SPA	17,52	9,6%	10,9%	-22,2%	-42,2%	-46,3%	13,87	35,09	1.243.688	1.457.131	1.046

** for FTSE MIB stocks, market cap here reported on overall shares outstanding

Source: Bloomberg LP