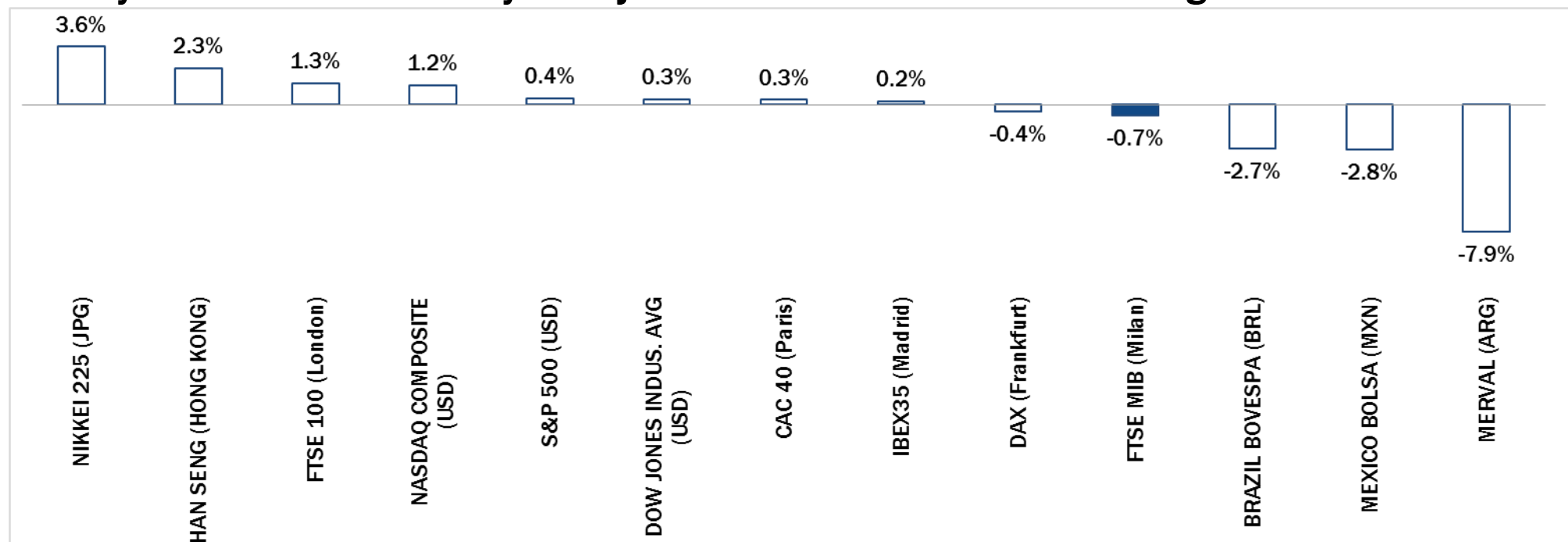


# Weekly Stock Market Report for Telecom Italia Retail Shareholders

November 10<sup>th</sup> – November 14<sup>th</sup>, 2014

## Weekly Performance Summary of Major Worldwide Market Stock Exchanges



Index Point as of 14-Nov-14	Performance (Δ%)*						Last 52 weeks		Daily average volume **		Market Cap. (mln. local cur.)
	1 week	1 month	6 months	1 year	from Jan. '14	Low Price	High Price	1 week	1 month		
<b>Europe</b>											
FTSE MIB (Milan)	18.965	-0,7%	1,4%	-8,2%	1,5%	0,0%	17.556	22.590	839.062.336	927.616.411	391.054
FTSE 100 (London)	6.654	1,3%	5,5%	-2,9%	-0,6%	-1,4%	6.073	6.905	707.569.869	868.888.742	1.819.069
DAX (Frankfurt)	9.253	-0,4%	4,5%	-3,9%	0,9%	-3,1%	8.355	10.051	80.749.898	110.307.775	911.892
CAC 40 (Paris)	4.202	0,3%	4,2%	-5,7%	-2,1%	-2,2%	3.789	4.599	117.540.090	156.303.092	1.132.976
IBEX35 (Madrid)	10.148	0,2%	1,9%	-3,2%	4,7%	2,3%	9.232	11.249	458.844.960	494.977.295	537.126
<b>America</b>											
DOW JONES INDUS. AVG (USD)	17.635	0,3%	7,7%	6,9%	10,5%	6,4%	15.341	17.705	70.980.088	93.104.702	5.027.547
S&P 500 (USD)	2.040	0,4%	8,1%	8,6%	13,4%	10,4%	1.738	2.046	443.940.685	570.134.548	18.621.650
NASDAQ COMPOSITE (USD)	4.689	1,2%	10,1%	14,6%	17,6%	12,3%	3.912	4.703	450.168.595	541.008.507	7.103.264
MEXICO BOLSA (MXN)	43.372	-2,8%	0,2%	3,5%	5,7%	1,5%	37.752	46.554	185.884.034	188.615.501	2.164.614
MERVAL (ARG)	9.750	-7,9%	-7,5%	41,7%	75,0%	80,9%	5.105	12.599	6.019.066	10.902.358	9.749
BRAZIL BOVESPA (BRL)	51.772	-2,7%	-7,1%	-4,1%	-3,1%	0,5%	44.905	62.305	314.334.266	466.049.359	1.697.596
<b>Asia</b>											
NIKKEI 225 (JPG)	17.491	3,6%	20,4%	24,1%	15,3%	7,4%	13.885	17.521	1.657.336.678	1.682.739.554	323.224.128
HAN SENG (HONG KONG)	24.087	2,3%	4,6%	6,1%	4,6%	3,4%	21.138	25.363	2.146.896.922	1.573.691.181	14.770.362

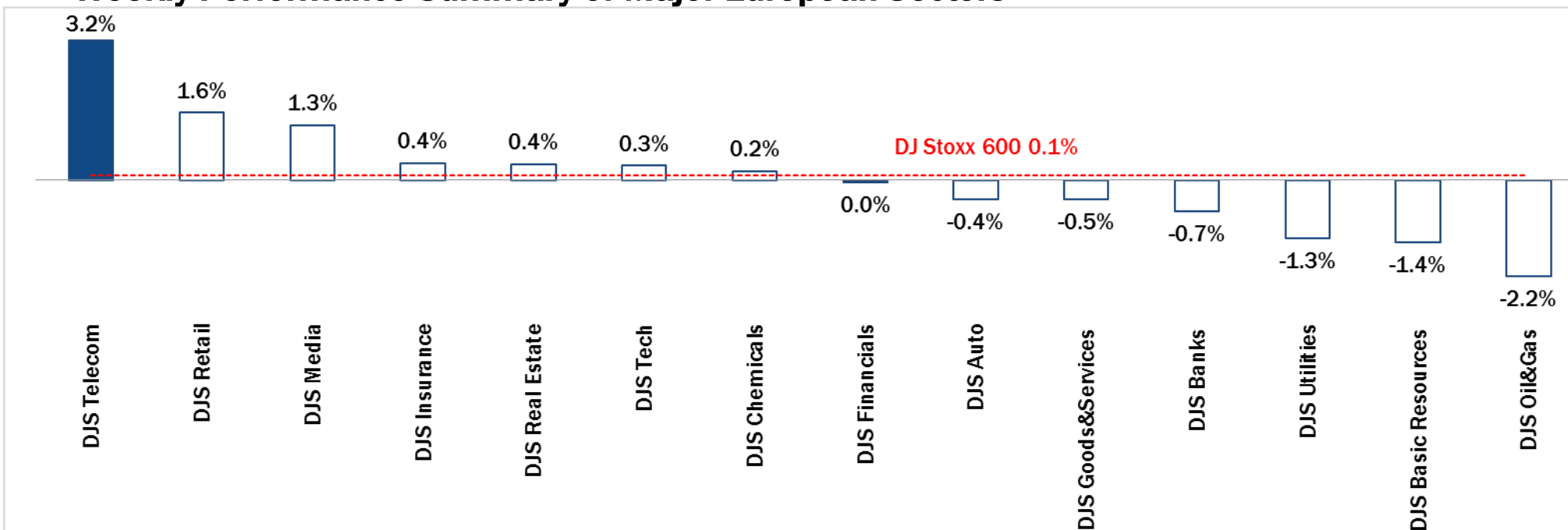
\* performance calculated on closing price

\*\* n. of traded shares

Source: Bloomberg LP

NB: Weekly performances are referred to last 5 open market sessions.

## Weekly Performance Summary of Major European Sectors



Index	Index Point as of 14-Nov-14	Performance (Δ%)*					Last 52 weeks		Daily average volume **		Market Cap. (mln. local cur.)
		1 week	1 month	6 months	1 year	from Jan. '14	Low Price	High Price	1 week	1 month	
<b>Index</b>											
DJ Stoxx 600	335,63	0,1%	5,3%	-1,0%	3,9%	2,2%	302,48	350,85	3.041.148.928	3.583.658.197	8.559.527,00
<b>Sectors</b>											
DJS Telecom	311,69	3,2%	12,6%	3,0%	6,3%	4,7%	265,32	312,96	448.459.430	359.343.562	429.398,88
DJS Auto	460,04	-0,4%	4,5%	-6,8%	-0,7%	-4,5%	407,83	536,66	40.768.852	49.827.274	259.780,50
DJS Banks	187,3	-0,7%	1,2%	-4,9%	-0,9%	-3,6%	173,86	209,5	1.338.775.731	1.759.276.237	1.162.585,13
DJS Basic Resources	389,21	-1,4%	0,6%	-6,3%	-4,3%	-2,9%	369,17	455,43	80.304.600	105.268.531	279.346,56
DJS Chemicals	756,05	0,2%	5,2%	-2,1%	2,8%	-0,2%	677,03	793,87	14.902.457	21.120.651	364.809,66
DJS Oil&Gas	310,6	-2,2%	0,7%	-14,2%	-7,6%	-7,3%	287,36	381,9	195.087.728	183.274.494	594.035,63
DJS Financials	356,35	0,0%	9,6%	3,4%	12,0%	3,7%	307,16	368,62	28.600.036	36.313.597	148.336,23
DJS Goods&Services	394,1	-0,5%	6,4%	-3,6%	-2,1%	-4,8%	351,98	425,9	149.572.634	187.164.445	878.895,81
DJS Insurance	240,7	0,4%	7,3%	7,2%	9,6%	5,5%	210,78	245	98.435.912	119.442.133	482.723,72
DJS Media	257,37	1,3%	8,5%	7,7%	4,1%	1,3%	226,72	260,77	58.492.736	62.588.252	232.219,63
DJS Tech	287,04	0,3%	4,9%	5,5%	1,3%	-1,2%	260,2	305,74	75.545.231	108.675.083	260.542,88
DJS Utilities	308,6	-1,3%	2,9%	0,3%	10,8%	10,9%	265,76	328,18	167.266.264	189.164.147	439.797,97
DJS Retail	296,02	1,6%	8,0%	-7,0%	-8,7%	-8,9%	259,46	331,27	126.284.419	138.045.214	303.684,78
DJS Real Estate	156,36	0,4%	7,3%	5,3%	12,9%	14,8%	129,71	158,47	16.788.006	21.412.356	122.119,35

\* performance calculated on closing price

\*\* n. of traded shares

Source: Bloomberg LP

NB: Weekly performances are referred to last 5 open market sessions.

## Europe: Stock Performance of Main TLC Operators

### Last Week Performance

Portugal Telecom	14.6%
Vodafone Group	8.9%
C&W Comm.	8.5%
Telenor	4.8%
TDC	4.2%
Telecom Italia Ord.	4.2%
Telefonica	4.0%
Deutsche Telekom	3.9%
Swisscom	3.6%
DJStoxx Telecom	3.2%
Belgacom	3.1%
Orange	3.1%
Telecom Italia Sav.	3.0%
Elisa	3.0%
TEF Deutschland	2.7%
Inmarsat	2.2%
Tele2	1.7%
Vivendi	1.1%
Teliasonera	1.0%
KPN	0.9%
Freenet	0.7%
Ziggo	0.5%
British Telecom	0.2%
Jazztel	0.0%
Iliad	-1.0%
Talk Talk	-1.1%
Telekom Austria	-2.8%
OTE	-2.9%

### 2014 Year-To-Date Performance

Jazztel	64.3%
Orange	41.7%
Belgacom	41.0%
Tele2	32.3%
Telecom Italia Sav.	28.6%
Telecom Italia Ord.	24.9%
Iliad	23.8%
Ziggo	21.1%
Swisscom	20.3%
Elisa	16.7%
KPN	10.4%
Vivendi	9.3%
Telenor	8.2%
Telekom Austria	6.0%
DJStoxx Telecom	4.7%
Telefonica	3.8%
Deutsche Telekom	0.7%
Freenet	0.1%
British Telecom	-1.4%
Inmarsat	-3.7%
Teliasonera	-3.9%
Talk Talk	-5.1%
Vodafone Group	-6.5%
OTE	-9.0%
TEF Deutschland	-9.0%
TDC	-11.5%
C&W Comm.	-13.7%
Portugal Telecom	-55.9%

### Last 1 Year Performance

Jazztel	64.6%
Belgacom	45.4%
Telecom Italia Sav.	35.2%
Telecom Italia Ord.	33.4%
Orange	31.6%
Ziggo	25.1%
Tele2	21.3%
Elisa	19.6%
Swisscom	19.5%
Deutsche Telekom	11.9%
Vivendi	11.7%
Iliad	11.1%
Freenet	10.1%
Inmarsat	8.3%
DJStoxx Telecom	6.3%
KPN	4.7%
Talk Talk	4.6%
Telenor	2.6%
C&W Comm.	2.4%
OTE	0.0%
Telefonica	-0.3%
British Telecom	-1.5%
Telekom Austria	-2.7%
Vodafone Group	-4.2%
Teliasonera	-5.2%
TDC	-5.4%
TEF Deutschland	-11.0%
Portugal Telecom	-56.8%

## Performance Summary of Main European TLC Operators

Cl. Price (local currency) 14-Nov-14	Performance ( $\Delta\%$ )*					Last 52 weeks		Daily average volume **		Market Cap. (all in €mln)
	1 week	1 month	6 months	1 year	from Jan. '14	Low Price	High Price	1 week	1 month	

### EUROPE

#### Index

DJStoxx Telecom	311,69	3,2%	12,6%	3,0%	6,3%	4,7%	265,32	312,96	448.459.430	359.343.562
-----------------	--------	------	-------	------	------	------	--------	--------	-------------	-------------

#### TLC Operators

<b>Telecom Italia Ord.</b>	<b>0,9005</b>	<b>4,2%</b>	<b>12,7%</b>	<b>4,4%</b>	<b>33,4%</b>	<b>24,9%</b>	<b>0,652</b>	<b>1,012</b>	<b>125.678.500</b>	<b>120.974.200</b>	<b>12.131</b>
<b>Telecom Italia Sav.</b>	<b>0,708</b>	<b>3,0%</b>	<b>12,7%</b>	<b>7,5%</b>	<b>35,2%</b>	<b>28,6%</b>	<b>0,499</b>	<b>0,792</b>	<b>14.879.560</b>	<b>16.832.170</b>	<b>4.266</b>
Altice	48,43	-4,2%	9,5%	6,9%	n.a.	n.a.	25,505	57,010	141.704	131.320	11.997
Belgacom	30,32	3,1%	17,5%	27,2%	45,4%	41,0%	19,975	30,825	720.092	1.003.222	10.249
British Telecom	374,20	0,2%	3,9%	3,1%	-1,5%	-1,4%	350,300	421,200	16.588.540	17.174.410	38.140
C&W Comm.	48,57	8,5%	10,5%	-7,7%	2,4%	-13,7%	42,910	58,500	9.250.429	8.695.579	1.774
Deutsche Telekom	12,52	3,9%	19,3%	-4,6%	11,9%	0,7%	10,065	13,150	13.532.750	15.101.570	56.763
Elisa	22,48	3,0%	21,0%	2,0%	19,6%	16,7%	17,580	22,850	311.334	566.173	3.762
Freenet	21,81	0,7%	17,7%	-1,3%	10,1%	0,1%	17,695	25,960	599.191	563.756	2.793
Orange	12,75	3,1%	18,9%	3,9%	31,6%	41,7%	8,388	13,135	10.788.520	10.573.200	33.773
OTE	8,80	-2,9%	-5,4%	-12,9%	0,0%	-9,0%	8,460	13,200	748.126	955.949	4.313
Iliad	184,35	-1,0%	12,2%	-10,9%	11,1%	23,8%	144,850	247,400	112.910	135.688	10.772
Inmarsat	728,00	2,2%	7,3%	2,5%	8,3%	-3,7%	653,000	774,500	657.965	744.405	4.084
Jazztel	12,78	0,0%	1,4%	18,3%	64,6%	64,3%	7,210	12,860	4.042.455	4.900.448	3.277
KPN	2,59	0,9%	15,7%	-1,4%	4,7%	10,4%	2,133	2,805	16.439.950	17.333.790	11.043
TEF Deutschland	3,99	2,7%	10,8%	-13,8%	-11,0%	-9,0%	3,466	5,052	2.246.799	3.093.035	11.868
Portugal Telecom	1,40	14,6%	0,8%	-50,4%	-56,8%	-55,9%	0,865	3,639	15.459.130	16.780.410	1.251
Swisscom	566,50	3,6%	9,9%	4,7%	19,5%	20,3%	447,600	575,000	119.191	132.105	24.430
Talk Talk	290,30	-1,1%	7,6%	2,1%	4,6%	-5,1%	261,000	334,300	2.939.987	2.180.913	3.469
TDC	46,53	4,2%	8,7%	-12,9%	-5,4%	-11,5%	40,400	57,700	1.871.237	2.273.296	5.076
Telefonica	12,28	4,0%	8,4%	2,5%	-0,3%	3,8%	10,760	12,935	95.252.720	38.309.200	55.887
Telenor	156,50	4,8%	17,8%	9,8%	2,6%	8,2%	123,900	158,200	1.602.208	2.001.393	27.785
Tele2	96,40	1,7%	16,4%	20,5%	21,3%	32,3%	68,750	97,300	1.469.525	2.547.352	4.642
Telekom Austria	5,37	-2,8%	-17,4%	-18,2%	-2,7%	6,0%	4,888	6,992	652.214	830.879	3.568
Teliasonera	51,45	1,0%	12,3%	4,7%	-5,2%	-3,9%	43,980	54,900	6.095.504	11.620.660	24.065
Vivendi	19,85	1,1%	12,8%	11,6%	11,7%	9,3%	16,446	20,290	4.048.186	5.560.034	26.761
Vodafone Group	225,30	8,9%	20,9%	3,8%	-4,2%	-6,5%	179,100	252,300	134.975.700	97.002.160	74.722
Ziggo	40,21	0,5%	12,9%	20,1%	25,1%	21,1%	30,500	40,770	2.204.027	795.147	8.041

\* performance calculated on closing price \*\* n. of traded shares

Source: Bloomberg LP

## Brazil: Stock Performance of Main TLC Operators

### Last Week Performance

Oi PN	9.2%
Oi ON	8.5%
Telecom Argentina - ADR	4.6%
Telefonica Brasil PN	0.9%
Telefonica Brasil ON	0.2%
Embratel ON	0.1%
TIM Participações	-1.9%
NET Servicos PN	-2.1%
Embratel PN	-2.6%
Brazilian Equity - Bovespa Index	-2.7%
Telecom Argentina - "B shares"	-3.1%
America Movil	-3.6%
Argentinean Equity - Merval Index	-7.9%

### 2014 Year-To-Date Performance

Embratel ON	114.5%
Embratel PN	113.9%
NET Servicos PN	110.5%
Argentinean Equity - Merval Index	80.9%
Telecom Argentina - "B shares"	71.9%
Telecom Argentina - ADR	28.5%
Telefonica Brasil PN	10.3%
TIM Participações	5.6%
Telefonica Brasil ON	4.0%
America Movil	3.4%
Brazilian Equity - Bovespa Index	0.5%
Oi ON	-61.2%
Oi PN	-63.5%

### Last 1 Year Performance

Embratel PN	155.2%
Embratel ON	146.6%
Argentinean Equity - Merval Index	75.0%
NET Servicos PN	59.5%
Telecom Argentina - "B shares"	45.4%
TIM Participações	16.5%
Telecom Argentina - ADR	10.5%
Telefonica Brasil PN	10.5%
America Movil	10.1%
Telefonica Brasil ON	3.6%
Brazilian Equity - Bovespa Index	-3.1%
Oi ON	-64.0%
Oi PN	-64.1%

## Performance Summary of Main LatAm TLC Operators

Cl. Price 14-Nov-14	Performance ( $\Delta\%$ )*					Last 52 weeks		Daily average volume **		Market Cap. (mln)***	
	1 week	1 month	6 months	1 year	from Jan. '14	Low Price	High Price	1 week	1 month		
<b>BRAZIL</b>											
<b>Index</b>											
Brazilian Equity - Bovespa Index	R\$ 51.772,40	-2,7%	-7,1%	-4,1%	-3,1%	0,5%	44.904,83	62.304,88	314.334.266	466.049.359	R\$ 1.697.596
<b>Peers</b>											
<b>TIM Participações</b>	<b>R\$ 13,02</b>	<b>-1,9%</b>	<b>14,6%</b>	<b>9,1%</b>	<b>16,5%</b>	<b>5,6%</b>	<b>R\$ 10,19</b>	<b>R\$ 14,57</b>	<b>1.554.200</b>	<b>4.583.430</b>	<b>R\$ 31.522</b>
Oi ON	R\$ 1,40	8,5%	-1,4%	-28,2%	-64,0%	-61,2%	R\$ 1,08	R\$ 4,89	4.214.340	5.688.990	R\$ 4.006
Oi PN	R\$ 1,31	9,2%	-3,0%	-28,4%	-64,1%	-63,5%	R\$ 1,02	R\$ 4,62	40.865.320	44.644.110	R\$ 7.497
Telefonica Brasil ON	R\$ 41,60	0,2%	2,6%	1,6%	3,6%	4,0%	R\$ 36,49	R\$ 43,80	4.900	15.123	R\$ 15.874
Telefonica Brasil PN	R\$ 49,45	0,9%	0,7%	6,9%	10,5%	10,3%	R\$ 41,66	R\$ 52,38	569.060	966.840	R\$ 36.792
Embratel ON	R\$ 18,00	0,1%	9,1%	9,1%	146,6%	114,5%	R\$ 6,76	R\$ 23,88	180	570	R\$ 11.488
Embratel PN	R\$ 18,50	-2,6%	8,7%	15,6%	155,2%	113,9%	R\$ 7,00	R\$ 23,50	160	737	R\$ 10.973
NET Servicos PN	R\$ 47,00	-2,1%	0,1%	30,6%	59,5%	110,5%	R\$ 18,98	R\$ 63,85	320	1.680	R\$ 11.734
<b>ARGENTINA</b>											
<b>Index</b>											
Argentinean Equity - Merval Index	9.749,70	-7,9%	-7,5%	41,7%	75,0%	80,9%	5.105,48	12.599,42	320	1.680	ARS 1.049.478
<b>Integrated</b>											
<b>Telecom Argentina - "B shares"</b>	<b>ARS 53,30</b>	<b>-3,1%</b>	<b>1,5%</b>	<b>37,0%</b>	<b>45,4%</b>	<b>71,9%</b>	<b>ARS 27,40</b>	<b>ARS 65,00</b>	<b>37.396</b>	<b>84.827</b>	<b>ARS 52.468</b>
<b>Telecom Argentina - ADR</b>	<b>\$22,15</b>	<b>4,6%</b>	<b>11,5%</b>	<b>15,5%</b>	<b>10,5%</b>	<b>28,5%</b>	<b>\$13,93</b>	<b>\$25,56</b>	<b>70.131</b>	<b>104.694</b>	<b>\$4.361</b>
Nortel Inversora B shares - ADR	\$22,76	-2,2%	5,6%	15,0%	-1,1%	14,4%	\$15,84	\$26,37	5.416	6.664	\$3.095
<b>MEXICO</b>											
<b>Index</b>											
Mexican Equity - Mexbol Index	43.372,01	-2,8%	0,2%	3,5%	5,7%	1,5%	37.751,64	46.554,28	185.884.034	188.615.501	MXN 4.827.803
<b>Mobile/Integrated</b>											
America Movil	MXN 15,74	-3,6%	-3,0%	20,5%	10,1%	3,4%	MXN 12,39	MXN 17,64	71.834.600	57.018.460	MXN 1.070.747
<b>TV</b>											
Grupo Televisa	MXN 96,88	1,9%	6,5%	13,7%	24,2%	23,1%	MXN 73,20	MXN 99,21	2.463.240	2.787.823	MXN 280.187

\* performance calculated on closing price

\*\* n. of traded shares

\*\*\* For Telecom Argentina, reported market capitalization represents estimated market capitalization of all Classes of Shares (A,B,C - of which only Class B is listed).



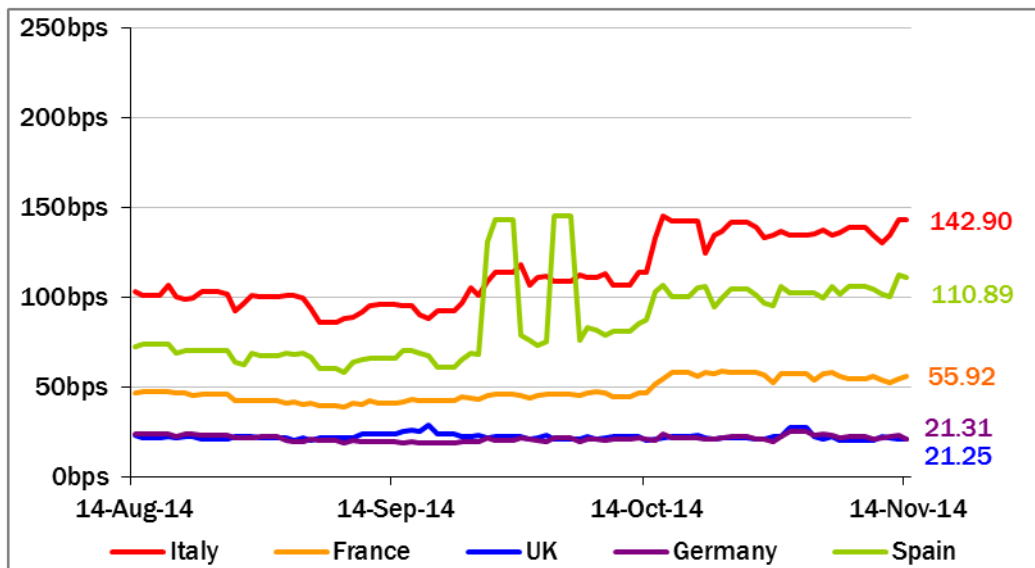
# European Telecoms Sector: Credit Outlook

## Long-term Credit Ratings

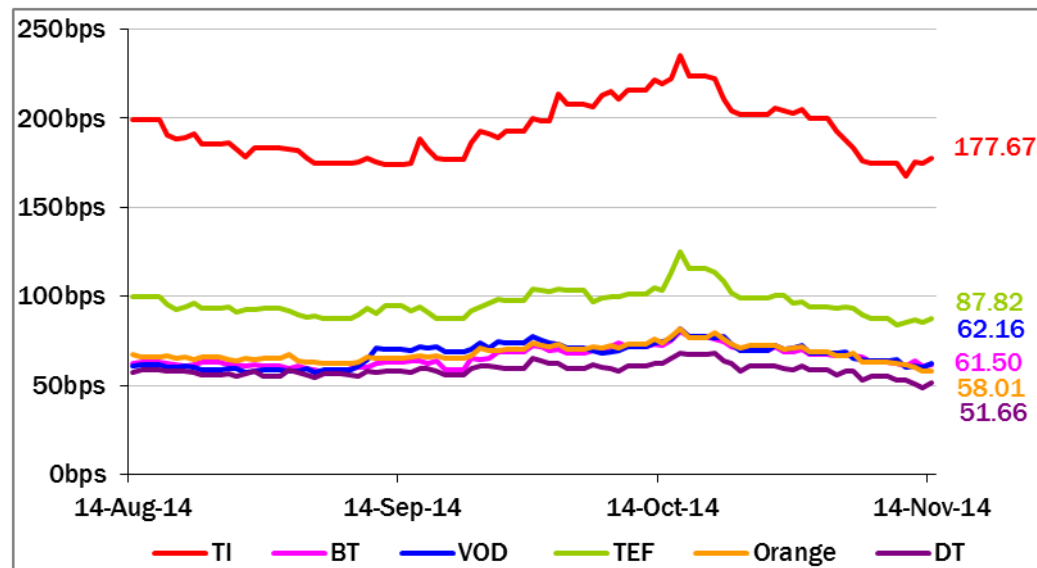
	Moody's		S&P		Fitch	
	rating	outlook	rating	outlook	rating	outlook
<b>TELECOM ITALIA</b>	<b>Ba1</b>	<b>NEG</b>	<b>BB+</b>	<b>NEG</b>	<b>BBB-</b>	<b>NEG</b>
BELGACOM	A1	STABLE	A	STABLE	n.a.	n.a.
BT GROUP	Baa2	POS	BBB	STABLE	BBB	POS
DEUTSCHE TELEKOM	Baa1	STABLE	BBB+	STABLE	BBB+	STABLE
ORANGE	Baa1	STABLE	BBB+	NEG	BBB+	NEG
KPN	Baa3	STABLE	BBB-	STABLE	BBB-	STABLE
OI GROUP	Ba1	NEG	BB+	STABLE	BB+	STABLE
SWISSCOM	A2	STABLE	A	STABLE	n.a.	n.a.
TELEFONICA	Baa2	NEG	BBB	STABLE	BBB+	NEG
TELEKOM AUSTRIA	Baa2	STABLE	BBB	STABLE	n.a.	n.a.
TELIASONERA	A3	NEG	A-	STABLE	A-	STABLE
TELENOR	A3	STABLE	A-	POS	n.a.	n.a.
VODAFONE GROUP	Baa1	STABLE	A-	NEG	BBB+	STABLE
WIND TELECOMUNICAZIONI	B2	STABLE	BB-	STABLE	B+	STABLE
VIMPELCOM	Ba3	STABLE	BB	POS	n.a.	n.a.

### 5 Years CDS levels

#### Countries



#### TLC Operators



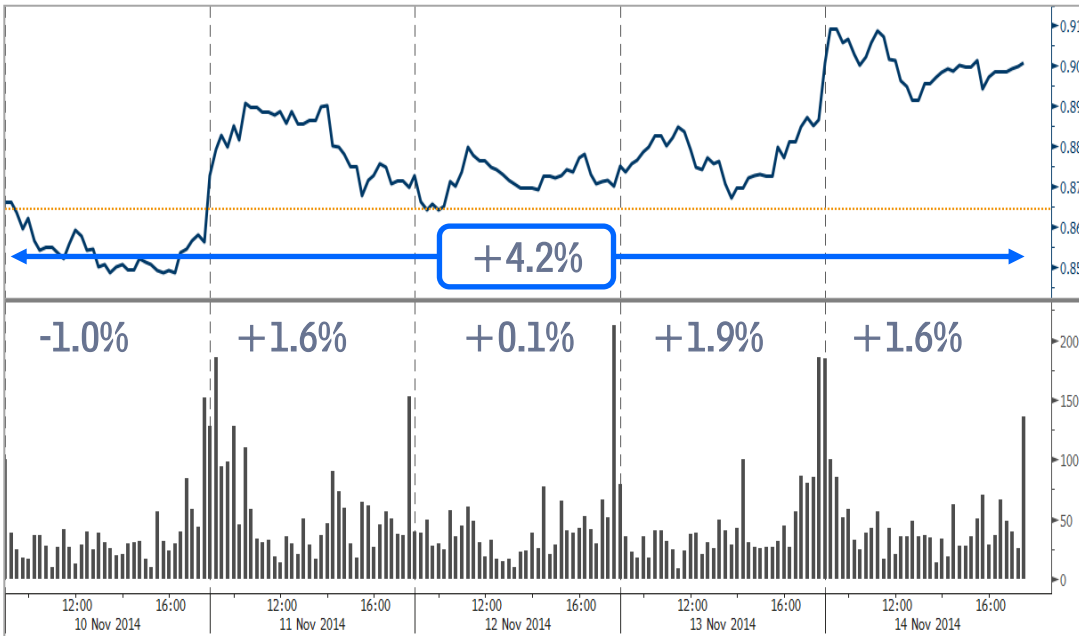




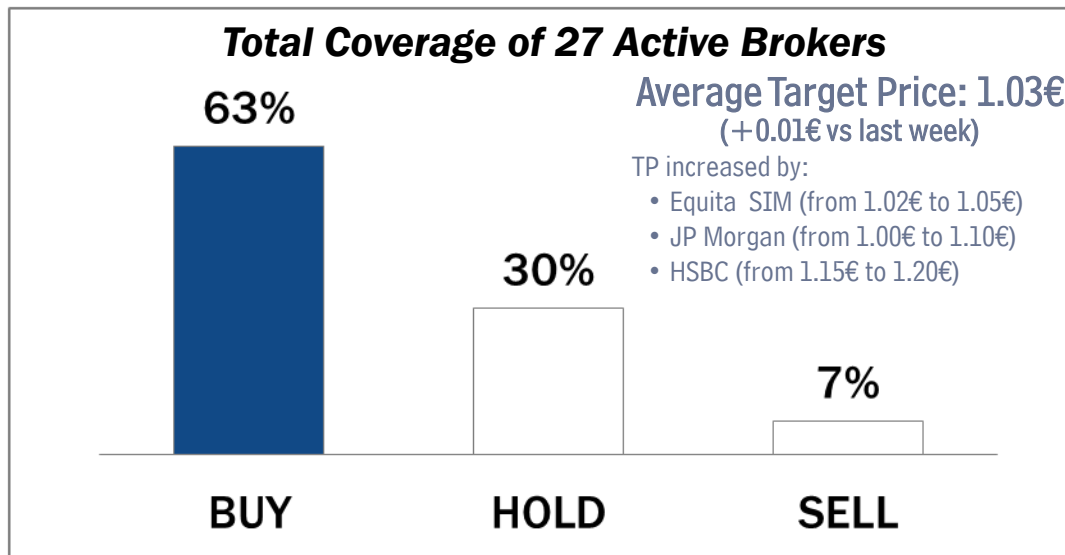
# Telecom Italia Group – Weekly Performance: Price (€) and Volumes (mln)

## TI Ordinary Shares

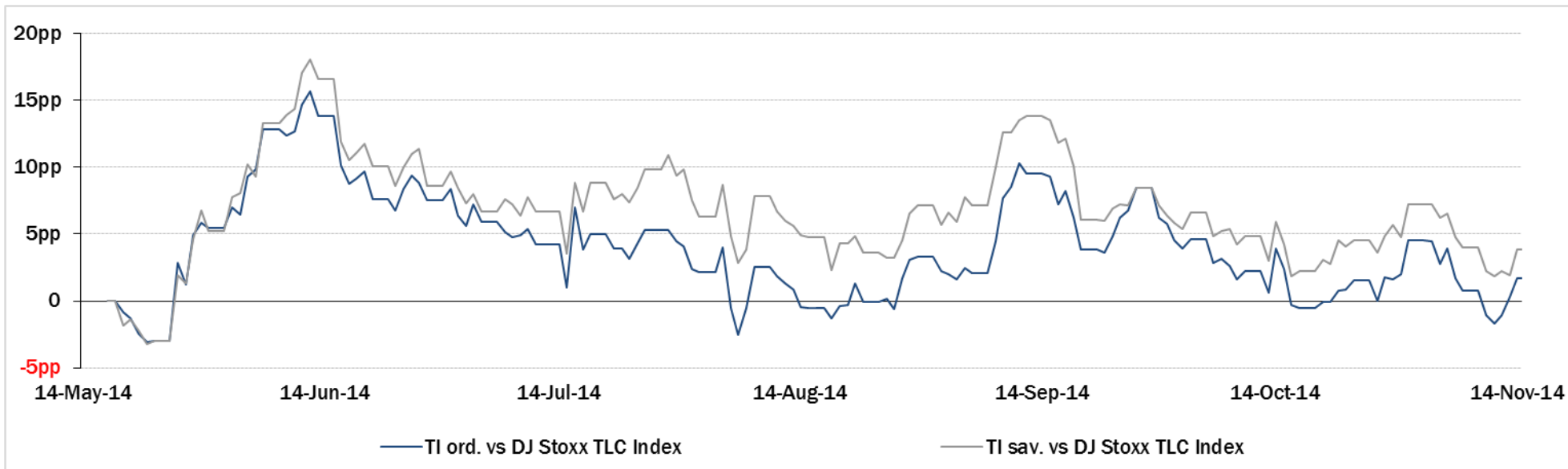
## TI Saving Shares



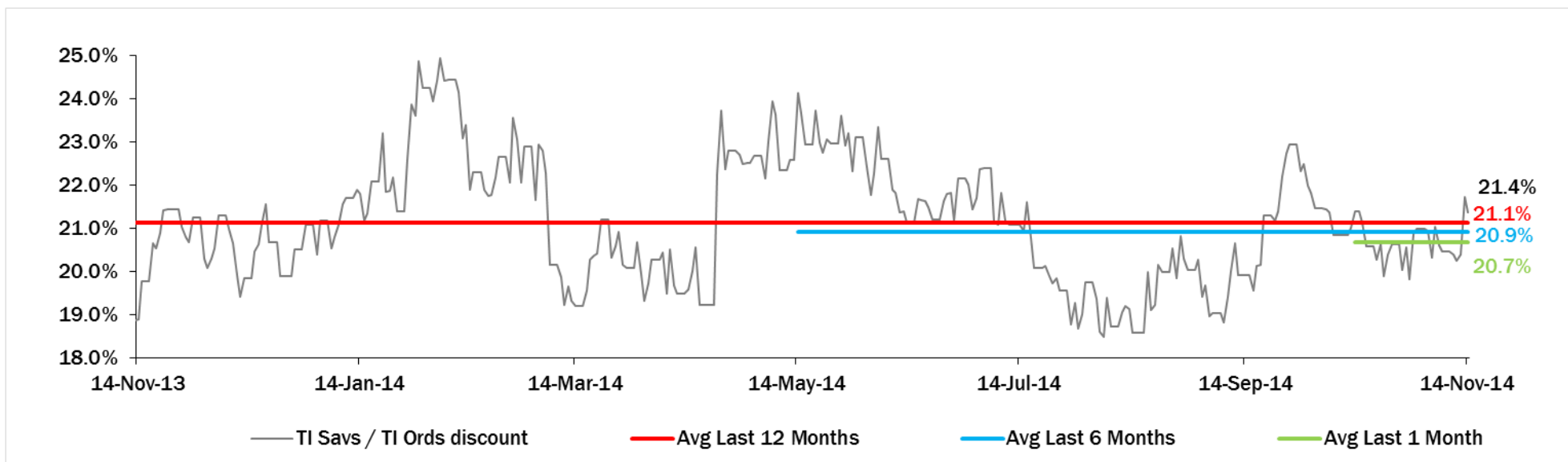
## Analysts' Recommendations on TI Ords



## Relative Performance Last 6 Months of Telecom Italia Shares vs TLC Sector



## Evolution of the spread between Telecom Italia shares (TI Savs / TI Ords ) in the last 12 months



## Performance Summary of FTSE MIB



Index	Cl. Price € 14-Nov-14	Performance (Δ%)*					Last 52 weeks		Daily average volume		Market** Cap. mil. Euro
		1 week	1 month	6 months	1 year	from Jan. '14	Low Price	High Price	1 week	1 month	
<b>FTSE MIB (Milan)</b>	<b>18.965</b>	<b>-0,7%</b>	<b>1,4%</b>	<b>-8,2%</b>	<b>1,5%</b>	<b>0,0%</b>	<b>17.556</b>	<b>22.590</b>	<b>839.062.336</b>	<b>927.616.411</b>	<b>391.054</b>
FTSE Italia All-Share (Milan)	20.019	-0,7%	1,2%	-8,9%	0,7%	-0,9%	18.587	23.913	1.001.228.902	1.187.915.072	469.497
<b>Stocks FTSE MIB</b>											
A2A SPA	0,79	1,9%	11,5%	-2,3%	-1,9%	-6,8%	0,68	1,03	16.187.900	18.688.900	2.483
AUTOGRILL SPA	5,79	12,2%	12,1%	-8,5%	-8,6%	-5,8%	4,87	7,77	3.042.034	2.781.627	1.472
ATLANTIA SPA	18,41	-0,1%	6,5%	-2,5%	14,5%	12,9%	15,57	21,50	2.114.524	2.859.663	15.203
AZIMUT HOLDING SPA	17,04	-6,7%	-0,2%	-7,8%	-2,6%	-11,3%	16,02	25,92	1.642.727	1.268.750	2.441
BANCA MONTE DEI PASCHI SIENA	0,67	0,7%	-24,9%	-50,8%	-50,8%	-38,7%	0,58	2,73	82.863.940	147.257.100	3.438
BANCO POPOLARE SC	9,65	-10,2%	-8,8%	-18,5%	-1,4%	-8,6%	8,90	16,41	6.804.142	6.316.262	3.493
BANCA POPOL EMILIA ROMAGNA	5,03	-9,5%	-10,4%	-19,1%	-18,5%	-20,3%	4,93	8,87	7.793.631	5.821.727	2.410
BUZZI UNICEM SPA	10,78	-0,2%	9,4%	-8,3%	-12,9%	-17,8%	9,45	15,20	917.620	1.258.104	2.049
CNH INDUSTRIAL NV	6,40	-1,5%	4,9%	-16,9%	-24,1%	-22,8%	5,83	8,87	3.187.638	7.414.601	8.667
DAVIDE CAMPARI-MILANO SPA	5,26	-5,5%	0,1%	-12,1%	-14,5%	-13,5%	5,04	6,44	1.951.930	1.544.210	3.055
ENEL GREEN POWER SPA	1,85	-2,3%	3,0%	-10,2%	3,4%	1,0%	1,65	2,19	11.589.110	10.326.640	9.245
ENEL SPA	3,69	-3,4%	2,0%	-7,7%	12,1%	16,4%	2,98	4,49	50.349.630	51.317.850	34.736
ENI SPA	16,23	-1,1%	1,4%	-12,3%	-10,1%	-7,2%	15,31	20,46	14.421.440	19.960.740	58.983
EXOR SPA	34,00	3,3%	23,4%	13,3%	21,8%	17,6%	26,62	35,08	532.390	655.217	8.372
FIAT CHRYSLER AUTOMOBILES NV	9,88	12,6%	43,6%	n.a.	n.a.	n.a.	6,57	9,99	22.291.420	n.a.	11.912
FINMECCANICA SPA	7,55	0,9%	14,4%	31,6%	43,7%	37,1%	4,85	7,89	5.764.318	5.587.282	4.362
ASSICURAZIONI GENERALI	16,25	-0,3%	8,2%	-0,9%	-0,9%	-5,0%	14,40	17,70	6.369.932	8.618.080	25.299
GTECH SPA	18,50	3,9%	1,7%	-10,7%	-17,9%	-16,5%	15,24	24,13	407.072	698.764	3.237
INTESA SANPAOLO	2,21	0,0%	4,0%	0,5%	30,1%	23,2%	1,63	2,66	190.720.200	198.338.800	36.137
LUXOTTICA GROUP SPA	40,43	0,6%	13,2%	-0,6%	4,3%	3,8%	34,74	43,30	673.484	1.304.137	19.463
MEDIOBANCA SPA	6,72	-1,7%	11,2%	2,1%	9,6%	5,7%	5,74	8,49	5.238.994	6.236.335	5.789
MEDIOLANUM SPA	5,35	-0,5%	8,0%	-8,2%	-14,8%	-15,1%	4,75	7,19	2.538.306	2.879.639	3.943
MONCLER SPA	11,35	7,5%	9,1%	-5,3%	n.a.	-28,2%	10,01	16,60	1.511.832	1.024.552	2.838
MEDIASET SPA	2,95	12,7%	15,3%	-7,1%	-13,4%	-14,5%	2,42	4,45	15.085.630	11.897.690	3.480
PIRELLI & C.	10,70	0,3%	8,3%	-6,9%	-1,0%	-14,9%	9,61	12,99	2.251.946	3.160.796	5.209
BANCA POPOLARE DI MILANO	0,53	-4,4%	-6,4%	-4,0%	36,2%	32,0%	0,36	0,74	97.098.690	103.108.100	2.328
PRYSMIAN SPA	13,86	-5,1%	7,6%	-13,3%	-24,9%	-25,9%	12,34	19,79	1.499.017	1.547.693	2.994
SALVATORE FERRAGAMO SPA	20,33	10,6%	10,7%	-10,8%	-19,6%	-26,5%	17,61	29,85	1.053.828	773.105	3.424
SAIPEM SPA	12,80	0,6%	-12,9%	-31,1%	-27,6%	-17,7%	11,51	21,00	4.970.525	4.697.246	5.651
SNAM SPA	4,05	1,5%	1,5%	-6,0%	6,6%	-0,3%	3,71	4,58	11.175.160	16.821.910	13.702
STMICROELECTRONICS NV	5,58	1,4%	7,4%	-18,8%	0,5%	-3,5%	4,89	7,42	4.016.705	6.997.692	5.078
TENARIS SA	14,59	-2,7%	-4,3%	-6,0%	-13,5%	-8,1%	14,45	18,29	2.546.342	3.156.733	17.224
<b>TELECOM ITALIA SPA</b>	<b>0,9005</b>	<b>4,2%</b>	<b>12,7%</b>	<b>4,4%</b>	<b>33,4%</b>	<b>24,9%</b>	<b>0,65</b>	<b>1,01</b>	<b>125.678.500</b>	<b>120.974.200</b>	<b>16.397</b>
TOD'S SPA	66,70	-4,7%	-3,1%	-32,7%	-43,0%	-45,1%	64,20	127,60	284.201	189.996	2.042
TERNA SPA	3,78	0,1%	1,6%	-2,0%	5,1%	4,1%	3,42	4,14	9.506.631	11.910.200	7.602
UBI BANCA SCPA	5,58	-2,5%	-3,4%	-3,5%	14,6%	12,9%	4,58	7,55	10.996.240	11.965.650	5.027
UNICREDIT SPA	5,26	-4,5%	-3,2%	-9,9%	2,7%	-2,3%	5,01	6,89	101.462.500	95.763.700	30.831
UNIPOLSAI SPA	2,18	7,0%	9,2%	-8,4%	18,7%	-1,7%	1,77	2,72	9.614.417	7.398.584	6.069
WORLD DUTY FREE SPA	6,63	-1,1%	2,6%	-28,5%	-22,7%	-27,5%	6,05	11,07	1.718.767	3.546.172	1.686
YOOX SPA	15,98	5,0%	7,5%	-25,9%	-44,5%	-51,0%	13,87	35,09	1.189.012	1.416.603	954

\*\* for FTSE MIB stocks, market cap here reported on overall shares outstanding

Source: Bloomberg LP