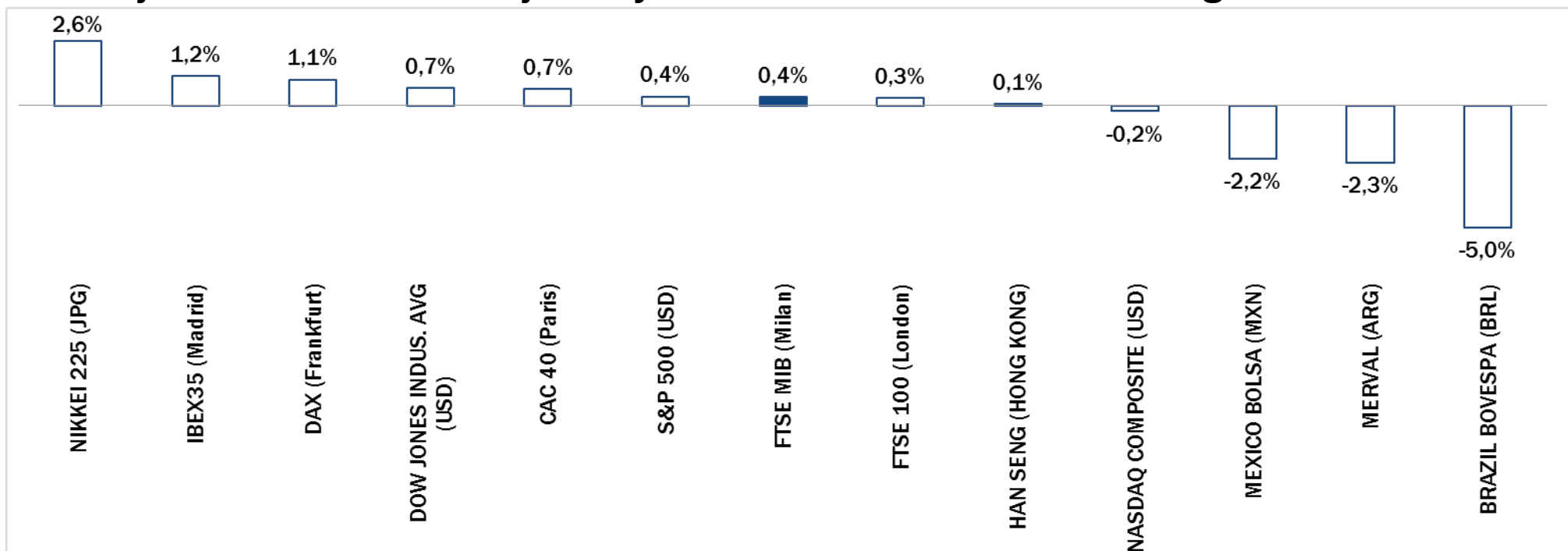


Weekly Stock Market Report for Telecom Italia Retail Shareholders

December 1st – December 5th, 2014

Weekly Performance Summary of Major Worldwide Market Stock Exchanges



Index Point as of 05-Dec-14	Performance ($\Delta\%$)*					Last 52 weeks		Daily average volume **		Market Cap. (mln. local cur.)
	1 week	1 month	6 months	1 year	from Jan. '14	Low Price	High Price	1 week	1 month	

Europe

FTSE MIB (Milan)	20.087	0,4%	5,2%	-9,9%	10,8%	5,9%	17.556	22.590	770.905.178	839.924.346	411.954
FTSE 100 (London)	6.743	0,3%	2,7%	-1,7%	2,9%	-0,1%	6.073	6.905	716.201.344	757.613.673	1.845.274
DAX (Frankfurt)	10.087	1,1%	8,6%	1,0%	10,0%	5,6%	8.355	10.093	96.095.768	94.762.118	994.474
CAC 40 (Paris)	4.419	0,7%	5,5%	-3,5%	7,0%	2,9%	3.789	4.599	110.914.118	126.458.466	1.194.984
IBEX35 (Madrid)	10.901	1,2%	7,6%	-1,5%	16,0%	9,9%	9.232	11.249	474.078.618	515.412.342	579.110

America

DOW JONES INDUS. AVG (USD)	17.959	0,7%	2,2%	6,1%	12,1%	8,3%	15.341	17.991	84.634.568	82.205.698	5.069.986
S&P 500 (USD)	2.075	0,4%	2,1%	6,5%	15,0%	12,3%	1.738	2.079	514.284.736	504.296.178	18.988.976
NASDAQ COMPOSITE (USD)	4.781	-0,2%	3,2%	10,6%	17,7%	14,5%	3.946	4.811	464.285.542	467.988.736	7.238.826
MEXICO BOLSA (MXN)	43.230	-2,2%	-3,1%	1,1%	3,1%	1,2%	37.752	46.554	213.178.486	193.001.116	2.125.054
Merval (ARG)	9.581	-2,3%	-9,5%	21,1%	79,7%	77,7%	5.105	12.599	5.286.950	6.571.172	9.579
BRAZIL BOVESPA (BRL)	51.993	-5,0%	-2,3%	-2,1%	2,1%	0,9%	44.905	62.305	317.227.738	401.304.121	1.703.938

Asia

NIKKEI 225 (JPG)	17.920	2,6%	6,2%	18,9%	17,1%	10,0%	13.885	17.922	1.361.945.062	1.640.783.561	333.139.968
HAN SENG (HONG KONG)	24.003	0,1%	1,9%	4,6%	1,1%	3,0%	21.138	25.363	3.558.232.371	2.123.133.547	14.692.181

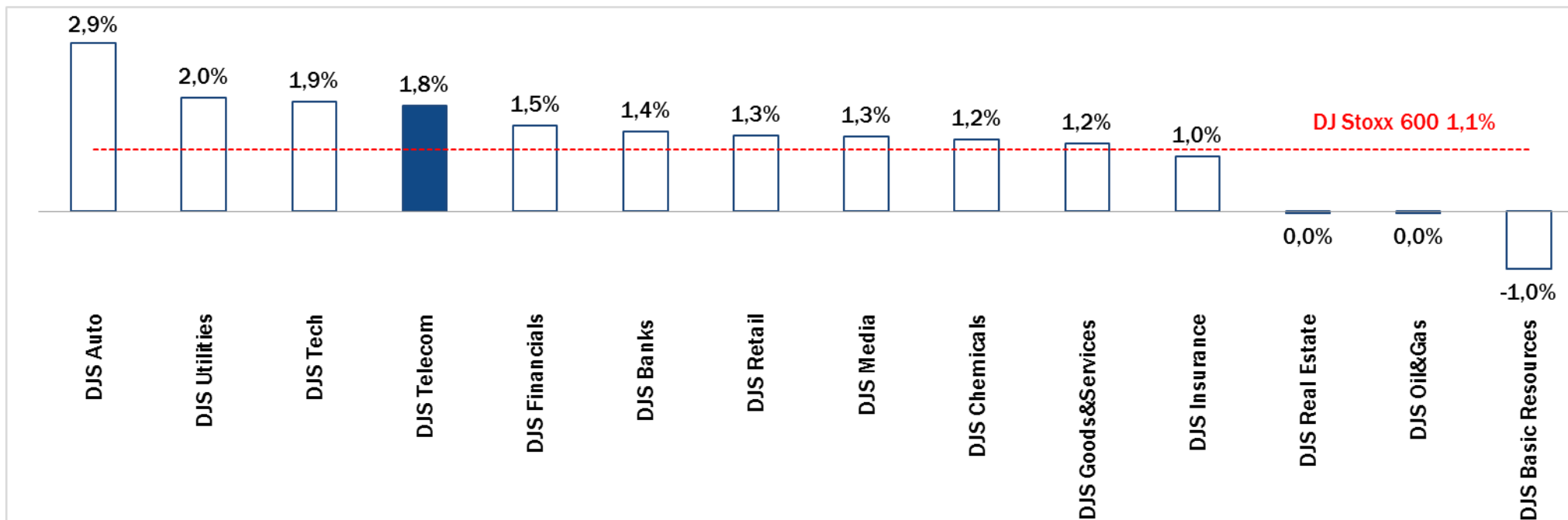
* performance calculated on closing price

** n. of traded shares

Source: Bloomberg LP

NB: Weekly performances are referred to last 5 open market sessions.

Weekly Performance Summary of Major European Sectors



Index	Index Point as of 05-Dec-14	Performance (Δ)*					Last 52 weeks		Daily average volume **		Market Cap. (mln. local cur.)
		1 week	1 month	6 months	1 year	from Jan. '14	Low Price	High Price	1 week	1 month	
Index											
DJ Stoxx 600	350,97	1,1%	4,7%	1,1%	10,9%	6,9%	302,48	351,04	3.021.005.056	3.226.857.830	8.963.039,00
Sectors											
DJ Telecom	335,15	1,8%	11,0%	8,8%	17,1%	12,6%	265,32	335,15	325.203.069	353.066.040	461.806,78
DJ Auto	516,18	2,9%	11,7%	-3,0%	11,2%	7,1%	407,83	536,66	39.466.762	40.641.357	291.782,28
DJ Banks	199,56	1,4%	5,8%	-3,5%	6,9%	2,8%	173,86	209,5	1.323.075.354	1.504.696.518	1.239.917,50
DJ Basic Resources	379,23	-1,0%	-4,0%	-7,5%	-2,7%	-5,4%	368,38	455,43	89.668.344	94.548.498	271.936,63
DJ Chemicals	806,4	1,2%	6,9%	2,1%	11,0%	6,5%	677,03	806,47	17.559.531	18.232.928	389.503,41
DJ Oil&Gas	294,55	0,0%	-7,3%	-19,4%	-9,4%	-12,1%	285,43	381,9	217.817.334	197.655.170	561.801,06
DJ Financials	378,55	1,5%	6,2%	4,0%	17,6%	10,2%	307,16	378,83	29.915.746	31.073.827	157.591,73
DJ Goods&Services	409,9	1,2%	3,5%	-3,1%	4,3%	-1,0%	351,98	425,9	155.078.088	162.488.627	913.571,56
DJ Insurance	252,79	1,0%	5,4%	7,9%	17,5%	10,8%	210,78	252,94	118.948.138	109.988.611	506.856,72
DJ Media	272,17	1,3%	7,1%	8,4%	13,2%	7,2%	226,72	272,87	51.122.286	54.166.505	246.247,27
DJ Tech	308,71	1,9%	7,9%	8,1%	9,3%	6,3%	260,2	308,85	71.704.437	84.393.219	279.678,25
DJ Utilities	329,71	2,0%	5,4%	3,1%	22,5%	18,5%	265,76	329,78	265.734.790	228.144.419	470.991,69
DJ Retail	308,12	1,3%	5,7%	-2,4%	-2,7%	-5,2%	259,46	331,27	89.912.374	117.301.811	317.133,34
DJ Real Estate	162,96	0,0%	4,6%	4,2%	21,5%	19,7%	129,71	165,11	19.093.677	19.057.012	128.046,22

* performance calculated on closing price

** n. of traded shares

Source: Bloomberg LP

NB: Weekly performances are referred to last 5 open market sessions.

Europe: Stock Performance of Main TLC Operators

Last Week Performance

OTE	5,6%
Telekom Austria	5,1%
Telecom Italia Ord.	5,0%
Telecom Italia Sav.	4,9%
Telenor	4,1%
Orange	3,9%
Telefonica	3,8%
TEF Deutschland	3,6%
TDC	3,1%
Elisa	2,9%
Inmarsat	2,8%
British Telecom	2,4%
DJStoxx Telecom	1,8%
C&W Comm.	1,6%
Belgacom	1,4%
Vivendi	1,2%
Freenet	1,1%
Deutsche Telekom	0,0%
Teliasonera	-0,1%
Swisscom	-0,3%
Tele2	-0,5%
KPN	-0,5%
Ziggo	-0,8%
Talk Talk	-1,0%
Vodafone Group	-1,4%
Iliad	-1,7%
Jazztel	-2,0%
Portugal Telecom	-8,1%

2014 Year-To-Date Performance

Orange	63,5%
Jazztel	61,3%
Belgacom	49,7%
Telecom Italia Sav.	35,8%
Tele2	31,9%
Telecom Italia Ord.	31,9%
Iliad	30,4%
Elisa	24,6%
Swisscom	24,2%
Vivendi	14,2%
Telekom Austria	13,7%
KPN	13,4%
Telefonica	13,0%
DJStoxx Telecom	12,6%
British Telecom	10,7%
Deutsche Telekom	10,3%
Freenet	10,2%
Inmarsat	8,0%
OTE	7,5%
Ziggo	7,5%
Telenor	6,6%
Talk Talk	1,1%
TEF Deutschland	-0,3%
Teliasonera	-0,7%
Vodafone Group	-4,3%
TDC	-4,9%
C&W Comm.	-10,6%
Portugal Telecom	-56,1%

Last 1 Year Performance

Jazztel	69,8%
Orange	64,4%
Belgacom	60,0%
Telecom Italia Sav.	47,8%
Telecom Italia Ord.	43,1%
Elisa	34,8%
Swisscom	28,8%
Tele2	26,1%
Vivendi	24,0%
Deutsche Telekom	18,8%
Inmarsat	18,2%
Freenet	17,7%
DJStoxx Telecom	17,1%
Ziggo	16,4%
Telefonica	16,1%
OTE	14,5%
KPN	14,2%
British Telecom	13,3%
Talk Talk	12,8%
Iliad	12,5%
Telenor	10,5%
Telekom Austria	7,2%
C&W Comm.	7,0%
Teliasonera	3,4%
TEF Deutschland	1,2%
TDC	0,6%
Vodafone Group	-1,8%
Portugal Telecom	-57,5%

Performance Summary of Main European TLC Operators

CI. Price (local currency) 05-Dec-14	Performance ($\Delta\%$)*						Last 52 weeks		Daily average volume **		Market Cap. (all in €mln)
	1 week	1 month	6 months	1 year	from Jan. '14	Low Price	High Price	1 week	1 month		
EUROPE											
Index											
DJStoxx Telecom	335,15	1,8%	11,0%	8,8%	17,1%	12,6%	265,32	335,15	325.203.069	353.066.040	
TLC Operators											
Telecom Italia Ord.	0,951	5,0%	8,3%	-3,5%	43,1%	31,9%	0,652	1,012	124.361.700	117.935.400	12.811
Telecom Italia Sav.	0,748	4,9%	7,2%	-2,0%	47,8%	35,8%	0,499	0,792	19.426.260	17.985.380	4.505
Altice	61,49	13,7%	20,8%	9,5%	n.a.	n.a.	25,505	61,640	196.792	234.452	15.232
Belgacom	32,20	1,4%	8,1%	31,7%	60,0%	49,7%	19,975	32,365	609.110	850.289	10.884
British Telecom	420,00	2,4%	13,1%	3,7%	13,3%	10,7%	350,300	421,200	20.425.450	20.001.710	43.371
C&W Comm.	50,30	1,6%	11,0%	-4,6%	7,0%	-10,6%	42,910	58,500	4.426.427	6.941.422	1.774
Deutsche Telekom	13,71	0,0%	13,9%	8,7%	18,8%	10,3%	10,065	13,750	12.311.920	13.596.120	62.160
Elisa	23,99	2,9%	8,3%	6,0%	34,8%	24,6%	17,580	23,990	343.492	394.364	4.014
Freenet	24,00	1,1%	10,8%	-0,1%	17,7%	10,2%	17,695	25,960	385.901	475.846	3.073
Orange	14,72	3,9%	17,1%	16,9%	64,4%	63,5%	8,388	14,725	8.259.842	9.017.038	38.978
OTE	10,40	5,6%	9,9%	-11,4%	14,5%	7,5%	8,460	13,200	844.325	801.972	5.098
Iliad	194,20	-1,7%	6,1%	-17,8%	12,5%	30,4%	144,850	247,400	76.200	97.941	11.347
Inmarsat	816,50	2,8%	16,8%	8,4%	18,2%	8,0%	653,000	818,000	1.858.761	1.332.196	4.642
Jazztel	12,55	-2,0%	-1,6%	16,2%	69,8%	61,3%	7,210	12,860	9.232.122	5.258.499	3.220
KPN	2,66	-0,5%	4,0%	-3,7%	14,2%	13,4%	2,133	2,805	12.543.650	16.431.410	11.342
TEF Deutschland	4,37	3,6%	11,7%	-5,5%	1,2%	-0,3%	3,466	5,052	1.969.362	2.218.044	12.999
Portugal Telecom	1,39	-8,1%	11,0%	-51,1%	-57,5%	-56,1%	0,865	3,639	9.077.858	12.630.470	1.243
Swisscom	585,00	-0,3%	3,8%	10,4%	28,8%	24,2%	447,600	587,500	108.842	114.805	25.203
Talk Talk	309,30	-1,0%	4,7%	-5,2%	12,8%	1,1%	261,000	334,300	1.876.740	2.242.884	3.748
TDC	50,00	3,1%	11,7%	-6,7%	0,6%	-4,9%	40,400	57,700	4.291.153	2.557.334	5.457
Telefonica	13,37	3,8%	11,4%	8,1%	16,1%	13,0%	10,760	13,385	28.217.370	49.554.800	60.847
Telenor	154,20	4,1%	2,5%	4,5%	10,5%	6,6%	123,900	158,200	2.198.188	2.073.928	26.405
Tele2	96,10	-0,5%	0,6%	21,2%	26,1%	31,9%	68,750	98,700	3.004.776	2.332.083	4.613
Telekom Austria	5,76	5,1%	7,0%	-12,0%	7,2%	13,7%	4,888	6,992	491.324	705.584	3.829
Teliasonera	53,15	-0,1%	4,1%	8,2%	3,4%	-0,7%	43,980	53,850	8.723.401	8.430.335	24.788
Vivendi	20,74	1,2%	5,0%	13,7%	24,0%	14,2%	16,446	20,785	4.069.729	4.611.297	27.962
Vodafone Group	230,60	-1,4%	11,2%	11,4%	-1,8%	-4,3%	179,100	252,300	78.523.650	89.101.270	77.524
Ziggo	35,71	-0,8%	-8,2%	4,3%	16,4%	7,5%	30,500	40,885	61.148	640.114	7.144

* performance calculated on closing price ** n. of traded shares

Source: Bloomberg LP

Brazil: Stock Performance of Main TLC Operators

Last Week Performance

Telecom Argentina - "B shares"	2,7%
Embratel PN	0,7%
NET Servicios PN	0,0%
Embratel ON	0,0%
Telecom Argentina - ADR	-0,2%
America Movil	-1,7%
Argentinean Equity - Merval Index	-2,3%
Brazilian Equity - Bovespa Index	-5,0%
TIM Participações	-5,7%
Telefonica Brasil ON	-6,2%
Telefonica Brasil PN	-7,0%
Oi PN	-11,6%
Oi ON	-13,2%

2014 Year-To-Date Performance

NET Servicios PN	92,6%
Embratel ON	79,3%
Argentinean Equity - Merval Index	77,7%
Embratel PN	76,9%
Telecom Argentina - "B shares"	69,0%
Telecom Argentina - ADR	27,0%
Telefonica Brasil PN	9,0%
America Movil	5,9%
Telefonica Brasil ON	1,3%
Brazilian Equity - Bovespa Index	0,9%
TIM Participações	-4,7%
Oi ON	-63,7%
Oi PN	-66,0%

Last 1 Year Performance

Embratel PN	104,0%
Embratel ON	103,2%
NET Servicios PN	91,3%
Argentinean Equity - Merval Index	79,7%
Telecom Argentina - "B shares"	64,5%
Telecom Argentina - ADR	19,4%
America Movil	11,9%
Telefonica Brasil PN	10,1%
Brazilian Equity - Bovespa Index	2,1%
TIM Participações	0,4%
Telefonica Brasil ON	-1,2%
Oi ON	-67,3%
Oi PN	-68,1%

Performance Summary of Main LatAm TLC Operators

Cl. Price 05-Dec-14	Performance ($\Delta\%$)*						Last 52 weeks		Daily average volume **		Market Cap. (mln)***
	1 week	1 month	6 months	1 year	from Jan. '14	Low Price	High Price	1 week	1 month		

BRAZIL

Index

Brazilian Equity - Bovespa Index	R\$ 51.992,89	-5,0%	-2,3%	-2,1%	2,1%	0,9%	44.904,83	62.304,88	317.227.738	401.304.121	R\$ 1.703.938
----------------------------------	---------------	-------	-------	-------	------	------	-----------	-----------	-------------	-------------	---------------

Peers

TIM Participações	R\$ 11,75	-5,7%	-10,4%	-11,0%	0,4%	-4,7%	R\$ 10,19	R\$ 14,57	2.603.180	3.667.873	R\$ 28.447
-------------------	-----------	-------	--------	--------	------	-------	-----------	-----------	-----------	-----------	------------

Oi ON	R\$ 1,31	-13,2%	0,8%	-41,0%	-67,3%	-63,7%	R\$ 1,08	R\$ 4,89	2.177.540	3.780.253	R\$ 3.749
Oi PN	R\$ 1,22	-11,6%	1,7%	-42,5%	-68,1%	-66,0%	R\$ 1,02	R\$ 4,62	25.249.500	36.892.050	R\$ 6.982
Telefonica Brasil ON	R\$ 40,50	-6,2%	-0,6%	3,6%	-1,2%	1,3%	R\$ 36,49	R\$ 44,66	9.620	11.653	R\$ 15.454
Telefonica Brasil PN	R\$ 48,85	-7,0%	0,7%	8,2%	10,1%	9,0%	R\$ 41,66	R\$ 54,00	823.560	869.587	R\$ 36.345
Embratel ON	R\$ 15,04	0,0%	-16,4%	-3,0%	103,2%	79,3%	R\$ 6,90	R\$ 23,88	0	490	R\$ 9.599
Embratel PN	R\$ 15,30	0,7%	-19,5%	-10,0%	104,0%	76,9%	R\$ 7,00	R\$ 23,50	80	587	R\$ 9.075
NET Servicos PN	R\$ 43,00	0,0%	-10,4%	-25,0%	91,3%	92,6%	R\$ 18,98	R\$ 63,85	0	213	R\$ 10.736

ARGENTINA

Index

Argentinean Equity - Merval Index	9.580,55	-2,3%	-9,5%	21,1%	79,7%	77,7%	5.105,48	12.599,42	0	213	ARS 937.751
-----------------------------------	----------	-------	-------	-------	-------	-------	----------	-----------	---	-----	-------------

Integrated

Telecom Argentina - "B shares"	ARS 52,40	2,7%	-7,3%	9,2%	64,5%	69,0%	ARS 27,40	ARS 65,00	23.673	64.847	ARS 51.582
Telecom Argentina - ADR	\$21,89	-0,2%	0,5%	-3,9%	19,4%	27,0%	\$13,93	\$25,56	92.301	112.431	\$4.310

Nortel Inversora B shares - ADR	\$22,07	-2,7%	-5,2%	-11,6%	-2,9%	10,9%	\$15,84	\$26,37	835	2.915	\$3.002
---------------------------------	---------	-------	-------	--------	-------	-------	---------	---------	-----	-------	---------

MEXICO

Index

Mexican Equity - Mexbol Index	43.230,34	-2,2%	-3,1%	1,1%	3,1%	1,2%	37.751,64	46.554,28	213.178.486	193.001.116	MXN 4.780.823
-------------------------------	-----------	-------	-------	------	------	------	-----------	-----------	-------------	-------------	---------------

Mobile/Integrated

America Movil	MXN 16,12	-1,7%	-1,8%	22,5%	11,9%	5,9%	MXN 12,39	MXN 17,64	62.908.310	68.393.300	MXN 1.101.548
---------------	-----------	-------	-------	-------	-------	------	-----------	-----------	------------	------------	---------------

TV

Grupo Televisa	MXN 104,73	3,4%	9,7%	17,6%	41,7%	33,1%	MXN 73,21	MXN 105,16	4.063.422	2.986.805	MXN 302.890
----------------	------------	------	------	-------	-------	-------	-----------	------------	-----------	-----------	-------------

* performance calculated on closing price

** n. of traded shares

*** For Telecom Argentina, reported market capitalization represents estimated market capitalization of all Classes of Shares (A,B,C - of which only Class B is listed).



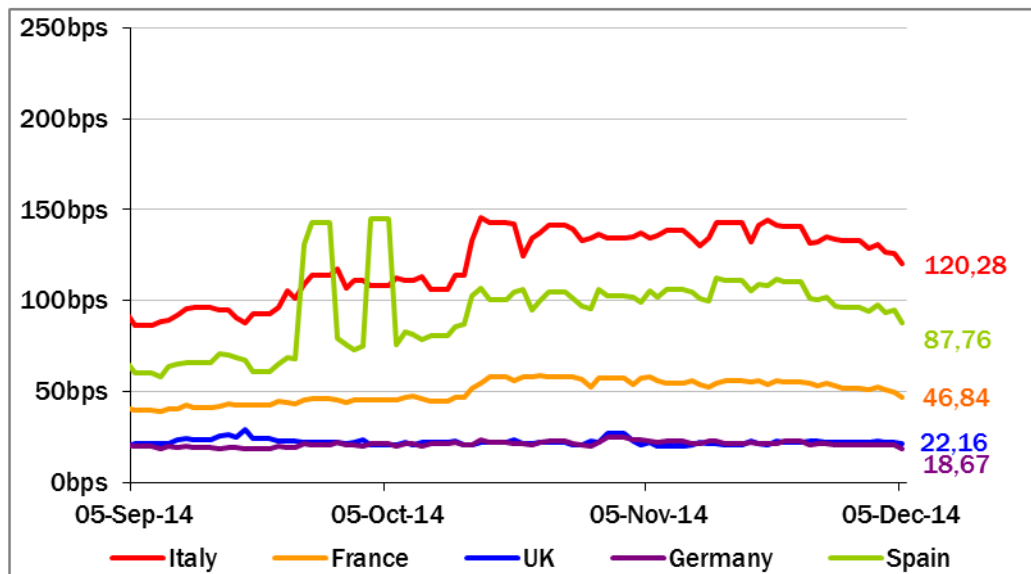
European Telecoms Sector: Credit Outlook

Long-term Credit Ratings

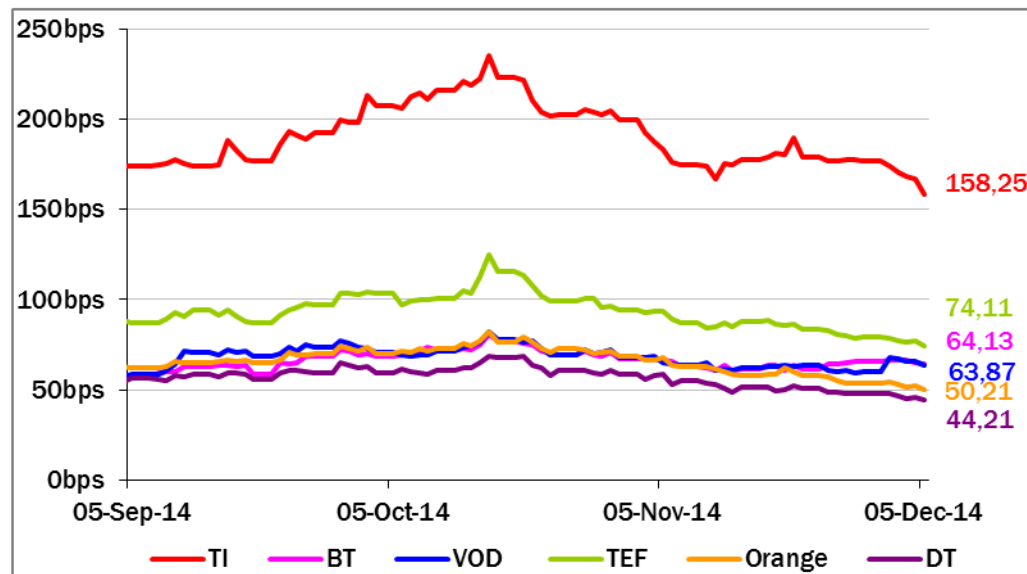
	Moody's		S&P		Fitch	
	rating	outlook	rating	outlook	rating	outlook
TELECOM ITALIA	Ba1	NEG	BB+	STABLE	BBB-	NEG
BELGACOM	A1	STABLE	A	STABLE	n.a.	n.a.
BT GROUP	Baa2	POS	BBB	STABLE	BBB	POS
DEUTSCHE TELEKOM	Baa1	STABLE	BBB+	STABLE	BBB+	STABLE
ORANGE	Baa1	STABLE	BBB+	NEG	BBB+	NEG
KPN	Baa3	STABLE	BBB-	STABLE	BBB-	STABLE
OI GROUP	Ba1	NEG	BB+	STABLE	BB+	STABLE
SWISSCOM	A2	STABLE	A	STABLE	n.a.	n.a.
TELEFONICA	Baa2	NEG	BBB	STABLE	BBB+	NEG
TELEKOM AUSTRIA	Baa2	STABLE	BBB	STABLE	n.a.	n.a.
TELIASONERA	A3	NEG	A-	STABLE	A-	STABLE
TELENOR	A3	STABLE	A	STABLE	n.a.	n.a.
VODAFONE GROUP	Baa1	STABLE	A-	NEG	BBB+	STABLE
WIND TELECOMUNICAZIONI	B2	STABLE	BB-	STABLE	B+	STABLE
VIMPELCOM	Ba3	STABLE	BB	POS	n.a.	n.a.

5 Years CDS levels

Countries



TLC Operators

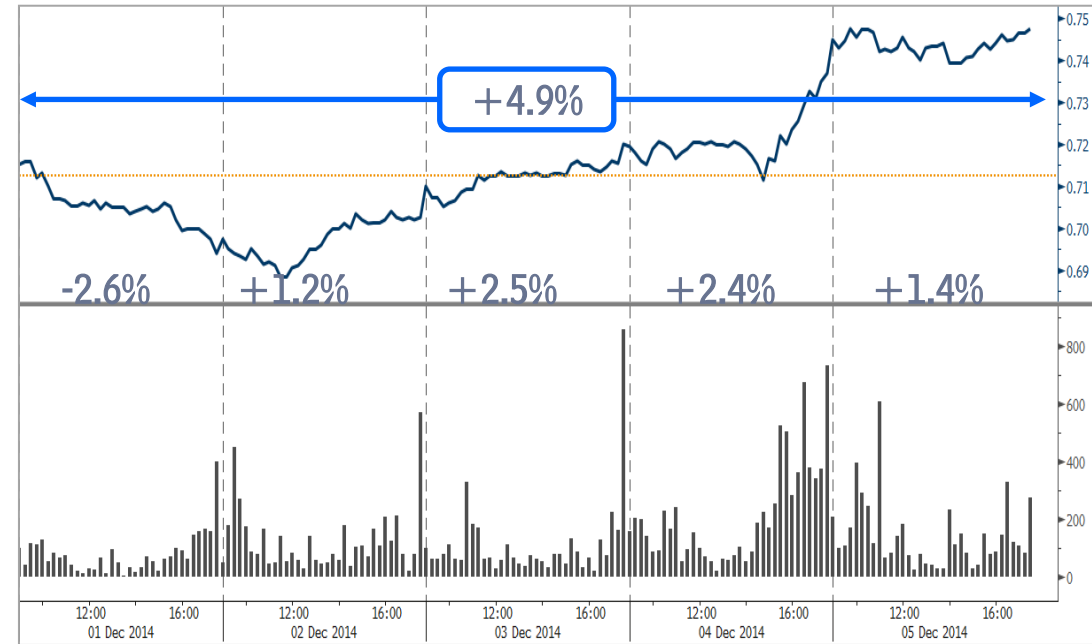




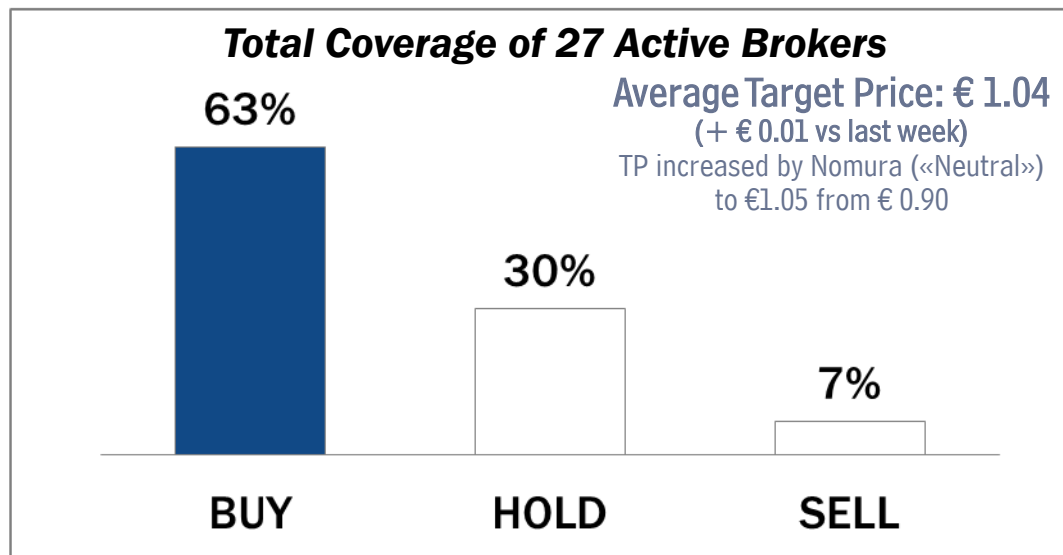
Telecom Italia Group – Weekly Performance: Price (€) and Volumes (mln)

TI Ordinary Shares

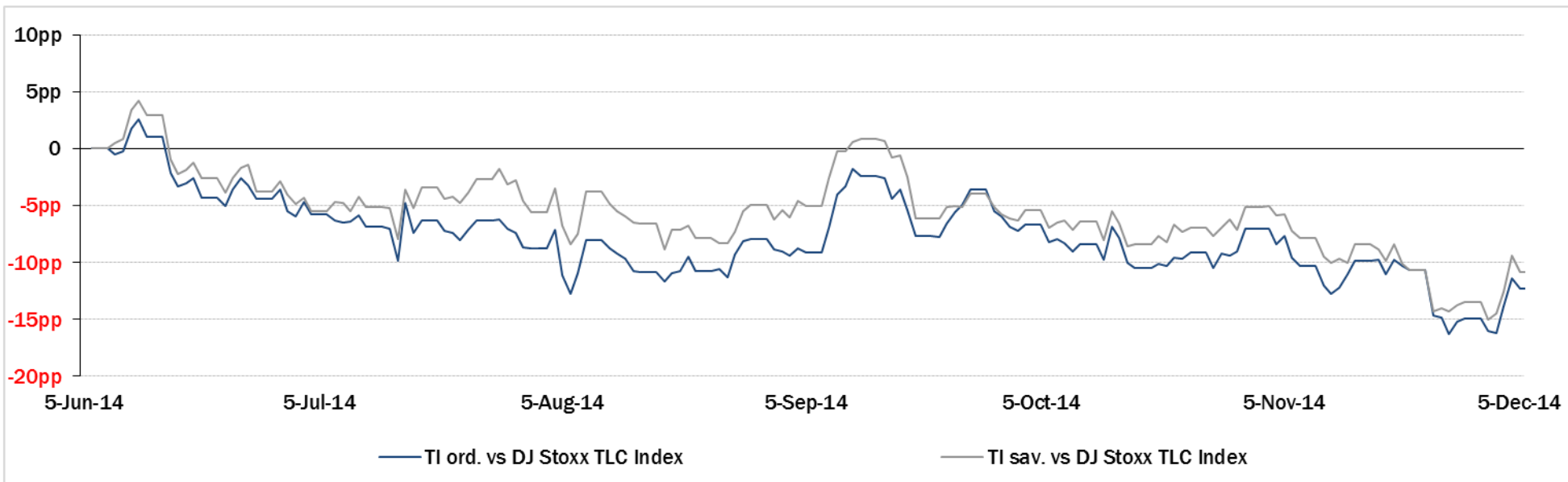
TI Saving Shares



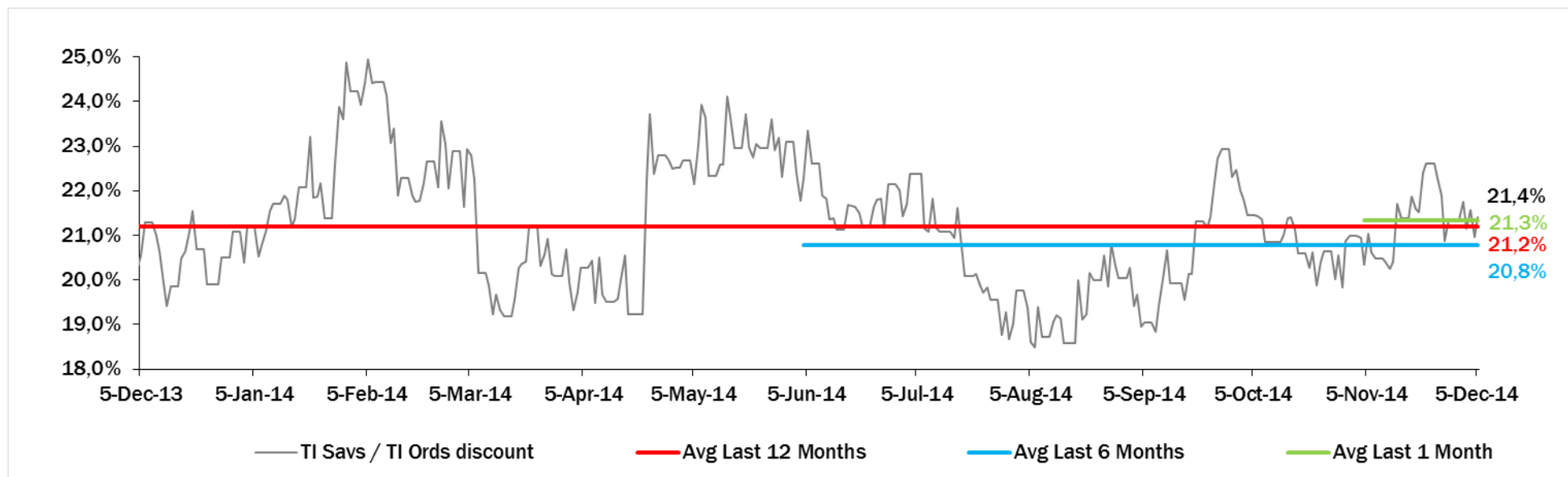
Analysts' Recommendations on TI Ords



Relative Performance Last 6 Months of Telecom Italia Shares vs TLC Sector



Evolution of the spread between Telecom Italia shares (TI Savs / TI Ords) in the last 12 months



Performance Summary of FTSE MIB



Cl. Price € 05-Dec-14	Performance (Δ%)*					Last 52 weeks		Daily average volume		Market** Cap. mil. Euro	
	1 week	1 month	6 months	1 year	from Jan. '14	Low Price	High Price	1 week	1 month		
Index											
FTSE MIB (Milan)	20.087	0,4%	5,2%	-9,9%	10,8%	5,9%	17.556	22.590	770.905.178	839.924.346	411.954
FTSE Italia All-Share (Milan)	21.199	0,4%	5,1%	-10,5%	9,6%	4,9%	18.587	23.913	1.015.298.240	1.107.453.636	494.339
Stocks FTSE MIB											
A2A SPA	0,87	3,3%	9,8%	-3,8%	11,5%	1,8%	0,68	1,03	20.643.920	18.168.010	2.713
AUTOGRILL SPA	6,24	2,9%	23,9%	-9,4%	5,9%	1,6%	4,87	7,77	2.271.243	2.659.195	1.587
ATLANTIA SPA	19,89	-1,9%	7,1%	-4,7%	25,3%	21,9%	15,57	21,50	2.386.849	2.354.521	16.425
AZIMUT HOLDING SPA	18,22	-1,5%	-3,6%	-14,8%	0,5%	-5,2%	16,02	25,92	1.300.282	1.220.539	2.610
BANCA MONTE DEI PASCHI SIENA	0,61	-6,7%	-9,1%	-60,7%	-40,6%	-44,8%	0,58	2,73	51.629.660	113.453.600	3.098
BANCO POPOLARE SC	11,21	1,1%	1,4%	-24,3%	9,0%	6,2%	8,90	16,41	5.291.304	6.059.012	4.060
BANCA POPOL EMILIA ROMAGNA	5,87	3,0%	2,4%	-26,7%	-2,8%	-6,9%	4,90	8,87	5.059.757	6.038.946	2.825
BUZZI UNICEM SPA	11,85	-1,5%	9,1%	-10,6%	-1,2%	-9,6%	9,45	15,20	1.385.416	1.297.895	2.243
CNH INDUSTRIAL NV	6,43	2,1%	0,6%	-19,6%	-16,8%	-22,4%	5,83	8,87	5.715.176	5.722.449	8.707
DAVIDE CAMPARI-MILANO SPA	5,65	0,4%	1,0%	-9,0%	-3,3%	-7,2%	5,04	6,44	1.060.165	1.353.995	3.279
ENEL GREEN POWER SPA	1,86	-4,0%	-1,1%	-13,0%	9,6%	1,5%	1,65	2,19	15.045.350	11.003.570	9.290
ENEL SPA	3,96	2,0%	0,7%	-7,3%	27,3%	24,7%	2,98	4,49	44.609.380	48.216.090	37.218
ENI SPA	15,50	-3,5%	-6,0%	-18,5%	-8,9%	-11,4%	15,31	20,46	24.264.100	19.114.940	56.330
EXOR SPA	36,28	1,3%	10,4%	14,3%	32,2%	25,5%	26,62	36,40	706.441	704.398	8.933
FIAT CHRYSLER AUTOMOBILES NV	11,17	11,4%	26,3%	n.a.	n.a.	n.a.	6,57	11,19	17.712.340	18.666.020	13.504
FINMECCANICA SPA	8,10	3,8%	8,3%	23,9%	62,3%	47,0%	4,85	8,10	4.390.940	5.196.128	4.680
ASSICURAZIONI GENERALI	17,38	-0,1%	6,2%	3,6%	6,6%	1,6%	14,40	17,70	6.878.426	7.612.148	27.058
GTECH SPA	18,16	-1,5%	1,2%	-8,7%	-15,3%	-18,1%	15,24	24,13	342.545	454.926	3.178
INTESA SANPAOLO	2,52	1,8%	12,4%	-3,4%	49,1%	40,6%	1,63	2,66	199.162.900	184.990.300	42.038
LUXOTTICA GROUP SPA	44,60	3,7%	10,4%	6,7%	21,9%	14,5%	34,74	44,62	1.029.392	863.342	21.474
MEDIOBANCA SPA	7,38	2,5%	7,2%	-7,9%	21,8%	16,0%	5,74	8,49	5.745.912	5.863.411	6.358
MEDIOLANUM SPA	5,49	-1,7%	2,4%	-14,4%	-13,7%	-12,9%	4,75	7,19	2.463.910	2.587.878	4.045
MONCLER SPA	10,99	-8,0%	6,8%	-15,7%	n.a.	-30,4%	10,01	16,60	854.724	938.097	2.748
MEDIASET SPA	3,30	1,4%	25,0%	-9,2%	6,5%	-4,3%	2,42	4,45	7.643.346	10.240.760	3.896
PIRELLI & C.	11,60	1,7%	8,9%	-7,5%	3,8%	-7,8%	9,61	12,99	2.890.513	2.565.957	5.646
BANCA POPOLARE DI MILANO	0,60	1,7%	6,0%	-17,7%	59,8%	49,0%	0,36	0,74	67.369.870	88.580.460	2.626
PRYSMIAN SPA	15,07	4,3%	6,7%	-10,9%	-17,5%	-19,5%	12,34	19,79	1.375.940	1.452.773	3.262
SALVATORE FERRAGAMO SPA	20,87	-4,7%	14,7%	-2,2%	-25,4%	-24,5%	17,61	28,87	800.748	718.804	3.515
SAIPEM SPA	9,32	-19,1%	-23,1%	-53,0%	-41,2%	-40,1%	9,24	21,00	16.116.850	7.436.886	4.113
SNAM SPA	4,24	-0,6%	6,4%	-3,3%	12,2%	4,3%	3,71	4,58	9.801.150	14.564.600	14.338
STMICROELECTRONICS NV	6,29	4,0%	12,8%	-11,4%	13,9%	8,8%	4,89	7,42	4.184.591	6.062.953	5.724
TENARIS SA	12,88	-3,2%	-12,9%	-24,0%	-19,7%	-18,9%	12,77	18,29	3.526.355	3.192.716	15.205
TELECOM ITALIA SPA	0,9510	5,0%	8,3%	-3,5%	43,1%	31,9%	0,65	1,01	124.361.700	117.935.400	17.315
TOD'S SPA	69,15	-6,9%	-1,6%	-28,9%	-42,7%	-43,0%	64,20	123,50	185.387	189.250	2.117
TERNA SPA	3,93	1,3%	4,1%	-1,8%	13,6%	8,3%	3,42	4,14	9.029.958	11.085.740	7.907
UBI BANCA SCPA	6,35	2,8%	9,1%	-11,6%	35,4%	28,6%	4,58	7,55	8.607.123	10.741.130	5.726
UNICREDIT SPA	5,91	-0,6%	3,9%	-12,8%	14,9%	9,9%	5,01	6,89	83.091.190	88.975.850	34.672
UNIPOLSAI SPA	2,30	-0,1%	12,5%	-9,7%	22,9%	3,7%	1,83	2,72	8.859.827	8.085.125	6.352
WORLD DUTY FREE SPA	7,81	0,3%	15,8%	-23,1%	-6,2%	-14,6%	6,05	11,07	1.747.604	2.153.129	1.988
YOOX SPA	18,85	-2,1%	27,7%	-14,0%	-38,5%	-42,2%	13,87	35,09	1.362.887	1.403.437	1.163

** for FTSE MIB stocks, market cap here reported on overall shares outstanding

Source: Bloomberg LP